



**QUEEN'S  
UNIVERSITY  
BELFAST**

## **Association of TGFB1 rs1800469 and BCMO1 rs6564851 with coronary heart disease and IL1B rs16944 with all-cause mortality in men from the Northern Ireland PRIME study**

Mooney, R. E., Linden, G. J., Winning, L., Linden, K., Kee, F., McKeown, P. P., Woodside, J. V., Patterson, C. C., & McKay, G. J. (2022). Association of TGFB1 rs1800469 and BCMO1 rs6564851 with coronary heart disease and IL1B rs16944 with all-cause mortality in men from the Northern Ireland PRIME study. *PLOS ONE*, 17(8), Article e0273333. <https://doi.org/10.1371/journal.pone.0273333>

**Published in:**  
PLOS ONE

**Document Version:**  
Publisher's PDF, also known as Version of record

**Queen's University Belfast - Research Portal:**  
[Link to publication record in Queen's University Belfast Research Portal](#)

### **Publisher rights**

Copyright 2022 the authors.  
This is an open access article published under a Creative Commons Attribution License (<https://creativecommons.org/licenses/by/4.0/>), which permits unrestricted use, distribution and reproduction in any medium, provided the author and source are cited.

### **General rights**

Copyright for the publications made accessible via the Queen's University Belfast Research Portal is retained by the author(s) and / or other copyright owners and it is a condition of accessing these publications that users recognise and abide by the legal requirements associated with these rights.

### **Take down policy**

The Research Portal is Queen's institutional repository that provides access to Queen's research output. Every effort has been made to ensure that content in the Research Portal does not infringe any person's rights, or applicable UK laws. If you discover content in the Research Portal that you believe breaches copyright or violates any law, please contact [openaccess@qub.ac.uk](mailto:openaccess@qub.ac.uk).

### **Open Access**

This research has been made openly available by Queen's academics and its Open Research team. We would love to hear how access to this research benefits you. – Share your feedback with us: <http://go.qub.ac.uk/oa-feedback>

## RESEARCH ARTICLE

# Association of *TGFB1* rs1800469 and *BCMO1* rs6564851 with coronary heart disease and *IL1B* rs16944 with all-cause mortality in men from the Northern Ireland PRIME study

Rachel E. Mooney<sup>1</sup>, Gerry J. Linden<sup>1</sup>, Lewis Winning<sup>2</sup>, Katie Linden<sup>1</sup>, Frank Kee<sup>1</sup>, Pascal P. McKeown<sup>1</sup>, Jayne V. Woodside<sup>1</sup>, Christopher C. Patterson<sup>1</sup>, Gareth J. McKay<sup>1\*</sup>

**1** Centre for Public Health, Queen's University Belfast, Belfast, United Kingdom, **2** Dublin Dental University Hospital, Trinity College Dublin, Dublin, Ireland

\* [g.j.mckay@qub.ac.uk](mailto:g.j.mckay@qub.ac.uk)



## OPEN ACCESS

**Citation:** Mooney RE, Linden GJ, Winning L, Linden K, Kee F, McKeown PP, et al. (2022) Association of *TGFB1* rs1800469 and *BCMO1* rs6564851 with coronary heart disease and *IL1B* rs16944 with all-cause mortality in men from the Northern Ireland PRIME study. PLoS ONE 17(8): e0273333. <https://doi.org/10.1371/journal.pone.0273333>

**Editor:** Gualtiero I. Colombo, Centro Cardiologico Monzino, ITALY

**Received:** October 6, 2021

**Accepted:** August 7, 2022

**Published:** August 22, 2022

**Copyright:** © 2022 Mooney et al. This is an open access article distributed under the terms of the [Creative Commons Attribution License](https://creativecommons.org/licenses/by/4.0/), which permits unrestricted use, distribution, and reproduction in any medium, provided the original author and source are credited.

**Data Availability Statement:** All relevant data are within the manuscript and its [Supporting Information](#) files.

**Funding:** The Belfast PRIME rescreening study was supported by grants from the British Heart Foundation (PG/14/9/30632), the Northern Ireland NHS Research and Development Fund (RRG 5.22) and the Heart Trust Fund (Royal Victoria Hospital Belfast). The funders had no role in study design,

## Abstract

### Background

Historically, high levels of morbidity and mortality have been associated with cardiovascular disease in the Northern Ireland population. Previously reported associations between single nucleotide polymorphisms (SNPs) and cardiovascular disease within other populations have not always been consistent.

### Objective

To investigate associations between 33 SNPs with fatal or non-fatal incident coronary heart disease (CHD) events and all-cause mortality in the Northern Irish participants of the Prospective Epidemiological Study of Myocardial Infarction (PRIME).

### Method

Phase 2 of the PRIME study prospectively evaluated 2,010 men aged 58–74 years in Northern Ireland for more than 10 years for incident CHD events (myocardial infarction, percutaneous coronary intervention, coronary artery bypass, and cardiac death) and more than 15 years for all-cause mortality. SNPs previously reported in association with cardiovascular outcomes were evaluated against incident CHD events and all-cause mortality using Cox's proportional hazards models adjusted for established cardiovascular disease risk factors.

### Results

During the follow-up period, 177 incident CHD events were recorded, and 821 men died. Both *BCMO1* rs6564851 (Hazard ratio [HR] = 0.76; 95% confidence intervals [CI]: 0.60–0.96; P = 0.02) and *TGFB1* rs1800469 (HR = 1.30; CI: 1.02–1.65; P = 0.04) were significantly associated with incident CHD events in adjusted models. Only *IL1B* rs16944 was significantly associated with all-cause mortality (HR = 1.18; CI: 1.05–1.33; P = 0.005). No associations remained significant following Bonferroni correction for multiple testing.

data collection and analysis, decision to publish, or preparation of the manuscript.

**Competing interests:** The authors have declared that no competing interests exist.

## Conclusion

We report a novel association between *BCMO1* rs6564851 and risk of incident CHD events. In addition, *TGFB1* rs1800469 and *IL1B* rs16944 were associated with the risk of incident CHD events and all-cause mortality outcomes respectively, supporting previously reported associations.

## Introduction

Cardiovascular disease (CVD) is the leading cause of global mortality according to the World Health Organisation, accounting for approximately 17.9 million deaths in 2016 [1]. In 2017, 94% of CHD deaths in NI were attributed to modifiable risk factors [2], including diet [3], obesity [4] and smoking [5]. Non-modifiable risk factors including age [6], male sex [7], ethnicity [8, 9] and socioeconomic status [10] have also been reported to influence CHD risk. Given the multifactorial nature of the risk associated with CHD, the genetic influences of single nucleotide polymorphisms (SNP) as risk factors for CHD is less clear. With rapid whole genome sequencing now possible through technological advances [11], genetic testing offers potential for diagnosis, patient risk stratification and management decisions [12]. Polygenic risk scoring may prove beneficial, with almost 8% of the population reported to have a 3-fold increased CHD polygenic risk [13]. Genetic testing is currently recommended for some cardiac conditions, such as long QT syndrome and hypertrophic cardiomyopathy but the potential application of genetic testing across CVD in general, remains largely unexplored [14].

The Prospective Epidemiological Study of Myocardial Infarction (PRIME) was established to prospectively study risk factors of CHD in Northern Irish and French men [15]. Among the Northern Irish PRIME participants, 33 SNPs from 23 genes were genotyped, selected on the basis of previously reported associations with CHD or CHD risk factors. These SNPs were based on multi-functional gene sets, including 10 SNPs from eight genes encoding interleukins or interleukin receptors. Interleukins play an important role in inflammation [16], a known risk factor for CHD [17], with several previously reported in association with CHD—*IL6* rs1800795 [18], *IL6R* rs2228145 [19], *IL10* rs1800872 [20] and *IL17A* rs2275913 [21].

Furthermore, additional candidate SNPs from other genes with previous evidence of association with CHD or CHD risk factors were also evaluated. These included SNPs from vitamin D receptor (VDR) [22], RANK ligand [23], transforming growth factor beta [24], toll-like receptor 4 [25], cytochrome c oxidase subunit II [26], S100 calcium binding protein A8 [27], N-acetyltransferase 2 [28], beta-carotene 15,15'-monooxygenase 1 [29], solute carrier family 23 member 1 [30], CD36 molecule [31], glycosyltransferase 6 domain containing 1 [32], and fibronectin [33]. Several of these candidate SNPs were chosen given contrasting previously reported associations with CVD, including *ALR15* rs4311394 [34], *CDKN2B-AS1* rs1333049 [35] and *TNFRSF11B* rs2073618 [36].

We hypothesized that genetic variation in these candidate SNPs may be associated with incident CHD events and all-cause mortality in NI men from the PRIME study. Associations between SNPs and incident CHD events and all-cause mortality were evaluated over a 14–20 year follow-up period beginning at rescreen in 2001–2003 and ending in April 2015 for CHD events and in November 2020 for all-cause mortality.

## Methods and materials

### PRIME study participants

The PRIME study is a prospective cohort study to determine risk factors associated with incident CHD in men from NI and France [15]. Details on recruitment and examination in the

PRIME study are published elsewhere [15]. In brief, there were a total of 2,745 men, aged between 50 and 60 years, initially recruited in NI between 1991 and 1994. Sampling was aimed at appropriate representation of the local population's socioeconomic status and participation was voluntary [37]. The surviving men in the NI PRIME study were invited to attend for rescreening between 2001 and 2003. Rescreening assessment included questionnaires on socio-economic status, occupation, physical activity, tobacco/alcohol consumption and education. Weight, height, blood pressure and ECG were measured, and a blood sample for lipid and clotting profile, antioxidants, and DNA taken [15]. Approval was obtained from the Research Ethics Committee of the Faculty of Medicine, Queen's University Belfast, and the Office for Research Ethics Committees Northern Ireland (reference number 06/NIR02/107). All men provided informed, written consent prior to participation.

### Follow-up

The study commenced on the day each of the 2,010 men attended for rescreen examination (2001–2003). The men were followed up by postal questionnaires circulated in 2007, 2011 and 2015 and asked to complete a clinical event questionnaire. Self-reported information on any potential CHD events, provided as responses to the postal questionnaires or phone contacts, was subject to extensive validation using information from hospital and medical records. Reports on any imaging performed were retrieved. Diagnostic data for all CHD events included ECGs, biomarkers, surgical interventions, revascularisation procedures and any other treatment or special investigations. The end of follow up for incident CHD events was April 1<sup>st</sup>, 2015. Incident CHD events included myocardial infarction, defined by one of the following sets of conditions: (a) new diagnostic Q-wave or other fresh typical electrocardiographic signs of necrosis; (b) typical or atypical pain symptoms and new (or increased) ischaemia and myocardial marker levels higher than twice the upper limit and (c) post-mortem evidence of fresh myocardial infarction or thrombosis. Incident CHD events also included coronary artery bypass grafting or percutaneous coronary intervention [38]. Previous evidence of a CVD event did not preclude participation but men with evidence of prevalent CVD at rescreening were excluded from the incident CHD study. Accurate information on a history of CHD was available from the main study database as this was the primary outcome under investigation in the PRIME study, with men having already been under observation for 10 years prior to re-screening. All the relevant information for each fatal or non-fatal coronary event was examined by a validation committee that included clinical consultants who specialised in coronary disease and were independent of the researchers in the study.

Information on deaths was obtained from the Business Services Organization (BSO), which is an agency of the Department of Health in Northern Ireland. The BSO uses death registration information supplied by the NI Register General Office and other sources to link data on all deaths in NI to the master patient index. The BSO provides six monthly updates on the deaths of participants in the cohort who are flagged on their system [39]. The end of follow-up date for mortality was November 30<sup>th</sup>, 2020.

### Genotyping

DNA was extracted using the salting-out method from peripheral leucocytes [25]. Genotyping was carried out at the genomic core facility at Queen's University Belfast using a commercially available Sequenom MassARRAY iPLEX platform (Sequenom Inc., San Diego, Ca). The majority of the genetic information was obtained from blood samples taken at rescreen. If a blood sample was unavailable from rescreen, residual blood from baseline samples was used for genotyping in a small number of cases [39].

## Potential predictors of CHD

Smoking status was characterised as ‘current smoker’, ‘former smoker’ or ‘never smoked’, from questionnaire responses provided at rescreen. A history of diabetes or pre-diabetes was by self-report. Body mass index (BMI) was calculated using rescreen height and weight, and blood pressure was measured. Measurements of plasma cholesterol, HDL-cholesterol and triglycerides were determined from blood samples collected at rescreen. Some baseline information was used including alcohol intake divided into five categories—0, 1–128, 129–265, 266–441 and > 441 ml/week. Socio-economic status was summarized as low, medium, or high, by summary variables based on vehicle ownership, number of toilets in household and home ownership status [40]. Physical activity was characterized as metabolic equivalent tasks (METs) per week [41].

## Statistical methods

Potential predictor variables were summarized on the basis of CHD events and all-cause mortality for the cohort of men who attended rescreen. Physical activity was skewed and, therefore, square root transformed before analysis. Continuous variables were compared by independent sample z test and categorical variables by chi-square test. SNP minor allele frequency (MAF) was recorded as 0, 1 or 2.

For CHD analysis, the study period ranged from date of rescreen to 1<sup>st</sup> April 2015, as this was the latest date the medical committee had reviewed CHD outcomes. Men with prevalent CHD at rescreen were excluded from analysis of CHD outcomes only. For all-cause mortality, the study period was from rescreen date until 30<sup>th</sup> November 2020. Cox’s proportional hazards analysis was used to estimate hazard ratios for CHD events and all-cause mortality in separate analyses, based on MAF. MAF was included as a continuous variable—giving a hazard ratio for CHD or all-cause mortality per additional minor allele. Time to CHD event was from rescreen to date of first recorded CHD event and for all-cause mortality from rescreen to date of death.

Initially an unadjusted model was evaluated, containing only MAF. An adjusted model included the additional recognised risk factors age, BMI (kg/m<sup>2</sup>), height (cm), systolic blood pressure measurement (mm/Hg), plasma cholesterol, HDL-cholesterol and triglyceride levels (mmol/L), physical activity (METs/week), alcohol consumption (none, 1–128, 129–265, 266–441 and > 441 mL/week), smoking status (current smoker, former smoker, never smoked), history of diabetes or prediabetes (yes, no) and socio-economic status (low, medium or high).

In addition, hazard ratios for all-cause mortality were calculated using Cox Proportional hazard analysis with MAF as a categorical variable (1 minor allele vs 0 minor allele and 2 minor alleles vs 0 minor allele comparisons). Kaplan-Meier survival curves were used to plot the cumulative incidence of all-cause mortality by the number of minor alleles for those that were significantly associated with all-cause mortality in this analysis.

The validity of the proportional hazards assumption in the Cox models was assessed by adding a time-dependent covariate (representing the interaction between genotype and time) to each model.

Statistical analysis was performed using IBM SPSS for Windows version 26 (IBM Corp, Armonk, NY), with a significance threshold  $p < 0.05$ .

## Results

### Coronary heart disease events

Of the 2,745 original PRIME participants from Northern Ireland, 2,010 attended for rescreen; 324 had CVD at entry and hence were excluded from the time to CHD event analysis. Of the

remaining 1,686 men free from CVD at rescreen, 177 (10.5%) had an incident CHD event during the follow-up period to 1<sup>st</sup> April 2015. Therefore, there were 1,509 controls. Potential predictor variables for CHD are summarised in [Table 1](#). There was a significant difference ( $p < 0.05$ ) between groups for mean height, with those who experienced a CHD event tending to be shorter (171.7 cm versus 173.0 cm), and more likely to smoke (26.6% versus 18.2%). There was no significant difference in other recognised risk factors between those who experienced a CHD event and those that did not.

### All-cause mortality

All 2,010 men who attended rescreen were included in the all-cause mortality analysis. Of these, 821 (40.8%) died in the follow-up period until 30<sup>th</sup> November 2020. Therefore, there were 1,189 controls. Potential predictor variables for all-cause mortality for the 2,010 men who attended rescreen are summarised in [Table 1](#). There were significant differences ( $p < 0.05$ ) between those alive and dead in terms of mean age (years)—those who died were older (65.7 years versus 64.1 years), had lower mean total cholesterol (5.28 g/L versus 5.42 g/L), were also likely to consume higher volumes of alcohol ( $>441$  mL/week 16.6% versus 10.3%), to have been current smokers (25.8% versus 15.6%) and have a history of diabetes or prediabetes (9.9% versus 6.0%). Those that died were also more likely to have a low socio-economic status (39.0% versus 33.0%).

### Genetic associations with incident CHD events

The validity and statistical significance of the HR estimates were in line with the Cox proportional hazards assumptions tested. Adjusted hazard ratios representing associations between incident CHD events and genotype are presented in the left column of [Table 2](#). Unadjusted hazard ratios are provided in S1 Table in [S1 File](#). Only two SNPs (rs1800469 and rs6564851) were significantly associated with incident CHD events in the unadjusted model and both remained significant following adjustment for potential confounding variables. The minor allele for rs1800469 in *TGFB1* was associated with a per allele increased risk of incident CHD in the adjusted analysis (HR = 1.30; CI 95% 1.02–1.65;  $p = 0.04$ ). The minor allele for rs6564851 in *BCMO1* was associated with a per allele reduced risk of incident CHD in the adjusted analysis (HR = 0.76; CI 95% 0.60–0.96;  $p = 0.02$ ).

### Genetic associations with all-cause mortality

Adjusted hazard ratios representing associations between all-cause mortality and genotype are presented in the right column of [Table 2](#). Unadjusted hazard ratios are provided in S1 Table in [S1 File](#). Only one SNP (rs16944, *IL1B*) was significantly associated with all-cause mortality in both unadjusted and adjusted models (with a per allele HR = 1.18; CI 95% 1.05–1.33;  $p = 0.005$  in the adjusted model).

In additional all-cause mortality analyses that considered the number of minor alleles as a categorical variable, three SNPs were significantly associated with all-cause mortality ([Table 3](#)). Unadjusted hazard ratios are provided in S2 Table in [S1 File](#). Compared to no copies of the minor allele for *IL1B* rs16944, one copy was associated with an increased all-cause mortality risk (HR = 1.18; CI 95% 0.99–1.41;  $p = 0.06$ ), with two copies increasing the risk further (HR = 1.43; CI 95% 1.11–1.84;  $p = 0.005$ ). Two copies of the minor allele of rs1982037 in *TGFB1* was also significantly associated with all-cause mortality (HR = 1.56; CI 95% 1.00–2.42;  $p = 0.05$ ) compared with no copies. A single copy of the minor allele for *IL6* rs1800795 was associated with reduced all-cause mortality in the adjusted analysis (HR = 0.82; CI 95% 0.68–0.98;  $p = 0.03$ ) compared to no copies, although this was not significant for two copies of the

**Table 1. Summary characteristics for coronary heart disease outcomes and all-cause mortality for 2,010 Northern Ireland men who attended rescreen, excluding 324 men with pre-existing cardiovascular disease for CHD event analysis only.**

Parameter	CHD event			All-cause mortality		
	No (n = 1509)	Yes (n = 177)	p value	No (n = 1189)	Yes (n = 821)	p value
Age (years)						
Mean (SD)	64.6 (3.2)	64.5 (3.0)	0.58	<b>64.1 (3.0)</b>	<b>65.7 (3.1)</b>	<b>&lt;0.001</b>
BMI (kg/m <sup>2</sup> )						
Mean (SD)	27.4 (3.6)	27.2 (3.5)	0.67	27.4 (3.6)	27.5 (3.9)	0.26
Height (cm)						
Mean (SD)	<b>173.0 (6.6)</b>	<b>171.7 (6.9)</b>	<b>0.02</b>	172.8 (6.7)	172.3 (6.5)	0.11
SBP (mmHg)						
Mean (SD)	139.8 (19.8)	142.9 (20.2)	0.57	139.4 (19.6)	140.2 (21.1)	0.35
Total cholesterol (g/L)						
Mean (SD)	5.47 (0.97)	5.43 (1.00)	0.59	<b>5.42 (0.97)</b>	<b>5.28 (1.03)</b>	<b>0.003</b>
Total HDL-cholesterol (g/L)						
Mean (SD)	1.35 (0.36)	1.29 (0.37)	0.06	1.33 (0.33)	1.36 (0.93)	0.40
Total triglyceride (g/L)						
Mean (SD)	1.74 (1.00)	1.86 (0.99)	0.13	1.74 (0.97)	1.82 (1.16)	0.11
Physical activity (METs/week)						
Median (IQR)	87 (52–132)	92 (47–136)	0.97	84 (52–132)	90 (47–133)	0.51
Alcohol consumption (mL/week) n (%)						
None	588 (39.0)	76 (42.9)		<b>489 (41.1)</b>	<b>317 (38.6)</b>	
1–128	289 (19.2)	25 (14.1)		<b>228 (19.2)</b>	<b>136 (16.6)</b>	
129–265	270 (17.9)	31 (17.5)		<b>220 (18.5)</b>	<b>147 (17.9)</b>	
266–441	166 (11.0)	23 (13.0)		<b>129 (10.8)</b>	<b>85 (10.4)</b>	
>441	196 (13.0)	22 (12.4)	0.49	<b>123 (10.3)</b>	<b>136 (16.6)</b>	<b>0.002</b>
Smoking status n (%)						
Current smoker	<b>275 (18.2)</b>	<b>47 (26.6)</b>		<b>186 (15.6)</b>	<b>212 (25.8)</b>	
Former smoker	<b>654 (43.3)</b>	<b>73 (41.2)</b>		<b>514 (43.2)</b>	<b>392 (47.7)</b>	
Never smoked	<b>580 (38.4)</b>	<b>57 (32.2)</b>	<b>0.023</b>	<b>489 (41.1)</b>	<b>216 (26.3)</b>	<b>&lt;0.001</b>
History diabetes n (%)						
Yes	91 (6.0)	12 (6.8)		<b>71 (6.0)</b>	<b>81 (9.9)</b>	
No	1418 (94.0)	165 (93.2)	0.69	<b>1118 (94.0)</b>	<b>739 (90.0)</b>	<b>0.001</b>
Socio-economic status n (%)						
Low	527 (34.9)	54 (30.5)		<b>392 (33.0)</b>	<b>320 (39.0)</b>	
Middle	347 (23.0)	42 (23.7)		<b>289 (24.3)</b>	<b>160 (19.5)</b>	
High	634 (42.0)	81 (45.8)	0.48	<b>507 (42.6)</b>	<b>341 (41.5)</b>	<b>0.006</b>

BMI body mass index, SBP systolic blood pressure, HDL-cholesterol high-density lipoprotein cholesterol, MET metabolic equivalent task, SD standard deviation, IQR interquartile range

<https://doi.org/10.1371/journal.pone.0273333.t001>

minor allele (HR = 1.06; CI 95% 0.84–1.34; p = 0.63) compared to no copies. Kaplan-Meier survival curves for significantly associated SNPs for 0, 1 or 2 minor allele copies are presented in Fig 1.

### Testing the proportional hazards assumption

Time-dependent covariates added to the models in Tables 2 and 3 showed that the number attaining significance was in keeping with the number that would be expected by chance alone.

Table 2. Adjusted hazard ratios (HR) per minor allele for CHD events and all-cause mortality.

Gene (major/minor allele)	SNP ID	SNP MAF	CHD event	All-cause mortality
			HR (95% CI); <i>p</i> value	HR (95% CI); <i>p</i> value
<i>IL1A</i> (G/T)	rs17561	0.28	0.99 (0.78–1.26); 0.94	0.90 (0.79–1.02); 0.09
<i>IL1A</i> (C/T)	rs1800587	0.27	1.01 (0.80–1.29); 0.92	0.88 (0.78–1.00); 0.05
<i>IL1B</i> (G/A)	rs16944	0.30	0.93 (0.73–1.19); 0.58	<b>1.18 (1.05–1.33); 0.005</b>
<i>IL1RN</i> (T/C)	rs4251961	0.34	0.85 (0.67–1.08); 0.18	0.94 (0.84–1.06); 0.29
<i>IL6</i> (G/C)	rs1800795	0.38	1.03 (0.82–1.30); 0.80	0.99 (0.88–1.11); 0.83
<i>IL6</i> (T/C)	rs10499563	0.21	1.04 (0.79–1.37); 0.78	1.03 (0.89–1.18); 0.72
<i>IL6R</i> (A/C)	rs2228145	0.36	1.07 (0.85–1.35); 0.58	1.07 (0.95–1.21); 0.24
<i>IL10</i> (C/A)	rs1800872	0.18	1.18 (0.90–1.56); 0.23	1.00 (0.86–1.15); 0.97
<i>IL17A</i> (A/G)	rs2275913	0.30	1.13 (0.90–1.42); 0.30	1.04 (0.93–1.18); 0.49
<i>IL17F</i> (T/C)	rs763780	0.04	1.19 (0.71–2.00); 0.50	0.87 (0.65–1.17); 0.36
<i>TGFB1</i> (C/T)	rs1800469	0.25	<b>1.30 (1.02–1.65); 0.04</b>	1.09 (0.96–1.24); 0.17
<i>TGFB1</i> (G/A)	rs1982037	0.15	0.88 (0.63–1.22); 0.44	1.12 (0.96–1.31); 0.14
<i>S100A8</i> (T/C)	rs3795391	0.11	0.77 (0.53–1.13); 0.18	1.17 (0.99–1.38); 0.06
<i>TLR4</i> (A/G)	rs4986790	0.07	0.95 (0.62–1.45); 0.79	0.82 (0.65–1.03); 0.09
<i>COX2</i> (G/C)	rs6681231	0.13	0.86 (0.62–1.20); 0.37	1.05 (0.90–1.22); 0.55
<i>NAT2</i> (A/G)	rs1495741	0.19	0.90 (0.68–1.19); 0.46	0.93 (0.80–1.07); 0.30
<i>VDR</i> (T/C)	rs731236	0.35	1.09 (0.86–1.37); 0.48	1.02 (0.90–1.15); 0.78
<i>VDR</i> (G/A)	rs1544410	0.35	1.10 (0.87–1.39); 0.41	1.03 (0.91–1.16); 0.65
<i>VDR</i> (A/C)	rs7975232	0.42	0.90 (0.72–1.13); 0.36	0.97 (0.87–1.09); 0.62
<i>VDR</i> (C/T)	rs2228570	0.35	1.13 (0.90–1.41); 0.29	1.02 (0.91–1.15); 0.70
<i>BCMO1</i> (G/T)	rs6564851	0.39	<b>0.76 (0.60–0.96); 0.02</b>	1.00 (0.89–1.13); 0.96
<i>BCMO1</i> (C/T)	rs7501331	0.01	1.05 (0.81–1.36); 0.72	1.06 (0.93–1.21); 0.39
<i>ARL15</i> (A/G)	rs4311394	0.20	1.30 (1.00–1.69); 0.05	0.92 (0.80–1.06); 0.25
<i>SLC23A1</i> (G/A)	rs33972313	0.04	1.22 (0.69–2.14); 0.50	1.02 (0.75–1.38); 0.93
<i>CD36</i> (C/T)	rs13230419	0.39	0.80 (0.63–1.02); 0.07	1.00 (0.89–1.12); 0.98
<i>CDKN2B-AS1</i> (C/G)	rs1333049	0.45	0.85 (0.68–1.06); 0.14	0.94 (0.84–1.05); 0.28
<i>CDKN2B-AS1</i> (C/G)	rs518394	0.38	0.99 (0.79–1.25); 0.94	0.96 (0.85–1.08); 0.50
<i>CDKN2B-AS1</i> (A/G)	rs1360590	0.42	1.04 (0.82–1.30); 0.76	1.04 (0.93–1.17); 0.50
<i>TNFRSF11B</i> (C/G)	rs2073618	0.39	0.94 (0.75–1.19); 0.63	0.90 (0.80–1.02); 0.09
<i>TNFRSF11B</i> (C/A)	rs1872426	0.39	0.95 (0.75–1.19); 0.63	0.91 (0.81–1.02); 0.10
<i>TNFSF11</i> (A/G)	rs2277438	0.15	0.91 (0.67–1.24); 0.57	0.99 (0.85–1.15); 0.86
<i>GLT6D1</i> (C/G)	rs1537415	0.35	1.04 (0.82–1.32); 0.77	1.05 (0.93–1.18); 0.42
<i>FNI</i> (G/A)	rs33996776	0.26	1.22 (0.96–1.54); 0.10	1.04 (0.92–1.18); 0.52

The Cox Proportional HRs are adjusted for age (years), BMI (kg/m<sup>2</sup>), SBP (mmHg), total cholesterol (g/L), total HDL-cholesterol (g/L), total triglyceride (g/L), physical activity (METs/week), alcohol consumption (mL/week), smoking status, previous history of diabetes or pre-diabetes and socio-economic status. HR hazard ratio, CI confidence intervals, MAF Minor Allele Frequency

<https://doi.org/10.1371/journal.pone.0273333.t002>

## Discussion

This study evaluated associations between 33 SNPs and incident coronary heart disease events and all-cause mortality in 2,010 men from Northern Ireland enrolled in the PRIME study. We observed a reduction in risk associated with the minor allele of rs6564851 in *BCMO1* and incident coronary events, in contrast to the observed increased risk associated with the minor allele of *TGFB* rs1800469. In addition, there was a significant association between all-cause mortality and *IL1B* rs16944. Of note, we failed to replicate some of the previously reported associations with CVD events (*IL6* rs1800795, *IL6* rs228145, *IL10* rs1800872, *IL17A* rs2275913,



**Table 3. Adjusted all-cause mortality hazard ratios (HR) categorical analysis.**

Gene (major/minor allele)	SNP ID	All-cause mortality	
		HR (95% CI); <i>p</i> value adjusted	
		1 copy minor allele	2 copies minor allele
<i>IL1A</i> (G/T)	rs17561	0.93 (0.79–1.10); 0.41	0.77 (0.57–1.03); 0.08
<i>IL1A</i> (C/T)	rs1800587	0.88 (0.74–1.04); 0.14	0.78 (0.58–1.04); 0.09
<i>IL1B</i> (G/A)	rs16944	1.18 (0.99–1.41); 0.06	<b>1.43 (1.11–1.84); 0.01</b>
<i>IL1RN</i> (T/C)	rs4251961	1.11 (0.93–1.32); 0.24	0.75 (0.57–0.98); 0.04
<i>IL6</i> (G/C)	rs1800795	<b>0.82 (0.68–0.98); 0.03</b>	1.06 (0.84–1.34); 0.63
<i>IL6</i> (T/C)	rs10499563	0.96 (0.81–1.14); 0.64	1.25 (0.88–1.78); 0.22
<i>IL6R</i> (A/C)	rs2228145	1.03 (0.86–1.23); 0.76	1.22 (0.96–1.55); 0.11
<i>IL10</i> (C/A)	rs1800872	1.01 (0.85–1.20); 0.91	0.94 (0.61–1.46); 0.79
<i>IL17A</i> (A/G)	rs2275913	1.00 (0.83–1.19); 0.96	1.13 (0.88–1.45); 0.33
<i>IL17F</i> (T/C)	rs763780	0.96 (0.70–1.30); 0.77	-
<i>TGFB1</i> (C/T)	rs1800469	1.09 (0.92–1.30); 0.32	1.25 (0.93–1.68); 0.13
<i>TGFB1</i> (G/A)	rs1982037	1.03 (0.86–1.24); 0.72	<b>1.56 (1.00–2.42); 0.05</b>
<i>S100A8</i> (T/C)	rs3795391	1.18 (0.97–1.42); 0.10	1.28 (0.70–2.34); 0.43
<i>TLR4</i> (A/G)	rs4986790	0.84 (0.66–1.07); 0.16	0.25 (0.04–1.82); 0.17
<i>COX2</i> (G/C)	rs6681231	1.05 (0.87–1.27); 0.60	0.98 (0.61–1.57); 0.93
<i>NAT2</i> (A/G)	rs1495741	0.99 (0.83–1.18); 0.93	0.70 (0.45–1.10); 0.13
<i>VDR</i> (T/C)	rs731236	1.03 (0.86–1.22); 0.77	1.04 (0.80–1.34); 0.77
<i>VDR</i> (G/A)	rs1544410	1.02 (0.85–1.21); 0.87	1.07 (0.83–1.37); 0.60
<i>VDR</i> (A/C)	rs7975232	1.07 (0.89–1.30); 0.47	0.92 (0.73–1.17); 0.50
<i>VDR</i> (C/T)	rs2228570	1.11 (0.93–1.33); 0.25	1.05 (0.83–1.34); 0.67
<i>BCMO1</i> (G/T)	rs6564851	0.89 (0.74–1.07); 0.20	1.04 (0.82–1.30); 0.77
<i>BCMO1</i> (C/T)	rs7501331	0.98 (0.83–1.17); 0.84	1.38 (1.00–1.91); 0.05
<i>ARL15</i> (A/G)	rs4311394	0.90 (0.75–1.07); 0.23	0.92 (0.63–1.34); 0.66
<i>SLC23A1</i> (G/A)	rs33972313	1.00 (0.73–1.36); 0.99	-
<i>CD36</i> (C/T)	rs13230419	0.93 (0.78–1.13); 0.47	1.02 (0.80–1.28); 0.90
<i>CDKN2B-AS1</i> (C/G)	rs1333049	1.04 (0.85–1.26); 0.72	0.87 (0.69–1.10); 0.26
<i>CDKN2B-AS1</i> (C/G)	rs518394	1.07 (0.89–1.28); 0.49	0.85 (0.66–1.10); 0.22
<i>CDKN2B-AS1</i> (A/G)	rs1360590	1.02 (0.84–1.24); 0.85	1.11 (0.88–1.40); 0.39
<i>TNFRSF11B</i> (C/G)	rs2073618	0.99 (0.83–1.19); 0.93	0.80 (0.62–1.02); 0.07
<i>TNFRSF11B</i> (C/A)	rs1872426	0.99 (0.83–1.19); 0.92	0.80 (0.62–1.02); 0.07
<i>TNFSF11</i> (A/G)	rs2277438	0.96 (0.80–1.16); 0.69	1.18 (0.76–1.83); 0.47
<i>GLT6D1</i> (C/G)	rs1537415	1.17 (0.98–1.40); 0.09	1.05 (0.81–1.35); 0.74
<i>FNI</i> (G/A)	rs33996776	1.03 (0.87–1.23); 0.71	1.08 (0.80–1.46); 0.60

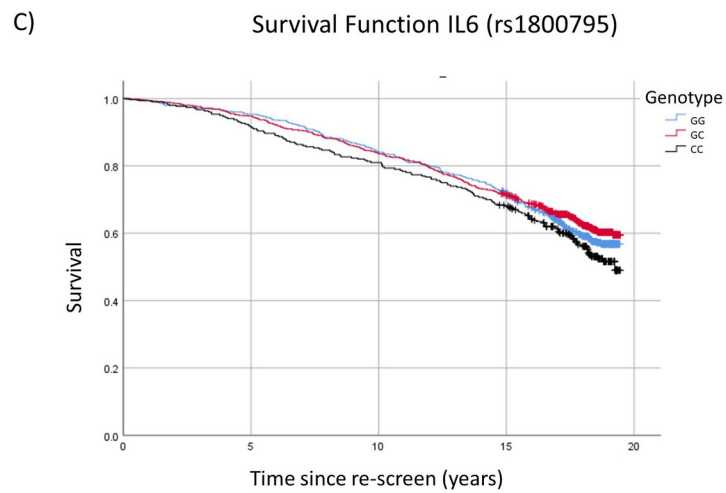
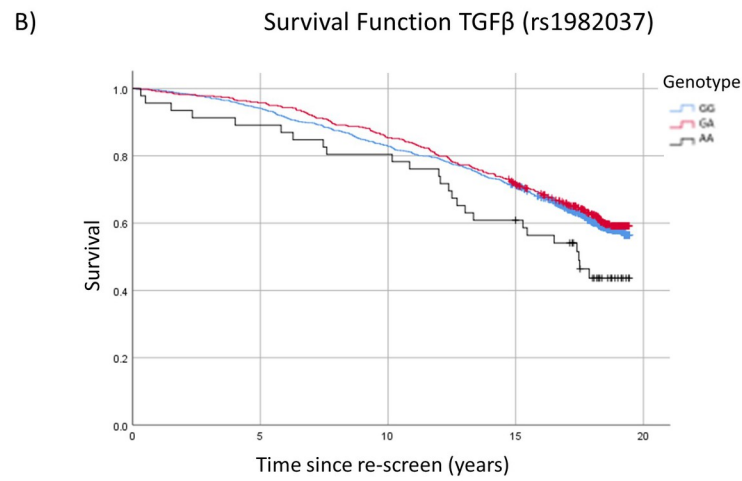
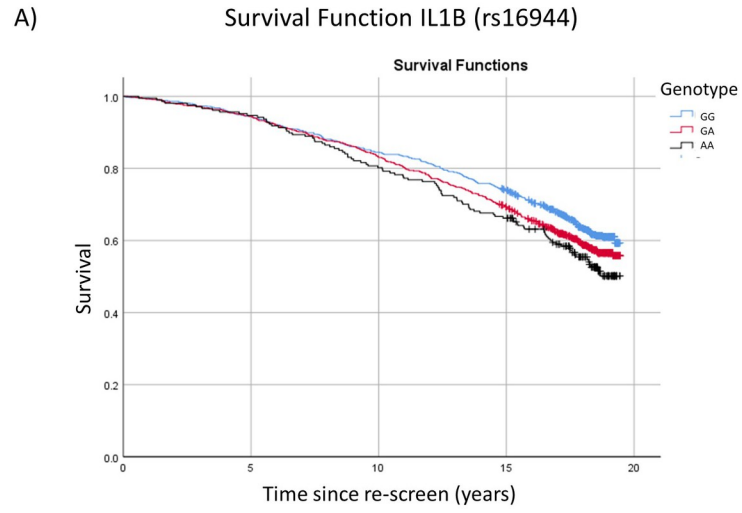
The Cox Proportional HRs are adjusted for age (years), BMI (kg/m<sup>2</sup>), SBP (mmHg), total cholesterol (g/L), Total HDL-cholesterol (g/L), total triglyceride (g/L), physical activity (METs/week), alcohol consumption (mL/week), smoking status, previous history of diabetes or pre-diabetes and socio-economic status. *HR* hazard ratio, *CI* confidence intervals.

<https://doi.org/10.1371/journal.pone.0273333.t003>

*VDR* rs2228570, *ARL15* rs4311394, *CDKN2B-AS1* rs1333049, *TNFRSF11B* rs2073618) [18–36].

### Association between *TGFB1* rs1800469 and CHD events

Transforming growth factor beta (TGF- $\beta$ ) is a cytokine family that exists as three isoforms TGF- $\beta$ 1, TGF- $\beta$ 2 and TGF- $\beta$ 3, encoded by genes *TGFB1*, *TGFB2* and *TGFB3* respectively [42].



**Fig 1. Kaplan-Meier survival analysis of all-cause mortality for significantly associated single nucleotide polymorphisms.** A) *IL1B* rs16944 B) *TGFB* rs1982037 C) *IL6* rs1800795.

<https://doi.org/10.1371/journal.pone.0273333.g001>

TGF- $\beta$  influences several cellular processes [43, 44] and has been implicated in several diseases including CVD. TGF- $\beta$  has been reported as a protective cytokine against atherosclerosis [45], acting to promote plaque stabilisation [46] and reduce endothelial adhesion by T lymphocytes [47] and neutrophils [48, 49]. TGF- $\beta$  has been implicated both in early atherosclerotic disease and in disease progression [49] and increases inflammation and collagen dependent stiffening of vessel walls [50, 51]. Lower TGF- $\beta$  levels have been reported in patients with severe atherosclerosis [52]. In contrast, higher levels of TGF- $\beta$  have been associated with increased myocardial fibrosis and worse outcomes for heart failure [53, 54].

The minor allele of the *TGFB1* promotor SNP rs1800469 is present in approximately 30% of Caucasians [55]. Twin studies have shown plasma concentrations for TGF- $\beta$ 1 to be twice as high for those homozygous for the minor allele compared to the homozygous wild-type genotype [56]. This is thought to result from preferential binding of the activator protein 1 to the major allele, down regulating *TGFB1* promotor expression and decreasing levels of TGF- $\beta$ 1 [57].

In the present study, the minor allele of *TGFB1* rs1800469 was associated with an increased risk of incident coronary events (HR = 1.30; CI 95% 1.02–1.65; p 0.04), supporting findings from a recent meta-analysis that evaluated associations between rs1800496 and myocardial infarction (MI), identifying significant associations between homozygous and heterozygous minor allele genotypes and increased MI risk, compared to major allele homozygotes [58]. In contrast, a smaller NI case-control study comprising 563 cases and 629 controls, found no association between rs1800496 and MI [24]. A retrospective case-control study in men and women from a German population reported a lower risk of MI associated with the homozygous major allele genotype in men only (inverse of higher risk associated with the minor allele), with an odds ratio of 0.49 (CI 0.27–0.87) [59]. In contrast, the larger prospective Rotterdam study (n = 6,456) failed to detect any association between rs1800469 and MI [60]. Although an increased risk of stroke associated with the rs1800469 minor allele (HR = 1.26; CI 95% 1.06–1.49) [60] was reported in a previous meta-analysis, other studies have also reported no association between rs1800469 and ischaemic stroke [61].

### Association between *BCMO1* rs6564851 and CHD events

Vitamin A (retinol) is involved in several metabolic processes including vision [62], embryonic development [63] and gene expression [64]. Vitamin A is consumed in the diet as preformed vitamin A (65% of intake) or beta-carotene (35% of intake) [65]. The  $\beta$ -carotene-15, 15'-monooxygenase 1 (*BCMO1*) gene encodes an enzyme which catalyses oxidative cleavage of  $\beta$ -carotene into two molecules of retinol in the gastric mucosa [66, 67]. A common SNP, rs6564851, lies upstream from the *BCMO1* gene and the minor allele was significantly associated with higher plasma levels of beta-carotene attributed to reduced *BCMO1* enzyme activity, resulting in reduced conversion of beta-carotene to retinol [68, 69].

The ATBC study, a prospective investigation of 29,000 men over 31 years of follow-up, found that higher plasma beta-carotene levels were associated with both lower all-cause and CVD-specific mortality [70]. Previous studies in the PRIME cohort reported inverse associations between retinol levels and CVD risk, and both beta-carotene and retinol levels inversely associated with all-cause mortality, in French and Northern Irish men over 10 years of follow-up [41]. The negative associations between plasma retinol and CVD were also demonstrated previously in a separate nested case-control study of PRIME participants [71].

The results of the present study demonstrate a novel association between rs6564851 and a reduced risk of incident CHD events (HR = 0.76; CI 95% 0.60–0.96;  $p$  0.02). A small nested case-control study of Han Chinese participants with dyslipidaemia found no association between rs65644851 and coronary heart disease, although the authors raised concerns about their findings as their genotyping failed to meet a Hardy-Weinberg equilibrium quality control metric [72]. Rs6564851 has also previously been associated with higher plasma HDL cholesterol levels [73], a reported CVD protective factor [74]. While this may represent a mechanism by which rs6564851 reduces CVD risk, some genetic mechanisms that raise HDL cholesterol have not necessarily led to associations with lower CVD risk [75]. Regardless, this does not explain the effect observed in this study as HDL-cholesterol levels were adjusted for in the Cox regression model. This suggests HDL-cholesterol may act independently on CVD risk from the effect exerted by rs6564851.

The potential mechanism underlying the association between rs6564851 and incident coronary events may lie beyond traditional CVD risk factors. Yabuta and colleagues investigated the effects of daily beta-carotene supplementation by rs6564851 genotype on telomere length in buccal cells [76]. Their findings suggested homozygous individuals for the minor allele were more likely to exhibit lower levels of telomere shortening following daily beta-carotene intake. While the authors acknowledged the limited sample size of 70 Japanese participants, their findings warrant further investigation of the effects of beta-carotene supplementation and rs6564851 genotype on the mitotic aging of cells.

### Association of *IL1B* rs16944 and all-cause mortality

Interleukin 1-beta (IL-1 $\beta$ ) is a pro-inflammatory cytokine, implicated in multiple disease states, including inflammation and pain [77–79] that hinders the functionality of the myocardium [80]. The *IL1B* promoter SNP rs16944 has been widely studied with reported associations with many diseases including lung cancer [81], rheumatoid arthritis [82] and myocardial ischaemia [83]. The only SNP significantly associated with all-cause mortality in the present study was *IL1B* rs16944, associated with an 18% increased risk of death per minor allele in adjusted models (HR = 1.18; CI 95% 1.05–1.33;  $p$  = 0.005).

A case-control study by Jiménez-Sousa et al. also reported increased sepsis related mortality with rs16944 [84]. Their study evaluated post-cardiac or abdominal surgery patients who developed systemic inflammatory response syndrome post-surgery. Despite a limited sample size (205 cases, 262 controls), the likelihood of mortality associated with rs16944 more than doubled (OR = 2.67; CI 95% 1.07–4.97;  $p$  = 0.04), highlighting the significant influence this SNP may have on sepsis-related mortality. In contrast, the *IL1B* rs16944 has also been previously reported in association with lower risk of both MI and stroke in patients with early disease onset [85], indicating the increased risk of death observed in this study may represent non-CHD related death.

### Strengths and limitations of the current study

There are several strengths to this study including the reasonable study size ( $n$  = 2,010) and large number of lifestyle, anthropometric and biochemical variables reported for each participant enabling adjustment for well-recognized CVD risk factors. Participants were of similar age and ethnicity and only a relatively small percentage were lost to follow-up. Only those free from CVD at study entry were included in the CHD time to event analysis, making this a true prospective study. There was long follow-up of participants for over 10 years for CHD events and over 15 years for all-cause mortality. The selection of participants was representative of

the socio-economic make up of Northern Ireland, adding to the relevance of the results in a population context, where CVD prevalence is high [2].

However, there were also several limitations which may have limited our ability to detect previously reported associations. To minimise sampling bias, the study period defined began at rescreen in 2001–2003 –over 10 years after the original PRIME participants were recruited. This raises several issues including potential survival bias as those who died at a younger age were excluded from our analysis. Men with CVD prior to rescreen were also excluded from the incident CHD analysis, meaning high risk individuals with earlier onset CVD may not have been captured within the study time-period. There is a concern that this study period may have included men at an older age than many experience their first CHD event, with participant ages ranging between 58 and 74 years. Recent research has also suggested there is a decreased incidence of MI in the 50 to 70 years age group compared to <50 years and >70 years [86]. Despite this, our study observed 177 CHD events in 1,686 men over approximately 10 years of follow-up (10.5% participants experiencing a CHD event) compared to 169 CHD events in 2,390 NI men in the initial baseline PRIME study period over 10 years of follow-up (7.1%), suggesting our study did sufficiently capture CHD events. Another potential issue of concern was that only men who attended follow-up and remained as participants in the PRIME study were eligible for inclusion in this study—these men may have been more healthy or ‘health aware’ than those who discontinued participation in the study. Our study only included men and participants were predominantly white, limiting the generalisability of the results at a population and global level. While the adjusted model included 12 well-recognised CVD risk factors, it is possible there may have been residual confounding by variables not considered in our analysis.

Finally, for some SNPs, the MAF was low in the study population. For example, the homozygous minor allele for *SLC23A1* rs33972313 was present in only two participants. The low MAF of some SNPs meant that our study was underpowered to detect association, should it exist. While many of the SNPs included in this study were selected on the basis of a prior hypothesis of association with CVD events or all-cause mortality, a Bonferroni correction for multiple testing indicates none would retain their significance at the  $P < 0.05/33 = 0.0015$  level.

## Conclusion

In conclusion, we have shown associations between *TGFB1* rs1800469 and *BCMO1* rs6564851 with incident coronary events in male participants of the PRIME study. In addition, *IL1B* rs16944 was also significantly associated with all-cause mortality. The findings of this study add to the existing literature of disease association with these SNPs and increase the knowledge base of the genetic risk associated with CHD and all-cause mortality. In the future SNP associations, such as those studied here, may be used to identify individuals and families at higher CVD risk, allowing more targeted education on modifiable risk factors, in particular for those in whom aggressive treatment is required, and perhaps enabling the improved prediction of further event outcomes. Additional research is needed to support the associations reported here, particularly for the association between incident coronary events and *BCMO1* rs6564851, as to the best of our knowledge, this is a novel finding.

## Supporting information

**S1 File. Unadjusted hazard ratios for coronary heart disease events and all-cause mortality.** (DOCX)

## Acknowledgments

We acknowledge the contributions from the PRIME study participants over the duration of the investigation period. The PRIME Study was organised under an agreement between INSERM and the Merck, Sharpe and Dohme-Chibret Laboratory, with the following participating Laboratories:

The Strasbourg MONICA Project, Strasbourg, France (D. Arveiler, B. Haas).

The Toulouse MONICA Project, INSERM U558, Toulouse, France (J. Ferrières, JB. Ruidavets).

The Lille MONICA Project, INSERM U744, Lille, France (P. Amouyel, M. Montaye).

The Department of Epidemiology and Public Health, Queen's University Belfast, NI (A. Evans, J. Yarnell, F. Kee).

## Author Contributions

**Conceptualization:** Gerry J. Linden, Frank Kee, Gareth J. McKay.

**Data curation:** Gerry J. Linden, Pascal P. McKeown, Gareth J. McKay.

**Formal analysis:** Rachel E. Mooney, Jayne V. Woodside, Christopher C. Patterson, Gareth J. McKay.

**Funding acquisition:** Gerry J. Linden, Frank Kee.

**Investigation:** Rachel E. Mooney, Gerry J. Linden, Lewis Winning, Katie Linden, Pascal P. McKeown, Christopher C. Patterson, Gareth J. McKay.

**Methodology:** Gerry J. Linden, Frank Kee, Christopher C. Patterson.

**Project administration:** Gerry J. Linden.

**Writing – original draft:** Rachel E. Mooney, Gareth J. McKay.

**Writing – review & editing:** Rachel E. Mooney, Gerry J. Linden, Lewis Winning, Katie Linden, Frank Kee, Pascal P. McKeown, Jayne V. Woodside, Christopher C. Patterson, Gareth J. McKay.

## References

1. WHO [Internet]. Cardiovascular diseases (CVDs)—Fact Sheet, 2017, [cited 2021 Feb 25] Available from: [https://www.who.int/news-room/fact-sheets/detail/cardiovascular-diseases-\(cvds\)](https://www.who.int/news-room/fact-sheets/detail/cardiovascular-diseases-(cvds))
2. British Heart Foundation [Internet], Heart and Circulatory Disease Statistics -2020, [cited 2021 Mar 25]. Available from: <https://www.bhf.org.uk/what-we-do/our-research/heart-statistics/heart-statistics-publications/cardiovascular-disease-statistics-2020>
3. Estruch R, Ros E, Salas-Salvado J, Covas MI, Corella D, Aros F et al. Primary prevention of cardiovascular disease with a Mediterranean diet supplemented with extra-virgin olive oil or nuts. *New England Journal of Medicine*. 2018; 378:e34, <https://doi.org/10.1056/NEJMoa1800389> PMID: 29897866
4. Wilson PWF, D'Agostino RB, Sullivan L, Parise H, Kennel WB. Overweight and obesity as determinants of cardiovascular risk: the Framingham experience. *Archives of Internal Medicine*. 2002; 162(16):1867–1872. <https://doi.org/10.1001/archinte.162.16.1867> PMID: 12196085
5. Hacksaw A, Morris J, Boniface S, Tang J, Milenkovic D. Low cigarette consumption and risk of coronary heart disease and stroke: meta-analysis of 141 cohort studies in 55 study reports. *British Medical Journal*. 2018; 363:k5035. <https://doi.org/10.1136/bmj.k5035> PMID: 30487298
6. Rodgers JL, Jones J, Bolleddu S, Vanthenapalli S, Rodgers LE, Shah K et al. Cardiovascular risks associated with gender and aging. *Journal of Cardiovascular Development and Disease*. 2019; 6(2):19. <https://doi.org/10.3390/jcdd6020019> PMID: 31035613
7. Bots S, Peters S, Woodward M. Sex differences in coronary heart disease and stroke mortality: a global assessment of the effect of ageing between 1980 and 2010. *British Medical Journal Global Health*. 2017; 2(2):e000298. <https://doi.org/10.1136/bmjgh-2017-000298> PMID: 28589033

8. Lane D, Beavers DG, Lip G. Ethnic differences in blood pressure and the prevalence of hypertension in England. *Journal of Human Hypertension*. 2002; 16:267–273. <https://doi.org/10.1038/sj.jhh.1001371> PMID: 11967721
9. Bhopal R. Epidemic of cardiovascular disease in South Asians. *British Medical Journal*. 2002; 324 (7338):625–626. <https://doi.org/10.1136/bmj.324.7338.625> PMID: 11895809
10. de Mestral C, Stringhini S. Socioeconomic Status and Cardiovascular Disease: an Update. *Current Cardiology Reports*. 2017; 19:115. <https://doi.org/10.1007/s11886-017-0917-z> PMID: 28965316
11. Miller NA, Farrow EG, Gibson M, Willig LK, Twist G, Yoo B et al. A 26-hour system of highly sensitive whole genome sequencing for emergency management of genetic diseases. *Genome Medicine*. 2015; 7:100. <https://doi.org/10.1186/s13073-015-0221-8> PMID: 26419432
12. Dainis AM, Ashley EA. Cardiovascular Precision Medicine in the Genomics Era. *Journal of American College of Cardiology: Basic to Translational Science*. 2018; 3(2):313–326. <https://doi.org/10.1016/j.jacbts.2018.01.003> PMID: 30062216
13. Khera AV, Chaffin M, Aragam KG, Haas ME, Roselli C, Choi SH et al. Genome-wide polygenic scores for common diseases identify individuals with risk equivalent to monogenic mutations. *Nature Genetics*. 2018; 50:1219–1224. <https://doi.org/10.1038/s41588-018-0183-z> PMID: 30104762
14. Ackerman MJ, Priori SG, Willems S, Berul C, Brugada R, Calkins H et al. HRS/EHRA Expert Consensus Statement on the State of Genetic Testing for the Channelopathies and Cardiomyopathies: This document was developed as a partnership between the Heart Rhythm Society (HRS) and the European Heart Rhythm Association (EHRA). *Europace*. 2011; 13:1077–1109. <https://doi.org/10.1093/europace/eur245> PMID: 21810866
15. Yarnell JWG. The PRIME Study: Classical risk factors do not explain the several fold differences in risk of coronary heart disease between France and Northern Ireland. *QJM*, 1998; 91:667–676. <https://doi.org/10.1093/qjmed/91.10.667> PMID: 10024924
16. Akdis M, Burgler S, Cramer R, Eiwegger T, Fujita H, Gomez E, et al. Interleukins, from 1 to 37, and interferon- $\gamma$ : receptors, functions, and roles in diseases, *Journal of Allergy and Clinical Immunology*. 2011; 127(3):701–21. <https://doi.org/10.1016/j.jaci.2010.11.050> PMID: 21377040
17. Golia E, Limongelli G, Natale F, Fimiani F, Maddaloni V, Pariggiaro I et al. Inflammation and Cardiovascular Disease: From Pathogenesis to Therapeutic Target. *Current Atherosclerosis Reports*. 2014; 16 (9):435. <https://doi.org/10.1007/s11883-014-0435-z> PMID: 25037581
18. González-Castro T, Hernández-Díaz Y, Pérez-Hernández N, Tovilla-Zarate CA, Juárez-Rojop IE, López-Narvaez ML et al. Interleukin 6 (rs1800795) gene polymorphism is associated with cardiovascular diseases: a meta-analysis of 74 studies with 86,229 subjects. *EXCLI Journal*. 2019; 18:331–355. <https://doi.org/10.17179/excli2019-1248> PMID: 31338006
19. IL6R Genetics Consortium Emerging Risk Factors Collaboration; Sarwar N, Butterworth AS, Freitag DF, Gregson J, Willeit P, Gorman et al. Interleukin-6 receptor pathways in coronary heart disease: a collaborative meta-analysis of 82 studies. *The Lancet*. 2012; 379(9822):1205–1213. [https://doi.org/10.1016/S0140-6736\(11\)61931-4](https://doi.org/10.1016/S0140-6736(11)61931-4) PMID: 22421339
20. Kaur N, Singh J, Reddy S. Association of IL-8-251 A/T rs4073 and IL-10 rs1800872 -592C/A Polymorphisms and Coronary Artery Disease in North Indian Population. *Biochemical Genetics*. 2019; 57:129–146. <https://doi.org/10.1007/s10528-018-9880-7> PMID: 30073578
21. Huang H-T, Lu Y-L, Wang R, Qin HM, Wang C-F, Wang JL et al. The association of IL-17A polymorphisms with IL-17A serum levels and risk of ischemic stroke. *Oncotarget*. 2017; 8(61):103499–103508. <https://doi.org/10.18632/oncotarget.21498> PMID: 29262579
22. Maia J, da Silva AS, do Carmo RF, de Mendonca TF, Griz LHM, Moura P et al. The association between vitamin D receptor gene polymorphisms (TaqI and FokI) Type 2 diabetes, and micro-/macrovascular complications in postmenopausal women. *The Application of Clinical Genetics*. 2016; 9:131–136. <https://doi.org/10.2147/TACG.S101410> PMID: 27536155
23. Pereira RMR, Figueiredo CP, Cha CC, Caparbo VF, Oliveira RM, Franco AS et al. Associations between OPG and RANKL polymorphisms, vertebral fractures, and abdominal aortic calcification in community-dwelling older subjects: the Sao Paulo Ageing & Health Study (SPAH). *Osteoporosis International*. 2016; 27:3319–3329. <https://doi.org/10.1007/s00198-016-3664-x> PMID: 27311721
24. Cambien F, Ricard S, Troesch A, Mallet C, Générénaz L, Evans A et al. Polymorphisms of the Transforming Growth Factor- $\beta$ 1 Gene in Relation to Myocardial Infarction and Blood Pressure. *Hypertension*. 1996; 28(5):881–887. <https://doi.org/10.1161/01.hyp.28.5.881> PMID: 8901839
25. Morange PE, Tiret L, Saut N, Luc G, Arveiler D, Ferrieres J, et al, TLR4/Asp299Gly, CD14/C-260T, plasma levels of the soluble receptor CD14 and the risk of coronary heart disease: The PRIME Study, *European Journal of Human Genetics* 2004, 12; 1041–1049. <https://doi.org/10.1038/sj.ejhg.5201277> PMID: 15367917

26. Mesa F, O'Valle F, Rizzo M, Cappello F, Donos N, Parkar M et al. Association between COX-2 rs 6681231 genotype and interleukin-6 in periodontal connective tissue. A pilot study. *Public Library of Science One*. 2014; 9(2):e87023. <https://doi.org/10.1371/journal.pone.0087023> PMID: 24551049
27. Sun X, Meng H, Shi D, Xu L, Zhang L, Chen Z et al. Analysis of plasma calprotectin and polymorphisms of S100A8 in patients with aggressive periodontitis. *Journal of Periodontal Research*. 2011; 46(3):354–60. <https://doi.org/10.1111/j.1600-0765.2011.01350.x> PMID: 21463326
28. Teslovich TM, Musunuru K, Smith AV, Edmondson AC, Stylianou IM, Koseki M et al. Biological, clinical and population relevance of 95 loci for blood lipids. *Nature*. 2010; 466:707–13. <https://doi.org/10.1038/nature09270> PMID: 20686565
29. Dastani Z, Pajukanta P, Marcić M, Rudzicz N, Ruel I, Bailey SD, et al. Fine mapping and association studies of a high-density lipoprotein cholesterol linkage region on chromosome 16 in French-Canadian subjects. *European Journal Human Genetics*. 2010; 18(3):342–7. <https://doi.org/10.1038/ejhg.2009.157> PMID: 19844255
30. Kobylecki CJ, Afzal S, Davey Smith G, Nordestgaard BG. Genetically high plasma vitamin C, intake of fruit and vegetables, and risk of ischemic heart disease and all-cause mortality: a Mendelian randomization study. *American Journal Clinical Nutrition*. 2015; 101(6):1135–43.
31. Love-Gregory L, Sherva R, Sun L, Wasson J, Schappe T, Doria A, et al. Variants in the CD36 gene associate with the metabolic syndrome and high-density lipoprotein cholesterol. *Human Molecular Genetics*. 2008; 17(11):1695–704. <https://doi.org/10.1093/hmg/ddn060> PMID: 18305138
32. Bell S, Gibson JT, Harshfield EL, Markus HS. Is periodontitis a risk factor for ischaemic stroke, coronary artery disease and subclinical atherosclerosis? A Mendelian randomization study. *Atherosclerosis*. 2020; 313:111–117. <https://doi.org/10.1016/j.atherosclerosis.2020.09.029> PMID: 33038664
33. Zhang Y, Zhou X, Krepinsky JC, Wang C, Segbo J, Zheng F. Association study between fibronectin and coronary heart disease. *Clinical Chemistry and Laboratory Medicine*. 2006; 44(1):37–42. <https://doi.org/10.1515/CCLM.2006.008> PMID: 16375583
34. Richards JB, Waterworth D, O'Rahilly S, Hivert MF, Loos RJF, Perry JRB et al. A Genome-Wide Association Study Reveals Variants in ARL15 that Influence Adiponectin Levels. *Public Library of Science Genetics*. 2009; 5(12):100768. <https://doi.org/10.1371/journal.pgen.1000768> PMID: 20011104
35. Congrains A, Kamide K, Oguro R, Yasuda O, Miyata K, Yamamoto E, et al. Genetic variants at the 9p21 locus contribute to atherosclerosis through modulation of ANRIL and CDKN2A/B. *Atherosclerosis*. 2012; 220(2):449–455. <https://doi.org/10.1016/j.atherosclerosis.2011.11.017> PMID: 22178423
36. Miramontes-González JP, Usategui-Martín R, de Isla LP, Alonso R, Muñoz-Grijalvo O, Díaz-Díaz JL et al. VEGFR2 and OPG genes modify the risk of subclinical coronary atherosclerosis in patients with familial hypercholesterolemia. *Atherosclerosis*. 2019; 285:17–22. <https://doi.org/10.1016/j.atherosclerosis.2019.03.019> PMID: 30991288
37. Ducimetière P, Ruidavets JB, Montaye M, Haas B, Yarnell J; PRIME study group. Five-year incidence of angina pectoris and other forms of coronary heart disease in healthy men aged 50–59 in France and Northern Ireland: The Prospective Epidemiological Study of Myocardial Infarction (PRIME) Study. *International Journal of Epidemiology*. 2001; 30(5):1057–62. <https://doi.org/10.1093/ije/30.5.1057> PMID: 11689522
38. Winning L, Patterson CC, Linden K, Evans A, Yarnell J, McKeown PP et al. Periodontitis and risk of prevalent and incident coronary heart disease events. *Journal of Clinical Periodontology*. 2020; 47(12):1446–1456. <https://doi.org/10.1111/jcpe.13377> PMID: 32998173
39. Winning L, Patterson CC, Linden K, Cullen KM, Kee F, Linden GJ. Systemic inflammation and the relationship between periodontitis, edentulism, and all-cause mortality: A 17-year prospective cohort study. *Journal of Clinical Periodontology*. 2021. Epub ahead of print. <https://doi.org/10.1111/jcpe.13510> PMID: 34109647
40. Wagner A, Simon C, Evans A, Ducimetiere P, Bongard V, Montaye M et al. Physical activity patterns in 50–59 year men in France and Northern Ireland. Associations with socio-economic status and health behaviour. *European Journal of Epidemiology*. 2002; 18(4):321–9.
41. McKay GJ, Lyner N, Linden GJ, Kee F, Moitry M, Biasch K et al. Association of low plasma antioxidant levels with all-cause mortality and coronary events in healthy middle-aged men from France and Northern Ireland in the PRIME study. *European Journal of Nutrition*. 2020. 60(5):2631–2641. <https://doi.org/10.1007/s00394-020-02455-2> PMID: 33355688
42. Clark DA, Coker R. Molecules in focus Transforming growth factor-beta (TGF-β). *The International Journal of Biochemistry & Cell Biology*. 1998; 30(3):293–298.
43. Massagué J. TGFβ signalling in context. *Nature Reviews Molecular Cell Biology*. 2012; 13(10):616–630. <https://doi.org/10.1038/nrm3434> PMID: 22992590
44. Derynck R, Zhang YE. Smad-dependent and Smad-independent pathways in TGF-β family signalling. *Nature*. 2013; 425:577–584.



45. Grainger DJ. Transforming Growth Factor  $\beta$  and Atherosclerosis: So Far, So Good for the Protective Cytokine Hypothesis. *Arteriosclerosis, Thrombosis, and Vascular Biology*. 2003; 24(3):399–404. <https://doi.org/10.1161/01.ATV.0000114567.76772.33> PMID: 14699019
46. Mallat Z, Tedgui A. The role of transforming growth factor beta in atherosclerosis: novel insights and future perspectives. *Current Opinion in Lipidology*. 2002; 13(5):523–529. <https://doi.org/10.1097/00041433-200210000-00008> PMID: 12352016
47. Gamble J, Vadas M. Endothelial cell adhesiveness for human T lymphocytes is inhibited by transforming growth factor-beta 1. *Journal of Immunology*. 1991; 146(4):1149–1154.
48. Gamble J, Vadas M. Endothelial adhesiveness for blood neutrophils is inhibited by transforming growth factor-beta. *Science*. 1988; 242(4875):97–99. <https://doi.org/10.1126/science.3175638> PMID: 3175638
49. Lutgens E, Gijbels M, Smook M, Heeringa P, Gotwals P, Koteliensky VE et al. Transforming Growth Factor- $\beta$  Mediates Balance Between Inflammation and Fibrosis During Plaque Progression. *Arteriosclerosis, Thrombosis, and Vascular Biology*. 2002; 22(6):975–982. <https://doi.org/10.1161/01.atv.0000019729.39500.2f> PMID: 12067907
50. Fleenor BS, Marshall KD, Durrant JR, Leisniewski LA, Seals OR. Arterial stiffening with ageing is associated with transforming growth factor- $\beta$ 1-related changes in adventitial collagen: reversal by aerobic exercise. *The Journal of Physiology*. 2010; 588(20):3971–3982. <https://doi.org/10.1113/jphysiol.2010.194753> PMID: 20807791
51. Chen P-Y, Qin L, Li G, Wang Z, Dahlman JE, Malagon-Lopez J et al. Endothelial TGF- $\beta$  signalling drives vascular inflammation and atherosclerosis. *Nature Metabolism*. 2019; 1(9):912–926. <https://doi.org/10.1038/s42255-019-0102-3> PMID: 31572976
52. Grainger DJ, Kemp PR, Metcalfe JC, Liu AC, Lawn RM, Williams NR et al. The serum concentration of active transforming growth factor- $\beta$  is severely depressed in advanced atherosclerosis. *Nature Medicine*. 1995; 1:74–79. <https://doi.org/10.1038/nm0195-74> PMID: 7584958
53. Felkin LE, Lara-Pezzi E, George R, Yacoub MH, Birks EJ, Barton PJR. Expression of Extracellular Matrix Genes During Myocardial Recovery From Heart Failure After Left Ventricular Assist Device Support. *The Journal of Heart and Lung Transplantation*. 2009; 28(2):117–122. <https://doi.org/10.1016/j.healun.2008.11.910> PMID: 19201335
54. Hein S, Arnon E, Kostin S, Schonburg M, Elsasser A, Polyakova V et al. Progression From Compensated Hypertrophy to Failure in the Pressure-Overloaded Human Heart. *Circulation*. 2003; 107(7):984–991. <https://doi.org/10.1161/01.cir.0000051865.66123.b7> PMID: 12600911
55. Cross DS, Ivacic LC, Stefanski EL, McCarty CA. Population based allele frequencies of disease associated polymorphisms in the Personalized Medicine Research Project. *BioMed Central Genetics*. 2010; 11:51. <https://doi.org/10.1186/1471-2156-11-51> PMID: 20565774
56. Grainger DJ, Heathcote K, Chiano M, Snieder H, Kemp PR, Metcalfe JC et al. Genetic control of the circulating concentration of transforming growth factor type beta1. *Human Molecular Genetics*. 1999; 8(1):93–97. <https://doi.org/10.1093/hmg/8.1.93> PMID: 9887336
57. Shah R, Hurley CK, Posch PE. A molecular mechanism for the differential regulation of TGF- $\beta$ 1 expression due to the common SNP -509C-T (c. -1347C &gt; T). *Human Genetics*. 2006; 120(4):461–469. <https://doi.org/10.1007/s00439-006-0194-1> PMID: 16896927
58. Du L, Gong T, Yao M, Dai H, Ren Hg, Wang H. Contribution of the polymorphism rs1800469 of transforming growth factor  $\beta$  in the development of myocardial infarction. *Medicine*. 2019; 98(26):1594. <https://doi.org/10.1097/MD.000000000015946> PMID: 31261499
59. Koch W, Hoppmann P, Mueller JC, Schomig A, Kastrati A. Association of Transforming Growth Factor- $\beta$ 1 Gene Polymorphisms With Myocardial Infarction in Patients With Angiographically Proven Coronary Heart Disease. *Arteriosclerosis, Thrombosis, and Vascular Biology*. 2006; 26(5):1114–1119. <https://doi.org/10.1161/01.ATV.0000217747.66517.11> PMID: 16543493
60. Sie MPS, Uitterlinden AG, Bos MJ, Arp PP, Breteler MMB, Koudstaal PJ et al. TGF- $\beta$ 1 Polymorphisms and Risk of Myocardial Infarction and Stroke: the Rotterdam Study. *Stroke*. 2006; 37(11):2667–2671. <https://doi.org/10.1161/01.STR.0000244779.30070.1a> PMID: 17023672
61. Wang X, Cheng S, Brophy VH, Erlich HA, Mannhalter C, Berger K et al. A Meta-Analysis of Candidate Gene Polymorphisms and Ischemic Stroke in 6 Study Populations. *Stroke*. 2009; 40(3):683–695. <https://doi.org/10.1161/STROKEAHA.108.524587> PMID: 19131662
62. Zhong M, Kawaguchi R, Kassai M, Sun H. Retina, Retinol, Retinal and the Natural History of Vitamin A as a Light Sensor. *Nutrients*. 2012; 4(12):2069–2096. <https://doi.org/10.3390/nu4122069> PMID: 23363998
63. Zile MH. Function of Vitamin A in Vertebrate Embryonic Development. *The Journal of Nutrition*. 2001; 131(3):705–708. <https://doi.org/10.1093/jn/131.3.705> PMID: 11238746

64. Balmer JE, Blomhoff R. Gene expression regulation by retinoic acid. *Journal of Lipid Research*. 2002; 43(11):1773–1808. <https://doi.org/10.1194/jlr.r100015-jlr200> PMID: 12401878
65. Weber D, Grune T. The contribution of  $\beta$ -carotene to vitamin A supply of humans. *Molecular Nutrition & Food Research*. 2012; 56(2):251–258. <https://doi.org/10.1002/mnfr.201100230> PMID: 21957049
66. Lietz G, Oxley A, Boesch-Saadatmandi C, Kobayashi D. Importance of  $\beta$ , $\beta$ -carotene 15,15'-monooxygenase 1 (BCMO1) and  $\beta$ , $\beta$ -carotene 9',10'-dioxygenase 2 (BCDO2) in nutrition and health. *Molecular Nutrition & Food Research*. 2012; 56(2):241–250.
67. Goodman DS, Huang HS, Shiratori T. Mechanism of the Biosynthesis of Vitamin A from  $\beta$ -Carotene. *Journal of Biological Chemistry*. 1966; 241(9):1929–1932. PMID: 5946623
68. Ferrucci L, Perry JRB, Matteini A, Perola M, Tanaka T, Silander K et al. Common Variation in the  $\beta$ -Carotene 15,15'-Monooxygenase 1 Gene Affects Circulating Levels of Carotenoids: A Genome-wide Association Study. *The American Journal of Human Genetics*. 2009; 84(2):123–133. <https://doi.org/10.1016/j.ajhg.2008.12.019> PMID: 19185284
69. Lietz G, Oxley A, Leung W, Hesketh J. Single Nucleotide Polymorphisms Upstream from the  $\beta$ -Carotene 15,15'-Monooxygenase Gene Influence Provitamin A Conversion Efficiency in Female Volunteers. *The Journal of Nutrition*. 2012; 142(1):161–165. <https://doi.org/10.3945/jn.111.140756> PMID: 22113863
70. Huang J, Weinstein SJ, Yu K, Mannisto S, Albanes D. Serum Beta Carotene and Overall and Cause-Specific Mortality. *Circulation Research*. 2018; 123(7):1339–1349.
71. Gey KF, Ducimetière P, Evans A, Amouyel P, Arveiler D, Ferrieres J et al. Low plasma retinol predicts coronary events in healthy middle-aged men: The PRIME Study. *Atherosclerosis*. 2010; 208:270–274. <https://doi.org/10.1016/j.atherosclerosis.2009.07.018> PMID: 19660753
72. Cai X, Lian F, Msc Y, Huang L, Xu L, Wu Y et al. Carotenoid metabolic (BCO1) polymorphisms and personal behaviors modify the risk of coronary atherosclerosis: a nested case-control study in Han Chinese with dyslipidaemia (2013–2016). *Asia Pacific Journal of Clinical Nutrition*. 2019; 28:192–202. [https://doi.org/10.6133/apjcn.201903\\_28\(1\).0025](https://doi.org/10.6133/apjcn.201903_28(1).0025) PMID: 30896431
73. Clifford AJ, Rincon G, Owens JE, Medrano JF, Moshfegh AJ, Baer DJ et al. Single nucleotide polymorphisms in CETP, SLC46A1, SLC19A1, CD36, BCMO1, APOA5, and ABCA1 are significant predictors of plasma HDL in healthy adults. *Lipids in Health and Disease*. 2013; 12:66. <https://doi.org/10.1186/1476-511X-12-66> PMID: 23656756
74. Cooney MT, Dudina A, de Bacquer D, Wilhelmsen L, Sans S, Menotti A et al. HDL cholesterol protects against cardiovascular disease in both genders, at all ages and at all levels of risk. *Atherosclerosis*. 2009; 206:611–616. <https://doi.org/10.1016/j.atherosclerosis.2009.02.041> PMID: 19375079
75. Voight BF, Peloso GM, Orho-Melander M, Frikke-Schmidt R, Barbalic M, Jensen MK et al. Plasma HDL cholesterol and risk of myocardial infarction: a mendelian randomisation study. *Lancet*. 2012; 380(9841):572–580. [https://doi.org/10.1016/S0140-6736\(12\)60312-2](https://doi.org/10.1016/S0140-6736(12)60312-2) PMID: 22607825
76. Yabuta S, Masaki M, Shidoji Y. Associations of Buccal Cell Telomere Length with Daily Intake of  $\beta$ -Carotene or  $\alpha$ -Tocopherol Are Dependent on Carotenoid Metabolism-related Gene Polymorphisms in Healthy Japanese Adults. *Journal of Nutrition, Health and Aging*. 2016; 20:267–274. <https://doi.org/10.1007/s12603-015-0577-x> PMID: 26892575
77. Bensi G, Rauegi G, Palla E, Carinci V, Buomasaa DT, Melli M. Human interleukin-1 beta gene. *Gene*. 1987; 52(1):95–101. [https://doi.org/10.1016/0378-1119\(87\)90398-2](https://doi.org/10.1016/0378-1119(87)90398-2) PMID: 2954882
78. Ren K, Torres R. Role of interleukin-1 $\beta$  during pain and inflammation. *Brain Research Reviews*. 2009; 60:57–64. <https://doi.org/10.1016/j.brainresrev.2008.12.020> PMID: 19166877
79. Sommer C, Kress M. Recent findings on how proinflammatory cytokines cause pain: peripheral mechanisms in inflammatory and neuropathic hyperalgesia. *Neuroscience Letters*. 2004; 361:184–187. <https://doi.org/10.1016/j.neulet.2003.12.007> PMID: 15135924
80. Cain BS, Meldrum DR, Dinarello CA, Meng X, Joo KS, Banerjee A et al. Tumor necrosis factor-alpha and interleukin-1 beta synergistically depress human myocardial function. *Critical Care Medicine*. 1999; 27(7):1309–1318. <https://doi.org/10.1097/00003246-199907000-00018> PMID: 10446825
81. Zienoldiny S, Ryberg D, Maggini V, Skaug V, Canzian F, Haugen A. Polymorphisms of the interleukin-1 gene are associated with increased risk of non-small cell lung cancer. *International Journal of Cancer*. 2004; 109(3):353–356. <https://doi.org/10.1002/ijc.11695> PMID: 14961572
82. Harrison P, Pointon JJ, Chapman K, Roddem A, Wordsworth BP. Interleukin-1 promoter region polymorphism role in rheumatoid arthritis: a meta-analysis of IL-1B-511A/G variant reveals association with rheumatoid arthritis. *Rheumatology*. 2008; 47(12):1768–1770. <https://doi.org/10.1093/rheumatology/ken374> PMID: 18838388
83. Vargas-Alarcón G, Cruz-López M, Valladares A, Alvarez-Leon E, Juarez-Cedillo T, Perez-Mendez O et al. The interleukin-1 $\beta$ -511 T>C (rs16944) gene polymorphism is associated with risk of developing

silent myocardial ischemia in diabetic patients. *Immunology Letters*. 2015; 168:7–12. <https://doi.org/10.1016/j.imlet.2015.08.005> PMID: 26300289

84. Jiménez-Sousa MÁ, Medrano LM, Liu P, Almansa R, Fernandez-Rodriguez A, Gomez-Sanchez E et al. IL-1B rs16944 polymorphism is related to septic shock and death. *European Journal of Clinical Investigation*. 2016; 47(1):53–62. <https://doi.org/10.1111/eci.12702> PMID: 27859227
85. Iacoviello L, di Castelnuovo A, Gattone M, Pezzini A, Assanelli D, Lorenzet R et al. Polymorphisms of the Interleukin-1 $\beta$  Gene Affect the Risk of Myocardial Infarction and Ischemic Stroke at Young Age and the Response of Mononuclear Cells to Stimulation In Vitro. *Arteriosclerosis, Thrombosis, and Vascular Biology*. 2005; 25:222–227. <https://doi.org/10.1161/01.ATV.0000150039.60906.02> PMID: 15539626
86. Beller J, Bauersachs J, Schäfer A, Schwettmann L, Heier M, Peters A et al. Diverging Trends in Age at First Myocardial Infarction: Evidence from Two German Population-Based Studies. *Scientific Reports*. 2020; 10:9610. <https://doi.org/10.1038/s41598-020-66291-4> PMID: 32541657