



**QUEEN'S
UNIVERSITY
BELFAST**

Impacts of climate change on global agri-food trade

Bozzola, M., Lamonaca, E., & Santeramo, F. G. (2023). Impacts of climate change on global agri-food trade. *Ecological Indicators*, 154, Article 110680. <https://doi.org/10.1016/j.ecolind.2023.110680>

Published in:
Ecological Indicators

Document Version:
Publisher's PDF, also known as Version of record

Queen's University Belfast - Research Portal:
[Link to publication record in Queen's University Belfast Research Portal](#)

Publisher rights

Copyright 2023 the authors.

This is an open access article published under a Creative Commons Attribution License (<https://creativecommons.org/licenses/by/4.0/>), which permits unrestricted use, distribution and reproduction in any medium, provided the author and source are cited.

General rights

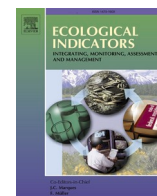
Copyright for the publications made accessible via the Queen's University Belfast Research Portal is retained by the author(s) and / or other copyright owners and it is a condition of accessing these publications that users recognise and abide by the legal requirements associated with these rights.

Take down policy

The Research Portal is Queen's institutional repository that provides access to Queen's research output. Every effort has been made to ensure that content in the Research Portal does not infringe any person's rights, or applicable UK laws. If you discover content in the Research Portal that you believe breaches copyright or violates any law, please contact openaccess@qub.ac.uk.

Open Access

This research has been made openly available by Queen's academics and its Open Research team. We would love to hear how access to this research benefits you. – Share your feedback with us: <http://go.qub.ac.uk/oa-feedback>



Impacts of climate change on global agri-food trade

Martina Bozzola^{a,b}, Emilia Lamonaca^c, Fabio Gaetano Santeramo^{c,d,*}

^a Queen's University, Belfast, UK

^b ZHAW (CH), Switzerland

^c University of Foggia, Italy

^d European University Institute, Italy

ARTICLE INFO

JEL classification:

F18
O13
O44
Q17
Q54

Keywords:

Climate normal
Climate heterogeneity
Export
Economic development

ABSTRACT

Climate change and trade are closely related. Climate may alter the comparative advantages across countries, which may in turn trigger changes in trade patterns. Trade itself may constitute an adaptation strategy, moving excesses of agri-food supply to regions with shortages, and this in turn may explain changes in land-use. We investigate these linkages, showing that the changes in climate affect countries' trade value and contribute to reshaping trade patterns. First, we quantify the long-term impacts of climate on the value of agri-food exports, implicitly considering the ability of countries to adapt, and show that higher marginal temperatures and rainfall levels tend to be beneficial for countries' exports. Following a gravity model approach, we then link the evolving trade patterns to climate change adaptation strategies. We find that the larger the difference in temperatures and rainfall levels between trading partners, the higher the value of bilateral exports. Furthermore, while developed and developing exporters are both sensitive to climate change and to cross-countries heterogeneity in climate, we found their responses to changes in climate to be quite diverse.

1. Introduction

The interest of policymakers and academics for climate change issues and trade dynamics, and their connections, is vivid and growing. The awareness that these two phenomena are closely related and have large impacts on the agri-food sector is increasingly common wisdom. Yet, understanding how climate change and trade are linked deserves deeper investigation at least for two reasons: the existing literature is relatively recent and not conclusive on how trade and climate change are related (e.g., Hsiang, 2016; Costinot et al., 2016; Janssens et al., 2020; Gouel and Laborde, 2021) and, even more important, understanding how the phenomena are related would help facing increasing challenges posed by climate change and planning adaptation and mitigation options (e.g., Burke and Emerick, 2016; Hochman and Zilberman, 2021; Shapiro, 2021), while feeding the world's growing population, which is expected to raise to almost 10 billion by 2050 (UNDESA, 2022).

By connecting economies, trade may be relevant for the adaptation to climate change-related challenges, such as the local climate becoming less suitable for crops traditionally produced and consumed, and for the reallocation of food from surplus to deficit regions, hence contributing to food security (FAO, 2017, 2018; Li et al., 2019).¹ For instance, under varying climatic conditions, a country may decide to import a crop whose yield has fallen, and to produce more and to export another crop whose yield has increased or remained constant (Reimer and Li, 2009, 2010; Costinot et al., 2016). In sum, trade may constitute a climate change adaptation strategy. In addition, trade itself is likely to be impacted by climate change (Hsiang, 2016). These impacts are expected to be particularly relevant for the agri-food sector, which is one of the most sensitive and vulnerable sectors to the climate change (e.g., Deschênes and Greenstone, 2007; Mendelsohn and Massetti, 2017).

We investigate the potential impacts of climate change on the agri-food trade. First, we focus on the impacts that changes in climate

* Corresponding author at: Via Napoli 25, 71121 Foggia, Italy.

E-mail address: fabio.santeramo@unifg.it (F.G. Santeramo).

¹ Feeding a growing global population in a changing climate presents a significant challenge to society (Challinor et al., 2014). World population and average income are rising and this, in turn, increases the demand for food. An increase in food production between 25 and 70% above 2014 levels will be required by 2050 to meet this growing demand and to prevent further food insecurity (Hunter et al., 2017).

normals have on the value of trade.² This part of the analysis builds upon cross-sectional studies of climate change, introduced by Mendelsohn et al. (1994) and extended to panel settings by Deschênes and Greenstone (2007), to examine the long-term impacts of climate on the value of trade at the country level, implicitly considering the ability of countries to adapt. The novelty here is that we move the focus from profits, one of the variables traditionally used in studies of climate change (e.g., Mendelsohn et al., 1994, 1996; Deschênes and Greenstone, 2007; Bozzola et al., 2018), to trade values so as to measure how the domestic trade patterns are affected by structural changes in climate. The rationale is simple: profits depend on countries' exports that are in turn affected by long-run changes in climate in the origin and/or destination regions (Dall'Erba et al., 2021). Second, aiming at a more holistic analysis of the impacts of climate change on global agri-food trade, we look at how the climate heterogeneity across trading partners impacts the value of bilateral trade. This second part of our analysis builds on the well-grounded strand of gravity-based research (e.g., Bergstrand, 1985; Eaton and Kortum, 2002), as the basis for our analysis on bilateral trade. In the gravity literature, this approach is traditionally used to quantify the impact of trade policies such as tariffs and non-tariff measures (e.g., Olper and Raimondi, 2008; Santeramo and Lamonaca, 2022a), or trade agreements (e.g., Heerman et al., 2015; Santeramo and Lamonaca, 2022b). Recently, the gravity approach has been used to investigate the nexus between trade and climate: Dall'Erba et al. (2021) assess the impact of weather conditions, specifically droughts, on interstate trade in the United States to mimic a free trade environment; Dallmann (2019) examines the effect of weather variations on bilateral trade flows worldwide but does not control for other determinant of bilateral trade such as trade barriers or market structure differences.

We build upon these approaches and introduce some novelties. First, we evaluate the role of long-term shifts in temperature or precipitation. Although previous studies consider past weather events (Dallmann, 2019; Dall'Erba et al., 2021), they miss the role of structural changes in climate as well as the future consequences of these climate trends. Second, we apply the gravity model to an international setting controlling for confounding factors, such as trade policies.

We indirectly capture the fact that climate change, by altering comparative advantages of sectors across countries, may trigger changes in trade patterns (Zimmermann et al., 2018). Starting from the consideration that changes in climate may induce changes in land use and production choices and, as a consequence, may alter the agri-food supplies (Reilly and Hohmann, 1993), our focus is on the "excess of supply" ("excess of demand") in exporting (importing) countries. Climate changes may affect countries' comparative advantages favouring a specialisation toward productions for which countries become more and more competitive. By altering the comparative advantages, climate change may reshape trade patterns allowing countries to exploit the beneficial opportunities (or to moderate the negative impacts) of climate change (Burke and Emerick, 2016). If changes in climate expand the export capacity of A country and the import demand of its trading partner, trade between them is likely to increase due to the changed climatic conditions. Differently, bilateral trade may reduce if, for instance, the changed climate conditions expand or shrink the export capacity of both countries.

For the reasons explained, we also investigate the impacts of climate change on the value of trade in agri-food products considering the level of economic development of exporting countries. Our empirical application considers a set of developed and developing economies covering two-third of global agri-food exports and located at different latitudes, in regions of the world characterised by different climate conditions.

² For the remainder of the paper, we refer to trade in agri-food products when we talk about "value of trade" with reference to our own empirical specifications, while the term "climate normals" (or climatologies) refer to long time averages (30-years) in climate variables (e.g., temperatures and precipitations) in a given location.

To the authors' knowledge, this is the first study that, using both a cross-sectional analysis of country-level value of exports and a panel regression of bilateral value of exports, investigates the role of *climate* (i.e., the weather conditions prevailing in a region over a long period) on trade values. Previous studies have focused on the impact that a country's *weather* in that year (i.e., its average temperature and precipitation) has on the annual growth rate of its exports (e.g., Jones and Olken, 2010) and on the effect of *weather variations* in the exporter and/or importer countries on bilateral trade flows (e.g., Dallmann, 2019). These are also needed analysis but there are important differences, because it is expected that long-run effects of climate change (when the adaptation may be fully adopted and thus implicitly captured) should be more stable than the short-run effects (when the adaptation is only partially adopted). One of the contributions of this paper is to show how trade capacities and trade patterns may have reflected the structural (i.e., long-run) climate changes that have occurred during the last few decades.

2. Current debate on climate change and international trade

Population and income growth, in low- and middle-income countries, is boosting agri-food demand and is hastening the demand for calories and dietary transition towards higher consumption of meat, fruit, and vegetables, relative to that of cereals (FAO, 2017; Gouel and Guimbard, 2019; Karimi Alavijeh et al., 2022). These trends are also fostering changes in land use and challenging the resilience of the agricultural system (e.g., Santeramo et al., 2021a; Zhang et al., 2021). The expansion of agriculture and the production of traded goods are important drivers of global land use change (Böhringer et al., 2021; WTO, 2022). Most countries trade land-demanding products (Meyfroidt and Lambin, 2009) and large agricultural exports often are associated with high deforestation rates (DeFries et al., 2010). As compared to developed economies, the use of agricultural land (panel A) is raising in developing countries (Fig. 1, panel A). Such raising trend is also observed for agricultural exports (Fig. 1, panel B). The changes in land use and agri-food trade do not necessarily imply that trade is the driver of land-use transitions (Meyfroidt et al., 2010), but calls for attention on the trade-climate nexus, as one of the drivers of changes in land use. This link is specifically investigated in our analysis.

The debate on the relation between climate change and international trade is also animated by findings showing that trade has a limited role in terms of adaptation to climate change (e.g., Costinot et al., 2016), and by contradicting conclusions that the link between trade and climate change adaptation is crucial (e.g., Janssens et al., 2020; Gouel and Laborde, 2021) and that trade plays an important role in distributing climate welfare impacts (Jones and Olken 2010).

The differences in impacts of climate change between countries with different levels of economic development are well documented (e.g., Mendelsohn et al., 2006; Dell et al. 2012; Global Commission on Adaptation, 2019). Developing countries are often located at warmer low latitudes whereas high-latitude countries are often developed economies (Zimmermann et al., 2018; IPCC 2019). In general, developing countries depend heavily on the agricultural sector, which is one of the sectors that is most susceptible to climate change (Mendelsohn, 2009). They may have less potential to adapt and thus may suffer the most from impacts of climate change (Reilly and Hohmann, 1993; Hertel and de Lima, 2020; Brenton et al., 2022). For instance, in regions closer to the equator, the yields of cereal crops are declining as a result of climate change (IPCC, 2019). Adaptation measures, such as the choice of planting dates to avoid high temperatures or dry periods of the year, may be insufficient in already warm developing countries³ where an

³ As an example, consider India: the area near to Delhi has a typical tropical climate with maximum temperature reaching up to 45 °C during the summer months of April, May and June (see Sahay, 2018). Such temperatures are already prohibitive for growing wheat, whose yield tend to be negatively impacted by temperatures higher than 30 °C (e.g., Zampieri et al., 2017).

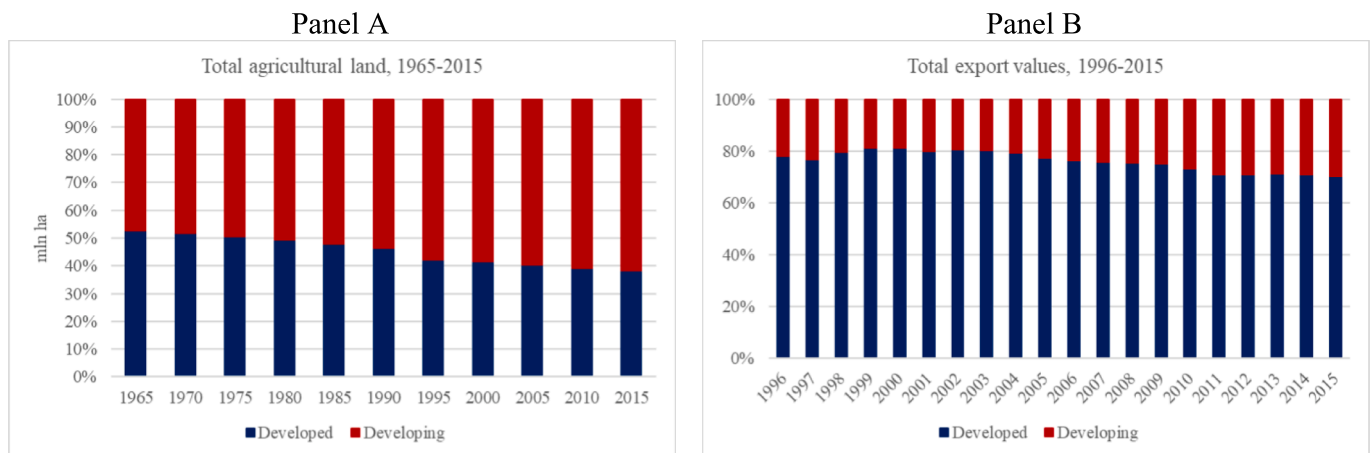


Fig. 1. Trends of land use (panel A) and agri-food trade (panel B). Source: own elaboration on data from FAOSTAT and UN Comtrade. Notes: Data includes countries in the sample described in section 3, divided according to the level of economic development.

increase in temperatures would increase the potential for drought stress (e.g., Brenton et al., 2022). They may also have lower capability to adapt to climate change due to infrastructure (e.g., roads, inland waterways and railway lines, storage and processing facilities) at higher risk of faster depreciation and damage (Koks et al., 2019; WTO, 2022), limited access to technology and weaker institutions (Acemoglu et al., 2002; Acemoglu and Dell, 2010; Guiso et al., 2015). For instance, supply chains that rely key infrastructure such as roads and ports can be disrupted by weather and climate extreme events (Attavanich et al., 2013; IPCC, 2022; WTO, 2022). Small Island developing nations or landlocked countries which trade through a limited number of ports and routes are especially vulnerable to impacts of climate change on transport infrastructure (WTO 2022).⁴ Moreover, less efficient processing, packaging, and storage facilities may increase costs (e.g., higher energy costs due to ventilation and temperature control mechanisms) and spoilage (e.g., more frequent bacterial foodborne diseases) (Brown et al., 2017).

Earlier studies by Reilly and Hohmann (1993) and Rosenzweig and Parry (1994) emphasise the role of international trade in the adjustment of the world food system to climate-induced changes in the agricultural production. The assumption is that, for open economies, climate change impacts on agriculture in any region cannot be considered in isolation from the rest of the world. More recent studies by Costinot et al. (2016) and Gouel and Laborde (2021) examine the role of trade in attenuating effects of climate change through new climate-induced pattern of comparative advantages. While Costinot et al. (2016) conclude that climate change impacts amount to a 0.26% reduction in global Gross Domestic Product (GDP) when trade and production patterns can adjust, Gouel and Laborde (2021) find larger welfare losses from climate change when adjustments in trade flows are constrained *versus* when they are not. Both studies by Costinot et al. (2016) and Gouel and Laborde (2021) investigate the contribution of adjustments through production and trade patterns to adaptation to climate change in agriculture, assuming that climate change may heterogeneously impact agricultural productivity both within and between countries. These heterogeneous impacts may alter countries' comparative advantages, because of changes in land use and production choices, and may consequently induce changes

⁴ Extreme weather events can affect key transport corridors and infrastructure, potentially disrupting regional and global trade network. According to WTO (2022) maritime transport which accounts for 80% of world trade by volume is particularly exposed to climate change. As an example the Paraná River transports 90% of Paraguay's international trade of agricultural goods, but recurrent droughts have in recent years frequently lowered water levels, diminishing the weight barges can carry, causing congestion and delays (WTO, 2022).

in international trade flows. The rationale is that, under climate change, regions with currently low temperatures may benefit from higher yields and improve their export capacity. In fact, a warmer climate allows these regions planting crops that could not grow under the current climate on existing fields and induces, as a result, changes in land use. For instance, with respect to the 30-years period 1961–1990, Russia became warmer in 1991–2020 (see figure A.1 in the Appendix A) and, according to the FAOSTAT statistics, its agricultural land increased by 4 million hectares over the same periods (i.e., from 551 to 555 million hectares). Differently, regions with currently high temperatures are exposed to the risk of a decrease in yields because of extreme temperatures and, as a consequence, to a reduction in their export capacity. Reimer and Li (2009, 2010) argue that climate change, by increasing the probability of extreme climate phenomena, may exacerbate yield variability and international trade favours the adaptation to yield variability through spatial arbitrage. In sum, the literature on the nexus between climate change and international trade suggests that long-run changes in climate (i.e., climate change)⁵ may have heterogeneous impacts across countries, and the adjustments of trade patterns may smooth the consequences of these climate-induced changes.

3. Conceptual framework and empirical strategy

The empirical analysis starts from the concept that climate change, by affecting climate conditions in the exporting and importing countries, may alter their comparative advantage and, as a result, their trade capacity (see figure B.1 of the Appendix B). We investigate these dynamics adapting the approach traditionally used in cross-sectional studies of climate change (e.g., Mendelsohn et al., 1994, 1996; Deschênes and Greenstone, 2007; Bozzola et al., 2018; Bareille and Chakir, 2023). However, climate conditions between the exporting and importing countries may differ and potentially induce different specialisations of

⁵ A related strand of empirical literature quantifies the effects of weather variations (i.e., short-run changes in climate) on international trade. Jones and Olken (2010) examine the impacts of temperature shocks on exports, concluding that higher temperatures have more substantial (detrimental) impacts on high-income countries, rather than on low-income ones. By examining the impacts of climate shocks on international trade in China, Li et al. (2015) compute high welfare losses induced by climate change. Dellmann (2019), investigates the effects of weather variations on bilateral trade and finds that the positive effects of temperature dominate. While short-run changes in climate may have relevant impacts on trade dynamics, this article focuses on the nexus between climate change and international trade and investigates the impacts induced by long-run changes in climate.

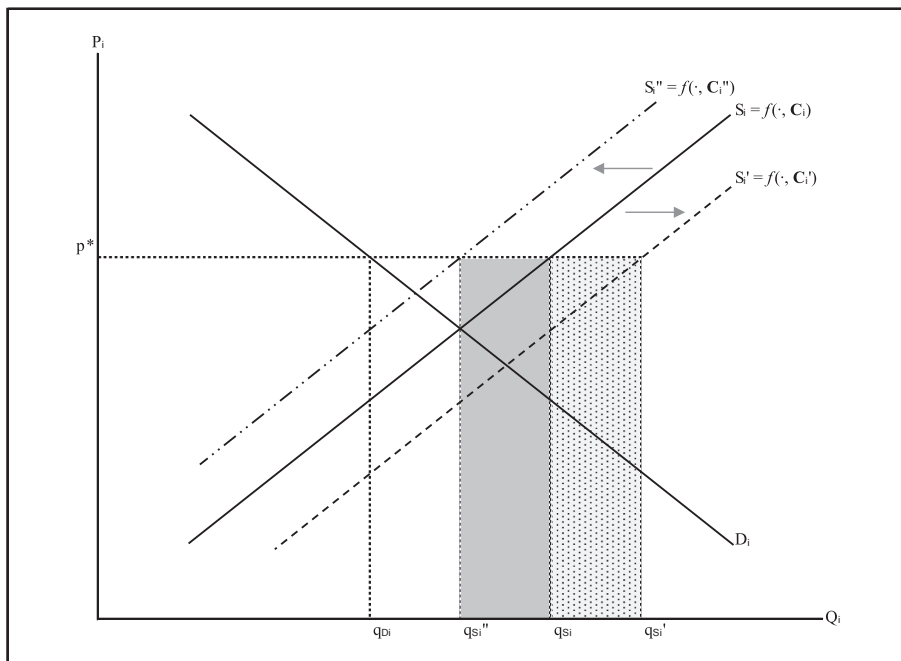


Fig. 2. Changes in country's value of agri-food trade due to climate change. Notes: All else equal, shifts in country's aggregate agri-food supply (S_i) depend on changes in country's climate (C_i). Given the exogenous market price (p^*) higher than domestic prices, $q_{D_i} - q_{S_i}$ is the baseline excess of supply, $(q_{S_i} - q_{S_i'})p^*$ is the increase in the value of exports associated with an expanded supply (S_i') (dotted area), $(q_{S_i} - q_{S_i'})p^*$ is the reduction in the value of exports associated with a shrunk supply (S_i') (grey area).

trading partners, with consequences on their bilateral trade relationships (see figure B.1 of the Appendix B). We capture these effects through a gravity-based analysis (e.g., Bergstrand, 1985; Eaton and Kortum, 2002; Dallmann, 2019; Dall'Erba et al., 2021).

3.1. Climate change impacts on country's agri-food trade value

We present a simple conceptual framework describing how shifts in the aggregate agri-food supply of countries due to changes in climate may alter their trade value in the agri-food sector. Climate is an exogenous factor typically affecting productivity (e.g., Mendelsohn et al., 1994, 1996; Knittel et al., 2020) and capable of altering comparative advantage, i.e., the relative ability of a country to produce a certain product at a lower cost than any other country, and as a consequence export (import) the excess of supply (demand) (French, 2017).⁶ Following Reimer and Li (2009, 2010), we assume that land is the principal factor of agricultural production and productivity (i.e., defined as output per area of land) shocks arise from the climate-induced randomness of agricultural production and from relatively permanent differences in climate across countries. The consequences of climate change may crucially depend on the ability of a country to change its trade levels (Costinot et al., 2016). Changes in land use and production choices are potential responses to the impacts of climate change (i.e., adaptation outcomes). For instance, a certain country (say Canada) may unlikely be a competitive exporter of a certain good (say grape) due to climate requirements for its production. However, warmer temperatures

⁶ As in Mendelsohn et al. (1994), we assume that climate affects, within each country, directly the productivity of different crops and indirectly the substitution of different inputs. As climate changes, economic agents (e.g. farmers) may even switch to different economic activities. This implies that relative autarky prices across sectors may also change. Accordingly, our framework considers implicitly adaptation across commodities within the same sector (e.g., across agri-food commodities) and also across different sectors (e.g., between the agri-food and the manufacturing sectors). This is in line with a growing body of evidence that indicates that climate change will affect manufacturing in addition to agriculture (e.g., Zhang et al., 2018).

due to long-run changes in climate may give an advantage in producing that good to the country, increasing its competitiveness. In order to capture these features of trade, our model links the value of aggregate agri-food exports with climate conditions. Let us assume a country i to be a small open economy and a net exporter (importer) for the agri-food sector. Given its aggregate agri-food demand and supply (D_i and S_i), the export (import) value of i (V_i) is a function of the exogenous market price (p^*) which depends on the conditions in the rest of the world, the known technology (z_i), the country's climate conditions (vector C_i), and a set of country-specific characteristics (vector X_i)⁷:

$$S_i - D_i = V_i = f(p^*, z_i, C_i, X_i, \bullet) \tag{1}$$

If p^* is higher (lower) than the domestic price, i is a net exporter (importer), thus $S_i - D_i > 0$ ($S_i - D_i < 0$); z_i is assumed to be constant in i (Mendelsohn et al., 1996); C_i is exogenous and reflects the long-run equilibria associated with the climate (Mendelsohn et al., 1994); X_i includes other relevant control factors at country level, such as geographic coordinates, development level, policy interventions.

The rationale behind equation (1) is that climate may affect the trade value of i . For simplicity, suppose that long-run changes in climate shift S_i but leave D_i unaltered. A warmer (cooler) climate may favour (inhibit) the production of certain goods (say tropical fruits), shifting S_i but leaving unaltered D_i . If world price, p^* , is higher (lower) than the domestic price, then the changes in climate expand S_i (say from S_i to S_i') and increase (reduce) the excess of supply (demand) (say from $q_{S_i} - q_{D_i}$ to $q_{S_i'} - q_{D_i}$), and the value of exports (imports) of i increases (decreases) by $(q_{S_i'} - q_{S_i})p^*$ (dotted area in Fig. 2); the opposite is true for a left-ward shift of the supply functions (grey area in Fig. 2). Climate change may determine changes in comparative advantages and result in increase or decrease of the trade values.

We build upon cross-sectional climate studies (e.g., Mendelsohn et al., 1994, 1996) to examine the long-term impacts of climate change on the agri-food sector, implicitly considering the ability of countries to

⁷ The subscript t for time varying variables is suppressed for ease of notation.

adapt to changes in climate.⁸ We use this approach to estimate how much climate explains observed cross-sectional variation of the value of countries' agri-food trade, controlling for confounding factors. One of the strengths of the method is its ability to measure the long run impacts of climate change taking into account (implicitly) the ability of each country to adapt. We estimate a log-linear specification⁹ of the model in equation (1):

$$V_{it} = \beta_r + \beta_i + C_i\gamma + X_i\delta + u_{it} \quad (2)$$

The term V_{it} is a vector of the log value of agri-food total exports of country i at time t , expressed in USD. This dependent variable allows us to capture the impact of climate variables on trade values. The region fixed effects¹⁰ (i.e., dummies equal to one if a country i belongs to a specific region, and zero otherwise), β_r , and time fixed effects (i.e., dummies taking the value one for each time t , and zero otherwise), β_t , control, respectively, for regional-level exogenous variables that we do not measure (Bozzola et al., 2018), such as similarities in climate conditions of neighbouring countries, and for exogenous technological progress (Kim and Moschini, 2018). The inclusion of spatial effects (i.e., region fixed effects), by controlling for some of the unobserved factors generating differences in trade across countries, also allows us to obtain consistent and unbiased parameter estimates in the presence of spatial autocorrelation (Chatzopoulos and Lippert, 2016).¹¹ The term C_i is a matrix of country-specific climate normals of temperature (T , expressed in °C) and precipitation (P , expressed in mm per year) and γ is the corresponding vector of regression coefficients. Consistent with other cross-sectional climate studies (e.g., Mendelsohn et al., 1994, 1996), we posit a quadratic relationship between the dependent variable and the climate normals, hence C_i also includes the squares of these variables (i.e., T^2 expressed in °C and P^2 expressed in mm per year). Such a non-linear model delivers a relationship that largely reflects long-run outcomes for temperature effects and that is a weighted average of long-run and short-run responses for precipitation effects (Méréd and Gammans, 2021). The specification provides a matrix of country-specific characteristics, X_i , and δ is the corresponding vector of regression coefficients. The matrix X_i includes countries' latitude and longitude (expressed in decimal degrees)¹² and a dummy indicating if i is a developed exporter to avoid bias upon the potential occurrence of the Yule-Simpson effect¹³ (Pearl, 2009). Additional variables, included as proxies of technology and trade policies, and to control for differences across product categories are added in matrix X_i in alternative regressions for robustness analyses¹⁴ (see section 3.3). A possible caveat, as in other econometric studies, concerns our inability to account for the positive effect of carbon

fertilisation due to changes in CO₂ concentrations, which are uniformly spread across the globe. The term u_{it} is a vector of random error terms which is assumed not to be correlated with climate. We rely on the pooled Ordinary Least Square (OLS) estimate of equation (2) to minimise the influence of random variation that could affect the coefficients in any one year.

Following the literature (e.g., Kurukulasuriya et al., 2011), we compute the percentage change in export values associated with a marginal increase in temperature and precipitation normals or climatologies (i.e., rolling 30-years averages) as follows:

$$\frac{\partial \hat{V}}{\partial T} \frac{1}{\hat{V}} = (\gamma_T + 2\gamma_{T^2} \bar{T}) * 100 \quad \text{and} \quad \frac{\partial \hat{V}}{\partial P} \frac{1}{\hat{V}} = (\gamma_P + 2\gamma_{P^2} \bar{P}) * 100 \quad (3)$$

where γ_T , γ_{T^2} , γ_P , γ_{P^2} are coefficients estimated for long-run mean temperature and precipitation and their squares. \bar{T} and \bar{P} are sample means of 30-years rolling average temperature (in °C) and precipitation (in mm per year).

3.2. Impacts of climate heterogeneity on bilateral trade

We wish to complement the analysis proposed in the previous subsection by investigating also more specific impacts on bilateral trade. Changes in climate may alter comparative advantages and trade values of traders,¹⁵ which may be either beneficial or detrimental for bilateral trade. If trading partners are characterised by different climatic conditions, this leaves room for opposite specialisations of the exporter and of the importer in producing different goods. For instance, suppose that changes in climate enlarge the exporter's supply, increasing the value of agri-food exports, and limit the importer's supply, boosting the value of agri-food imports: the result would be an expansion of bilateral trade flows due to the new comparative advantages induced by the changes in climate. In contrast, as suggested in Dallman (2019) and Heerman (2020), countries with similar climatic characteristics tend to specialise in similar agri-food productions and to compete. We investigate if larger climate heterogeneity among trading partners increases bilateral trade flows.

To clarify how climate heterogeneity between trading partners may induce changes in the value of bilateral agri-food trade, we introduce a baseline conceptual framework to justify the empirical specification. Let assume that i (exporting country) is engaged in bilateral trade with a partner j (importing country). The trade value of i is defined as in equation (1) and the trade value of j is described by $S_j - D_j = V_j = f(p^*, z_j, C_j, X_j)$, with S_j and D_j being the aggregate agri-food supply and demand of j . Countries differ in known technologies ($z_i \neq z_j$), climate conditions ($C_i \neq C_j$), and other specific characteristics ($X_i \neq X_j$).

Suppose that market price (p^*) higher than the domestic price in i , but lower than the domestic price in j , the excess of supply in i ($q_{D_i} - q_{S_i}$) matches the excess of demand in j ($q_{S_j} - q_{D_j}$) (Fig. 3). Assume that, all everything else equal, the long-run changes in climate conditions modify the composition of supply (leaving unaltered the demand) both in i and j : the trade value of i may increase or reduce¹⁶ depending on the difference of the climatic conditions with respect to those of the trading partner j (i.e., $C_i - C_j$, hereinafter referred to as climate heterogeneity between i and j). For instance, suppose that the climate change expands exporter's

⁸ In its traditional application, this cross-sectional approach (Mendelsohn et al., 1994) is a hedonic method that relies on a cross-sectional regression of farmland prices on fixed climate variables. Expected net revenues are also appropriate dependent variables often used in this stream of literature. We depart from this standard empirical application: our dependent variable is the value of total agri-food exports.

⁹ We rely on a log-linear model since trade values tend to be log-normally distributed (Head and Mayer, 2014).

¹⁰ Table A.2 in the Appendix A provides information about which region each country belongs to.

¹¹ The countries in our samples are aggregated in seven regions. Further details are provided in Appendix A.

¹² Countries coordinates are time-invariant control factors.

¹³ Also known as "reversal paradox", the Yule-Simpson effect is a phenomenon in which a certain relationship appears in subsamples of data but disappears or reverses when these subsamples are combined.

¹⁴ Additional control variables are the percentage of population with access to electricity, the percentage of rural population with access to electricity, and variables capturing trade policies that are the average level of tariffs (in percentage) and the presence of multilateral non-tariff measures (i.e., a dummy equal to one if the country i implements a multilateral non-tariff measure, and zero otherwise).

¹⁵ Changes in climate have an impact on countries' domestic agri-food market, leading to changes in the terms of trade. Consequently, the level of bilateral trade between any two countries will not only depend on how climatic factors affect domestic supply and demand, but also on how climatic factors affect supply and demand in the trading partner.

¹⁶ If changes in climate expand the export capacity of i and the import demand of j , trade between them is likely to increase due to the changed climatic conditions. Differently, bilateral trade may reduce if, for instance, the changed climate conditions expand or shrink the export capacity of both countries.

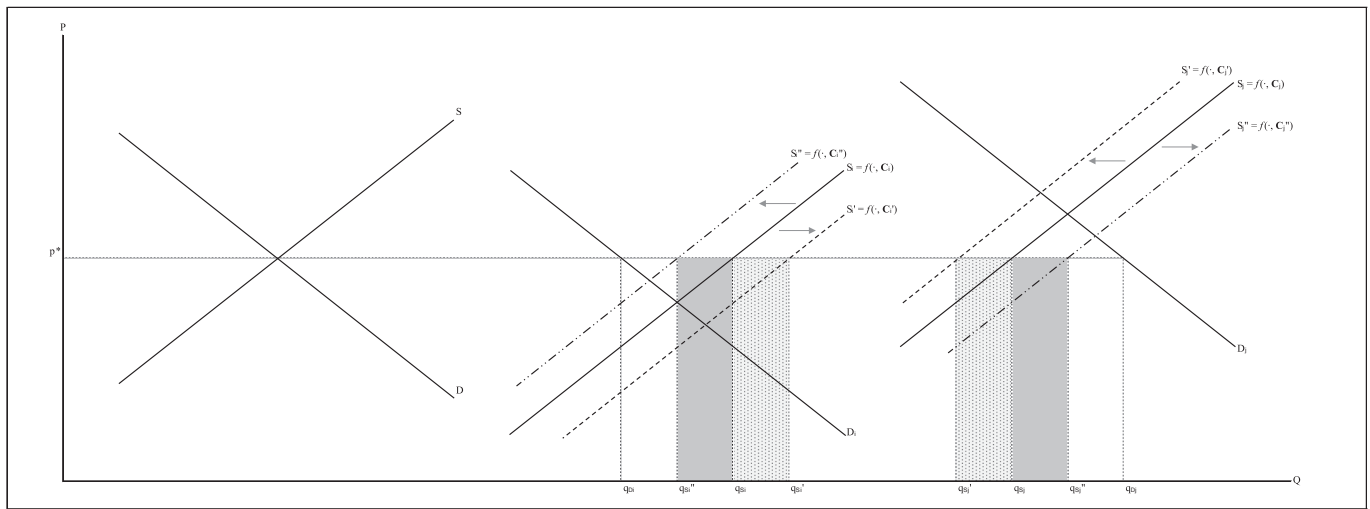


Fig. 3. Changes in the value of bilateral agri-food trade due to changes in climate. Notes: All else equal, shifts in aggregate agri-food supply of the exporter (S_i) and importer (S_j) depend on changes in countries' climate (C_i and C_j). Given the exogenous market price (p^*) higher than domestic prices in the exporting market and lower than domestic price in the importing market, $q_{D_i} - q_{S_i}$ is the baseline excess of supply of the exporter and $q_{S_j} - q_{D_j}$ is the baseline excess of demand of the importer, $(q_{S_i} - q_{S_i})p^*$ is the increase in the value of exports associated with an expanded supply of the exporter (S_i') and $(q_{S_j} - q_{S_j})p^*$ is the increase in the value of imports associated with a shrunk supply of the importer (S_j') (dotted areas), $(q_{S_i} - q_{S_i})p^*$ is the reduction in the value of exports associated with a shrunk supply of the exporter (S_i') and $(q_{S_j} - q_{S_j})p^*$ is the reduction in the value of imports associated with an expanded supply of the importer (S_j') (grey areas).

supply (say from S_i to S_i') so that the value of exports increases by $(q_{S_i} - q_{S_i})p^*$ and shrinks importer's supply (say from S_j to S_j') so that the value of imports increases by $(q_{S_j} - q_{S_j})p^*$ (dotted areas in Fig. 3). If different comparative advantages of i and j , due to climate change, allow compensation between the excess of supply in i and the excess of demand in j , bilateral trade may increase. Differently, if climate change shrinks i 's supply (say from S_i to S_i') decreasing by $(q_{S_i} - q_{S_i})p^*$ the value of exports and expands j 's supply (say from S_j to S_j') decreasing by $(q_{S_j} - q_{S_j})p^*$ the value of imports (grey areas in Fig. 3), bilateral trade is likely to shrink, due to changed climate conditions in i and j .

Following the above mentioned framework, the bilateral trade between i and j may be described as follows: $V_{ij} = f(p^*, z_i, z_j, C_i, C_j, X_i, X_j, \bullet)$, and it may be related to the standard gravity framework (e.g., Bergstrand, 1985; Eaton and Kortum, 2002) according to which bilateral trade is explained by the distance (e.g., geographical, cultural, other transaction costs) and by the differences in economic conditions (e.g., production, income). We assume that trade from i to j imposes iceberg trade costs $\tau_{ij} \geq 1$.¹⁷ Consistent with the theoretical gravity equation, bilateral trade, V_{ij} , is explained by the following structural gravity system¹⁸:

$$V_{ij} = \frac{V_i E_j}{\Pi_i P_j} \tau_{ij} \quad (4)$$

The size term of equation (4), $V_i E_j$, includes the value of output in i (V_i)¹⁹ and the total expenditure of j (E_j): large importing economies tend to import more from all sources; large producing economies tend to

export more to all destinations; trading partners with a similar size tend to share larger trade flows. Π_i and P_j are multilateral resistances, as defined in Anderson and van Wincoop (2003) and proxy the competitiveness of i and j . Π_i and P_j depend on relative price indexes and on market clearing conditions. The term τ_{ij} includes proxies and determinants of transaction costs between i and j . These structural terms (Π_i and P_j) and the trade distance between i and j (τ_{ij}) form together the trade cost term of equation (4), i.e., $\frac{\tau_{ij}}{\Pi_i P_j}$.

Empirically, the structural form of the gravity model in equation (4) can be expressed as an exponential function:

$$V_{ijt} = e^{\{\beta_{it} + \beta_{jt} + C_{ijt} \lambda + W_{ijt} \mu\}} \epsilon_{ijt} \quad (5)$$

The term V_{ijt} is a vector collecting the value of exports of country i to country j at time t , expressed in USD. The term β_{it} is a vector of time-varying exporter fixed effects which control for outward multilateral resistances and countries' output shares at time t ; the term β_{jt} is a vector of time-varying importer fixed effects which control for inward multilateral resistances and countries' total expenditure at time t . The use of β_{it} and β_{jt} (i.e., dummies taking the value one for each country i or j at a specific time t , and zero otherwise) allows us to control for observable and unobservable country-specific characteristics that vary over time (Yotov et al., 2016). The vector of country-pair fixed effects (i.e., dummies equal to one for each combination of i and j , and zero otherwise), β_{ij} , absorbs all bilateral time-invariant determinants of trade distance (e.g., geographic distance, common language, contiguity) without precluding the estimation of the effects of time-varying bilateral factors (Egger and Nigai, 2015). The terms C_{ijt} and W_{ijt} include time-varying control variables. Matrix C_{ijt} , includes long-run absolute differences in mean temperature ($T_{it} - T_{jt}$, expressed in °C) and precipitation ($P_{it} - P_{jt}$, expressed in mm per year) between i and j at time t able to determine countries' output shares (i.e., V_i), and the vector λ includes the corresponding regression coefficients. The variable $T_{it} - T_{jt}$ ($P_{it} - P_{jt}$) explains how a higher temperature (precipitation) in exporting than in importing countries affects bilateral trade. Recall that the output share of i (a proxy of agricultural productivity, V_i) is defined as in equation (1), thus is a function of the climate conditions that may differ from the climate conditions of the trading partner j . Changes in climate

¹⁷ Iceberg trade costs are additional costs i faces to sell one unit of its production in j (Melitz, 2003). As in Gouel and Laborde (2021), we neglect domestic trade costs and assume that all producers in a country receive the same price.

¹⁸ The subscript t for time varying variables is suppressed for ease of notation.

¹⁹ The term V_i should be equal to the total expenditure on i 's outputs in all countries in the world, including i itself ($V_i = \sum_j V_{ij} v_j$).

conditions may have differential impacts on land use and production choices in the importing and exporting countries. These are only a few examples of potential channels through which changes in climate may impact agri-food markets of trading partners. This heterogeneity in climate impacts ($C_i - C_j$) may correlate with the bilateral trade flows. The matrix W_{ijt} includes the determinants of the transaction costs between i and j (i.e., bilateral tariff levels in percentage and dummies that control for the presence of non-tariff measures and regional trade agreements²⁰); μ is the corresponding vector of regression coefficients. To test the robustness of the estimations, we also specify alternative models where matrix W_{ijt} includes the percentage of the population with access to electricity and the percentage of rural population with access to electricity. These variables are added as proxies for the economic development of i and j .

A challenge in the estimation of gravity-type models is the existence of heteroskedasticity and of zero trade flows which may cause inefficient and inconsistent estimates, thus undermining the validity of the inference. To overcome concerns related to heteroskedasticity, we follow the approach suggested by [Silva and Tenreyro \(2006\)](#) and use the Poisson Pseudo-Maximum-Likelihood (PPML) estimator. This estimator is robust to heteroskedastic errors and provides a natural way to deal with zeros in trade data. The use of the PPML estimator allows us to estimate the model in equation (5) in levels with a multiplicative error term (ε_{ijt}) and to assume proportionality between the conditional variance and conditional mean.

Finally, we translate the structural gravity estimates from the model in equation (5) into trade volume effects (TVE). To do this step, we follow the approach developed by [Yotov et al. \(2016\)](#). For continuous variables, such as climate variables,²¹ the estimated coefficient is the elasticity of the value of trade flows with respect to an increase in the long-run absolute differences in mean temperature and precipitation. The TVE, expressed in percentage, is computed as follows: $TVE = \hat{\lambda}_w * 100$.²²

4. Data description

We compiled a rich dataset of historical annual data on trade flows (from 1996 to 2015) and on temperature and precipitation (from 1961 to 2015)²³ for twenty countries.²⁴ The timeframe of the empirical analysis is the period between 1996 and 2015. The start date of the panel is conditioned to the availability of data on trade policies, used as control factors in the empirical analysis (see [section 4.3](#)); the end date of the panel depends on the update of climate and trade data at the time of the study planning.²⁵ Together these economies account in total for 57% of

²⁰ The use of country-pair fixed effects allows us to account for the unobservable linkages between the endogenous trade policy covariates and the error term, solving for the problem of endogeneity of trade policy variables ([Baier and Bergstrand, 2007](#)).

²¹ Absolute climate differences are expressed in log.

²² Differently, for the dummy variables (e.g., presence of non-tariff measures, presence of regional trade agreements), the trade volume effect is calculated in percentage terms: $TVE_{dummy} = (e^{\hat{\mu}} - 1) * 100$, where $\hat{\mu}$ is the estimate of the coefficient on the indicator variable of interest.

²³ The longer time period used for climate data allows to build climate normal or climatologies (i.e., 30-years averages) of temperatures and precipitations. Climate normals are based on 30-years rolling averages, for the 30 years preceding the year the trade data refer to.

²⁴ The selected countries are Argentina, Australia, Brazil, Canada, China, France, Germany, India, Indonesia, Israel, Italy, Jordan, Morocco, New Zealand, Peru, Russian Federation, South Africa, Spain, the United Kingdom, the United States of America. Table A.2 in the Appendix A provides detailed information for each country in the sample.

²⁵ Thanks to a recent update of trade and climate data, we extend the timeframe of the analysis until 2021 as a sensitivity analysis. Details are provided in the Appendix F.

global agri-food exports in 2015.²⁶ The share of each country exports with respect to global exports in the agri-food sector is always lower than 10%. Our sample ensures representativeness in term of income group (developed and developing countries)²⁷ and geographical location (low-latitude and high-latitude regions). Countries are grouped as belonging to northern or southern hemisphere, based on the distribution of the majority of land respectively above or below the Equator: 65% of countries are located in northern hemisphere.

4.1. Trade data

We compile data on countries' total agri-food exports to the rest of world, and data on bilateral agri-food exports for each country-pairs in the sample from the UN Comtrade database. Trade data are aggregated at the one-digit level of the classification by Broad Economic Categories (BEC) and consider the category 'Food and beverages' (BEC 1996: 01). We also use trade data aggregated at the 2-digit level of the Harmonised System (HS) for robustness analysis: we consider exports of 24 agri-food sectors (both primary products and value added products).

Trade data for the selected countries over the period between 1996 and 2015 exhibit fractions of zeros and missing values. Country-pairs that do not trade with each other account in our dataset for 5.21%, of which only one tenth are zeros and the remaining are missing values. Missing values in total exports of countries account for 3.75%. A detailed analysis of zero trade flows shows that zeros in the sample are likely to be structural zeros (i.e., trade expected to be low), whereas missing trade values are likely to be associated with data recording issue ([Head and Mayer, 2014](#)). The presence of zero trade flows in the sample calls for the need of adjusting trade variables to accommodate zeros. To capture economically significant changes in trade, we replace zeros with the value of exports observed in the first year available.²⁸

Distinguishing between developed and developing exporters in our sample, [Table 1](#) and [Fig. 4](#) provide summary statistics for trade variables and show trends in total and bilateral exports overtime.

The value of total exports of selected countries is 20.27 million USD on average. Although developed countries represent less than the half of exporters in the sample, they show higher export values (32.03 million USD of exports to the world) as compared to developing countries (10.65 million USD of exports to the world). Similarly, most of value in the food and beverage sector, traded bilaterally, originates in developed countries: they account for 846 million USD of bilateral exports (as compared to 0.23 million USD of bilateral exports originating in developing countries), with growth rate of exports about twice larger than developing countries ([Table 1](#), [Fig. 4](#)).

4.2. 4.2 Climate data

Historical climate data are compiled from the Climatic Research Unit (CRU) of the University of East Anglia ([Harris et al., 2014](#)). This dataset provides observational and quality-controlled temperature and rainfall values from thousands of weather stations worldwide. The CRU datasets are widely accepted as reference datasets in climate research ([World](#)

²⁶ The share of countries exports with respect to global exports in the agri-food sector is in Appendix A.

²⁷ We use the most recent country classification produced by the United Nation (2020) to associate each country to a group or the other. The list of countries by group is presented in Appendix A: 45% of the exporters in our sample are developed countries, 55% are developing countries.

²⁸ This accommodation strategy is required for the cross-sectional analysis of climate change impacts on country's agri-food trade value (see equation (2), although not strictly necessary for the analysis of impacts of climate heterogeneity on bilateral trade based on the estimation of the model in equation (5) through the PPML. More details and robustness checks are provided in Appendix C.

Table 1
Averages and standard deviations for trade data.

Trade (bln USD)	All	Developed	Developing
Total exports	20.27 ±(20.90)	32.03 ±(21.80)	10.65 ±(14.17)
Bilateral exports	0.51 ±(1.55)	0.85 ±(2.08)	0.23 ±(0.80)

Notes: Standard deviation in parentheses. Trade data aggregated at one-digit level of the classification by Broad Economic Categories (BEC) and consider 'Food and beverages' (BEC 1996: 01).

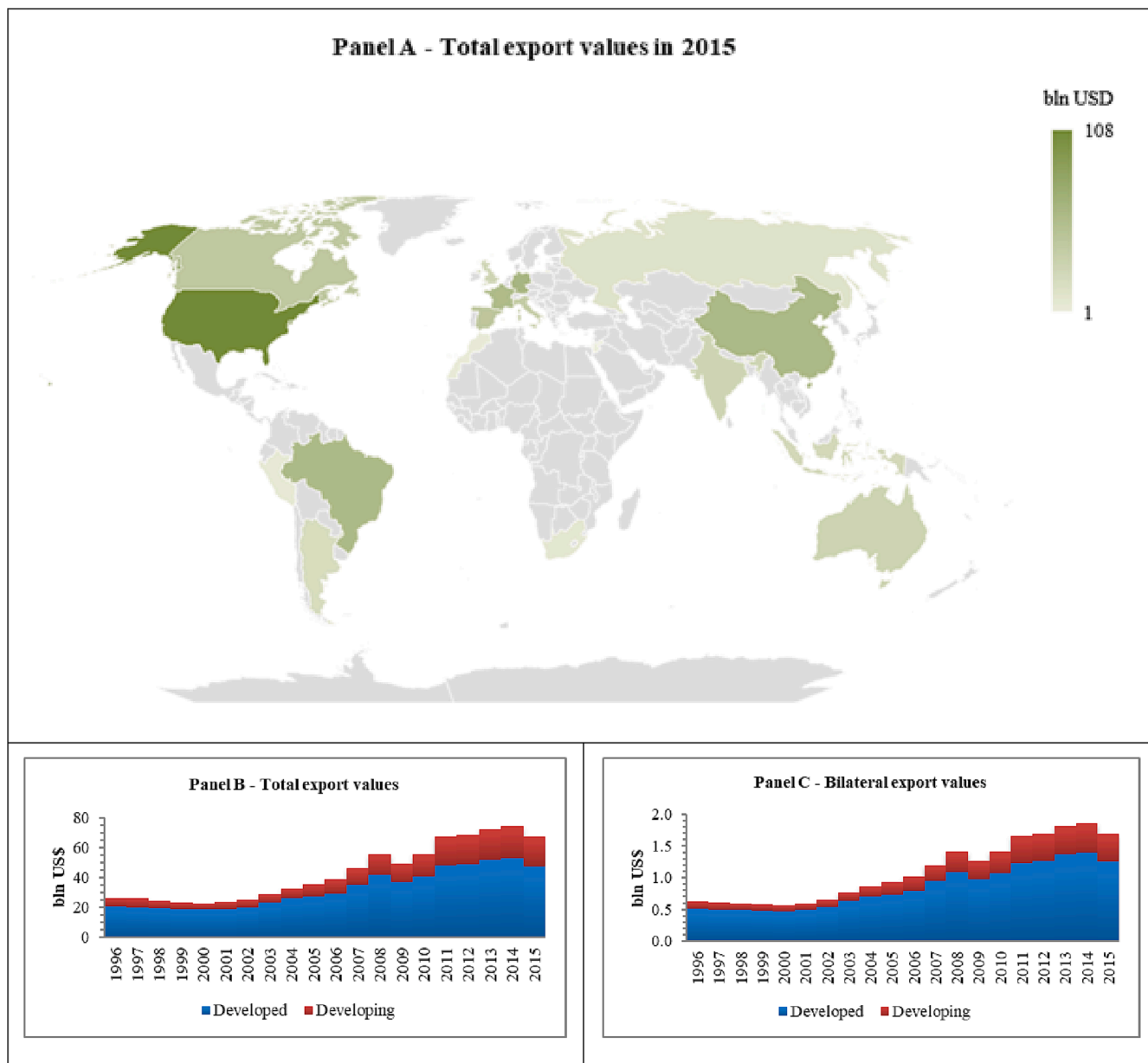


Fig. 4. Summary statistics: total and bilateral export values. Source: own elaboration on data from UN Comtrade. Notes: Trade data aggregated at one-digit level of the classification by Broad Economic Categories (BEC) and consider 'Food and beverages' (BEC 1996: 01). Exports from developing countries stacked over exports from developed countries in panels B and C. Total export values of developed countries are higher than total export values of developing countries (panels B and C). The growth rate of bilateral exports from developed countries is about twice larger than the growth rate of bilateral exports of developing countries (panel C).

Table 2

Averages and standard deviations for climatic variables.

Variable	Unit of measure	All	Developed	Developing
Temperatures	°C	13.57 ±(8.79)	9.65 ±(6.99)	16.78 ±(8.83)
Absolute difference in temperatures	°C	10.15 ±(7.71)	9.78 ±(7.27)	10.45 ±(8.04)
Precipitations	mm	73.38 ±(53.81)	70.95 ±(31.93)	75.36 ±(66.58)
Absolute difference in precipitations	mm	57.91 ±(52.21)	48.04 ±(42.49)	65.98 ±(57.75)

Notes: Standard deviation in parentheses. Figures for absolute differences in temperatures and precipitations are the average of the year-on-year differences.

Bank, 2018). Observed data are presented at a spatial resolution of 0.5° latitude by 0.5° longitude grid (50 km by 50 km) over all land domains and aggregated at the national level for each variable. They consist of one annual mean value for temperature and one annual cumulative value for precipitation, established over the respective time windows. The temporal and spatial resolution of the dataset is summarised in Table C.4 of the Appendix C.

Annual climatologies of temperature and precipitations are constructed using these historical weather data.²⁹ For each climate variable (i.e., temperature and precipitation), we built climatologies (or climate normals) as 30-year average of a weather variable for a given year. For instance, temperature normal (or precipitation normal) in 1996 is the average of annual temperatures (precipitations) of the interval 1966–1996; in 1997 the interval is 1967–1997; in 1998 the interval is 1968–1998; and so forth. Climatologies are derived from climate observations (i.e., absolute temperature and precipitation data) captured by weather stations.

The climate conditions affect productivity (i.e., defined as output per area of land) of both the exporters and the importers. Long-run changes in the climate conditions may determine changes in land use and production choices. A simple pairwise correlation between average changes in traders' agricultural land and climate normals or climatologies, both temperatures and precipitations suggests a potential link between climate change and land used for agricultural activities. This evidence is in line with the land statistics and indicators produced by the FAOSTAT for the period 2000–2020 that document a reduction of agricultural land associated with a decrease in the area of permanent meadows and pastures (-203 million ha) larger than the increase in cropland area (over 69 million ha) driven by trends in area of permanent crops (e.g., oil palm, cocoa and coffee, olives, orchards).

Climatologies and differences in climatologies between exporter and importers are reported in Table 2 and Fig. 5; details are also provided according to the level of economic development of exporters. The annual 30-years average temperature in the exporting countries is 13.6 °C (Table 2). Annual average temperatures are about 7 °C higher for developing than for developed exporters, reflecting the fact that developing countries are mostly located to lower latitudes (Fig. 5, panel A). Annual average temperatures in both developed and developing countries have increased in the past 20 years, with the difference between developed and developing exporters remaining rather constant over years (Fig. 5, panel C). The annual 30-years average precipitation of exporters is 73.4 mm (Table 2). The annual level of precipitations is about 4 mm lower in developed than in developing exporters (Fig. 5, panel D). Changes in temperature normals over the 30-years periods 1961–1990 and 1991–2020 are in Table A.1 in the Appendix A.

These statistics indicate a general tendency of the developed countries that, as also observed in our sample, tend to have a colder climate with respect to the developing countries. It should be kept in mind, however, that the strength of seasonality varies significantly across the globe, with seasons being more homogenous around the Equator.

4.3. Other control factors

In the empirical application we account for other sources of heterogeneity across countries, which in turn may drive trade patterns. The inclusions of these variables reduce, to some extent, endogeneity concerns stemming from the omitted variables bias. Typical sources of heterogeneity are the geographical and economic preconditions of the affected country. We control for time-invariant characteristics, such as latitude and longitude, and for proxies of development, such as countries' access to electricity. The percentage of population with access to electricity and the percentage of rural population with access to electricity are retrieved for the analysed timeframe from the World Development Indicators database of the World Bank.

Another set of relevant covariates includes trade policy indicators, which are a source of transaction costs (Beghin and Schweizer, 2021). We compile annual data on number of multilateral and bilateral non-tariff measures implemented on agri-food products³⁰ from the UNCTAD's global database on non-tariff measures, which provides information on official measures implemented at country and product level. Information about the number of non-tariff measures is available at the HS 6-digit level since 1996; in order to facilitate the match between trade and non-tariff measures data, we aggregate the information on non-tariff measures at the one-digit level of the BEC classification. We control for average bilateral tariffs on agri-food products (aggregated at the BEC level), downloaded from the World Bank's World Integrated Trade Solution (WITS) database, and for the presence of Regional Trade Agreements (RTAs) between country-pairs, an information retrieved from the database of the *Centre d'Etudes Prospectives et d'Informations Internationales* (CEPII).

5. Results and discussion

5.1. Results of the model of climate change impacts

We regress the value of countries' total exports on climate to estimate the best-value function across different countries. The regression results presented in Table 3 are from the quadratic model presented in section 2.1 (equation (2)), which includes the measures of climate: i.e., the annual average temperature and precipitation normals of the exporting countries and their squared values. Most of the climate coefficients are highly significant. The climate coefficients of the squared terms are also significant (at the 1% level), implying that the climate effects on the value of total export tend to be nonlinear, as shown in Fig. 6. The squared term of temperature is positive indicating that the value of trade displays a convex response to temperature normals. That is, the value of trade increases after a cut-off point (i.e., 5–6 °C) and a marginal change in temperature climatologies in the exporting country after that threshold would increase the value of total exports (Fig. 6, panel A). Differently, the positive first-degree and negative second-degree terms for precipitation indicate a concave response of exports' value to precipitation normals. Notably, there is an optimal level of

²⁹ The high correlation between one month and the next discourages the use every month of climate in the regression analysis.

³⁰ Multilateral non-tariff measures are implemented by a country against all its trading partners, bilateral non-tariff measures are country-pair specific (Santeramo and Lamonaca, 2019).

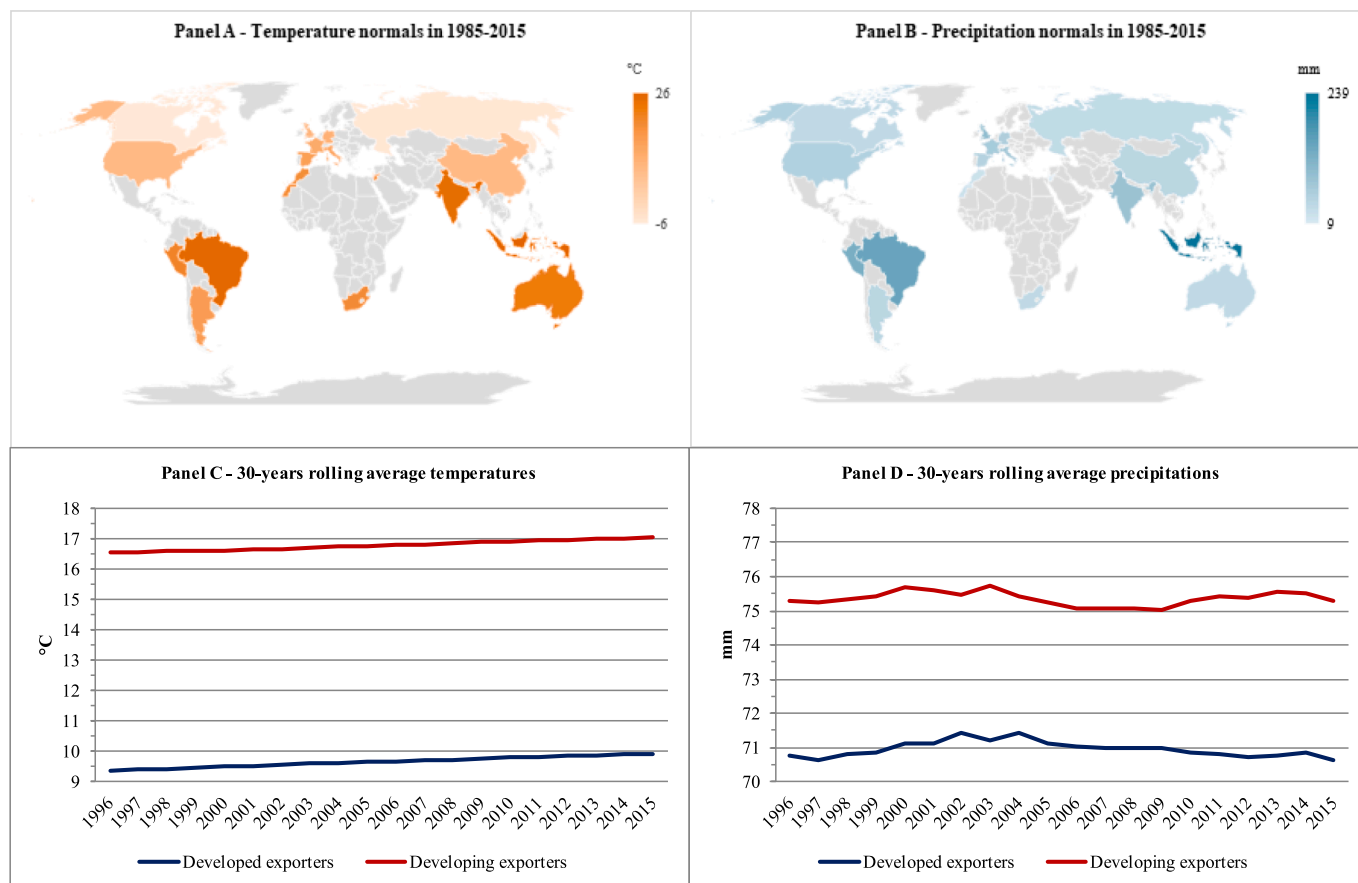


Fig. 5. Summary statistics: 30-years average annual temperatures and precipitations. Source: own elaboration on data from Climatic Research Unit of University of East Anglia (Harris et al., 2014). Notes: Rolling 30-years average annual temperatures and precipitation by exporter observed in 2015 (panels A and B). Rolling 30-years average annual temperatures and precipitation over exporters and years (panels C and D). Developed countries tend to have a colder (panels A and C) and drier (panels B and D) climate as compared to developing countries.

Table 3
Effects of climate change on countries' export values.

	Temperature		Precipitation
γ_T	-0.09680*** (0.02121)	γ_P	0.07398*** (0.00845)
γ_{T^2}	0.00795*** (0.00117)	γ_{P^2}	-0.00039*** (0.00004)

Notes: Pooled OLS estimates of the model in equation (2) and coefficients explicated in equation (3) (observations = 400; $R^2 = 0.883$). The dependent variable is the log value of total exports in food and beverage sector (BEC). Annual temperature of exporter is in degrees Celsius and annual precipitation of exporter is in units of mm per year. The specification includes a constant term, time and region fixed effects, latitude and longitude of the exporter, a dummy discriminating between developed and developing exporters. Robust standard errors are in parentheses.

*** Significant at the 1 percent level.

precipitation in the exporting country (i.e., 95–100 mm per year). The value of agri-food exports increases at a declining rate up to this cut-off point, after which it decreases (Fig. 6, panel B).

The impact of climate, measured as average marginal effects (Table 4),³¹ suggests that higher temperatures and rainfall levels in exporting countries favour exports.³² A 1 °C increase (decrease) in annual temperature increases (decreases) export values by 11.91%

³¹ The mean marginal impacts associated with a 1 mm increase in the rainfall levels are reported in table D.1 of the Appendix D.

³² The results are robust to specifications that control for proxies of technology adoption and policy interventions in the exporting countries (table D.2 of the Appendix D).

(+2.41 billion USD on average).³³ Increases (decreases) in precipitation

³³ The increase in export values for a 1 °C increase in temperature is to be interpreted as the effect, *ceteris paribus*, of climate change on trade. Such an effect is easily achievable slightly changing the composition of the production. This may occur, for instance, if changes in climate move the specialisation of country from less to more valued products (e.g., from almonds to grapes over global exports account respectively to 1,600 million and 9,600 million USD in 2021 according to the FAOSTAT data). For instance, European countries, are benefitting of better growing season temperatures to produce (and consequently sell) high valued products, such as fruits. For instance, data from FAOSTAT shown that, from 2011 to 2021, the produced quantity and the export value of grapes increased respectively by 9% and 7% in Italy and even by 157% and 46% in Netherland.

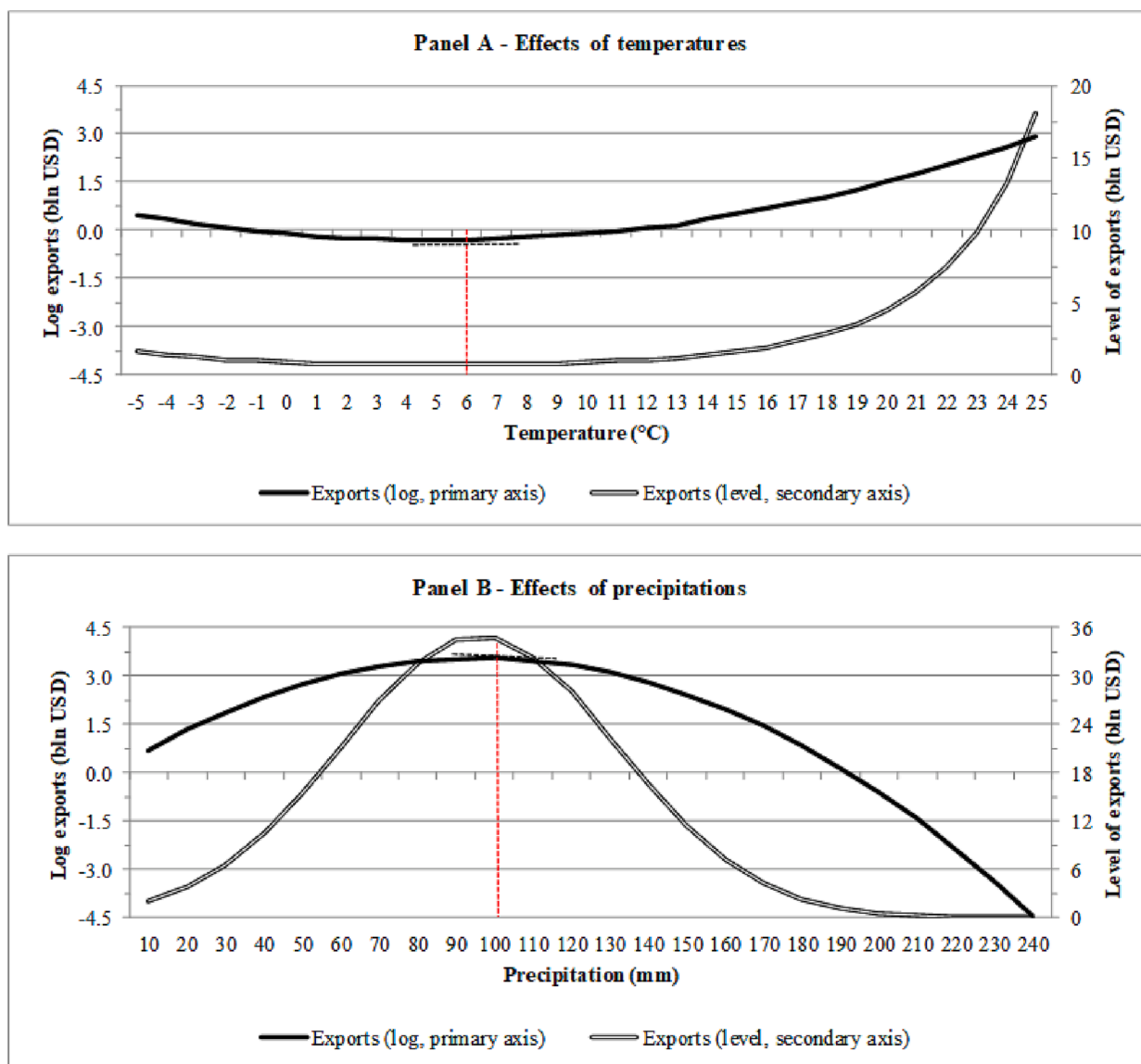


Fig. 6. Effects of climate normals on exports and turning points. Notes: The dependent variable is the value of total exports (both log and level) in food and beverage sector (BEC). Annual temperature of exporter is in degrees Celsius and annual precipitation of exporter is in units of mm per year. Turning points are 5–6 °C for temperatures of exporter and 95–100 mm for precipitations of exporter.

Table 4
Marginal impact of climate and change in countries' export values.

	All		Developed		Developing	
	Marginal impact (%)	Change in average exports (bln USD)	Marginal impact (%)	Change in average exports (bln USD)	Marginal impact (%)	Change in average exports (bln USD)
Temperature (+1 °C)	11.91	2.41	5.68	1.82	17.01	1.81
Precipitation (+5 mm)	[9.59; 14.22]	1.77	[4.75; 6.60]	3.09	[13.29; 20.73]	0.85
	[6.40; 11.05]		[7.15; 12.2]		[5.80; 10.15]	

Notes: Marginal impacts are significant at the 1% level and obtained applying equation (3) on coefficients of variables in level and squared reported in Table 3, evaluated at average temperature and precipitation of all, developed and developing exporters (see Table 2); 95% confidence intervals are in brackets. Change in exports consider average exports of all, developed and developing exporters (see Table 1).

have also positive (negative) effects: a 5 mm increase in rainfall levels increases export values by 8.73% (+1.77 billion USD on average). The positive correlations between the value of agri-food exports and both temperature and precipitation are indicative of the potential

specialisation of trading partners in the production of certain goods. These positive impacts suggest the dependence of countries on trade, both in selling the excess of production in which they are specialised and in buying goods that they do not produce due to a missing specialisation.

We run a set of robustness checks using more disaggregated trade data to address the concern that primary production is expected to be more sensitivity to value added products. We consider exports of 24 agri-food sectors (both primary products and value-added products) aggregated at the 2-digit level of the Harmonised System (HS). The results, reported in tables D.3 and D.4 of the Appendix D, confirm main results.

Results are robust to sensitivity analyses on subsamples of exporters with different levels of economic development.³⁴ The impacts of climate are evaluated at average temperature and precipitation normals of developed (i.e., 9.65 °C, 70.95 mm) and developing (i.e., 16.78 °C, 75.36 mm) exporters (Table 4). While the marginal impacts of change in annual precipitations (say + 5 mm) in developed and developing countries are similar in magnitude (+9.66% and +7.96%, respectively), the effects of increases in temperature are about 11% higher than in developing countries. This may be because agri-food products exported from developing countries are generally better suited to warmer climates. This result supports the discussion in Gouel and Laborde (2021) who state that most of net-exporters of agricultural produce, such as most of the developing countries exporters in our sample, may benefit from climate change. According to the authors, this finding applies even to the countries suffering from productivity losses, due to the burden of the adjustments to climate change shifts to consuming countries through international prices. Another important factor to note is that, although Russia has a colder average temperature (i.e., -5.83 °C) than most of the other exporting countries in our sample (with the exception of Canada, i.e., -6.47 °C),³⁵ the country is not classified by the UN as developed one (United Nation, 2020). Apart from Russia and Canada, the average temperatures of the countries in our sample are higher than the turning point (i.e., 6.1 °C, Fig. 6, panel A). Conversely, the average annual rainfall quantity is for the majority of countries below the turning point (i.e., 98.85 mm, Fig. 6, panel B). That is, the majority of countries in our sample would benefit, keeping every other control factor constant, from a marginal increase in both temperature and precipitation normals. A few countries, with annual average rainfall above 98.85 mm, may have not benefitted from increases in annual precipitation: India, the United Kingdom, Peru, New Zealand, Brazil, and Indonesia.

In monetary terms, while the impact of higher temperatures is almost the same for developed and developing exporters (i.e., +1.8 billion USD on average for each additional °C), greater rainfall levels are more pro-trade for developed (i.e., +3.09 billion USD for a 5 mm increase) than for developing countries (i.e., +0.85 billion USD for a 5 mm increase).

These results pertain to the impact of climate change on the value of agri-food export. The estimated coefficients implicitly account for climate change adaptation measures undertaken within each country. These comprise a variety of decisions that farmers and other agents in the agri-food sector customarily make in response to changing economic and environmental conditions. They include, for example, switching to new crops production or even land conversion to very different productive uses such as the conversion of farmland to manufacturing plants, retirement homes, etc. (Mendelsohn et al., 1994). Our results capture the long-run effects of climate change (with a full adaptation implicitly captured), thus the estimates should be considered as upper-bounds with respects to those obtained through *weather* variations, which proxy the short-run effects (with limited adaptation) (Ortiz-Bobea, 2019). In the next section we look, more specifically, into how the value of bilateral exports is influenced by pair differences in climate between country pairs.

5.2. Results of the model of climate heterogeneity

In this second part of our analysis, we further investigate the impacts of climate change on trade in the agri-food sector, by looking at how pair differences in climate, here referred to as *climate heterogeneity*, influence the value of bilateral exports. All the gravity coefficients estimated for annual differences in temperatures and precipitations between trading partners are significant, evidence of a clear relationship between bilateral trade and country-pair differences in climate (Table 5).

Our results suggest that, controlling for several confounding factors, the larger the differences in temperatures and rainfall levels between trading partners, the higher the value of bilateral exports.³⁶ The value of bilateral exports increases by 38.07% (+0.19 billion USD on average) for a 1 °C increase in differences in temperatures, and by 82.12% (+0.42 billion USD on average) for a 5 mm increase in differences in rainfall levels (Table 6).³⁷ The greater (lower) the specialisation of a trading partner exposed to high (low) levels of rainfall in the production of crops growing in a moist environment, the higher its ability to export (dependency on imports). Our conclusions support those provided by Dallmann (2019) who finds that higher differences in temperatures and precipitations between the exporting and importing countries are pro-trade. For each additional °C difference in the temperatures between trading partners, the author finds that bilateral trade increases by 2.8%, whereas we report a much larger effect. These differences are partially explained by the different nature of the two studies: Dallmann (2019) refers to short-run changes in climate, while our analysis focuses on long-run differences in climate. As a result, our findings may be interpreted as long-run trade adjustments due to countries specialisation. As suggested by Gouel and Laborde (2021, p. 24), “*trade plays a strong role in balancing the new domestic supply and demand schedules*” and may induce a reallocation of productions among countries.

The analyses on subsamples of exporters with different levels of economic development show heterogeneous responses. Higher differences in annual temperatures (say + 1 °C) are beneficial for developed exporters, whose bilateral export values increase by 49.86% (+0.42 billion USD on average), but detrimental for developing exporters that observe a 44.29% reduction in the value of bilateral exports (-0.10 billion USD on average). The effects estimated at the bilateral level are implicitly affected by mechanisms of changes in the extensive margin of trade (i.e., changes in trade routes, such as the opening of new bilateral relationships or the closing of old bilateral relationships) and of trade diversion (i.e., redirection of trade flows from one partner to the other). Higher annual differences in rainfall levels (say + 5 mm) are especially beneficial for developing exporters, whose bilateral export values increase by 84.75% on average (as compared to + 37.87% in bilateral export values of developed exporters), although the gain in monetary terms is comparable for developing (+0.20 billion USD) and developed (+0.32 billion USD) exporters. This is mostly due to marked differences in the magnitude of bilateral exports whose value, on average, is more than three times larger for developed (i.e., 0.85 billion USD) than for developing (i.e., 0.23 billion USD) countries.

Our results are consistent with findings of Dell et al. (2012) who conclude on substantial heterogeneity of climate impacts between developed and developing countries. They demonstrate that the net effect of a 1 °C rise in temperature decreases growth rates in developing countries by 1.39%. The large difference between the effect estimated in their study and in our analysis (i.e., -1.39% versus -44.29%) may be due to the diverse focus of the analyses: they examine the impact of temperature shocks (i.e., short-run effect of climate) on the economic

³⁴ The regression results are reported in the Appendix D (tables D.5 and D.6).

³⁵ For more details see the Appendix A. In a sensitivity analysis, we estimate the model in equation (2) excluding Russia and Canada from the sample: main results are confirmed.

³⁶ The results are robust to specifications that control for proxies of technology adoption in the exporting and importing countries. The results of the sensitivity analysis are in table E.1 of the Appendix E.

³⁷ The trade volume effect associated with a 1 mm increase in the rainfall levels are reported in table E.2 of the Appendix E.

Table 5
Effects of differences in long-run climate on bilateral exports.

Variables	All	Developed	Developing
Difference in temperatures	0.381*** (0.052)	0.499*** (0.048)	-0.443*** (0.129)
Difference in precipitations	0.164*** (0.059)	0.076** (0.034)	0.170*** (0.033)

Notes: PPML estimates of the model in equation (5). The dependent variable is the value of bilateral exports in food and beverage sector (BEC). Differences in annual temperatures between the exporter and importer (log of absolute values) are in degrees Celsius; differences in annual precipitations between the exporter and importer (log of absolute values) are in units of mm per year. All specifications include a constant term, exporter-time, importer-time and country-pair fixed effects, level of tariffs (log), non-tariff measures (dummy), regional trade agreements (dummy). In the specification *All*, an additional control is a dummy discriminating between developed and developing exporters. *All*: observations = 7,580; $R^2 = 0.995$. *Developed*: observations = 3,420; $R^2 = 0.997$. *Developing*: observations = 4,160; $R^2 = 0.987$. Robust standard errors are in parentheses.

*** Significant at the 1 percent level. ** Significant at the 5 percent level.

Table 6
Trade volume effect of climate heterogeneity and change in bilateral exports.

	All		Developed		Developing	
	Trade volume effect (%)	Change in avg. exports (bln USD)	Trade volume effect (%)	Change in avg. exports (bln USD)	Trade volume effect (%)	Change in avg. exports (bln USD)
Difference in temperature (+1 °C)	38.07%	0.19	49.86%	0.42	-44.29%	-0.10
Difference in precipitation (+5 mm)	82.12%	0.42	37.87%	0.32	84.75%	0.20

Notes: Trade volume effect obtained from coefficients in Table 5, evaluated at average differences in temperature and precipitation (Table 2). Change in exports consider average bilateral exports of all, developed and developing exporters (Table 1).

growth (i.e., countries' total GDP), whereas we focus on the long-run effects of climate on trade in the agri-food sector. As argued by Jones and Olken (2010), by connecting countries, trade may transfer geographically limited climate effects on a global scale. They analyse the effects of climate shocks (similar to Dell et al., 2012) on export activities (similar to our analysis). They find that higher temperatures in developing countries lead to large, negative impacts on the growth of their exports (between -2.0% and -5.7%) and conclude that the negative impacts are substantial for agricultural products. Again, differences in the estimated effects may be due to a different focus of the analysis: all the economic activities in Jones and Olken (2010) and the agri-food sector in our analysis.

Our results assume a particular relevance considering that developing countries tend to have warmer temperatures and economic growth mostly based on agricultural activities. This reasoning may explain why developing exporters tend to be hardly affected by differences in climate.

5.3. Discussion and implications

A large strand of literature has modelled the implications of climate change for domestic markets (e.g., Mendelsohn and Massetti, 2017) and the role of international trade as a climate change adaptation strategy (e.g., Costinot et al., 2016; Gouel and Laborde, 2021). Another emergent strand of economic literature is quantifying the impacts of weather variations on international trade (e.g., Jones and Olken, 2010; Dallmann, 2019; Dall'Erba et al., 2021).³⁸ The aim of this article has been to provide a more holistic view of the impacts of climate change on agri-food sector bridging these literatures, to understand of how long-run changes in climate impact countries' trade values as well as bilateral trade patterns in the agri-food sector. By deepening on the trade-climate nexus we feed the extant debate with a new potential channel to understand how climate change may influence land use.

Overall, our analysis suggests that higher temperatures, and larger differences in temperatures or precipitations are beneficial for trade.

These findings reinforce the evidence provided by the recent literature and indicate that (i) the agricultural exports increase with (long-run) raises in temperature (e.g., Dallmann, 2019) and that (ii) the role of trade in fostering adaptation to climate change is likely to be crucial (Gouel and Laborde, 2021). Our findings are also coherent with the studies that have explicitly taken adaptation into account and allows us to conclude that relatively small and positive long-run effects due to the climate change that may be assessed through a cross-sectional approach are internally consistent with negative and large, short-run effects due to the weather shocks, as assessed through a panel approach (Ortiz-Bobea, 2019). However, climate impacts are likely to vary across countries with different levels of economic development, also due to heterogeneity in climate and trade levels between them. For instance, the marginal impact of climate is greater for developing exporters, but changes in export values and in bilateral exports is less pronounced than developed exporters. Moreover, larger differences in temperatures are beneficial for developed but not for developing exporters. As also shown in Jones and Olken (2010), climate change increases welfare in developed countries. Marked impacts of climate on international trade point out the potential of climate change: by lowering prices and increasing quantities of exported products, welfare of countries may take advantage from new dynamics in climate trends.

In this article, we analysed aggregate impacts on trade value in agri-food products, and we leave to future research a more specific analysis of intra-country variability of climatic conditions, which is more relevant in some of the countries in our sample than others.

Climate change will not only impact long term averages and precipitations, but also trigger more frequent and severe weather extremes. Our approach captures long-run effects of climate change, but it does not account for the cost of adaptation and extreme weather scenarios. Hence the findings cannot rule out sizable nor catastrophic damages on countries' export value under extreme climate change and weather shocks. Future research should complement our analysis by looking in more details at the impact of weather shocks on trade. Another complementary area of research relates to the role of trade in promoting or hindering climate change mitigation efforts. However, these efforts are left to future work.

³⁸ For a review see Santeramo et al. (2021b).

6. Conclusions

We asked what the impacts of climate change on the value of agri-food trade are. Taking implicitly into account climate change adaptation, we examined the long-term impacts of climate on the value of countries' exports. Findings revealed that, at the margins, higher temperatures and rainfall levels in the exporting countries are beneficial for their exports, strengthening evidence from previous studies (e.g., Janssens et al., 2020; Gouel and Laborde, 2021). The marginal impacts of changes in temperatures are higher in developing countries, but the gain in monetary terms associated with greater rainfall levels is higher for developed countries.

We complemented this analysis by investigating how climate heterogeneity between trading partners impacts bilateral trade relationships. The empirical analysis for this second part is based on the Gravity model of trade, and showed that bilateral trade grows as the climate heterogeneity between trading partners increases. The larger the heterogeneity in temperatures and rainfall levels, the higher the value of bilateral exports. This evidence complements the findings of Dallmann (2019) on the short-run impacts of weather heterogeneity on bilateral trade. Developed and developing exporters are both sensitive to climate differences but have diverse responses. Higher differences in temperatures between trading partners are beneficial for developed exporters but detrimental for developing exporters; larger differences in rainfall levels are especially beneficial for developing exporters, although the gain in monetary terms is almost comparable between developing and developed exporters.

Declaration of Competing Interest

The authors declare the following financial interests/personal relationships which may be considered as potential competing interests: Emilia Lamonaca reports financial support, article publishing charges, and travel were provided by AXA Research Fund. Fabio Santeramo reports financial support, article publishing charges, and travel were provided by European Commission.

Data availability

I will share data, by mean of a public (open access) repository, and code upon acceptance

Acknowledgment

The authors gratefully acknowledge support from the Marie Skłodowska-Curie Individual Fellowship (ID 101031139) and the AXA Research Fund (ID 5257). The authors thank Christophe Gouel, Kari E.R. Heerman, Ralph Ossa, Robert Mendelsohn and the participant at the 2019 IATRC Symposium and Annual Meeting, the 171st and the 174th EAAE Seminars, the 9th AIEAA Conference, the 2020 IATRC Annual Meeting, the European Trade Study Group, the Food System Geography, Policy & Economics (FRIES) Seminar at ETH Zurich, the 9th IAERE Annual Conference, and the seminar audiences at the University of Florence, the University of Saskatchewan, the University of Arkansas, University of Milan, University of Bern for their valuable comments and suggestions on earlier drafts.

Declaration

Senior authorship not assigned: the article has been thought, discussed, and written by the three authors and it is the result of their common commitment.

Appendix A. Supplementary data

Supplementary data to this article can be found online at <https://doi.org/10.1016/j.ecolind.2023.110680>.

References

- Acemoglu, D., Dell, M., 2010. Productivity differences between and within countries. *Am. Econ. J. Macroecon.* 2 (1), 169–188.
- Acemoglu, D., Johnson, S., Robinson, J.A., 2002. Reversal of Fortune: Geography and Institutions in the Making of the Modern World Income Distribution. *Q. J. Econ.* 117 (4), 1231–1294.
- Anderson, J.E., Van Wincoop, E., 2003. Gravity with gravitas: A solution to the border puzzle. *Am. Econ. Rev.* 93 (1), 170–192.
- Attavanich, W., McCarl, B.A., Ahmedov, Z., Fuller, S.W., Vedenov, D.V., 2013. Effects of climate change on US grain transport. *Nat. Clim. Chang.* 3 (7), 638–643.
- Baier, S.L., Bergstrand, J.H., 2007. Do Free Trade Agreements Actually Increase Members' International Trade? *J. Int. Econ.* 71 (1), 72–95.
- Bareille, F., Chakir, R., 2023. The impact of climate change on agriculture: A repeat-Ricardian analysis. *J. Environ. Econ. Manag.* 119, 102822.
- Beghin, J.C., Schweizer, H., 2021. Agricultural Trade Costs. *Appl. Econ. Perspect. Policy* 43 (2), 500–530.
- Bergstrand, J.H., 1985. The gravity equation in international trade: some microeconomic foundations and empirical evidence. *Rev. Econ. Stat.* 67 (3), 474–481.
- Böhringer, C., Peterson, S., Rutherford, T.F., Schneider, J., Winkler, M., 2021. Climate policies after paris: Pledge, trade and recycle: Insights from the 36th energy modeling forum study (emf36). *Energy Econ.* 103, 105471.
- Bozzola, M., Massetti, E., Mendelsohn, R., Capitanio, F., 2018. A Ricardian analysis of the impact of climate change on Italian agriculture. *Eur. Rev. Agric. Econ.* 45 (1), 57–79.
- Brenton, P., Chemutai, V., Pangestu, M., 2022. Trade and food security in a climate change-impacted world. *Agric. Econ.* 53 (4), 580–591.
- Brown, M.E., Carr, E.R., Grace, K.L., Wiebe, K., Funk, C.C., Attavanich, W., Backlund, P., Bujar, L., 2017. Do markets and trade help or hurt the global food system adapt to climate change? *Food Policy* 68, 154–159.
- Burke, M., Emerick, K., 2016. Adaptation to climate change: Evidence from US agriculture. *Am. Econ. J. Econ. Pol.* 8 (3), 106–140.
- Challinor, A.J., Watson, J., Lobell, D.B., Howden, S.M., Smith, D.R., Chhetri, N., 2014. A meta-analysis of crop yield under climate change and adaptation. *Nat. Clim. Chang.* 4 (4), 287–291.
- Chatzopoulos, T., Lippert, C., 2016. Endogenous farm-type selection, endogenous irrigation, and spatial effects in Ricardian models of climate change. *Eur. Rev. Agric. Econ.* 43 (2), 217–235.
- Costinot, A., Donaldson, D., Smith, C., 2016. Evolving comparative advantage and the impact of climate change in agricultural markets: Evidence from 1.7 million fields around the world. *J. Polit. Econ.* 124 (1), 205–248.
- Dall'Erba, S., Chen, Z., Nava, N.J., 2021. U.S. Interstate Trade Will Mitigate the Negative Impact of Climate Change on Crop Profit. *Am. J. Agric. Econ.* 103 (5), 1720–1741.
- Dallmann, I., 2019. Weather variations and international trade. *Environ. Resour. Econ.* 72 (1), 155–206.
- DeFries, R.S., Rudel, T., Uriarte, M., Hansen, M., 2010. Deforestation driven by urban population growth and agricultural trade in the twenty-first century. *Nat. Geosci.* 3 (3), 178–181.
- Dell, M., Jones, B.F., Olken, B.A., 2012. Temperature shocks and economic growth: Evidence from the last half century. *Am. Econ. J. Macroecon.* 4 (3), 66–95.
- Deschênes, O., Greenstone, M., 2007. The Economic Impacts of Climate Change: Evidence from Agricultural Output and Random Fluctuations in Weather. *Am. Econ. Rev.* 97 (1), 354–385.
- Eaton, J., Kortum, S., 2002. Technology, geography, and trade. *Econometrica* 70 (5), 1741–1779.
- Egger, P.H., Nigai, S., 2015. Structural gravity with dummies only: Constrained ANOVA-type estimation of gravity models. *J. Int. Econ.* 97 (1), 86–99.
- FAO, 2017. The future of food and agriculture –Trends and challenges. FAO, Rome.
- French, S., 2017. Revealed comparative advantage: What is it good for? *J. Int. Econ.* 106, 83–103.
- Global Commission on Adaptation, 2019. Adapt now: A Global Call for Leadership on Climate Resilience. Global Center on Adaptation and World Resources Institute.
- Gouel, C., Guimbard, H., 2019. Nutrition transition and the structure of global food demand. *Am. J. Agric. Econ.* 101 (2), 383–403.
- Gouel, C., Laborde, D., 2021. The crucial role of domestic and international market-mediated adaptation to climate change. *J. Environ. Econ. Manag.* 106, 102408.
- Guiso, L., Sapienza P., Zingales, L., 2015. Corporate Culture, Societal Culture, and Institutions *American Economic Review: Papers & Proceedings* 105(5), 336–339.
- Harris, I.P.D.J., Jones, P.D., Osborn, T.J., Lister, D.H., 2014. Updated high-resolution grids of monthly climatic observations—the CRU TS3. 10 Dataset. *Int. J. Climatol.* 34 (3), 623–642.
- Head, K., Mayer, T., 2014. Gravity equations: Workhorse, toolkit, and cookbook. In: Head, K., Mayer, T. (Eds.), *Handbook of International Economics*, Vol. 4. Elsevier, pp. 131–195.
- Heerman, K.E.R., 2020. Technology, ecology and agricultural trade. *J. Int. Econ.* 123, 103280.

- Heerman, K.E., Arita, S., Gopinath, M., 2015. Asia-Pacific integration with China versus the United States: examining trade patterns under heterogeneous agricultural sectors. *Am. J. Agric. Econ.* 97 (5), 1324–1344.
- Hertel, T.W., de Lima, C.Z., 2020. Climate impacts on agriculture: Searching for keys under the streetlight. *Food Policy* 95, 101954.
- Hochman, G., Zilberman, D., 2021. Optimal environmental taxation in response to an environmentally-unfriendly political challenger. *J. Environ. Econ. Manag.* 106, 102407.
- Hsiang, S., 2016. Climate econometrics. *Ann. Rev. Resour. Econ.* 8 (1), 43–75.
- Hunter, M.C., Smith, R.G., Schipanski, M.E., Atwood, L.W., Mortensen, D.A., 2017. Agriculture in 2050: Recalibrating targets for sustainable intensification. *Bioscience* 67 (4), 386–391.
- IPCC, 2019. Climate change and land: An IPCC special report on climate change, desertification, land degradation, sustainable land management, food security, and greenhouse gas fluxes in terrestrial ecosystems. Intergovernmental Panel on. *Clim. Change*.
- IPCC, 2022. Summary for Policymakers [H.-O. Pörtner, D.C. Roberts, E.S. Poloczanska, K. Mintenbeck, M. Tignor, A. Alegría, M. Craig, S. Langsdorf, S. Lösschke, V. Möller, A. Okem (eds.)]. In: *Climate Change 2022: Impacts, Adaptation and Vulnerability. Contribution of Working Group II to the Sixth Assessment Report of the Intergovernmental Panel on Climate Change* [H.-O. Pörtner, D.C. Roberts, M. Tignor, E.S. Poloczanska, K. Mintenbeck, A. Alegría, M. Craig, S. Langsdorf, S. Lösschke, V. Möller, A. Okem, B. Rama (eds.)]. Cambridge University Press, Cambridge, UK and New York, NY, USA, pp. 3–33, doi:10.1017/9781009325844.001.
- Janssens, C., Havlík, P., Krisztin, T., Baker, J., Frank, S., Hasegawa, T., Leclère, D., Ohrel, S., Ragnauth, S., Schmid, E., Valin, H., Van Lipzig, N., Maertens, M., 2020. Global hunger and climate change adaptation through international trade. *Nat. Clim. Chang.* 10 (9), 829–835.
- Jones, B.F., Olken, B.A., 2010. Climate shocks and exports. *The American Economic Review*, 100(2), 454–59.
- Karimi Alavijeh, N., Salehnia, N., Salehnia, N., Koengkan, M., 2022. The effects of agricultural development on CO2 emissions: empirical evidence from the most populous developing countries. *Environment, Development and Sustainability*, 1–21.
- Kim, H., Moschini, G., 2018. The dynamics of supply: US corn and soybeans in the biofuel era. *Land Econ.* 94 (4), 593–613.
- Knittel, N., Jury, M.W., Bednar-Friedl, B., Bachner, G., Steiner, A.K., 2020. A global analysis of heat-related labour productivity losses under climate change - implications for Germany's foreign trade. *Clim. Change* 160 (2), 251–269.
- Koks, E.E., Rozenberg, J., Zorn, C., Tariverdi, M., Voudoukas, M., Fraser, S.A., Hall, J.W., Hallegatte, S., 2019. A global multi-hazard risk analysis of road and railway infrastructure assets. *Nat. Commun.* 10 (1), 2677.
- Kurukulasuriya, P., Kala, N., Mendelsohn, R., 2011. Adaptation and climate change impacts: a structural Ricardian model of irrigation and farm income in Africa. *Climate Change Economics* 2 (02), 149–174.
- Li, C., Xiang, X., Gu, H., 2015. Climate shocks and international trade: Evidence from China. *Econ. Lett.* 135, 55–57.
- Liu, Y., Wang, S., Chen, B., 2019. Water–land nexus in food trade based on ecological network analysis. *Ecol. Ind.* 97, 466–475.
- Melitz, M.J., 2003. The Impact of Trade on Intra-industry Reallocations and Aggregate Industry Productivity. *Econometrica* 71 (6), 1695–1725.
- Mendelsohn, R., Dinar, A., Williams, L., 2006. The distributional impact of climate change on rich and poor countries. *Environ. Dev. Econ.* 11 (2), 159–178.
- Mendelsohn, R., Massetti, E., 2017. The Use of Cross-Sectional Analysis to Measure Climate Impacts on Agriculture: Theory and Evidence. *Rev. Environ. Econ. Policy* 11 (2), 280–298.
- Mendelsohn, R., Nordhaus, W.D., Shaw, D., 1994. The impact of global warming on agriculture: a Ricardian analysis. *Am. Econ. Rev.* 753–771.
- Mendelsohn, R., Nordhaus, W.D., Shaw, D., 1996. Climate impacts on aggregate farm value: accounting for adaptation. *Agric. For. Meteorol.* 80 (1), 55–66.
- Mérel, P., Gammans, M., 2021. Climate Econometrics: Can the Panel Approach Account for Long-Run Adaptation? *Am. J. Agric. Econ.* 103 (4), 1207–1238.
- Meyfroidt, P., Lambin, E.F., 2009. Forest transition in Vietnam and displacement of deforestation abroad. *Proc. Natl. Acad. Sci.* 106 (38), 16139–16144.
- Meyfroidt, P., Rudel, T.K., Lambin, E.F., 2010. Forest transitions, trade, and the global displacement of land use. *Proc. Natl. Acad. Sci.* 107 (49), 20917–20922.
- Olper, A., Raimondi, V., 2008. Agricultural market integration in the OECD: A gravity-border effect approach. *Food Policy* 33 (2), 165–175.
- Ortiz-Bobea, A., 2020. The Role of Nonfarm Influences in Ricardian Estimates of Climate Change Impacts on US Agriculture. *American Journal Agricultural Economics* 102 (3), 934–959.
- Pearl, J., 2009. *Causality: Models, Reasoning, and Inference*, 2nd ed. Cambridge University Press, New York.
- Reilly, J., Hohmann, N., 1993. Climate change and agriculture: the role of international trade. *Am. Econ. Rev.* 83 (2), 306–312.
- Reimer, J.J., Li, M., 2009. Yield variability and agricultural trade. *Agricultural and Resource Economics Review* 38 (2), 258–270.
- Reimer, J.J., Li, M., 2010. Trade costs and the gains from trade in crop agriculture. *Am. J. Agric. Econ.* 92 (4), 1024–1039.
- Rosenzweig, C., Parry, M.L., 1994. Potential impact of climate change on world food supply. *Nature* 367 (6459), 133–138.
- Sahay, S., 2018. Urban adaptation to climate sensitive health effect: Evaluation of coping strategies for dengue in Delhi, India. *Sustain. Cities Soc.* 37, 178–188.
- Santeramo, F.G., Di Gioia, L., Lamonaca, E., 2021a. Price responsiveness of supply and acreage in the EU vegetable oil markets: Policy implications. *Land Use Policy* 101, 105102.
- Santeramo, F.G., Lamonaca, E., 2019. The effects of non-tariff measures on agri-food trade: a review and meta-analysis of empirical evidence. *J. Agric. Econ.* 70 (3), 595–617.
- Santeramo, F.G., Lamonaca, E., 2022a. On the trade effects of bilateral SPS measures in developed and developing countries. *World Econ.* 45 (10), 3109–3145.
- Santeramo, F.G., Lamonaca, E., 2022b. Standards and regulatory cooperation in regional trade agreements: What the effects on trade? *Appl. Econ. Perspect. Policy* 44 (4), 1682–1701.
- Santeramo, F.G., Miljkovic, D., Lamonaca, E., 2021b. Agri-food trade and climate change. *Economia Agro-Alimentare/Food Economy* 23 (1), 7, 1–18.
- Shapiro, J.S., 2021. The Environmental Bias of Trade Policy. *Q. J. Econ.* 136 (2), 831–886.
- Silva, S., Tenreyro, S., 2006. The log of gravity. *Rev. Econ. Stat.* 88 (4), 641–658.
- United Nations, 2020. *World Economic Situation and Prospects 2020*. United Nations, New York.
- United Nations Department of Economic and Social Affairs, Population Division, 2022. *World Population Prospects 2022: Summary of Results*. UN DESA/POP/2022/TR/NO. 3.
- World Bank, 2018. *Metadata of the Climate Change Knowledge Portal*.
- WTO, 2022. *World Trade Report 2022: Climate change and international trade*. World Trade Organisation.
- Yotov, Y.V., Piermartini, R., Monteiro, J.A., Larch, M., 2016. *An advanced guide to trade policy analysis: The structural gravity model*. World Trade Organization, Geneva.
- Zampieri, M., Ceglari, A., Dentener, F., Toreti, A., 2017. Wheat yield loss attributable to heat waves, drought and water excess at the global, national and subnational scales. *Environ. Res. Lett.* 12 (6), 064008.
- Zhang, P., Deschênes, O., Meng, K., Zhang, J., 2018. Temperature effects on productivity and factor reallocation: Evidence from a half million Chinese manufacturing plants. *J. Environ. Econ. Manag.* 88, 1–17.
- Zhang, H., Zhang, Z., Dong, G., Yu, Z., Liu, K., 2021. Identifying the supply-demand mismatches of ecorecreation services to optimize sustainable land use management: A case study in the Fenghe River watershed, China. *Ecol. Indic.* 133, 108424.
- Zimmermann, A., Benda, J., Webber, H., Jafari, Y., 2018. Trade, food security and climate change: conceptual linkages and policy implications. *FAO, Rome*.