



**QUEEN'S
UNIVERSITY
BELFAST**

Collective synchrony increases prosociality towards non-performers and out-group members

Reddish, P., Tong, E. M. W., Jong, J., Lanman, J. A., & Whitehouse, H. (2016). Collective synchrony increases prosociality towards non-performers and out-group members. *British Journal of Social Psychology*, 55(4), 722-738. <https://doi.org/10.1111/bjso.12165>

Published in:

British Journal of Social Psychology

Document Version:

Peer reviewed version

Queen's University Belfast - Research Portal:

[Link to publication record in Queen's University Belfast Research Portal](#)

Publisher rights

© 2016 The British Psychological Society

This is the peer reviewed version of this article: Reddish, P., Tong, E. M. W., Jong, J., Lanman, J. A. and Whitehouse, H. (2016), Collective synchrony increases prosociality towards non-performers and outgroup members. *British Journal of Social Psychology*, which has been published in final form at <http://onlinelibrary.wiley.com/doi/10.1111/bjso.12165/abstract>. This article may be used for non-commercial purposes in accordance with Wiley Terms and Conditions for Self-Archiving.

General rights

Copyright for the publications made accessible via the Queen's University Belfast Research Portal is retained by the author(s) and / or other copyright owners and it is a condition of accessing these publications that users recognise and abide by the legal requirements associated with these rights.

Take down policy

The Research Portal is Queen's institutional repository that provides access to Queen's research output. Every effort has been made to ensure that content in the Research Portal does not infringe any person's rights, or applicable UK laws. If you discover content in the Research Portal that you believe breaches copyright or violates any law, please contact openaccess@qub.ac.uk.

Open Access

This research has been made openly available by Queen's academics and its Open Research team. We would love to hear how access to this research benefits you. – Share your feedback with us: <http://go.qub.ac.uk/oa-feedback>

SYNCHRONY INCREASES PROSOCIALITY

Running head: *Synchrony increases prosociality*

Collective synchrony increases prosociality towards non-performers and out-group members

Paul Reddish^{1*}, Eddie M. W. Tong¹, Jonathan Jong², Jonathan A. Lanman³, and Harvey Whitehouse⁴

¹ National University of Singapore, Singapore

² Coventry University, Coventry, United Kingdom

³ Institute of Cognition and Culture, Queen's University, Belfast, United Kingdom

⁴ Institute of Cognitive and Evolutionary Anthropology, University of Oxford, Oxford, United Kingdom

Word count (excluding abstract, reference list, figures, or tables): 6143

Abstract: 181 words

Tables: 4

Figures: 2

Author note

This research was supported by a Large Grant from the UK's Economic and Social Research Council (REF RES-060-25-0085) entitled "Ritual, Community, and Conflict" and an award from the John Templeton Foundation entitled "Religion's Impact on Human Life."

Requests for reprints should be addressed to Paul Reddish, Department of Psychology National University of Singapore, Block AS4, #02-07, 9 Arts Link, Singapore 117570 (email: paulreddishnz@gmail.com).

SYNCHRONY INCREASES PROSOCIALITY

Abstract

Previous research has found that behavioural synchrony between people leads to greater prosocial tendencies towards co-performers. In this study we investigated the scope of this prosocial effect: does it extend beyond the performance group to an extended in-group (*extended parochial prosociality*) or even to other people in general (*generalized prosociality*)? Participants performed a simple rhythmic movement either in time (synchrony condition) or out of time (asynchrony condition) with each other. Before and during the rhythmic movement, participants were exposed to a prime that made salient an extended in-group identity. After the task, half the participants had the opportunity to help an extended in-group member; the other half had the opportunity to help an out-group member. We found a main effect of our synchrony manipulation across both help targets suggesting that the prosocial effects of synchrony extend to non-performers. Furthermore, there was a significantly higher proportion of participants willing to help an out-group member after moving collectively in synchrony. This study shows that under certain intergroup contexts synchrony can lead to *generalized prosociality* with performers displaying greater prosociality even towards out-group members.

Keywords: cooperation, dance, helping, identity, prosocial, ritual, synchrony

SYNCHRONY INCREASES PROSOCIALITY

Collective synchrony increases prosociality towards non-performers and out-group members

The interpersonal matching of rhythmic behaviour—*synchrony*—is a common component of many collective rituals (McNeill, 1995). All over the world and throughout history, people gather together to dance, sing, march, chant and make music in time with one another. Such synchronization has often been hypothesized as a key mechanism in the purported solidarity enhancing effects of collective rituals (Durkheim, 1965; Ehrenreich, 2006; Fischer, Callander, Reddish, & Bulbulia, 2013; Haidt, Seder, & Kesebir, 2008; Wiltermuth & Heath, 2009). Recent laboratory studies have found converging evidence in support of this hypothesis. Synchrony has been shown to lead to higher levels of prosociality towards co-performers as assessed via a variety of measures (e.g., cooperation, compassion, helpfulness, liking) in both adults (Hove & Risen, 2009; Launay, Dean, & Bailes, 2014; Reddish, Fischer, & Bulbulia, 2013; Valdesolo & DeSteno, 2011; Wiltermuth & Heath, 2009; Wiltermuth, 2012a, 2012b) and children (Cirelli, Einarson, & Trainor, 2014; Cirelli, Wan, & Trainor, 2014; Kirschner & Tomasello, 2010; Rabinowitch & Knafo-Noam, 2015; Tunçgenç, Cohen, & Fawcett, 2015; Tunçgenç & Cohen, 2016)

Although the social effects of synchrony have primarily been investigated in terms of its effects on co-performers, synchronous performances appear to also increase solidarity in larger groups whose members are not all physically co-present during the synchronized performance, as in collective singing of national anthems and collective chanting of national pledges. Although the language of such rituals is often rich in pro-nationalistic primes, the process of synchronization with one's fellow citizens might also have an effect in bonding one to their country (McNeill, 1995; Wiltermuth & Heath, 2009). The current research investigates if the prosocial effects of synchrony can extend beyond the performance group to other non-performing members of an extended in-group or other people in general including members of an out-group.

SYNCHRONY INCREASES PROSOCIALITY

Previous research has found that two social cognitive mechanisms—perceiving the synchronised group as a team (entitativity; Wiltermuth & Heath, 2009) and perceiving similarity with one’s synchronised partner (Valdesolo & DeSteno, 2011)—mediated synchrony’s prosocial effect. Because both of these psychological mechanisms are targeted at the specific members of the performance group, it might lead us to expect that synchrony’s prosocial effects are restricted to the performance group. A couple of recent experiments support this hypothesis. One study with infants found that the social effects of synchrony were restricted to the synchronizing partner: infants were not more likely to help a neutral stranger after moving in synchrony with the experimenter (Cirelli, Wan, et al., 2014). In another study with high school students, self-reported prosocial tendencies were measured after performing the same movement at the same time (synchrony) or different movements at the same time (partial synchrony). Synchrony was only found to produce a greater increase in prosociality towards co-performers, not fellow students who did not take part in the activity (Tarr, Launay, Cohen, & Dunbar, 2015).

However, other research suggests that the prosocial effects of synchrony may spread beyond the boundaries of the perform

ance group: synchronized participants were more helpful than participants in a non-movement control condition regardless of whether the target of the helpful act was a fellow performer or a non-performer (Reddish, Bulbulia, & Fischer, 2014). A second study by the authors found that this effect also occurred when the prosocial target was a group: participants were more generous to an out-group (created through the minimal group paradigm) after performing a synchronized task compared to a non-synchronized group task (completing a puzzle).

This finding was originally suggested to be supportive of a *generalized prosociality* model: synchrony shifts individuals’ prosocial orientation such that they are more willing to

SYNCHRONY INCREASES PROSOCIALITY

cooperate with others in general (Reddish et al., 2014). Being in synchrony with other people may lead to an increased awareness of one's interconnection with other people resulting in a general shift in one's self-construal towards interdependence with others (Markus & Kitayama, 1991). However, an alternative possibility is that synchrony leads to *extended parochial prosociality*: the prosocial effects of synchrony may extend beyond the performance group but be restricted to an extended in-group — a more inclusive in-group, such as a nation, that is made salient by the specific social context. Synchronous performances are often performed before intergroup conflict such as war (e.g. military drill; Fessler & Holbrook, 2014; McNeill, 1995) suggesting that the prosocial effects of synchrony should be bounded to a salient superordinate in-group. Moreover, the well-established findings in the psychological literature on in-group bias suggest that participants should favour helping the salient in-group rather than the out-group (see Hewstone, Rubin, & Willis, 2002). Reddish et al.'s (2014) studies did not compare relative giving towards an extended in-group versus an out-group: therefore, these two competing hypotheses were not directly compared.

To explore the scope of synchrony's prosocial effects, we manipulated synchrony in groups of 3 or 4 participants whilst making salient an existing extended in-group identity through the use of a subtle identity prime. The in-group in this case was the participants' university ([REMOVED UNIVERSITY NAME FOR ANONYMITY]). To assess prosociality we used a similar helping measure as employed by Reddish et al. (2014), but directly compared giving to an extended in-group member (an anonymous student from the participant's university) versus giving to an out-group member (an anonymous student from a rival university). We then compared the generalized prosociality model and the extended parochial prosociality model. The generalized prosociality model hypothesises a main effect of our synchrony manipulation, with synchrony resulting in greater prosociality compared to

SYNCHRONY INCREASES PROSOCIALITY

asynchrony – independent of group membership. The extended parochial prosociality model hypothesises an interaction between our synchrony manipulation and the help-target: the boost that synchronous movement has on prosociality relative to asynchrony is dependent on who the help target is. The extended parochial prosociality model, like the generalised prosociality model, hypothesises that synchrony should result in a greater propensity to help an extended in-group member than asynchrony. However, the critical difference between these two hypotheses is that the generalised prosociality model hypothesises that synchrony will produce a greater tendency to help when the target is an out-group member, whereas the extended parochial prosociality model hypothesises no difference between conditions when the target is an out-group member.

To replicate previous research, we included self-reported measures of social bonding with co-performers, entitativity (i.e. perceiving the group as a team) and perceived similarity to the group. Based on previous literature (Valdesolo & DeSteno, 2011; Wiltermuth & Heath, 2009), we hypothesised a main effect of our synchrony manipulation on all three of these variables with synchronous movement producing higher means than the asynchrony condition, and with entitativity and similarity mediating the effect of our synchrony manipulation on social bonding with co-performers.

We also aimed to explore what psychological factors may produce any generalised or extended parochial prosocial effect of synchronous movement. One possibility is that synchronising with co-performers who belong to an extended in-group could result in the bonding that is created between co-performers being projected on to the extended in-group. This hypothesis predicts that bonding with co-performers would mediate the relationship between our synchrony manipulation and extended prosociality. Another possibility is that performing synchrony with a salient identity of an extended in-group increases identification with that extended in-group. To investigate this hypothesis, we included self-reported

SYNCHRONY INCREASES PROSOCIALITY

measures of social identification and identity fusion. Identity fusion is when a particular social identity that a person holds becomes an essential component of their personal self (Swann, Jetten, Gómez, Whitehouse, & Bastian, 2012). It has been found to be a strong predictor of parochial prosociality such as fighting and dying for one's group (Swann, Gómez, Dovidio, Hart, & Jetten, 2010; Swann, Gomez, Huici, Morales, & Hixon, 2010; Swann, Gomez, Seyle, Morales, & Huici, 2009). We hypothesised that synchronous movement would lead to greater social identification and identity fusion and that these constructs would mediate the relationship between our synchrony manipulation and extended prosociality.

Finally, Launay (2012) argued that as well as the degree of synchronisation between performance members, there are four other key variables in which synchrony and asynchrony conditions may differ that could influence prosociality: (1) motivation to cooperate together on the task, (2) attention directed at others, (3) prediction of others' actions, and (4) perceived success at the task. We included measures of these control variables as well as the control variables of perceived difficulty, perceived enjoyment, mood, and how well participants knew the other participants in their group to check that these constructs do not better explain any detected social effects from our synchrony manipulation.

Method

Participants

Participants were 150 students in groups of three or four¹ (59.3% female; mean age = 21.70, range: 18-29 years). Of these students, 75 were recruited from undergraduate psychology classes at the [UNIVERSITY NAME] and were given course credits for participation. The other 75 were recruited from the wider university student population and were paid for their participation (groups consisted of participants for which all were paid or

SYNCHRONY INCREASES PROSOCIALITY

all were given course credit). Participants for the two methods of recruitments were evenly distributed across the four conditions, $\chi^2(3, N = 150) = .47, p = .932$

Procedure

The design was a 2 x 2 between-subject factorial with the independent variables of our *synchrony manipulation* (synchrony, asynchrony) and *help target* (extended in-group, out-group).

Participants on arriving at the laboratory venue were provided a written information sheet outlining that they were invited to take part in two studies: the first to do with group coordination; and the second study to do with social attitudes. Our measures of identification were presented as a different second study about social attitudes to help prevent participants from linking the identity prime with these questions. After participants signed consent, they were then led into a room to perform the synchrony manipulation.

Synchrony manipulation. The synchrony manipulation was adapted from Reddish et al. (2013). Participants, in groups of three or four, were asked to rhythmically step on foot-pedals with alternating feet for four minutes whilst moving their left arm forward with their left leg and their right arm forward with their right leg. As Reddish et al. (2013) found that it was the combination of synchrony with a shared goal that produced the greatest level of cooperative behaviour, a shared goal was included. In the synchrony condition, participants were told that the goal of the task was to move “in time with each other; this means that you are consistently pressing the pedal at the same time as each other, and moving at the same speed”. They were also told that the experimenter would be measuring how accurately they kept in time with each other through the use of the foot-pedals. To help participants move in time, they heard the same metronome beat played through headphones at 50 beats per minute (bpm). In the asynchrony condition participants were told that the goal of the task was to move “out of time with each other; this means that you are *not* consistently pressing the

SYNCHRONY INCREASES PROSOCIALITY

pedals at the same time as another, but will be moving at different speeds”. They were also told that the experimenter was measuring how accurately they moved out of time with each other. Each participant in the group heard a different metronome beat played through headphones at 45bpm, 50bpm, 55bpm, and, if there were 4 group members, 60bpm.

The metronome beats for both conditions were played throughout the four minute movement. The beat was in 4/4 timing with the first beat accented with a cymbal sound and the other three beats a drum sound. Participants moved their left foot forward on the first beat, back on the second beat, their right foot forward on the third beat and back on the last beat. Participants were informed that after about 30 seconds they would only hear the first and third beats. This meant that participants had to pay attention to the other participants to help cue the timing of their movements and so increase the sense of shared intentionality, while still allowing experimental control over the speed of participants’ movements.

Group prime. To make group membership salient and establish a relevant extended in-group and out-group, participants’ identity as members of [UNIVERSITY NAME] was primed. However, it was important that in-group salience was not made so obvious as to cue participants to the fact that we were trying to prime identity. To this end, participants were told that the study was being run at a few different universities and that the experimenters would be comparing performance. “It is therefore important, *as* [UNIVERSITY NAME] *students*, that you work together to keep in time [out of time] with each other.” To further make [UNIVERSITY NAME] identity salient, a bright orange bag featuring the [UNIVERSITY NAME] logo was placed in the room in front of where the students performed the stepping task.

Prosocial measure. After the synchrony manipulation, participants were told they had two questionnaires to complete. The experimenter then told participants: “I have also been asked by a student if I can distribute some information about research they are doing. So

SYNCHRONY INCREASES PROSOCIALITY

there will be some information about that along with the two questionnaires.” Participants were then given an additional form with the plea for help along with questionnaires. The form was headed by either the [UNIVERSITY NAME] logo (extended in-group condition) or the logo of the local rival university – [RIVAL UNIVERSITY NAME] (out-group condition). The text stated that the student was at either the [UNIVERSITY NAME] or [RIVAL UNIVERSITY NAME] and looking for volunteers to take part in research that involved filling out a number of surveys online. Participants were asked to indicate on the form if they were willing to help, how much time they could volunteer, and their email address. The form stated that no payment or grade points would be received – the volunteering was, therefore, unrewarded. Participants were given an envelope to place the form in so as to keep the response anonymous and reduce any tendency to respond in a socially desirable manner. The form was always placed on top of the questionnaires and the experimenter told participants he would collect the form shortly so that it would be completed before the questionnaires.

Post-activity questionnaire. The post-activity questionnaire included a number of self-report scales to measure potential mediating variables as well as manipulation checks and control variables. To measure social bonding with co-performers we used a version of the Inclusion of Other in Self-scale targeted for groups (Swann, Gomez, Seyle, Morales, & Huici, 2009). Participants were shown a series of seven² increasingly overlapping circles and were asked to indicate which picture “best represents your relationship with the group of people you just did the movement activity with”. The same four entitativity items as used in Reddish et al. (2013, Study 2) were used (for example: “did you feel you and the other participants were a unit?”) along with the single item to assess perceived similarity “how much did you feel similar to the other participants?” Entitativity and perceived similarity were both measured on a 7 point Likert scale from 1 (*Not at all*) to 7 (*Very much so*). As the

SYNCHRONY INCREASES PROSOCIALITY

perceived similarity item was highly correlated with the entitativity scale ($r = .73$) and maps onto a similar construct it was included in the entitativity scale (Cronbach $\alpha = .92$)³.

We included two different measures of identification with the extended in-group ([UNIVERSITY NAME]): the verbal identity fusion scale (Gómez et al., 2011; Cronbach $\alpha = .92$) and Mael and Ashforth's (1992) group identity scale (Cronbach $\alpha = .85$) – what we term *extended fusion* and *extended identification* respectively. Participants were asked to indicate how strongly they agreed or disagreed on a 7 point Likert scale about a number of statements about their relationship with [UNIVERSITY NAME] such as: “I am one with [UNIVERSITY NAME]” (identity fusion scale) and “when someone praises [UNIVERSITY NAME], it feels like a personal compliment” (group identity scale).

As a manipulation check, the same four items as used by Reddish et al. (2014) were used to measure perceived synchrony from 1 (*Not at all*) to 7 (*Very much so*): (for example: “did you feel the other participants and yourself moved in unison with each other?”) (Cronbach $\alpha = .85$). To assess the control variables of motivation to cooperate together on the task, attention directed at others, prediction of others' actions, and perceived success at the task, we asked participants on a scale for 1 (*Not at all*) to 7 (*Very much so*): (1) one item asking: “how much did you feel you and the other participants cooperated during the task?”; (2) two items to measure the amount of attention paid to the other participants: “how much did you pay attention to the other participants?”, “how much did you try to ignore the other participants?” (reverse coded), (Cronbach $\alpha = .70$); (3) one item asking: “how much were you able to predict the other group member's movements?”; and (4) one item asking: “how successful do you feel your group was at achieving the goal of the movement task?” As further checks for potential differences between the movement conditions, participants were also asked on the same scale of 1 (*Not at all*) to 7 (*Very much so*) how enjoyable and difficult the movement activity was and also three questions about their mood: if they currently feel

SYNCHRONY INCREASES PROSOCIALITY

happy, relaxed, and energetic. The scales used to assess the control variables were created by the authors to directly measure the constructs of interest with high face validity.

Finally, participants were asked general demographic questions, how well they knew the other participants and their thoughts on the purpose of each of the supposed two studies.

After completing the post-activity questionnaire participants were thanked, given course credits (or paid), and informed they would be debriefed on the study purpose at the end of the semester (after data gathering was complete). A delayed debriefing was deemed necessary because if the helping measure was revealed as a test to future participants it could compromise the validity of the measure.

Results

Based on responses to the open-ended questions on the study purpose, two participants indicated they thought the plea for help was a test. These participants were removed from all analyses (N =148 for remaining analyses).

Pre-experimental bonding

The majority of groups consisted of participants who were strangers to each other: 77% of participants had never seen the other participants before. Twenty participants knew at least one other participant “very well”. These participants were spread relatively evenly across conditions, $\chi^2(3) = 1.80, p = .618$.

Manipulation check

As expected participants in the synchrony condition did indeed perceive being more in synchrony than participants in the asynchrony condition (see Table 1).

[Table 1 about here]

Willingness to help

As with previous studies that have used a similar prosocial measure (e.g., Dickert, Kleber, Peters, & Slovic, 2011; Hopkins et al., 2007; Krátký, McGraw, Xygalatas, Mitkidis,

SYNCHRONY INCREASES PROSOCIALITY

& Reddish, 2016; Olivola & Shafir, 2013), willingness to help was strongly positively skewed across all conditions with a total of 38% of participants indicating that they were not willing to donate time. Recent data suggests that different cognitive mechanisms underlie the decision to donate and the decision on how much to donate (Dickert, Sagara, & Slovic, 2011). Because of this, we used a two-part model (Lachenbruch, 2001) to analyse if our data supported either the generalised prosociality model or the extended parochial prosociality model: we first assessed if our manipulations influenced the decision to help or not and then examined if there were differences between conditions in *the amount of time* participants were willing to donate for those participants who were willing to help (non-zero values, $n = 92$).

We conducted a binary logistic regression analysis with our synchrony manipulation, help target, and their interaction as predictors and the dichotomous variable *willing to help or not* as the dependent variable. As shown in Table 2, there was a significant main effect of our synchrony manipulation as well as a main effect of help target: participants in the synchrony condition were more willing to help than participants in the asynchrony condition, and participants were more willing to help a fellow extended in-group member than an out-group member. However, the interaction between our synchrony manipulation and help-target was not significant. We also compared whether or not synchrony produced a greater tendency to help when the target was an out-group as this was the critical difference between the hypotheses for the generalized prosociality model and the extended parochial prosociality model (see Figure 1). In further support of the generalized prosociality model, the proportion of participants who helped an out-group member was significantly different with individuals in the synchrony condition more likely to help, $\chi^2(1) = 5.36, p = .035, \text{odds ratio} = 3.03$.

[Figure 1 about here]

[Table 2 about here]

SYNCHRONY INCREASES PROSOCIALITY

The data were still significantly positively skewed for the amount of time participants were willing to donate (skewness z scores > 1.96 for all conditions). Therefore, we log transformed the data resulting in much smaller skewness scores (skewness z scores < 0.91). A factorial ANOVA with our synchrony manipulation and help target as the factors and the log transformed help data as the dependent variable found no significant main effects or interactions, $F_{\max} = 0.85$. The critical comparison of a difference between conditions in the amount of time participants were willing to donate to an out-group member was also non-significant, $t(39) = .71, p = .483$

Self-report social bonding and identification measures

In support of our hypotheses, participants in the synchrony condition reported greater social bonding and entitativity with their performance group than participants in the asynchrony condition. However, we found no support for our hypotheses that there would be significant differences between the synchrony conditions in terms of extended fusion with [UNIVERSITY NAME] and extended identification with [UNIVERSITY NAME] (Table 1).

Mediation analyses

We examined the hypothesis that entitativity would mediate synchrony's effect on social bonding with co-performers by using Model 4 of the PROCESS macro (Hayes, 2013) with bonding with co-performers as the dependent variable and our synchrony manipulation as the independent variable (Figure 2a). Using a bias-corrected bootstrap of 5,000 samples, the indirect effect of our synchrony manipulation on bonding with co-performers via entitativity was significant, $b = 1.37, 95\% \text{ CI}[0.88, 1.92]$. The direct effect of our synchrony manipulation on bonding with co-performers was also significant, $b = 0.56, 95\% \text{ CI}[0.02, 1.11]$.

Next, we examined the hypothesis that social bonding with co-performers might mediate the effect of our synchrony manipulation on the decision to help or not⁴ (Figure 2b).

SYNCHRONY INCREASES PROSOCIALITY

Because the tendency to help or not was dependent on who the target was, the manipulation of the help target was included as a moderator on both the direct path from synchrony to the dichotomous variable of helping and on the indirect path of the mediator (social bonding) to helping. Model 15 of the PROCESS macro with a bias-corrected bootstrap of 5,000 samples was used to test this moderated mediation but there were no significant direct or indirect effects. Finally, we also conducted a similar moderated mediation to test the hypotheses that extended fusion (Figure 2c) or extended identification (Figure 2d) might mediate the synchrony-helping relationship. In both cases there were no significant direct or indirect effects.

[Figure 2 about here]

Control variables

We conducted exploratory analyses to assess whether any of our control variables differed across conditions and so may better explain our results than synchrony. The synchrony and asynchrony conditions significantly differed across all the four variables highlighted by Launay (2012), with the synchrony condition having higher perceived cooperation, feelings of success, attention directed towards the other participants, and ability to predict others. The conditions also differed in perceived difficulty to perform the task with participants in the synchrony condition reporting it to be easier to perform. There were no differences between conditions in reported levels of enjoyment, or in how happy, relaxed or energetic participants felt. (See Table 1).

Because the conditions differed across these five control variables (cooperation, success, attention, prediction, and difficulty) it is possible that one of these variables may better explain the differences we found between conditions in our social measures (helping, bonding with co-performers, entitativity) than synchrony. To explore if this is the case, we conducted regression analysis with our social measures as dependent variables with the five

SYNCHRONY INCREASES PROSOCIALITY

control variables as predictors along with the synchrony manipulation, the help target manipulation, and their interaction. A logistic regression with the decision to help or not as the dependent variable was not significant, $\chi^2(8) = 12.27, p = .139$ and neither were any of the control predictors. The main effects of our synchrony manipulation and help target were still marginally significant ($p < .10$) and the synchrony manipulation had the highest odds ratio suggesting synchrony still explained the most variance (see Table 3). Multiple regressions with bonding with co-performers or entitativity as the dependent variable were significant ($ps < .001$) and in both cases the synchrony manipulation was a significant predictor. For both bonding with co-performers and entitativity, the synchrony manipulation was either the best or equal best predictor with the highest standardised coefficient. Perceived cooperation and attention directed towards others were also significant predictors suggesting these two control variables, in particular, may be important in explaining synchrony's social effects. However, all the control variables were moderately to strongly correlated with each other and also with perceived synchrony so indicating multicollinearity (see Table 4). This suggests that untangling these different factors to isolate the causal antecedent may be difficult.

[Table 3 and 4 about here]

Discussion

The current study examined whether synchrony can boost prosocial behaviour towards a member of an extended in-group who did not take part in the synchronous performance but not an out-group member (extended parochial prosociality model) or if it leads to greater prosociality towards other people in general including members of an out-group (generalized prosociality model). To assess this, we primed an extended in-group identity during the synchrony manipulation task and measured willingness to help an anonymous extended in-group or out-group member. Our main effect of help target on

SYNCHRONY INCREASES PROSOCIALITY

willingness to help shows that overall there was an in-group bias: participants after being primed with their university identity were more likely to help a fellow student from their university than a student from another university. Crucially, we found a main effect of our synchrony manipulation with a greater proportion of participants in the synchrony condition indicating that they were willing to help an anonymous individual outside of the performance group than in the asynchrony condition. This finding is in concordance with previous research that has found that the prosocial effects of synchrony extend beyond the performance group (Reddish et al., 2014). Moreover, the non-significant interaction along with the main-effect of our synchrony manipulation supports the hypotheses of the generalised prosociality model. In further support for this model, we found that synchrony, relative to asynchrony, resulted in a significantly greater proportion of participants helping an *out-group* member: the odds of a participant helping an out-group member in the synchrony condition were over three times greater than helping in the asynchrony condition.

Although these particular results do lend strong support towards the generalised prosociality model, some of our other results do lead us to be more circumspect. Firstly, synchrony's effect on helping was only found with the decision to help or not. There was no effect of synchrony on the decision on how much time to donate. Based on dual-process theories (Kahneman, 2003), Dickert et al. (2011) suggest that donating involves two processes: an initial decision to donate based on more automatic, intuitive processes (stage 1), and a secondary more effortful considered decision on how much to donate (stage 2). As stage 1 is more automatic and associative it seems logical that this system would be more sensitive to subtle experimental effects such as we found. Although other studies have found that synchrony does increase the degree of helping or cooperation (Valdesolo & DeSteno, 2011; Wiltermuth & Heath, 2009), these studies did not separate out the two processes. It is also possible that this differential effect with the two processes may be an artefact of the type

SYNCHRONY INCREASES PROSOCIALITY

of helping measure we used. It would be beneficial in the future to replicate these effects with a different measure of prosociality.

Secondly, on close inspection of Figure 1, it can be seen that there appears to be little difference between the synchrony and asynchrony conditions in the proportion of participants willing to help an extended in-group member. This may appear to counter the hypothesis that generalised prosociality should also boost prosociality towards extended in-group members. Notably, our results bear a striking similarity to Tunçgenç and Cohen's (2016) data of a significant difference in social bonding to an out-group between synchronous and non-synchronous conditions, but no difference between conditions in terms of bonding with an in-group. In Tunçgenç and Cohen's (2016) study, participants performed with out-group members so the results are not directly comparable to ours, but the similar pattern could suggest that prosocial effects of synchrony directed at an in-group are moderated by an intergroup context. Another possibility is that our helping measure was not sensitive enough to detect a small effect of synchrony over and above that produced by the in-group bias of making the participant's university salient. As mentioned above, replication with a different measure of prosociality may shed further light on this issue. However, because of the non-significant interaction in the logistic regression, we advise caution in interpreting this result.

Our finding that the prosocial effects extend beyond the performance group appears to conflict with the studies by Cirelli, Wan, et al. (2014) and Tarr et al. (2015). However, there are a number of methodological differences which could explain the diverging results. Firstly, Cirelli, Wan et al.'s study was conducted in dyads, whereas our study was performed in small groups with a salient extended in-group and out-group. Conducting synchrony in a group context may activate group-based social cognition which produces these generalised effects, whereas any prosocial effect produced by dyadic synchrony is restricted to a specific individual. Secondly, Cirelli, Wan et al.'s study was conducted with 14-month old infants. It

SYNCHRONY INCREASES PROSOCIALITY

may be that particular prosocial effects produced by synchrony follow developmental trajectories as the social psychological processes that produce them come on-line (Dunham, Baron, & Banaji, 2008). Tarr et al.'s study was conducted with high school students, so developmental effects are less likely. However, unlike our study, non-performers were well known and potentially socially close to performers, which could moderate synchrony's prosocial effects. Crucially, Tarr et al. measured prosociality via self-reported closeness, including the Inclusion of Other in Self scale that we used to measure bonding with co-performers. We found that self-reported closeness to co-performers was unrelated to our measure of willingness to help. Likewise, it may be that self-reported closeness to an out-group is unrelated to willingness to help members of that out-group.

Our finding of generalised prosociality may also appear to conflict with anecdotal observations and proposed evolutionary scenarios of the use of synchronised collective rituals before intergroup conflict (Fessler & Holbrook, 2014; McNeill, 1995). However, it is important to note that in our study there was no explicit competition or conflict between the two groups in the experimental context. When such competition is made salient this may reduce or eliminate the extent to which the prosocial effects of synchrony are generalised. In contrast to this hypothesis, a study comparing the social effects of competitive singing versus cooperative singing found an increase in social closeness to an out-group in both scenarios, but, interestingly, found a decrease in social closeness when competing with fellow in-group members (Pearce, Launay, van Duijn, Rotkirch, & Dunbar, 2016). However, in this study participants performed together with the out-group when competing, which may influence prosociality towards them. Moreover, competitive singing in this context was a low-risk activity for the group. The moderating effect of intergroup competition may be greater in real life situations where competitive stakes are high (for example life dependent resources like food or land) or sacred values are compromised (Atran & Ginges, 2012). In situations with

SYNCHRONY INCREASES PROSOCIALITY

high intergroup conflict, members of the out-group may even be dehumanised, creating a psychological barrier to synchrony's prosocial effects (Waytz, Epley, & Cacioppo, 2010).

In accord with previous studies, we replicated the effect of synchrony boosting self-reported social bonding with the performance group. Furthermore, our data also replicated the role of entitativity in mediating the effect of synchrony on bonding with the performance group. However, the significant direct effect of our synchrony manipulation on bonding to the performance group suggests that there are other important key mediators apart from entitativity that might also be involved in producing this bonding effect. Counter to our hypothesis, the degree of bonding with co-performers did not significantly mediate the relationship with the decision to help or not, nor was it significantly correlated with helping. This suggests that the generalised prosocial effect was not due to a projection of the bonding with co-performers to a wider extended in-group. This finding parallels the results of Fessler and Holbrook (2014) in which synchrony's significant effect on participants' impression of the formidability of an out-group member was independent of synchrony's bonding effect and suggests that some of synchrony's social effects can occur independently of bonding with co-performers. Our measures of extended fusion and extended identification also did not significantly mediate the synchrony-helping effect – which was not too surprising given that synchrony did not produce parochial prosociality.

What then may account for our finding of generalised prosociality? Studies have found that participants pay more attention towards synchronized partners (Macrae, Duffy, Miles, & Lawrence, 2008; Woolhouse & Lai, 2014; Woolhouse, Tidhar, & Cross, 2016) with shared attention leading to greater social bonding (Wolf, Launay, & Dunbar, 2016). Such shared attention during synchronisation could lead participants to become more aware of their social context. This in turn could lead to a shift towards a more interdependent self-construal. However, Reddish et al. (2013) did not find an effect of synchrony on interdependent self-

SYNCHRONY INCREASES PROSOCIALITY

construal, and in our data, attention directed towards others was poorly correlated with the tendency to help or not. Another related idea is that as the creation of synchrony is a cooperative task, synchrony may prime cooperativeness in general or accentuate cooperative norms. But again, perceived cooperation was poorly correlated with the tendency to help or not so this possibility is not well supported by our data. A further possibility is based on Fessler and Holbrook's (2014) finding that synchrony diminishes perceived formidability of an opponent. This effect could be driven by feelings of collective empowerment produced by synchrony. Such empowerment may lead participants to feel that they have more resources at their disposal and so increases generosity even to non-threatening out-group members. Further possibilities likely exist for which only further experimentation can empirically verify.

A notable limitation of our study is that the synchrony conditions differed across a number of other key factors. Although the synchrony manipulation was a better predictor than these control variables based on the regression analyses, perceived cooperation and attention still explained a significant proportion of the variance of self-reported bonding with co-performers and entitativity (whilst controlling for the other variables). This may raise questions about how effective our manipulation was in isolating synchrony *per se* as the critical factor in producing the effects we found. Although it may be possible that future studies are able to manipulate synchrony in other ways to help keep such factors as attention to others, perceived success etc. constant across conditions, it is likely that the social effects of synchrony are produced by the amalgamation of these factors. In addition to the matching of behaviours in time (i.e., the behavioural output that we label as synchrony), it is possible that factors involved both in the production of synchrony and how the synchrony is interpreted also influence prosociality – factors such as the shared intention to act together, careful attention directed towards others, the prediction of others' actions, and a cue for

SYNCHRONY INCREASES PROSOCIALITY

successful cooperation. In the context of our experiment, these factors together may have boosted entitativity and in turn bonded individuals to the performance group (Launay, 2015).

In conclusion, we found that the prosocial effect of synchrony extends beyond the performance group and appears to lead to generalized prosociality, even to out-group members. In accordance with previous studies, we also found that synchrony boosts bonding within the performance group, in part by boosting feelings of group entitativity. Although we are cautious about the generalizability of these results across various intergroup contexts, they none the less suggest that collective synchrony has the potential to bond large groups together, even if group members do not perform together. Moreover, they could suggest a role for synchrony in increasing cooperation between groups. Singing and dancing together may not just be a fun past-time, but may be able to play a role in making the world a nicer place to live.

SYNCHRONY INCREASES PROSOCIALITY

References

- Atran, S., & Ginges, J. (2012). Religious and Sacred Imperatives in Human Conflict. *Science*, 336(6083), 855–857. doi:10.1126/science.1216902
- Cirelli, L. K., Einarson, K. M., & Trainor, L. J. (2014). Interpersonal synchrony increases prosocial behavior in infants. *Developmental Science*, 17(6), 1003–1011. doi:10.1111/desc.12193
- Cirelli, L. K., Wan, S. J., & Trainor, L. J. (2014). Fourteen-month-old infants use interpersonal synchrony as a cue to direct helpfulness. *Phil. Trans. R. Soc. B*, 369(1658), 20130400. doi:10.1098/rstb.2013.0400
- Dickert, S., Kleber, J., Peters, E., & Slovic, P. (2011). Numeracy as a precursor to pro-social behavior: The impact of numeracy and presentation format on the cognitive mechanisms underlying donation decisions. *Judgment and Decision Making*, 6(7), 638–650.
- Dickert, S., Sagara, N., & Slovic, P. (2011). Affective motivations to help others: A two-stage model of donation decisions. *Journal of Behavioral Decision Making*, 24(4), 361–376. doi:10.1002/bdm.697
- Dunham, Y., Baron, A., & Banaji, M. R. (2008). The development of implicit intergroup cognition. *Trends in Cognitive Sciences*, 12(7), 248–253. doi:10.1016/j.tics.2008.04.006
- Durkheim, E. (1965). *The elementary forms of the religious life* (J. W. Swain, Trans.). New York: Free Press. (Original work published 1915). Retrieved from <http://www.archive.org/stream/elementaryformso00durk#page/n1/mode/2up>
- Ehrenreich, B. (2006). *Dancing in the streets: A history of collective joy*. New York: Metropolitan.
- Fessler, D. M. T., & Holbrook, C. (2014). Marching into battle: synchronized walking diminishes the conceptualized formidability of an antagonist in men. *Biology Letters*, 10(8), 20140592. doi:10.1098/rsbl.2014.0592

SYNCHRONY INCREASES PROSOCIALITY

- Fischer, R., Callander, R., Reddish, P., & Bulbulia, J. (2013). How do rituals affect cooperation? *Human Nature*, *24*(2), 115–125. doi:10.1007/s12110-013-9167-y
- Gómez, A., Brooks, M. L., Buhrmester, M. D., Vázquez, A., Jetten, J., & Swann, W. B. (2011). On the nature of identity fusion: insights into the construct and a new measure. *Journal of Personality and Social Psychology*, *100*(5), 918–33. doi:10.1037/a0022642
- Haidt, J., Seder, J. P., & Kesebir, S. (2008). Hive psychology, happiness, and public policy. *Journal of Legal Studies*, *37*, S133–S156. doi:10.1086/529447
- Hayes, A. F. (2013). *Introduction to mediation, moderation, and conditional process analysis: A regression-based approach*. New York: Guilford Press.
- Hewstone, M., Rubin, M., & Willis, H. (2002). Intergroup Bias. *Annual Review of Psychology*, *53*, 575–604. doi:10.1146/annurev.psych.53.100901.135109
- Hopkins, N., Reicher, S., Harrison, K., Cassidy, C., Bull, R., & Levine, M. (2007). Helping to improve the group stereotype: On the strategic dimension of prosocial behavior. *Personality and Social Psychology Bulletin*, *33*(6), 776–788. doi:10.1177/0146167207301023
- Hove, M. J., & Risen, J. L. (2009). It's all in the timing: Interpersonal synchrony increases affiliation. *Social Cognition*, *27*(6), 949–960. doi:10.1521/soco.2009.27.6.949
- Kahneman, D. (2003). A perspective on judgment and choice: mapping bounded rationality. *American Psychologist*, *58*(9), 697–720. doi:10.1037/0003-066X.58.9.697
- Kirschner, S., & Tomasello, M. (2010). Joint music making promotes prosocial behavior in 4-year-old children. *Evolution and Human Behavior*, *31*, 354–364. doi:10.1016/j.evolhumbehav.2010.04.004
- Krátký, J., McGraw, J. J., Xygalatas, D., Mitkidis, P., & Reddish, P. (2016). It depends who is watching you: 3-D agent cues increase fairness. *PLoS ONE*, *11*(2), 1–11. doi:10.1371/journal.pone.0148845

SYNCHRONY INCREASES PROSOCIALITY

Lachenbruch, P. A. (2001). Power and sample size requirements for two-part models.

Statistics in Medicine, 20(8), 1235–1238. doi:10.1002/sim.812

Launay, J. (2012). *The attribution of agency to sound influences associated motor activity, synchronisation and affiliation*. (Unpublished doctoral dissertation). MARCS Institute, University of Western Sydney.

Launay, J. (2015). Music as a technology for social bonding: Comment on “Music, empathy, and cultural understanding” by E. Clarke et al. *Physics of Life Reviews*, 15, 94–95. doi:10.1016/j.plrev.2015.10.004

Launay, J., Dean, R. T., & Bailes, F. (2014). Synchronising movements with the sounds of a virtual partner enhances partner likeability. *Cognitive Processing*. doi:10.1007/s10339-014-0618-0

Macrae, C. N., Duffy, O. K., Miles, L. K., & Lawrence, J. (2008). A case of hand waving: Action synchrony and person perception. *Cognition*, 109(1), 152–156. doi:10.1016/j.cognition.2008.07.007

Mael, F., & Ashforth, B. E. (1992). Alumni and their alma mater : A partial test of the reformulated model of organizational identification. *Journal of Organizational Behavior*, 13, 103–123.

Markus, H. R., & Kitayama, S. (1991). Culture and the self - implications for cognition, emotion, and motivation. *Psychological Review*, 98(2), 224–253.

McNeill, W. H. (1995). *Keeping together in time: Dance and drill in human history*. Cambridge, MA: Harvard University Press.

Olivola, C. Y., & Shafir, E. (2013). The Martyrdom Effect : When Pain and Effort Increase Prosocial Contributions. *Journal of Behavioral Decision Making*, 26(1), 91–105. doi:10.1002/bdm

Pearce, E., Launay, J., van Duijn, M., Rotkirch, A., & Dunbar, R. I. M. (2016). Singing

SYNCHRONY INCREASES PROSOCIALITY

- together or apart: The effect of competitive and cooperative singing on social bonding within and between sub-groups of a University Fraternity. *Psychology of Music*, 1–19. doi:10.1177/0305735616636208
- Rabinowitch, T. C., & Knafo-Noam, A. (2015). Synchronous rhythmic interaction enhances children's perceived similarity and closeness towards each other. *PLoS ONE*, 10(4), 1–10. doi:10.1371/journal.pone.0120878
- Reddish, P., Bulbulia, J., & Fischer, R. (2014). Does synchrony promote generalized prosociality? *Religion, Brain and Behavior*, 4(1), 3–19. doi:10.1080/2153599X.2013.764545
- Reddish, P., Fischer, R., & Bulbulia, J. (2013). Let's dance together : Synchrony, shared intentionality and cooperation. *PloS One*, 8(8). doi:10.1371/journal.pone.0071182
- Swann, W. B., Gomez, A., Seyle, D. C., Morales, J. F., & Huici, C. (2009). Identity fusion: The interplay of personal and social identities in extreme group behavior. *Journal of Personality and Social Psychology*, 96(5), 995–1011. doi:10.1037/a0013668
- Swann, W. B., Jetten, J., Gómez, A., Whitehouse, H., & Bastian, B. (2012). When group membership gets personal: a theory of identity fusion. *Psychological Review*, 119(3), 441–56. doi:10.1037/a0028589
- Tarr, B., Launay, J., Cohen, E., & Dunbar, R. I. . (2015). Synchrony and exertion during dance independently raise pain threshold and encourage social bonding. *Biology Letters*, 84(10), 351. doi:10.1098/rsbl.2015.0767
- Tunçgenç, B., & Cohen, E. (2016). Movement Synchrony Forges Social Bonds Across Group Divides. *Frontiers in Psychology*, 7, 782. doi:10.3389/fpsyg.2016.00782
- Tunçgenç, B., Cohen, E., & Fawcett, C. (2015). Rock With Me: The Role of Movement Synchrony in Infants' Social and Nonsocial Choices. *Child Development*, 86(3), 976–984. doi:10.1111/cdev.12354

SYNCHRONY INCREASES PROSOCIALITY

- Valdesolo, P., & DeSteno, D. (2011). Synchrony and the social tuning of compassion. *Emotion, 11*(2), 262–266. doi:10.1037/a0021302
- Waytz, A., Epley, N., & Cacioppo, J. T. (2010). Social cognition unbound: Insights into anthropomorphism and dehumanization. *Current Directions in Psychological Science, 19*(1), 58–62. doi:10.1177/0963721409359302
- Wiltermuth, S. S. (2012a). Synchronous activity boosts compliance with requests to aggress. *Journal of Experimental Social Psychology, 48*(1), 453–456. doi:10.1016/j.jesp.2011.10.007
- Wiltermuth, S. S. (2012b). Synchrony and destructive obedience. *Social Influence, 37*–41. doi:10.1080/15534510.2012.658653
- Wiltermuth, S. S., & Heath, C. (2009). Synchrony and cooperation. *Psychological Science, 20*(1), 1–5. doi:10.1111/j.1467-9280.2008.02253.x
- Wolf, W., Launay, J., & Dunbar, R. I. M. (2016). Joint attention, shared goals, and social bonding. *British Journal of Psychology, 107*(2), 322–337. doi:10.1111/bjop.12144
- Woolhouse, M. H., & Lai, R. (2014). Traces across the body: influence of music-dance synchrony on the observation of dance. *Frontiers in Human Neuroscience, 8*, 965. doi:10.3389/fnhum.2014.00965
- Woolhouse, M. H., Tidhar, D., & Cross, I. (2016). Effects on inter-personal memory of dancing in time with others. *Frontiers in Psychology, 7*, 167. doi:10.3389/fpsyg.2016.00167

SYNCHRONY INCREASES PROSOCIALITY

Footnotes

¹There were 22 groups of 3 and 21 groups of 4.

²Two additional pictures were included at the start of the scale where the circles were separated at different distances to help reduce any positive skew when using the scale with groups of strangers (as per Reddish et al., 2013).

³Cronbach α without the similarity item was .91.

⁴Only the dichotomous helping variable was used as it was these data that an effect of our manipulation was found.

SYNCHRONY INCREASES PROSOCIALITY

Table 1

Summary statistics and t-tests for key variables.

	Condition		<i>t</i>	<i>df</i>	<i>p</i>	<i>Cohen's d</i>
	Synchrony	Asynchrony				
Perceived synchrony	5.22(0.89)	3.18(0.90)	13.83	146	<.001	2.28
Entitativity	5.12(0.99)	3.08 (1.17)	11.45	146	<.001	1.88
Bonding with co-performers	5.10 (1.39)	3.17 (0.96)	8.27	146	<.001	1.63
Extended Fusion to [UNIVERISTY NAME]	3.87(1.11)	3.82(1.28)	0.27	146	.788	0.04
Extended Identification with [UNIVERISTY NAME]	4.60(1.15)	4.58(1.07)	0.13	146	.899	0.02
Perceived cooperation	5.13(1.32)	3.37(1.65)	7.21	146	<.001	1.17
Feelings of success	5.64(0.89)	4.80(1.02)	5.33	145	<.001	0.87
Attention paid to other participants	5.36(1.04)	3.70(1.55)	7.71	146	<.001	1.25
Ability to predict others	5.18(1.25)	3.14(1.66)	8.49	146	<.001	1.38
Task difficulty	1.78(0.96)	2.77(1.49)	-4.89	146	<.001	-0.78
Task enjoyment	4.40(1.40)	4.18(1.40)	0.96	146	.341	0.16
Happy	4.36(1.35)	4.52(1.44)	-0.69	146	.493	-0.11
Relaxed	4.86(1.24)	4.82(1.30)	0.19	146	.848	0.03
Energetic	4.34(1.47)	4.20(1.35)	0.61	146	.546	0.10

Note: *Reported is the mean with standard deviation in parenthesis.*

SYNCHRONY INCREASES PROSOCIALITY

Table 2

Logistic regression for willingness to help or not.

	B (SE)	Wald	<i>p</i>	Odds ratio	95% CI for Odds Ratio	
					Lower	Upper
Sync	1.11 (0.47)	5.22	.022	3.03	1.17	7.86
Help target	1.12 (0.50)	5.05	.025	3.06	1.15	8.09
Sync X Help target	-1.08 (0.70)	2.38	.123	0.34	0.09	1.34

Note: Model $\chi^2(1) = 8.31, p = .040$.

Sync = Synchrony manipulation

SYNCHRONY INCREASES PROSOCIALITY

Table 3

Summary of a logistic regression and linear regressions with the control variables and the movement manipulation as predictors and the decision to help or not, bonding with co-performers, or entitativity as the dependent variable.

	Dependent variable		
	Help or not (Odds ratio)	Bonding with co-performers (standardised coefficient)	Entitativity (standardised coefficient)
Synchrony manipulation	2.85	.30**	.34**
Help Target	2.57		
Synchrony manipulation X Help Target	0.41		
Cooperation	0.90	.21*	.34**
Success	0.69	-.03	.06
Attention	1.00	.23**	.17**
Prediction	1.15	.04	.11
Difficulty	0.85	-.10	-.01

Note: $p < .05$, ** $p < .01$

SYNCHRONY INCREASES PROSOCIALITY

1 Table 4

2 *Correlation coefficients between the key variables.*

	1	2	3	4	5	6	7	8	9	10	11
1. Help - Yes/No											
2. Help - Time	.71**										
3. Extended Fusion	.11	.16									
4. Extended Identification	.09	.15	.78**								
5. Bonding with co-performers	.15	.11	.09	.02							
6. Entitativity	.18*	.18*	.19*	.06	.69**						
7. Perceived synchrony	.14	.14	.12	.03	.58**	.81**					
8. Cooperation	.02	.03	.26**	.13	.50**	.68**	.61**				
9. Attention	.09	.12	.12	.13	.51**	.60**	.55**	.52**			
10. Prediction	.13	.08	.15	.08	.47**	.62**	.60**	.56**	.56**		
11. Success	-.07	-.07	.15	.11	.30**	.44**	.43**	.47**	.25**	.43**	
12. Difficulty	-.09	-.03	-.09	-.06	-.31**	-.31**	-.32**	-.25**	-.14	-.31**	-.37**

3 Note: * $p < .05$, ** $p < .01$.

SYNCHRONY INCREASES PROSOCIALITY

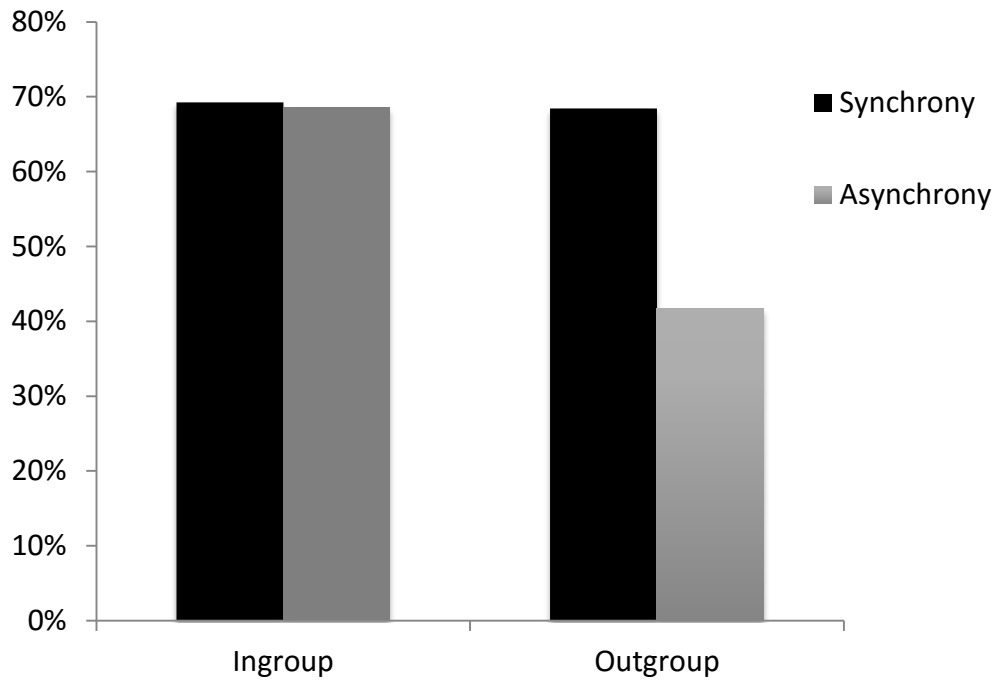


Figure 1. Percentage of participants in each condition that were willing to help.

SYNCHRONY INCREASES PROSOCIALITY

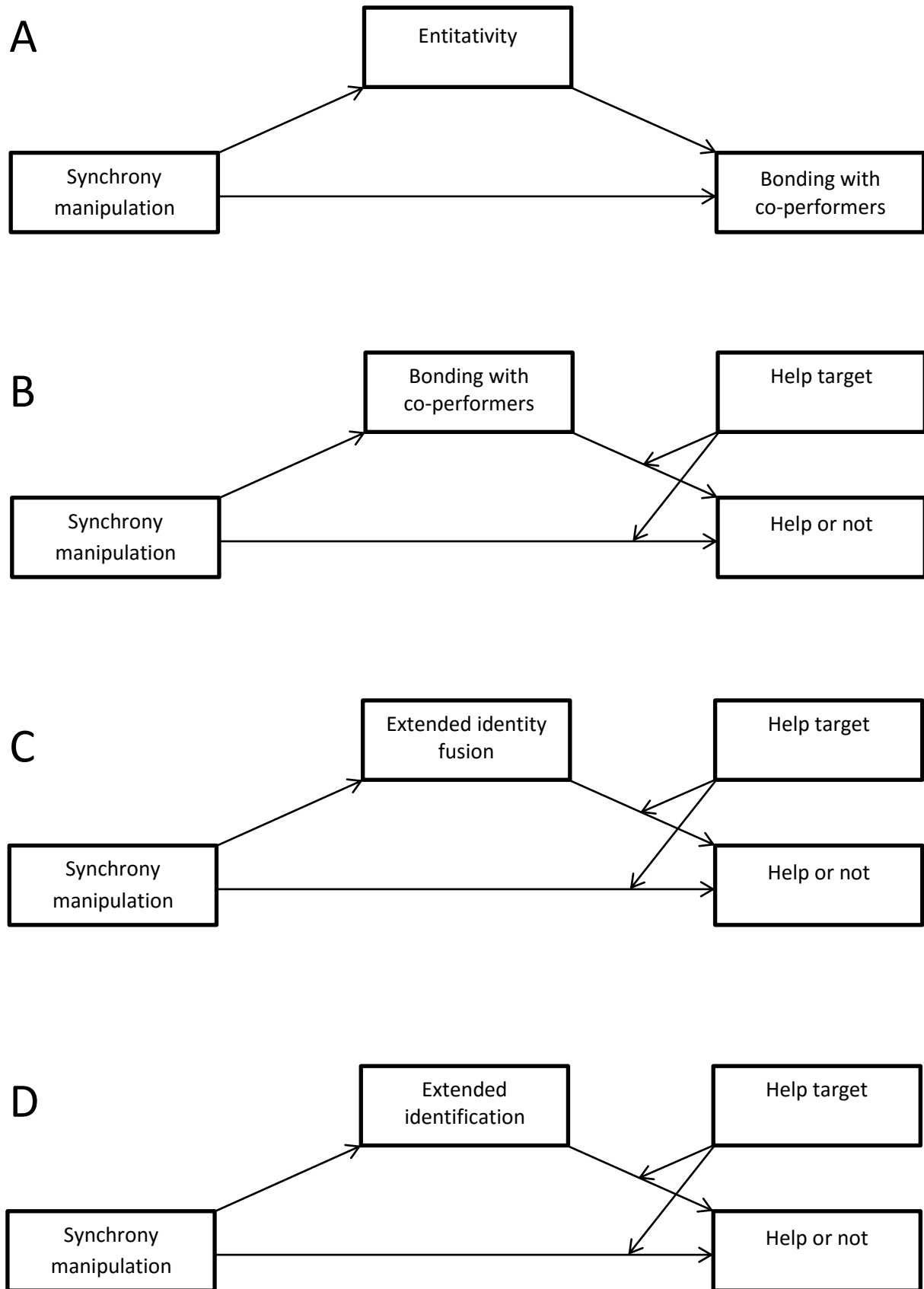


Figure 2. Conceptual diagrams of the estimated mediation models.