



**QUEEN'S
UNIVERSITY
BELFAST**

Spectra of Definite Type in Waveguide Models

Lotoreichik, V., & Siegl, P. (2017). Spectra of Definite Type in Waveguide Models. *Proceedings of the American Mathematical Society*, 145(3), 1231-1246. <https://doi.org/10.1090/proc/13316>

Published in:
Proceedings of the American Mathematical Society

Document Version:
Peer reviewed version

Queen's University Belfast - Research Portal:
[Link to publication record in Queen's University Belfast Research Portal](#)

Publisher rights
© 2016 American Mathematical Society.
This work is made available online in accordance with the publisher's policies. Please refer to any applicable terms of use of the publisher.

General rights
Copyright for the publications made accessible via the Queen's University Belfast Research Portal is retained by the author(s) and / or other copyright owners and it is a condition of accessing these publications that users recognise and abide by the legal requirements associated with these rights.

Take down policy
The Research Portal is Queen's institutional repository that provides access to Queen's research output. Every effort has been made to ensure that content in the Research Portal does not infringe any person's rights, or applicable UK laws. If you discover content in the Research Portal that you believe breaches copyright or violates any law, please contact openaccess@qub.ac.uk.

SPECTRA OF DEFINITE TYPE IN WAVEGUIDE MODELS

VLADIMIR LOTOREICHIK AND PETR SIEGL

ABSTRACT. We develop an abstract method to identify spectral points of definite type in the spectrum of the operator $T_1 \otimes I_2 + I_1 \otimes T_2$, applicable in particular for non-self-adjoint waveguide type operators with symmetries. Using the remarkable properties of the spectral points of definite type, we obtain new results on realness of weakly coupled bound states and of low lying essential spectrum in the \mathcal{PT} -symmetric waveguide. Moreover, we show that the pseudospectrum has a tame behavior near the low lying essential spectrum and exclude the accumulation of non-real eigenvalues to this part of the essential spectrum. The advantage of our approach is particularly visible when the resolvent of the unperturbed operator cannot be explicitly expressed and most of the mentioned conclusions are extremely hard to prove by direct methods.

1. INTRODUCTION

Spectral points of a closed non-self-adjoint operator $T \in \mathcal{C}(\mathcal{H})$ in a Hilbert space \mathcal{H} may have special properties if T possesses a symmetry like J -self-adjointness, *i.e.* there is a bounded symmetric *linear involution* J such that

$$T = JT^*J. \quad (1.1)$$

An isolated eigenvalue λ of a J -self-adjoint operator T is of definite type, namely, λ is of positive (resp., negative) type if for all $0 \neq f \in \ker(T - \lambda)$

$$(Jf, f) > 0, \quad (\text{resp., } (Jf, f) < 0), \quad (1.2)$$

see *e.g.* [9, 15, 16]. Eigenvalues of definite type of a J -self-adjoint operator are remarkable since they are *real* and the type is *stable* with respect to “small” J -symmetric perturbations. The notion of spectral points of definite type can be further generalized for λ from the *approximate point spectrum* $\sigma_{\text{app}}(T)$, *cf.* [4, 9, 15, 16, 20], requiring that a condition similar to (1.2) is satisfied for all approximate eigensequences for $\lambda \in \sigma_{\text{app}}(T)$. The realness of such spectral points, their stability with respect to perturbations and resolvent estimates were proved in [2, 4, 20, 23].

Here we identify spectral points of definite type in tensor product type operators

$$T_1 \otimes I_2 + I_1 \otimes T_2, \quad (1.3)$$

Received by the editors February 28, 2016.

2010 *Mathematics Subject Classification.* 47A55, 47B50, 81Q12.

Key words and phrases. spectral points of definite and of type π , weakly coupled bound states, perturbations of essential spectrum, pseudospectrum, \mathcal{PT} -symmetric waveguide.

The authors thank J. Behrndt for drawing their attention to definite type spectra, M. Tater for numerical examples and C. Trunk for discussions. PS is supported by SNSF Ambizione project PZ00P2_154786, VL by the Austrian Science Fund (FWF): Project P 25162-N26 and the Czech Science Foundation: Project 14-06818S. Both the authors acknowledge the support by the Austria-Czech Republic co-operation grant CZ01/2013.

when certain information on T_1 and T_2 is given. As demonstrated in an application, the remarkable properties of these spectral points enable us to draw spectral conclusions on perturbations of multi-dimensional non-self-adjoint differential operators with non-empty essential spectrum and without the tensor product structure (the latter is usually destroyed when boundary conditions or potentials are perturbed).

In the simplest setting of \mathcal{PT} -symmetric waveguide (*i.e.* without potentials), see [7, 6, 14, 19], we prove that the lowest part of the essential spectrum of the unperturbed waveguide is of positive type; *cf.* Theorem 3.6 and Figure 3.2. Intuitively, the essential spectrum consists of layers $[\mu_k, \infty)$ of definite type, where μ_k are the eigenvalues of the transversal operator, however, the overlaps of layers spoil the definiteness and only $[\mu_0, \mu_1)$ remains of definite type. As a consequence, we receive for “small” or “compact” \mathcal{PT} -symmetric perturbations that:

- (i) eigenvalues emerging from the lowest threshold are real;
- (ii) essential spectrum in a neighborhood of μ_0 may change, but it remains real;
- (iii) accumulation of non-real eigenvalues to real essential spectrum in a neighborhood of μ_0 is excluded;
- (iv) *pseudospectra* in a neighborhood of μ_0 have a normal tame behavior;

for precise claims see (3.9) and Theorems 3.8, 3.10. It appears that only (i) and moreover only in the simplest setting has been known, *cf.* [7, 19]. As our approach does not rely on an explicit knowledge of Green’s function for the unperturbed operator, we obtain analogous conclusions without additional efforts also if rather general regular potentials are included (in which case the picture of definite type spectra may be much richer, see Figure 3.3). Finally, notice also that the stability results do not apply if the spectrum is not of definite type; see Remark 3.9.

1.1. Notations and basic concepts. We denote by \mathcal{H} a Hilbert space with the scalar product (\cdot, \cdot) (linear in the first entry) and the corresponding norm $\|\cdot\|$. $\mathcal{B}(\mathcal{H})$ and $\mathcal{C}(\mathcal{H})$ stand for bounded (everywhere defined) and densely defined closed linear operators in \mathcal{H} , respectively. We denote by $\sigma(T)$, $\sigma_{\text{app}}(T)$ and $\rho(T)$ the spectrum, approximate point spectrum and resolvent set of $T \in \mathcal{C}(\mathcal{H})$, respectively. The ε -*pseudospectrum* $\sigma_\varepsilon(T)$ of $T \in \mathcal{C}(\mathcal{H})$ reads

$$\sigma_\varepsilon(T) := \{\lambda \in \rho(T) : \|(T - \lambda)^{-1}\| > \varepsilon^{-1}\} \cup \sigma(T).$$

A bounded symmetric involution J can be used to define a new, typically indefinite, inner product $[\cdot, \cdot]_J := (J\cdot, \cdot)$ in \mathcal{H} and a Krein space $(\mathcal{H}, [\cdot, \cdot]_J)$; see *e.g.* [1, §I.3]. A J -self-adjoint operator T , *i.e.* T satisfying (1.1), is in fact a self-adjoint operator in $(\mathcal{H}, [\cdot, \cdot]_J)$, nevertheless, we deliberately avoid the Krein space terminology here.

Finally, we recall the concept of spectra of definite type.

Definition 1.1. For $T \in \mathcal{C}(\mathcal{H})$ a point $\lambda \in \sigma_{\text{app}}(T)$ is a spectral point of positive (negative) type (with respect to J) if every approximate eigensequence $\{f_n\}_n$ for T corresponding to λ satisfies

$$\liminf_{n \rightarrow \infty} (Jf_n, f_n) > 0, \quad (\text{resp., } \limsup_{n \rightarrow \infty} (Jf_n, f_n) < 0).$$

The set of all spectral points of T of positive (negative) type is denoted by $\sigma_{++}(T)$ (*resp.*, $\sigma_{--}(T)$). The union of spectral points of positive and negative type are spectral points of definite type; the complement of the latter set in the approximate point spectrum (*i.e.* spectral points of not definite type) is denoted by

$$\sigma_{00}(T) := \sigma_{\text{app}}(T) \setminus (\sigma_{++}(T) \cup \sigma_{--}(T)).$$

2. SPECTRA OF DEFINITE TYPE AND TENSOR PRODUCTS

We show that, based on certain information on T_1 and T_2 , some parts in the spectrum of (1.3) are or are not of definite type. We denote by \otimes (resp., by \odot) tensor (resp., pre-tensor) products of Hilbert spaces and operators; see *e.g.* [5, §2.4, 4.5, 5.7] or [22, §III.7.5] for details. Our basic assumption reads as follows.

Assumption 2.1. *Let $T_k \in \mathcal{C}(\mathcal{H}_k)$, $k = 1, 2$, be m -sectorial in $(\mathcal{H}_k, (\cdot, \cdot)_k)$ and let*

$$S := T_1 \odot I_2 + I_1 \odot T_2, \quad \mathbf{S} := \overline{S}. \quad (2.1)$$

Moreover, let J_k be bounded symmetric involutions in \mathcal{H}_k and let $J := J_1 \otimes J_2$.

Notice that S is indeed closable and the closure \mathbf{S} is m -sectorial in $\mathcal{H}_1 \otimes \mathcal{H}_2$ by [21, §XIII.9, Cor. 2]. In the sequel, the spectral points of positive and negative type are defined w.r.t. J_k for operators acting in \mathcal{H}_k , $k = 1, 2$, and w.r.t. $J := J_1 \otimes J_2$ for operators acting in $\mathcal{H}_1 \otimes \mathcal{H}_2$.

The “negative” results, *i.e.* identification of spectral points of \mathbf{S} that cannot be of definite type, are derived directly from the definition and the tensor-like structure of \mathbf{S} . To express claims in a more compact form, we define subsets of \mathbb{C}

$$\begin{aligned} \mathcal{M}_+ &:= (\sigma_{++}(T_1) + \sigma_{++}(T_2)) \cup (\sigma_{--}(T_1) + \sigma_{--}(T_2)), \\ \mathcal{M}_- &:= (\sigma_{++}(T_1) + \sigma_{--}(T_2)) \cup (\sigma_{--}(T_1) + \sigma_{++}(T_2)), \\ \mathcal{M}_0 &:= (\sigma_{\text{app}}(T_1) + \sigma_{\text{app}}(T_2)) \setminus (\mathcal{M}_+ \cup \mathcal{M}_-). \end{aligned} \quad (2.2)$$

Proposition 2.2. *Let Assumption 2.1 hold and \mathcal{M}_\pm , \mathcal{M}_0 be as in (2.2). Then*

$$\mathcal{M}_0 \cup (\mathcal{M}_+ \cap \mathcal{M}_-) \subset \sigma_{00}(\mathbf{S}), \quad \mathcal{M}_+ \cap \sigma_{--}(\mathbf{S}) = \emptyset, \quad \mathcal{M}_- \cap \sigma_{++}(\mathbf{S}) = \emptyset.$$

Proof. We prove only the first inclusion and only for $\lambda = \lambda_1 + \lambda_2 \in \mathcal{M}_0 \cup (\mathcal{M}_+ \cap \mathcal{M}_-)$ with $\lambda_1 \in \sigma_{00}(T_1)$ and $\lambda_2 \in \sigma_{++}(T_2)$; the rest is analogous. Since $\lambda_1 \in \sigma_{00}(T_1)$, there are two approximate eigensequences $\{f_n\}_n, \{g_n\}_n \subset \text{dom } T_1$ for T_1 corresponding to λ_1 such that $\lim_{n \rightarrow \infty} (J_1 f_n, f_n)_1 \leq 0$ and $\lim_{n \rightarrow \infty} (J_1 g_n, g_n)_1 \geq 0$. Similarly for $\lambda_2 \in \sigma_{++}(T_2)$, there is an approximate eigensequence $\{h_n\}_n \subset \text{dom } T_2$ for T_2 corresponding to λ_2 such that $\lim_{n \rightarrow \infty} (J_2 h_n, h_n)_2 > 0$. It is easy to verify that $\{f_n \otimes h_n\}_n \subset \text{dom } \mathbf{S}$ and $\{g_n \otimes h_n\}_n \subset \text{dom } \mathbf{S}$ are approximate eigensequences for \mathbf{S} corresponding to $\lambda = \lambda_1 + \lambda_2$. Thus, we get $\lambda \in \sigma_{00}(\mathbf{S})$ since

$$\begin{aligned} \lim_{n \rightarrow \infty} (J(f_n \otimes h_n), f_n \otimes h_n) &= \lim_{n \rightarrow \infty} (J_1 f_n, f_n)_1 (J_2 h_n, h_n)_2 \leq 0, \\ \lim_{n \rightarrow \infty} (J(g_n \otimes h_n), g_n \otimes h_n) &= \lim_{n \rightarrow \infty} (J_1 g_n, g_n)_1 (J_2 h_n, h_n)_2 \geq 0. \quad \square \end{aligned}$$

The second assumption is essential for passing to “positive” results.

Assumption 2.3. *Let Assumption 2.1 hold and let there exist projections P_k^\pm in \mathcal{H}_k and constants $\varkappa_k^\pm > 0$, $k = 1, 2$, such that:*

- (i) $P_k^\mu P_k^\nu = \delta_{\mu\nu} P_k^\mu$ for $\mu, \nu \in \{+, -\}$, $k = 1, 2$;
- (ii) $T_k P_k^\mu \supset P_k^\mu T_k$ for $\mu \in \{+, -\}$, $k = 1, 2$;
- (iii) for all $f_k \in \mathcal{H}_k^\pm := P_k^\pm \mathcal{H}_k$, we have

$$\pm (J_k f_k, f_k)_k \geq \varkappa_k^\pm \|f_k\|_k^2, \quad k = 1, 2. \quad (2.3)$$

Several remarks on Assumption 2.3 are given below. In what follows we always take $k = 1, 2$ without repeating it everywhere. The concept of a uniformly definite subspace (of a Krein space) implicitly employed in Assumption 2.3 (iii) is rather

standard; see *e.g.* [1, §I.5]. Note that \mathcal{H}_k^\pm are reducing subspaces for the operators T_k ; *cf.* [10, §III.5.6]. Finding projections P_k^\pm is simple for isolated eigenvalues of T_k ; the Riesz projections corresponding to a finite number of isolated eigenvalues of finite multiplicity and of the same definite type satisfy the assumption; this is used in our application, see Theorem 3.6 and its proof. In a more general case, P_k^\pm can be obtained from [3, Thm. 2.7] or [20, Thm. 5.2], where the existence of a local spectral function is proved. In detail, if $T \in \mathcal{C}(\mathcal{H})$ is J -self-adjoint and $[a, b] \cap \sigma_{\text{app}}(T) \subset \sigma_{\mu\mu}(T)$, $\mu \in \{+, -\}$, then for all bounded subintervals Δ of (a, b) with $\bar{\Delta} \subset (a, b)$, there is a J -self-adjoint projection $E(\Delta)$ such that $TE(\Delta) \supset E(\Delta)T$ and $\pm(Jf, f) \geq \varkappa^\pm \|f\|^2$ for all $f \in E(\Delta)\mathcal{H}$ with some $\varkappa^\mu > 0$.

The idea of Assumption 2.3 is to extract “++” and “--” parts of T_k . Nevertheless, we emphasize that we do not need to have spectral projections on the entire $\sigma_{++}(T_k)$ or $\sigma_{--}(T_k)$ (which allows for avoiding to require *e.g.* a Riesz basis property of eigenvectors for T_k with purely discrete spectrum).

With P_k^μ from Assumption 2.3, define the projections $P_k^r := I_{\mathcal{H}} - P_k^+ - P_k^-$ and subspaces $\mathcal{H}_k^r := P_k^r \mathcal{H}$. The two families of projections $\{P_k^\mu, P_k^r\}$ satisfy

$$P_k^\mu P_k^\nu = \delta_{\mu\nu} P_k^\mu, \quad \mu, \nu \in \mathcal{I} := \{+, -, r\}, \quad k = 1, 2, \quad (2.4)$$

and we get the direct sum decompositions of \mathcal{H}_k ; $\mathcal{H}_k = \mathcal{H}_k^+ \dot{+} \mathcal{H}_k^- \dot{+} \mathcal{H}_k^r$, *cf.* [10, §III.5.6]. By Assumption 2.3 (i)-(ii) the operators

$$T_k^\mu u := T_k u \quad \text{dom } T_k^\mu := \text{dom } T_k \cap \mathcal{H}_k^\mu, \quad \mu \in \mathcal{I}, \quad k = 1, 2, \quad (2.5)$$

are closed and following [10, §III.5.6] we end up with the direct sum decomposition

$$T_k = T_k^+ \dot{+} T_k^- \dot{+} T_k^r, \quad k = 1, 2. \quad (2.6)$$

To explain next steps we first prove a simple technical lemma.

Lemma 2.4. *Let $\{P_k\}_{k=1}^n$, $n \in \mathbb{N}$, be a family of projections in \mathcal{H} such that $P_i P_j = \delta_{ij} P_i$ for $i, j \in \{1, 2, \dots, n\}$ and $\sum_{k=1}^n P_k = I_{\mathcal{H}}$. Define the operator $\Theta := \sum_{k=1}^n P_k^* P_k$. Then $\Theta \in \mathcal{B}(\mathcal{H})$, it is uniformly positive and satisfies*

$$\Theta P_j = P_j^* \Theta, \quad j = 1, 2, \dots, n. \quad (2.7)$$

Proof. Clearly, $\Theta \in \mathcal{B}(\mathcal{H})$. Since $f = \sum_{k=1}^n P_k f$, we get

$$(\Theta f, f) = \sum_{k=1}^n \|P_k f\|^2 \geq \frac{1}{n} \|f\|^2, \quad (2.8)$$

where we use Cauchy-Schwarz inequality in the second step, hence, Θ is uniformly positive. Using $P_i P_j = \delta_{ij} P_i$ and $P_i^* P_j^* = \delta_{ij} P_i^*$, we obtain (2.7). \square

Using Lemma 2.4, we construct uniformly positive bounded operators $\Theta_k := \sum_{\mu \in \mathcal{I}} (P_k^\mu)^* P_k^\mu$. Hence, the scalar products $(\cdot, \cdot)_{\Theta_k} := (\Theta_k \cdot, \cdot)_k$ are well-defined on \mathcal{H}_k and topologically equivalent to $(\cdot, \cdot)_k$. Due to commutation relations (2.4), the subspaces \mathcal{H}_k^μ , $\mu \in \mathcal{I}$, are mutually orthogonal w.r.t. $(\cdot, \cdot)_{\Theta_k}$. Thus, the decompositions (2.6) are orthogonal in $(\cdot, \cdot)_{\Theta_k}$, *i.e.* $T = T^+ \oplus_{\Theta_k} T^- \oplus_{\Theta_k} T^r$, and $\sigma(T_k) = \sigma(T_k^+) \cup \sigma(T_k^-) \cup \sigma(T_k^r)$.

Consider now $\mathcal{H} := \mathcal{H}_1 \otimes \mathcal{H}_2$ endowed with the natural scalar product $(\cdot, \cdot)_{\mathcal{H}}$ induced from the scalar products $(\cdot, \cdot)_k$. By Lemma 2.4 and [5, Thm. 5.7.4]

$$\Phi := \Theta_1 \otimes \Theta_2 \quad (2.9)$$

is bounded and uniformly positive in \mathcal{H} . Thus, the scalar product

$$(\cdot, \cdot)_\Phi := (\Phi \cdot, \cdot) \quad (2.10)$$

is well-defined on \mathcal{H} and topologically equivalent to the initial product (\cdot, \cdot) .

Define the subspaces $\mathcal{H}^{\mu\nu} := \mathcal{H}_1^\mu \otimes \mathcal{H}_2^\nu$, $\mu, \nu \in \mathcal{I}$ and observe that $\mathcal{H} = \bigoplus_{\Phi}^{\mu, \nu \in \mathcal{I}} \mathcal{H}^{\mu\nu}$. We introduce operators (the closures are m-sectorial in respective Hilbert spaces)

$$S^{\mu\nu} := T_1^\mu \circ I_2^\nu + I_1^\mu \circ T_2^\nu, \quad S^{\mu\nu} := \overline{S^{\mu\nu}}, \quad \mu, \nu \in \mathcal{I}, \quad (2.11)$$

and also some specific orthogonal sums

$$\begin{aligned} S^+ &:= S^{++} \oplus_\Phi S^{--}, & S^- &:= S^{+-} \oplus_\Phi S^{-+} \\ S^r &:= S^{r+} \oplus_\Phi S^{r-} \oplus_\Phi S^{rr} \oplus_\Phi S^{r+} \oplus_\Phi S^{-r}. \end{aligned} \quad (2.12)$$

Next, using the tensor product rules (see *e.g.* [5, Prop. 4.5.6]) we obtain that S in (2.1) can be decomposed as $S = \bigoplus_{\Phi}^{\mu, \nu \in \mathcal{I}} S^{\mu\nu}$ and taking the closures we get

$$S = \overline{S} = \bigoplus_{\Phi}^{\mu, \nu \in \mathcal{I}} S^{\mu\nu}. \quad (2.13)$$

From Assumption 2.3 and with $J = J_1 \otimes J_2$, we verify that for $\mu \in \{+, -\}$

$$(Jf, f) \geq \varkappa_1^\mu \varkappa_2^\mu \|f\|^2, \quad \text{for all } f \in \mathcal{H}^{\mu\mu}, \quad (2.14)$$

and that for $\mu, \nu \in \{+, -\}$, $\mu \neq \nu$,

$$(Jf, f) \leq -\varkappa_1^\mu \varkappa_2^\nu \|f\|^2, \quad \text{for all } f \in \mathcal{H}^{\mu\nu}. \quad (2.15)$$

The following theorem is the key result of this section. We get a slightly sharper result in item (iii) since also the mutual collocations of subspaces \mathcal{H}_k^\pm are used.

Theorem 2.5. *Let Assumption 2.3 hold and let the m-sectorial operators $S^{\mu\nu}$, $\mu, \nu \in \mathcal{I}$, S^μ , $\mu \in \mathcal{I}$, and S be as in (2.11), (2.12) and (2.13), respectively. Let $\sigma_{++}(S)$ and $\sigma_{--}(S)$ be defined w.r.t. $J = J_1 \otimes J_2$. Then for $\mu, \nu \in \{+, -\}$, $\mu \neq \nu$, the following statements hold.*

- (i) $\sigma_{\text{app}}(S^{\mu\mu}) \setminus (\sigma(S^-) \cup \sigma(S^r) \cup \sigma(S^{\nu\nu})) \subset \sigma_{++}(S)$.
- (ii) $\sigma_{\text{app}}(S^{\mu\nu}) \setminus (\sigma(S^+) \cup \sigma(S^r) \cup \sigma(S^{\nu\mu})) \subset \sigma_{--}(S)$.
- (iii) *If, in addition, there exist constants $\varkappa_k^{+-} \geq 0$, for $k = 1, 2$, such that*

$$|(J_k f_k^+, f_k^-)_k| \leq \varkappa_k^{+-} \|f_k^+\|_k \|f_k^-\|_k, \quad \text{for all } f_k^\pm \in \mathcal{H}_k^\pm,$$

and, moreover, that $(\varkappa_1^{+-} \varkappa_2^{+-})^2 < \varkappa_1^+ \varkappa_2^+ \varkappa_1^- \varkappa_2^-$. Then

$$\sigma_{\text{app}}(S^\mu) \setminus (\sigma(S^\nu) \cup \sigma(S^r)) \subset \sigma_{\mu\mu}(S). \quad (2.16)$$

Proof. Let Φ and $(\cdot, \cdot)_\Phi$ be as in (2.9) and (2.10), respectively.

(i) We show the first inclusion ($\mu = +$, $\nu = -$) only, the rest is fully analogous. The decomposition (2.13) can be restructured as

$$S = S^{++} \oplus_\Phi S^0, \quad (2.17)$$

where $S^0 := S^{--} \oplus_\Phi S^- \oplus_\Phi S^r$. Let $\lambda \in \sigma_{\text{app}}(S^{++}) \setminus \sigma(S^0) \subset \sigma_{\text{app}}(S)$. Pick an arbitrary approximate eigensequence $\{f_n\}_n$ for the operator S corresponding to λ . Each f_n can be decomposed uniquely as $f_n = f_n^{++} + f_n^0$ with $f_n^{++} \in \mathcal{H}^{++}$ and $f_n^0 \perp_\Phi \mathcal{H}^{++}$. By the equivalence of $\|\cdot\|$ and $\|\cdot\|_\Phi$, where $\|f\|_\Phi^2 := (f, f)_\Phi$, we get

$$\|(S - \lambda)f_n\|_\Phi \leq M \|(S - \lambda)f_n\| \rightarrow 0 \quad (2.18)$$

with some $M > 0$. Furthermore, the orthogonal decomposition (2.17) gives

$$\|(S - \lambda)f_n\|_\Phi^2 = \|(S^{++} - \lambda)f_n^{++}\|_\Phi^2 + \|(S^0 - \lambda)f_n^0\|_\Phi^2. \quad (2.19)$$

Since $\lambda \in \rho(\mathbf{S}^0)$, there exists $k_\lambda > 0$ such that $\|(\mathbf{S}^0 - \lambda)f_n^0\| \geq k_\lambda \|f_n^0\|$. Thus, using equivalence of the norms ($\|\cdot\|$ and $\|\cdot\|_\Phi$), (2.18), and (2.19), we conclude that $\|f_n^0\| \rightarrow 0$ and hence $\|f_n^{++}\| \rightarrow 1$. Finally, the former and (2.14) (with $\mu = +$) imply that $\lambda \in \sigma_{++}(\mathbf{S})$ since

$$\liminf_{n \rightarrow \infty} (Jf_n, f_n) = \liminf_{n \rightarrow \infty} (Jf_n^{++}, f_n^{++}) \geq \liminf_{n \rightarrow \infty} \varkappa_1^+ \varkappa_2^+ \|f_n^{++}\|^2 = \varkappa_1^+ \varkappa_2^+ > 0.$$

(ii) The proof is analogous to the one of item (i). In the case $\mu = +$ and $\nu = -$ the decomposition (2.13) is restructured as $\mathbf{S} = \mathbf{S}^{+-} \oplus_\Phi \mathbf{S}^0$ where $\mathbf{S}^0 := \mathbf{S}^{-+} \oplus_\Phi \mathbf{S}^+ \oplus_\Phi \mathbf{S}^\Gamma$. The case $\mu = -$ and $\nu = +$ is analogous.

(iii) We follow the lines of the proofs of items (i) and (ii). In the case $\mu = +$ and $\nu = -$ the decomposition in (2.13) is restructured as $\mathbf{S} = \mathbf{S}^+ \oplus_\Phi \mathbf{S}^0$ where $\mathbf{S}^0 = \mathbf{S}^- \oplus_\Phi \mathbf{S}^\Gamma$. A straightforward adaptation of the above arguments shows that any approximate eigensequence $\{f_n\}_n$ for the operator \mathbf{S} corresponding to a point $\lambda \in \sigma_{\text{app}}(\mathbf{S}^+) \setminus \sigma(\mathbf{S}^0)$ can be uniquely decomposed as $f_n = f_n^{++} + f_n^{--} + f_n^0$ with $f_n^{++} \in \mathcal{H}^{++}$, $f_n^{--} \in \mathcal{H}^{--}$ and $f_n^0 \perp_\Phi (\mathcal{H}^{++} \oplus_\Phi \mathcal{H}^{--})$. Analogously, we get $\|f_n^0\| \rightarrow 0$ and $\|f_n^{++} + f_n^{--}\| \rightarrow 1$. Similarly to (2.14) and (2.15) one can derive

$$|(Jf^{++}, f^{--})| \leq \varkappa_1^{+-} \varkappa_2^{+-} \|f^{++}\| \|f^{--}\|, \quad f^{++} \in \mathcal{H}^{++}, \quad f^{--} \in \mathcal{H}^{--}.$$

From the condition $(\varkappa_1^{+-} \varkappa_2^{+-})^2 < \varkappa_1^+ \varkappa_2^+ \varkappa_1^- \varkappa_2^-$, for all small $\delta > 0$, we have $\varkappa(\delta) := [(\varkappa_1^+ \varkappa_2^+ - \delta)(\varkappa_1^- \varkappa_2^- - \delta)]^{1/2} - \varkappa_1^{+-} \varkappa_2^{+-} > 0$. Using (2.14) and Cauchy-Schwarz inequality, we then obtain, for such $\delta > 0$ and $f_n^+ = f_n^{++} + f_n^{--}$, that

$$\begin{aligned} (Jf_n^+, f_n^+) &= (J(f_n^{++} + f_n^{--}), f_n^{++} + f_n^{--}) \\ &\geq \varkappa_1^+ \varkappa_2^+ \|f_n^{++}\|^2 + \varkappa_1^- \varkappa_2^- \|f_n^{--}\|^2 - 2|(Jf_n^{++}, f_n^{--})| \\ &\geq \varkappa_1^+ \varkappa_2^+ \|f_n^{++}\|^2 + \varkappa_1^- \varkappa_2^- \|f_n^{--}\|^2 - 2\varkappa_1^{+-} \varkappa_2^{+-} \|f_n^{++}\| \|f_n^{--}\|, \\ &\geq 2\varkappa(\delta) \|f_n^{++}\| \|f_n^{--}\| + \delta(\|f_n^{++}\|^2 + \|f_n^{--}\|^2) \\ &\geq \delta(\|f_n^{++}\|^2 + \|f_n^{--}\|^2) \geq \frac{\delta}{2} \|f_n^{++} + f_n^{--}\|^2 = \frac{\delta}{2} \|f_n^+\|^2. \end{aligned}$$

Hence, using $\|f_n^0\| \rightarrow 0$ and $\|f_n^+\| \rightarrow 1$, we receive

$$\liminf_{n \rightarrow \infty} (Jf_n, f_n) = \liminf_{n \rightarrow \infty} (Jf_n^+, f_n^+) \geq \frac{\delta}{2} \liminf_{n \rightarrow \infty} \|f_n^+\|^2 = \frac{\delta}{2} > 0.$$

Thus $\lambda \in \sigma_{++}(\mathbf{S})$ and the first inclusion in (2.16) is proven; the rest is analogous. \square

3. APPLICATION: \mathcal{PT} -SYMMETRIC WAVEGUIDES

We investigate the two-dimensional \mathcal{PT} -symmetric waveguide suggested in [7] and studied further in [6, 14, 19]. We view the waveguide as a perturbation of a certain ‘‘unperturbed’’ operator defined in Subsection 3.2, having the tensor product structure (1.3). Based on our abstract machinery from Section 2 and known properties of the transversal one-dimensional operator given in Subsection 3.3, we fully characterize the spectra of definite type for this unperturbed operator in Theorem 3.6. In the proof we deliberately avoid using the Riesz basis property of the eigensystem of the transversal operator $\mathbf{H}_{i\alpha_0}^\parallel$, which is typically not available in other similar problems. Finally, in Subsection 3.5 we apply perturbation results to reveal intervals of definite type spectra for the original (perturbed) operator, not having the convenient tensor product structure, and employ properties of definite type spectra to draw spectral conclusions on the original operator.

3.1. Definition of the waveguide. Let $\mathbb{I} := (-a, a)$, $a \in (0, \infty)$, $\Omega := \mathbb{R} \times \mathbb{I}$ and $\Sigma_{\pm} := \mathbb{R} \times \{\pm a\}$; the latter are the opposite sides of the strip Ω . We denote the inner product in $L^2(\Sigma_{\pm})$ by $(\cdot, \cdot)_{\Sigma_{\pm}}$ and in both $L^2(\Omega)$ and $L^2(\Omega; \mathbb{C}^2)$ by $(\cdot, \cdot)_{\Omega}$.

Let $J_1 := I_{L^2(\mathbb{R})}$ and $J_2 := \mathcal{P}$ where

$$(\mathcal{P}\psi)(y) := \psi(-y), \quad \psi \in L^2(\mathbb{I}). \quad (3.1)$$

Both J_k , $k = 1, 2$, are bounded symmetric involutions; J_1 is uniformly positive and J_2 is indefinite. The tensor product $J = J_1 \otimes J_2$ is easily seen to act as

$$(Ju)(x, y) = u(x, -y), \quad u \in L^2(\Omega). \quad (3.2)$$

The complex conjugation operator on any of the used functional spaces is denoted by $\mathcal{T}\psi := \overline{\psi}$. Further, we introduce the space of bounded \mathcal{PT} -symmetric functions

$$L_{\mathcal{PT}}^{\infty}(\Omega) := \{V \in L^{\infty}(\Omega; \mathbb{C}) : V(x, y) = \overline{V(x, -y)}\}.$$

Definition 3.1. Let $V \in L_{\mathcal{PT}}^{\infty}(\Omega)$ and $\alpha \in L^{\infty}(\mathbb{R}; \mathbb{C})$. The m -sectorial operator $\mathbf{H}_{\alpha, V}^{\Omega}$ in $L^2(\Omega)$ associated to the densely defined, closed, sectorial form

$$H^1(\Omega) \mapsto \|\nabla u\|_{\Omega}^2 + (Vu, u)_{\Omega} + (\alpha u|_{\Sigma_+}, u|_{\Sigma_+})_{\Sigma_+} + (\overline{\alpha} u|_{\Sigma_-}, u|_{\Sigma_-})_{\Sigma_-}, \quad (3.3)$$

cf. [10, Thm. VI.2.1] and [7], represents the \mathcal{PT} -symmetric waveguide with the coupling function α and the potential V . If $V \equiv 0$, we write $\mathbf{H}_{\alpha}^{\Omega}$ instead of $\mathbf{H}_{\alpha, 0}^{\Omega}$.

Remark 3.2. By the first representation theorem [10, Thm. VI.2.1], one can verify that $\mathbf{H}_{\alpha, V}^{\Omega}$ is \mathcal{PT} -symmetric w.r.t parity $(\mathcal{P}u)(x, y) := u(x, -y)$, i.e. $\mathcal{PT}(\mathbf{H}_{\alpha, V}^{\Omega}) \subseteq (\mathbf{H}_{\alpha, V}^{\Omega})\mathcal{PT}$ or, using formally the commutator, $[\mathcal{PT}, \mathbf{H}_{\alpha, V}^{\Omega}] = 0$. Moreover, $\mathbf{H}_{\alpha, V}^{\Omega}$ is also \mathcal{P} -self-adjoint and \mathcal{T} -self-adjoint, i.e. $\mathbf{H}_{\alpha, V}^{\Omega} = \mathcal{T}(\mathbf{H}_{\alpha, V}^{\Omega})^*\mathcal{T}$.

3.2. The unperturbed operator. Let $V_0 \in L^{\infty}(\mathbb{R}; \mathbb{R})$ and $\alpha \in \mathbb{C}$ be fixed. In what follows, we denote the functions $\mathbb{R} \ni x \mapsto \alpha$ and $\Omega \ni (x, y) \mapsto V_0(x)$ again by α and V_0 . Define the self-adjoint operator $\mathbf{H}_{V_0}^{\mathbb{R}}$ in $L^2(\mathbb{R})$ and the m -sectorial operator $\mathbf{H}_{\alpha}^{\mathbb{I}}$ in $L^2(\mathbb{I})$ (cf. [7]) as:

$$\mathbf{H}_{V_0}^{\mathbb{R}}\psi := -\psi'' + V_0\psi, \quad \text{dom } \mathbf{H}_{V_0}^{\mathbb{R}} := H^2(\mathbb{R}); \quad (3.4)$$

$$\mathbf{H}_{\alpha}^{\mathbb{I}}\psi := -\psi'', \quad \text{dom } \mathbf{H}_{\alpha}^{\mathbb{I}} := \{\psi \in H^2(\mathbb{I}) : \psi'(\pm a) = -\alpha\psi(\pm a)\}. \quad (3.5)$$

Henceforth, $\mathbf{H}_{V_0}^{\mathbb{R}}$ and $\mathbf{H}_{\alpha}^{\mathbb{I}}$ are called the *longitudinal* and the *transversal* operators, respectively. Introduce the sectorial operator $S_{\alpha, V_0} := \mathbf{H}_{V_0}^{\mathbb{R}} \odot I_{L^2(\mathbb{I})} + I_{L^2(\mathbb{R})} \odot \mathbf{H}_{\alpha}^{\mathbb{I}}$ acting in $L^2(\Omega) = L^2(\mathbb{R}) \otimes L^2(\mathbb{I})$, which is closable and its closure

$$\mathbf{H}_{\alpha, V_0}^{\Omega} := \overline{S_{\alpha, V_0}} \quad (3.6)$$

is m -sectorial in $L^2(\Omega)$, see [21, §XIII.9, Cor. 2]. It can be shown by standard arguments that this new definition of $\mathbf{H}_{\alpha, V_0}^{\Omega}$ coincides with Definition 3.1 in the special case of constant coupling function and potential dependent only on x -variable.

Except for Remark 3.9, we restrict our analysis to the case $\alpha = i\alpha_0$ with $\alpha_0 \in \mathbb{R}$.

3.3. The transversal operator. First, we collect known results.

Proposition 3.3 ([11]). Let $\mathbf{H}_{i\alpha_0}^{\mathbb{I}}$, $\alpha_0 \in \mathbb{R}$, be as in (3.5) and \mathcal{P} as in (3.1). Then

- (i) we have $(\mathbf{H}_{i\alpha_0}^{\mathbb{I}})^* = \mathbf{H}_{-i\alpha_0}^{\mathbb{I}}$, $\mathbf{H}_{i\alpha_0}^{\mathbb{I}} = \mathcal{P}(\mathbf{H}_{i\alpha_0}^{\mathbb{I}})^*\mathcal{P}$, $\mathcal{PT}(\mathbf{H}_{i\alpha_0}^{\mathbb{I}}) \subseteq (\mathbf{H}_{i\alpha_0}^{\mathbb{I}})\mathcal{PT}$;
- (ii) $\sigma(\mathbf{H}_{i\alpha_0}^{\mathbb{I}}) = \cup_{n \in \mathbb{N}_0} \{\lambda_n\} \subset \mathbb{R}$, where $\lambda_0 = \alpha_0^2$ and $\lambda_n = \left(\frac{\pi n}{2a}\right)^2$, $n \in \mathbb{N}$;

- (iii) if $\pm \frac{2a}{\pi} \alpha_0 \notin \mathbb{N}$, then all the eigenvalues are simple; otherwise λ_0 has the geometric multiplicity one and the algebraic multiplicity two and all the other eigenvalues are simple.

Next, we classify the definiteness of eigenvalues of $H_{i\alpha_0}^{\mathbb{I}}$, see also Figure 3.1.

Proposition 3.4. *Let $H_{i\alpha_0}^{\mathbb{I}}$ and $\{\lambda_n\}_{n \in \mathbb{N}_0}$ be as in (3.5) and in Proposition 3.3 (ii), respectively. Let $\{\mu_n\}_{n \in \mathbb{N}_0}$ be eigenvalues $\{\lambda_n\}_{n \in \mathbb{N}_0}$ ordered in non-decreasing order (with algebraic multiplicities). Define the set*

$$\mathcal{E}(\alpha_0) := \begin{cases} \emptyset & \text{if } \alpha_0^2 \notin \{\lambda_n\}_{n \in \mathbb{N}}, \\ \{n_* - 1, n_*\} & \text{if } \alpha_0^2 = \lambda_{n_*} \text{ for some } n_* \in \mathbb{N}. \end{cases}$$

Then, with respect to $J_2 = \mathcal{P}$ in (3.1),

$$\begin{aligned} \sigma_{++}(H_{i\alpha_0}^{\mathbb{I}}) &= \{\mu_{2n} : n \in \mathbb{N}_0, 2n \notin \mathcal{E}(\alpha_0)\}, \\ \sigma_{--}(H_{i\alpha_0}^{\mathbb{I}}) &= \{\mu_{2n+1} : n \in \mathbb{N}_0, 2n+1 \notin \mathcal{E}(\alpha_0)\}, \\ \sigma_{00}(H_{i\alpha_0}^{\mathbb{I}}) &= \{\mu_n : n \in \mathcal{E}(\alpha_0)\}. \end{aligned}$$

Proof. The eigenfunctions corresponding to α_0^2 and $\{\lambda_n\}_{n \in \mathbb{N}}$ read, cf. [13, Prop.2.4],

$$\psi_0(x) = e^{-i\alpha_0(x+a)}, \quad \psi_n(x) = \cos(\sqrt{\lambda_n}(x+a)) - \frac{i\alpha_0}{\sqrt{\lambda_n}} \sin(\sqrt{\lambda_n}(x+a)), \quad n \in \mathbb{N},$$

thus $(\mathcal{P}\psi_0, \psi_0)_{\mathbb{I}} = \sin(2\alpha_0 a)/\alpha_0$ and $(\mathcal{P}\psi_n, \psi_n)_{\mathbb{I}} = a(-1)^n(\lambda_n - \lambda_0)/\lambda_n$, $n \in \mathbb{N}$. \square

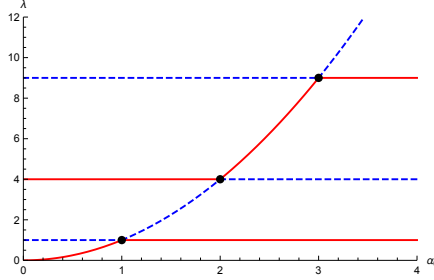


FIGURE 3.1. Lowest eigenvalues of $H_{i\alpha_0}^{\mathbb{I}}$ as a function of $\alpha_0 \in \mathbb{R}_+$ for $a = \pi/2$. The red (full) curves correspond to $\sigma_{++}(H_{i\alpha_0}^{\mathbb{I}})$, the blue (dashed) curves to $\sigma_{--}(H_{i\alpha_0}^{\mathbb{I}})$. The spectral points of not definite type (black balls) appear for exceptional values $\alpha_0 = 1, 2, 3, \dots$ only.

3.4. Spectra of definite type of the unperturbed waveguide. Slightly extending [7, Prop. 4.2, Rem. 4.2], one can straightforwardly check the following.

Lemma 3.5. *Let $\alpha_0 \in \mathbb{R}$, $V_0 \in L^\infty(\mathbb{R}; \mathbb{R})$ and $H_{V_0}^{\mathbb{R}}$, $H_{i\alpha_0}^{\mathbb{I}}$ and $H_{i\alpha_0, V_0}^{\Omega}$ be as in (3.4), (3.5) and (3.6), respectively. Then $H_{i\alpha_0, V_0}^{\Omega} = J(H_{i\alpha_0, V_0}^{\Omega})^* J$ with J as in (3.2). Moreover, we have $\sigma(H_{i\alpha_0, V_0}^{\Omega}) = \sigma(H_{i\alpha_0}^{\mathbb{I}}) + \sigma(H_{V_0}^{\mathbb{R}})$. In particular, for $V_0 \equiv 0$, $\sigma(H_{i\alpha_0}^{\Omega}) = [\mu_0, \infty)$, where $\mu_0 = \min \sigma(H_{i\alpha_0}^{\mathbb{I}})$.*

Notice that for the operators $H_{i\alpha_0}^{\mathbb{I}}$ and $H_{V_0}^{\mathbb{R}}$ the sets defined in (2.2) read as

$$\mathcal{M}_\mu = \sigma_{\mu\mu}(H_{i\alpha_0}^{\mathbb{I}}) + \sigma(H_{V_0}^{\mathbb{R}}), \quad \mu \in \{+, -, 0\}, \quad \mathcal{M} := \mathcal{M}_+ \cup \mathcal{M}_- \cup \mathcal{M}_0. \quad (3.7)$$

The definiteness of spectral points of $H_{i\alpha_0, V_0}^{\Omega}$ can be then characterized completely.

Theorem 3.6. *Let $\alpha_0 \in \mathbb{R}$, $V_0 \in L^\infty(\mathbb{R}; \mathbb{R})$, H_{α_0, V_0}^Ω be as in (3.6), \mathcal{M}_μ , $\mu \in \{+, -, 0\}$ be as in (3.7) and $\{\mu_n\}_{n \in \mathbb{N}_0}$ be as in Proposition 3.4. Then,*

$$\begin{aligned}\sigma_{++}(H_{\alpha_0, V_0}^\Omega) &= \mathcal{M}_+ \setminus (\mathcal{M}_- \cup \mathcal{M}_0), & \sigma_{--}(H_{\alpha_0, V_0}^\Omega) &= \mathcal{M}_- \setminus (\mathcal{M}_+ \cup \mathcal{M}_0), \\ \sigma_{00}(H_{\alpha_0, V_0}^\Omega) &= \mathcal{M}_0 \cup (\mathcal{M}_+ \cap \mathcal{M}_-),\end{aligned}$$

with respect to J as in (3.2). Thus, for $H_{\alpha_0}^\Omega$ (i.e. $V_0 \equiv 0$) in particular, we have

$$\sigma_{++}(H_{\alpha_0}^\Omega) = [\mu_0, \mu_1), \quad \sigma_{--}(H_{\alpha_0}^\Omega) = \emptyset, \quad \sigma_{00}(H_{\alpha_0}^\Omega) = [\mu_1, \infty).$$

Proof. In what follows, let $\mathcal{H}_1 = L^2(\mathbb{R})$, $\mathcal{H}_2 = L^2(\mathbb{I})$, $T_1 := H_{V_0}^\mathbb{R}$, $T_2 := H_{\alpha_0}^\mathbb{I}$, $S := \overline{T_1 \odot I_2 + I_1 \odot T_2}$, $J_1 := I_1$ and $J_2 := \mathcal{P}$ with $H_{V_0}^\mathbb{R}$, $H_{\alpha_0}^\mathbb{I}$, \mathcal{P} as in (3.4), (3.5) and (3.1), respectively. First, observe that $\mathcal{M} = \sigma(S) = \sigma_{\text{app}}(S)$. Moreover, by Proposition 2.2, $\mathcal{M}_0 \cup (\mathcal{M}_+ \cap \mathcal{M}_-) \subset \sigma_{00}(S)$ and $\sigma_{\pm\pm}(S) \subset \mathcal{M}_\pm \setminus (\mathcal{M}_\mp \cup \mathcal{M}_0)$. The opposite inclusions for the latter are shown below.

Define the projections $P_1^+ := I_1$ and $P_1^- := 0$ in \mathcal{H}_1 ; notice that $P_1^r = 0$ as well. Obviously, $\mathcal{H}_1, T_1, J_1, P_1^\pm$ and $\mathcal{H}_1^\pm := P_1^\pm \mathcal{H}_1$ satisfy Assumption 2.3 with $\varkappa_1^+ = 1$.

Now we decompose T_2 . We order the eigenvalues of T_2 of positive and negative type, see Proposition 3.4, in the increasing order $\sigma_{\pm\pm}(T_2) = \{\mu_n^\pm\}_{n \in \mathbb{N}_0}$ and denote by $\{Q_n^\pm\}_{n \in \mathbb{N}_0}$ the corresponding Riesz (spectral) projections. Let $N \in \mathbb{N}_0$ be arbitrary and define $P_2^\pm(N) := \sum_{n=0}^N Q_n^\pm$, $P_2^r(N) := I_2 - P_2^+(N) - P_2^-(N)$. For each $N \in \mathbb{N}_0$, the family $\mathcal{H}_2, T_2, J_2, P_2^\pm(N)$ and $\mathcal{H}_2^\pm(N) := P_2^\pm(N)\mathcal{H}_2$ satisfies Assumption 2.3 if we verify (2.3). To this end, observe that, for $\{Q_0^\pm, \dots, Q_N^\pm, I_2 - P_2^\pm(N)\}$, Lemma 2.4 yields operators $\Theta^\pm(N)$ and hence the orthogonal decompositions

$$\begin{aligned}\mathcal{H}_2 &= P_2^\pm(N)\mathcal{H}_2 \oplus_{\Theta^\pm(N)} (I_2 - P_2^\pm(N))\mathcal{H}_2, \\ \mathcal{H}_2^\pm(N) &= Q_0^\pm \mathcal{H}_2 \oplus_{\Theta^\pm(N)} Q_1^\pm \mathcal{H}_2 \oplus_{\Theta^\pm(N)} \cdots \oplus_{\Theta^\pm(N)} Q_N^\pm \mathcal{H}_2,\end{aligned}$$

w.r.t. products $(\Theta^\pm(N) \cdot, \cdot)_\mathbb{I}$ inducing norms equivalent to $\|\cdot\|_\mathbb{I}$. Using the latter and the mutual J_2 -orthogonality of Q_n^\pm (since the corresponding eigenfunctions of T_2 are J_2 -orthogonal), we obtain for arbitrary $f^\pm \in \mathcal{H}_2^\pm(N)$ that

$$\begin{aligned}\pm (J_2 f^\pm, f^\pm)_\mathbb{I} &= \pm \sum_{n=0}^N (J_2 Q_n^\pm f^\pm, Q_n^\pm f^\pm)_\mathbb{I} \geq \sum_{n=0}^N \kappa_n^\pm \|Q_n^\pm f^\pm\|_\mathbb{I}^2 \\ &\geq \min_{n=0, \dots, N} \kappa_n^\pm \sum_{n=0}^N \|Q_n^\pm f^\pm\|_\mathbb{I}^2 \geq \frac{\min_{n=0, \dots, N} \kappa_n^\pm}{N+1} \|f^\pm\|_\mathbb{I}^2,\end{aligned}$$

here $\kappa_n^\pm := \pm (J_2 \psi, \psi)_\mathbb{I}$, where $\psi \in \text{dom } H_{\alpha_0}^\mathbb{I}$ satisfies $H_{\alpha_0}^\mathbb{I} \psi = \mu_n^\pm \psi$ and $\|\psi\|_\mathbb{I} = 1$, and the inequality in (2.8) is used in the last step.

Next, as in (2.5), (2.11) and (2.12), we introduce the operators $T_1^\mu, T_2^\mu(N)$ with $\mu \in \mathcal{I} = \{+, -, r\}$, defined on the respective subspaces $\mathcal{H}_1^\mu := P_1^\mu \mathcal{H}_1$, $\mathcal{H}_2^\mu(N) := P_2^\mu(N)\mathcal{H}_2$, and the corresponding tensor products $S^{\mu\nu}(N)$ and $S^\mu(N)$, $\mu, \nu \in \mathcal{I}$.

It is straightforward to see that $\sigma(T_1^+) = \sigma(T_1)$, $\sigma(T_1^-) = \sigma(T_1^r) = \emptyset$, $\sigma(T_2^\pm(N)) = \{\mu_n^\pm\}_{n=0}^N$ and $\sigma(T_2^r(N)) = \sigma(T_2) \setminus (\sigma(T_2^+(N)) \cup \sigma(T_2^-(N)))$. Hence, we obtain

$$\begin{aligned}\sigma(S^+(N)) &= \sigma(S^{++}(N)) = \cup_{n=0}^N (\mu_n^+ + \sigma(T_1)), \\ \sigma(S^-(N)) &= \sigma(S^{+-}(N)) = \cup_{n=0}^N (\mu_n^- + \sigma(T_1)), \\ \sigma(S^r(N)) &= \sigma(S) \setminus ((\cup_{n=0}^N (\mu_n^+ + \sigma(T_1))) \cup (\cup_{n=0}^N (\mu_n^- + \sigma(T_1)))).\end{aligned}$$

From Theorem 2.5 (i) and (ii), we receive that, for every $N \in \mathbb{N}_0$,

$$\left(\bigcup_{n=0}^N (\mu_n^\pm + \sigma(T_1)) \right) \setminus (\mathcal{M}_\mp \cup \mathcal{M}_0 \cup (\bigcup_{n=N+1}^\infty (\mu_n^\pm + \sigma(T_1)))) \subset \sigma_{\pm\pm}(\mathbf{S}),$$

thus the proof is complete since $\mathcal{M}_\pm \setminus (\mathcal{M}_\mp \cup \mathcal{M}_0) \subset \sigma_{\pm\pm}(\mathbf{S})$. \square

The definiteness of the low-lying spectral points in $\sigma(\mathbf{H}_{i\alpha_0}^\Omega)$ for $V_0 \equiv 0$ is visualized in Figure 3.2. For a non-trivial $V_0 \neq 0$, $\sigma(\mathbf{H}_{V_0}^\mathbb{R})$ can be more complicated than $[0, \infty)$, which yields much richer structure for $\sigma(\mathbf{H}_{i\alpha_0, V}^\Omega)$; see Figure 3.3 for an illustration.

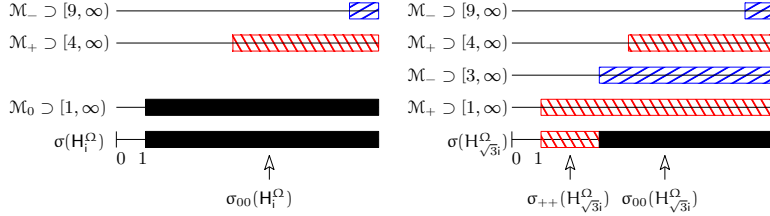


FIGURE 3.2. The bottom of $\sigma(\mathbf{H}_{i\alpha_0}^\Omega)$ and parts of sets $\mathcal{M}_\pm, \mathcal{M}_0$ for $a = \pi/2$, $\alpha_0 = 1$ and $\alpha_0 = \sqrt{3}$ (left to right).

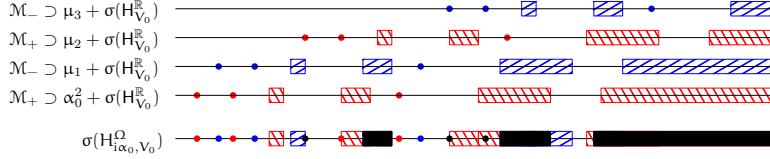


FIGURE 3.3. A possible structure and definiteness of the bottom of $\sigma(\mathbf{H}_{i\alpha_0, V_0}^\Omega)$ for $V_0 \neq 0$. The color coding (red for $++$, blue for $--$ and black for 00) is the same as in Figure 3.2.

3.5. Perturbations of \mathcal{PT} -symmetric waveguides. We perturb the waveguide $\mathbf{H}_{i\alpha_0, V_0}$ both in boundary conditions and potential. As long as $\|\alpha - \beta\|_\infty$ and $\|V - W\|_\infty$ are small, the gap distance $\widehat{\delta}(\mathbf{H}_{\alpha, V}^\Omega, \mathbf{H}_{\beta, W}^\Omega)$, cf. [10, Sec. IV §2], between $\mathbf{H}_{\alpha, V}^\Omega$ and $\mathbf{H}_{\beta, W}^\Omega$ is small. Moreover, the resolvent difference of $\mathbf{H}_{\alpha, V}^\Omega$ and $\mathbf{H}_{\beta, W}^\Omega$ is compact if $\alpha - \beta \in L^\infty(\mathbb{R})$ and $V - W \in L^\infty(\Omega)$, where for $\mathbb{X} \in \{\mathbb{R}, \Omega\}$, we define

$$L^\infty(\mathbb{X}) := \{u \in L^\infty(\mathbb{X}; \mathbb{C}) : \{x \in \mathbb{X} : |u(x)| \leq \varepsilon\} \text{ is bounded } \forall \varepsilon > 0\}.$$

We indicate how this slight extension of [7, Prop. 5.1] and [19, Prop. 4.7], where less general perturbations in boundary conditions were considered, can be proved.

Proposition 3.7. *Let $a > 0$, $\alpha \in L^\infty(\mathbb{R}; \mathbb{C})$ and $V \in L^\infty_{\mathcal{PT}}(\Omega; \mathbb{C})$. Then*

- (i) *for any $\varepsilon > 0$ there exists $\delta = \delta(\varepsilon, a, \alpha, V) > 0$ such that for $\beta \in L^\infty(\mathbb{R}; \mathbb{C})$ and $W \in L^\infty_{\mathcal{PT}}(\Omega)$ satisfying $\|\beta - \alpha\|_\infty + \|W - V\|_\infty \leq \delta$ the operators $\mathbf{H}_{\alpha, V}^\Omega$ and $\mathbf{H}_{\beta, W}^\Omega$ in Definition 3.1 fulfill $\widehat{\delta}(\mathbf{H}_{\alpha, V}^\Omega, \mathbf{H}_{\beta, W}^\Omega) \leq \varepsilon$;*
- (ii) *if $\alpha - \beta \in L^\infty(\mathbb{R})$ and $V - W \in L^\infty(\Omega)$, then $(\mathbf{H}_{\alpha, V}^\Omega - \lambda)^{-1} - (\mathbf{H}_{\beta, W}^\Omega - \lambda)^{-1}$ is compact for all $\lambda \in \rho(\mathbf{H}_{\alpha, V}^\Omega) \cap \rho(\mathbf{H}_{\beta, W}^\Omega)$.*

Proof. (i) The claim follows in a straightforward way from [10, Thm. VI.3.6] and Ehrling-type lemma, see *e.g.* [7, Lem. 3.1] for details in this special situation.

(ii) Set $U := W - V$ and $\omega := \beta - \alpha$. Denote $R_{\alpha,V}^\Omega(\lambda) := (H_{\alpha,V}^\Omega - \lambda)^{-1}$ for $\lambda \in \rho(H_{\alpha,V}^\Omega)$ and define the operators $T_{\alpha,V}^\pm(\lambda): L^2(\Omega) \rightarrow L^2(\mathbb{R})$, $T_{\alpha,V}^\pm(\lambda)f := ((R_{\alpha,V}^\Omega(\lambda)f)|_{\Sigma_\pm})$ and similarly for α and V replaced by β and W . Since $H_{\alpha,V}^\Omega$ and $H_{\beta,W}^\Omega$ are m -sectorial, there exists $a < 0$ such that $a \in \rho(H_{\alpha,V}^\Omega) \cap \rho(H_{\beta,W}^\Omega) \cap \rho(H_{\alpha,V}^\Omega) \cap \rho(H_{\beta,W}^\Omega)$. The resolvent difference is denoted by $D := R_{\alpha,V}^\Omega(a) - R_{\beta,W}^\Omega(a)$.

From the trace theorem ([18, Chap. 3]), the operators $T_{\alpha,V}^\pm(a)$ are everywhere defined in $L^2(\Omega)$ and bounded, moreover, we have $\text{ran } T_{\alpha,V}^\pm(a) \subset H^{1/2}(\mathbb{R})$. Let $f, g \in L^2(\Omega)$ and set $u := R_{\alpha,V}^\Omega(a)f$, $v := R_{\beta,W}^\Omega(a)g$. Then, we have

$$\begin{aligned} (Df, g)_\Omega &= (R_{\alpha,V}^\Omega(a)f, g)_\Omega - (R_{\beta,W}^\Omega(a)g, f)_\Omega = (u, g)_\Omega - (f, v)_\Omega \\ &= (u, (H_{\beta,W}^\Omega - a)v)_\Omega - ((H_{\alpha,V}^\Omega - a)u, v)_\Omega \\ &= (u, H_{\beta,W}^\Omega v)_\Omega - (H_{\alpha,V}^\Omega u, v)_\Omega. \end{aligned} \quad (3.8)$$

Observe that $u, v \in H^1(\Omega)$, which is the form domain of both the operators $H_{\alpha,V}^\Omega$ and $H_{\beta,W}^\Omega$. Hence, we can use [10, Thm. VI.2.1, VI.2.5] to rewrite (3.8) as

$$(Df, g)_\Omega = (Uu, v)_\Omega + (\omega u|_{\Sigma_+}, v|_{\Sigma_+})_{\Sigma_+} + (\bar{\omega} u|_{\Sigma_-}, v|_{\Sigma_-})_{\Sigma_-},$$

where we made use of (3.3). In fact, we have shown the resolvent identity

$$D = R_{\beta,W}^\Omega(a)UR_{\alpha,V}^\Omega(a) + (T_{\beta,W}^+(a))^* \omega T_{\alpha,V}^+(a) + (T_{\beta,W}^-(a))^* \bar{\omega} T_{\alpha,V}^-(a).$$

The compactness of D follows from $U \in L_\infty^\infty(\Omega)$, $\omega \in L_\infty^\infty(\mathbb{R})$ and $\text{ran } T_{\alpha,V}^\pm(a) \subset H^{1/2}(\mathbb{R})$, $\text{ran } R_{\alpha,V}^\Omega(a) \subset H^1(\Omega)$, for details see *e.g.* [17, Lem. 3.3 (i)]. \square

3.6. Spectral conclusions for the perturbed waveguide. We draw a spectral conclusion on \mathcal{PT} -symmetric waveguides based on Theorem 3.6 and stability of definite type spectra. Notice that in the case $V_0 \equiv 0$, the sets in the claims of Theorems 3.8 and 3.10 are explicit, namely (*cf.* Theorem 3.6)

$$\mathcal{M}_+ \setminus (\mathcal{M}_- \cup \mathcal{M}_0) = [\mu_0, \mu_1), \quad \mathcal{M}_- \setminus (\mathcal{M}_+ \cup \mathcal{M}_0) = \emptyset. \quad (3.9)$$

Theorem 3.8. *Let $a > 0$, $\alpha_0 \in \mathbb{R}$, $V_0 \in L^\infty(\mathbb{R}; \mathbb{R})$ and $\mathcal{M}_\pm, \mathcal{M}_0, \mathcal{M}$ be as in (3.7). Then for any compact set $\mathcal{F} \subset \mathbb{C}$ satisfying either $\mathcal{F} \cap \mathcal{M} \subset \mathcal{M}_+ \setminus (\mathcal{M}_- \cup \mathcal{M}_0)$ or $\mathcal{F} \cap \mathcal{M} \subset \mathcal{M}_- \setminus (\mathcal{M}_+ \cup \mathcal{M}_0)$, there exists a constant $\delta = \delta(\mathcal{F}, a, \alpha_0, V_0) > 0$ such that for any $\alpha \in L^\infty(\mathbb{R}; \mathbb{C})$ and any $V \in L_{\mathcal{PT}}^\infty(\Omega; \mathbb{C})$ with $\|\alpha - i\alpha_0\|_\infty + \|V - V_0\|_\infty \leq \delta$ the operator $H_{\alpha,V}^\Omega$ in Definition 3.1 satisfies:*

- (i) $\sigma(H_{\alpha,V}^\Omega) \cap \mathcal{F} \subset \mathbb{R}$;
- (ii) $\sigma_\varepsilon(H_{\alpha,V}^\Omega) \cap \mathcal{F} \subset \{\lambda \in \mathcal{F} : |\text{Im } \lambda| \leq \varepsilon M\}$, $\varepsilon > 0$, with $M = M(\mathcal{F}, a, \alpha, V) > 0$.

Proof. We prove the claim only for $\mathcal{F} \cap \mathcal{M} \subset \mathcal{M}_+ \setminus (\mathcal{M}_- \cup \mathcal{M}_0)$; the other case is analogous. By Lemma 3.5 and Theorem 3.6 we have $\sigma(H_{i\alpha_0, V_0}) = \mathcal{M}$ and $\sigma_{++}(H_{i\alpha_0, V_0}^\Omega) = \mathcal{M}_+ \setminus (\mathcal{M}_- \cup \mathcal{M}_0)$. By Theorem A.5 there exists $\gamma = \gamma(\mathcal{F}, a, \alpha_0, V_0)$, $\gamma \in (0, 1)$, such that for any operator $H \in \mathcal{C}(L^2(\Omega))$ satisfying $\widehat{\delta}(H_{i\alpha_0, V_0}^\Omega, H) \leq \gamma$ we have $\mathcal{F} \subset \sigma_{++}(H) \cup \text{r}(H)$. By Proposition 3.7 there exists $\delta = \delta(\gamma, a, \alpha_0, V_0) > 0$ such that for $\|\alpha - i\alpha_0\|_\infty + \|V - V_0\|_\infty \leq \delta$ we have $\widehat{\delta}(H_{i\alpha_0, V_0}^\Omega, H_{\alpha,V}^\Omega) \leq \gamma$. Since $H_{\alpha,V}^\Omega$ is \mathcal{T} -self-adjoint, see Remark 3.2, the residual spectrum of $H_{\alpha,V}^\Omega$ is empty, *cf.* [7,

Cor. 2.1], thus $r(H_{\alpha,V}^\Omega) = \rho(H_{\alpha,V}^\Omega)$ and hence $\mathcal{F} \subset \sigma_{++}(H_{\alpha,V}^\Omega) \cup \rho(H_{\alpha,V}^\Omega)$. Now J -self-adjointness of $H_{\alpha,V}^\Omega$, and Theorem A.2 (i), (ii) imply the claims. \square

Remark 3.9. For $V_0 \equiv 0$, Theorem 3.8 shows that the lowest part of $\sigma_{\text{ess}}(H_{i\alpha_0}^\Omega)$ which is of $++$ type, remains real for all sufficiently small perturbations respecting the symmetry. Such a conclusion is not valid if the bottom of $\sigma_{\text{ess}}(H_{i\alpha_0}^\Omega)$ is not of definite type. To see this, take $a = \pi/2$ and $\alpha_0 = 1$. Then the whole $\sigma_{\text{ess}}(H_i^\Omega)$ is not of definite type, see Theorem 3.6 and Figure 3.2. We consider $H_{i+\beta_0}^\Omega$ with $\beta_0 \in \mathbb{R}$, *i.e.* a perturbation of H_i^Ω in boundary conditions. The eigenvalues of the new transversal operator $H_{i+\beta_0}^\Omega$ obey the algebraic equation (with $\lambda = k^2$)

$$(k^2 - 1 - \beta_0^2) \sin(\pi k) - 2\beta_0 k \cos(\pi k) = 0, \quad (3.10)$$

see [12, Prop. 4.3]. While $k = 1$ is a solution of (3.10) for $\beta_0 = 0$, it is not difficult to verify that, for any negative β_0 with sufficiently small $|\beta_0|$, the only two solutions κ_1, κ_2 , of (3.10) in the neighborhood of $k = 1$ are non-real. Note also that $\kappa_1 \rightarrow 1$ as $\beta_0 \rightarrow 0$. Hence, for $\beta_0 < 0$ with sufficiently small $|\beta_0|$, $\sigma_{\text{ess}}(H_{i+\beta_0}^\Omega)$ contains two non-real branches $\kappa_1^2 + \mathbb{R}_+$, $\kappa_2^2 + \mathbb{R}_+$ with $\kappa_2^2 = \overline{\kappa_1^2} \notin \mathbb{R}$. It can also be shown that all the other solutions of (3.10) for sufficiently small $|\beta_0|$ are real. Thus $\sigma_{\text{ess}}(H_{i+\beta_0}^\Omega)$ has also a real branch $\kappa_3^2 + \mathbb{R}_+$; see Figure 3.4. Qualitatively, an arbitrarily small (in the gap metric) perturbation of H_i^Ω drastically changes the spectral properties.

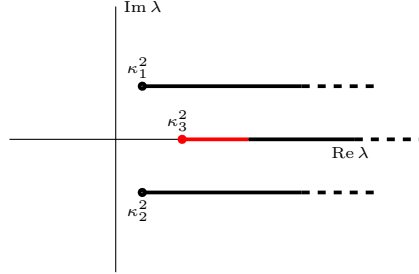


FIGURE 3.4. $\sigma(H_{i+\beta_0}^\Omega) = \sigma_{\text{ess}}(H_{i+\beta_0}^\Omega)$ for $\beta_0 < 0$ with small $|\beta_0|$ consists of two non-real branches $\kappa_{1,2}^2 + \mathbb{R}_+$ and one real branch $\kappa_3^2 + \mathbb{R}_+$.

Theorem 3.10. *Let $a > 0$, $\alpha_0 \in \mathbb{R}$, $V_0 \in L^\infty(\mathbb{R}; \mathbb{R})$, $\mathcal{M}, \mathcal{M}_\pm, \mathcal{M}_0$ be as in (3.7), $\alpha \in L^\infty(\mathbb{R}; \mathbb{C})$ be such that $\alpha - i\alpha_0 \in L^\infty(\mathbb{R})$ and let $V \in L_{\mathcal{P}\mathcal{T}}^\infty(\Omega)$ be such that $V(x, y) - V_0(x) \in L^\infty(\Omega)$. Assume that the interval $[a, b]$ satisfies either $[a, b] \cap \mathcal{M} \subset \mathcal{M}_+ \setminus (\mathcal{M}_- \cup \mathcal{M}_0)$ or $[a, b] \cap \mathcal{M} \subset \mathcal{M}_- \setminus (\mathcal{M}_+ \cup \mathcal{M}_0)$. Then there is an open neighborhood $\mathcal{U} \subset \mathbb{C}$ of $[a, b]$ such that $H_{\alpha,V}^\Omega$ from Definition 3.1 satisfies:*

- (i) $\sigma(H_{\alpha,V}^\Omega) \cap \mathcal{U} \subset \mathbb{R}$;
- (ii) $\sigma_\varepsilon(H_{\alpha,V}^\Omega) \cap \mathcal{U} \subset \{\lambda \in \mathcal{U}: |\text{Im } \lambda| \leq M\varepsilon^{1/m}\}$, $\varepsilon > 0$, with $m = m(\mathcal{U}, a, \alpha, V) \in \mathbb{N}$ and $M = M(\mathcal{U}, a, \alpha, V) > 0$;
- (iii) *there exists at most finite number of eigenvalues $\{\nu_k\}_{k=1}^N$, $N \in \mathbb{N}_0$, of $H_{\alpha,V}^\Omega$ in $[a, b]$ such that for any $[c, d] \subset [a, b] \setminus \cup_{k=1}^N \{\nu_k\}$ one finds an open neighborhood $\mathcal{V} \subset \mathbb{C}$ for which $\sigma_\varepsilon(H_{\alpha,V}^\Omega) \cap \mathcal{V} \subset \{\lambda \in \mathcal{V}: |\text{Im } \lambda| \leq K\varepsilon\}$ for any $\varepsilon > 0$ with $K = K(\mathcal{V}, a, \alpha, V) > 0$.*

Proof. We give the proof only for the case $[a, b] \cap \mathcal{M} \subset \mathcal{M}_+ \setminus (\mathcal{M}_- \cup \mathcal{M}_0)$; the second case is analogous. By Lemma 3.5 and Theorem 3.6 we have $\sigma(\mathbf{H}_{i\alpha_0, V_0}^\Omega) = \mathcal{M}$ and $\sigma_{++}(\mathbf{H}_{i\alpha_0, V_0}^\Omega) = \mathcal{M}_+ \setminus (\mathcal{M}_- \cup \mathcal{M}_0)$. By Proposition 3.7 the resolvent difference $\mathbf{R}_{\alpha, V}^\Omega(\lambda) - \mathbf{R}_{i\alpha_0, V_0}^\Omega(\lambda)$ is compact for all $\lambda \in \rho(\mathbf{H}_{\alpha, V}^\Omega) \cap \rho(\mathbf{H}_{i\alpha_0, V_0}^\Omega)$. Hence, by Theorem A.4 we have $[a, b] \subset \sigma_{\pi_+}(\mathbf{H}_{\alpha, V}^\Omega) \cup \rho(\mathbf{H}_{\alpha, V}^\Omega)$. Moreover, the essential spectrum of $\mathbf{H}_{\alpha, V}^\Omega$ (all five definitions in [8, Sec. IX] coincide for $\mathbf{H}_{\alpha, V}^\Omega$) is the same as for $\mathbf{H}_{i\alpha_0, V_0}^\Omega$, cf. [8, Thm. IX.2.4]. This implies in particular that $[a, b] \subset \overline{\rho(\mathbf{H}_{\alpha, V}^\Omega)}$ and thus the J -self-adjointness of $\mathbf{H}_{\alpha, V}^\Omega$ and Theorem A.3 (i), (ii) imply respective items of this theorem. Theorem A.3 (i), (iii) and Theorem A.2 (ii) yield item (iii). \square

APPENDIX A. PROPERTIES OF SPECTRA OF DEFINITE TYPE AND OF TYPE π

In what follows, \mathcal{H} is a Hilbert space and J is a bounded symmetric involution in \mathcal{H} . Spectra of definite type or type π are always defined w.r.t. this J . For $T \in \mathcal{C}(\mathcal{H})$, the set of points of regular type is denoted by $\mathfrak{r}(T) := \mathbb{C} \setminus \sigma_{\text{app}}(T)$.

Definition A.1 ([4, 20]). *A spectral point $\lambda \in \sigma_{\text{app}}(T)$ is of type π_+ (or π_-) w.r.t. J if there exists a closed subspace $\mathcal{H}_\lambda \subseteq \mathcal{H}$ with $\text{codim } \mathcal{H}_\lambda < \infty$ such that every approximate eigensequence $\{f_n\}_n \subset \mathcal{H}_\lambda \cap \text{dom } T$ corresponding to λ satisfies*

$$\liminf_{n \rightarrow \infty} (Jf_n, f_n) > 0, \quad (\text{resp., } \limsup_{n \rightarrow \infty} (Jf_n, f_n) < 0).$$

The set of all spectral points of type π_\pm of T is denoted by $\sigma_{\pi_\pm}(T)$.

Theorem A.2. [4, Prop. 3] *Let $T \in \mathcal{C}(\mathcal{H})$ be such that $T = JT^*J$. Then*

- (i) $\sigma_{++}(T) \cup \sigma_{--}(T) \subseteq \mathbb{R}$.
- (ii) *If $\mathcal{F} \subset \mathbb{R}$ is closed and either $\mathcal{F} \cap \sigma(T) \subseteq \sigma_{++}(T)$ or $\mathcal{F} \cap \sigma(T) \subseteq \sigma_{--}(T)$, then there exists an open neighborhood $\mathcal{U} \subset \mathbb{C}$ of \mathcal{F} and a constant $M = M(\mathcal{F}, T) > 0$ such that $\mathcal{U} \setminus \mathbb{R} \subset \rho(T)$ and $\sigma_\varepsilon(T) \cap \mathcal{U} \subset \{\lambda \in \mathcal{U} : |\text{Im } \lambda| \leq M\varepsilon\}$ for $\varepsilon > 0$.*

Theorem A.3. [4, Thm. 17, Thm. 18, Thm. 20] *Let $T \in \mathcal{C}(\mathcal{H})$ be such that $T = JT^*J$. Then the following statements hold.*

- (i) *If $\lambda_0 \in \sigma_{\pi_+}(T) \setminus \sigma_{++}(T)$ ($\lambda_0 \in \sigma_{\pi_-}(T) \setminus \sigma_{--}(T)$), then $\lambda_0 \in \sigma_{\text{p}}(T)$ and there is a corresponding eigenvector ψ_0 satisfying $(J\psi_0, \psi_0) \leq 0$ (resp., $(J\psi_0, \psi_0) \geq 0$).*
- (ii) *Let a closed finite interval $[a, b]$ be such that $[a, b] \cap \sigma(T) \subseteq \sigma_{\pi_\pm}(T)$ and $[a, b] \subset \overline{\rho(T)}$, where $\overline{\rho(T)}$ stands for the topological closure of $\rho(T)$ in \mathbb{C} . Then there exists an open neighborhood $\mathcal{U} \subset \mathbb{C}$ of $[a, b]$ such that:*
 - (a) $\sigma(T) \cap \mathcal{U} \subset \mathbb{R}$;
 - (b) *there exist constants $m = m(\mathcal{U}, T) \in \mathbb{N}$ and $M = M(\mathcal{U}, T) > 0$ for which $\sigma_\varepsilon(T) \cap \mathcal{U} \subset \{\lambda \in \mathcal{U} : |\text{Im } \lambda| \leq M\varepsilon^{1/m}\}$, for $\varepsilon > 0$;*
 - (c) *there is at most finite number $N \in \mathbb{N}_0$ of exceptional eigenvalues $\{\nu_k\}_{k=1}^N \subset \mathcal{U} \cap \mathbb{R}$ of T such that $(\mathcal{U} \cap \sigma(T) \cap \mathbb{R}) \setminus \{\nu_k\}_{k=1}^N \subset \sigma_{\pm\pm}(T)$.*

Theorem A.4. [4, Thm. 19] *Let $T_k \in \mathcal{C}(\mathcal{H})$ be such that $T_k = JT_k^*J$, $k = 1, 2$. Assume that $\rho(T_1) \cap \rho(T_2) \neq \emptyset$ and that $(T_2 - \mu)^{-1} - (T_1 - \mu)^{-1}$ is compact for some $\mu \in \rho(T_1) \cap \rho(T_2)$. Then $(\sigma_{\pi_\pm}(T_2) \cup \rho(T_2)) \cap \mathbb{R} = (\sigma_{\pi_\pm}(T_1) \cup \rho(T_1)) \cap \mathbb{R}$.*

Theorem A.5. [2, Thm. 4.5] *Let $T_1 \in \mathcal{C}(\mathcal{H})$. Let a compact set $\mathcal{F} \subset \mathbb{C}$ satisfy $\mathcal{F} \subset \sigma_{++}(T_1) \cup \mathfrak{r}(T_1)$, (resp. $\mathcal{F} \subset \sigma_{--}(T_1) \cup \mathfrak{r}(T_1)$). Then there exists a constant $\gamma = \gamma(\mathcal{F}, T_1) \in (0, 1)$ such that, for all $T_2 \in \mathcal{C}(\mathcal{H})$ satisfying $\widehat{\delta}(T_1, T_2) \leq \gamma$, we have $\mathcal{F} \subset \sigma_{++}(T_2) \cup \mathfrak{r}(T_2)$, (resp., $\mathcal{F} \subset \sigma_{--}(T_2) \cup \mathfrak{r}(T_2)$).*

REFERENCES

- [1] AZIZOV, T., AND IOKHVIDOV, I. *Linear operators in spaces with an indefinite metric*. John Wiley & Sons, Chichester, 1989.
- [2] AZIZOV, T. Y., BEHRNDT, J., JONAS, P., AND TRUNK, C. Spectral points of definite type and type π for linear operators and relations in Krein spaces. *J. London Math. Soc.* 83 (2011), 768–788.
- [3] AZIZOV, T. Y., DENISOV, M., AND PHILIPP, F. Spectral functions of products of selfadjoint operators. *Math. Nachr.* 285, 14–15 (2012), 1711–1728.
- [4] AZIZOV, T. Y., JONAS, P., AND TRUNK, C. Spectral points of type π_+ and π_- of self-adjoint operators in Krein spaces. *J. Funct. Anal.* 226 (2005), 114–137.
- [5] BLANK, J., EXNER, P., AND HAVLÍČEK, M. *Hilbert Space Operators in Quantum Physics*, 2nd ed. Springer and American Institute of Physics, 2008.
- [6] BORISOV, D., AND KREJČÍŘÍK, D. The effective Hamiltonian for thin layers with non-Hermitian Robin-type boundary conditions. *Asymptot. Anal.* 76 (2012), 49–59.
- [7] BORISOV, D., AND KREJČÍŘÍK, D. \mathcal{PT} -symmetric waveguides. *Integral Equations Operator Theory* 62 (2008), 489–515.
- [8] EDMUNDS, D. E., AND EVANS, W. D. *Spectral Theory and Differential Operators*. Oxford University Press, New York, 1987.
- [9] JONAS, P. On locally definite operators in Krein spaces. In *Spectral analysis and its applications*, vol. 2 of *Theta Ser. Adv. Math.* Theta, Bucharest, 2003, pp. 95–127.
- [10] KATO, T. *Perturbation theory for linear operators*. Springer-Verlag, Berlin, 1995.
- [11] KREJČÍŘÍK, D., BÍLA, H., AND ZNOJIL, M. Closed formula for the metric in the Hilbert space of a \mathcal{PT} -symmetric model. *J. Phys. A: Math. Gen.* 39 (2006), 10143–10153.
- [12] KREJČÍŘÍK, D., AND SIEGL, P. \mathcal{PT} -symmetric models in curved manifolds. *J. Phys. A: Math. Theor.* 43 (2010), 485204.
- [13] KREJČÍŘÍK, D., SIEGL, P., AND ŽELEZNÝ, J. On the similarity of Sturm-Liouville operators with non-Hermitian boundary conditions to self-adjoint and normal operators. *Complex Anal. Oper. Theory* 8 (2014), 255–281.
- [14] KREJČÍŘÍK, D., AND TATER, M. Non-Hermitian spectral effects in a \mathcal{PT} -symmetric waveguide. *J. Phys. A: Math. Theor.* 41 (2008), 244013 (14pp).
- [15] LANCASTER, P., MARKUS, A. S., AND MATSAEV, V. I. Definitizable operators and quasihyperbolic operator polynomials. *J. Funct. Anal.* 131 (1995), 1–28.
- [16] LANGER, H., MARKUS, A., AND MATSAEV, V. Locally definite operators in indefinite inner product spaces. *Math. Ann.* 308 (1997), 405–424.
- [17] LOTOREICHIK, V., AND ROHLER, J. Schatten-von Neumann estimates for resolvent differences of Robin Laplacians on a half-space. *Oper. Theory Adv. Appl.* 221 (2012), 453–468.
- [18] MCLEAN, W. *Strongly elliptic systems and boundary integral equations*. Cambridge: Cambridge University Press, 2000.
- [19] NOVÁK, R. Bound states in waveguides with complex Robin boundary conditions. *Asymptot. Anal.* (to appear). arXiv:1409.0626.
- [20] PHILIPP, F., AND TRUNK, C. Spectral points of type π_+ and type π_- of closed operators in indefinite inner product spaces. *Oper. Matrices* 9 (2015), 481–506.
- [21] REED, M., AND SIMON, B. *Methods of Modern Mathematical Physics, Vol. 4: Analysis of Operators*. Academic Press, New York-London, 1978.
- [22] SCHMÜDGEN, K. *Unbounded self-adjoint operators on Hilbert space*, vol. 265 of *Graduate Texts in Mathematics*. Springer, Dordrecht, 2012.
- [23] TRUNK, C. *Operator Theory*. Springer Basel, 2015, ch. Locally Definitizable Operators: The Local Structure of the Spectrum, pp. 1–18.

(Vladimir Lotoreichik) NUCLEAR PHYSICS INSTITUTE CAS, 25068 ŘEŽ, CZECH REPUBLIC
E-mail address: lotoreichik@ujf.cas.cz

(Petr Siegl) MATHEMATISCHES INSTITUT, UNIVERSITÄT BERN, ALPENEGGSTR. 22, 3012 BERN,
 SWITZERLAND & ON LEAVE FROM NUCLEAR PHYSICS INSTITUTE CAS, 25068 ŘEŽ, CZECH REPUBLIC
E-mail address: petr.siegl@math.unibe.ch