



**QUEEN'S  
UNIVERSITY  
BELFAST**

## **Catering and dividend policy: evidence from the Netherlands over the twentieth century**

de Jong, A., Fliers, P. T., & van Beusichem, H. C. (2019). Catering and dividend policy: evidence from the Netherlands over the twentieth century. *Financial History Review*, 26(3), 321-358.  
<https://doi.org/10.1017/S0968565019000209>

**Published in:**  
Financial History Review

**Document Version:**  
Peer reviewed version

**Queen's University Belfast - Research Portal:**  
[Link to publication record in Queen's University Belfast Research Portal](#)

**Publisher rights**  
Copyright 2019 Cambridge University Press. This work is made available online in accordance with the publisher's policies. Please refer to any applicable terms of use of the publisher.

**General rights**  
Copyright for the publications made accessible via the Queen's University Belfast Research Portal is retained by the author(s) and / or other copyright owners and it is a condition of accessing these publications that users recognise and abide by the legal requirements associated with these rights.

**Take down policy**  
The Research Portal is Queen's institutional repository that provides access to Queen's research output. Every effort has been made to ensure that content in the Research Portal does not infringe any person's rights, or applicable UK laws. If you discover content in the Research Portal that you believe breaches copyright or violates any law, please contact [openaccess@qub.ac.uk](mailto:openaccess@qub.ac.uk).

# **Catering and Dividend Policy: Evidence from the Netherlands over the Twentieth Century**

ABE DE JONG<sup>\*</sup>, PHILIP FLIERS<sup>#</sup> AND HENRY VAN BEUSICHEM<sup>†</sup>

August 2019

**Forthcoming in *Financial History Review***

\* Corresponding author. Monash University, Australia and Rotterdam School of Management, Erasmus University, The Netherlands, email: [abe.dejong@monash.edu](mailto:abe.dejong@monash.edu). # Queen's University Belfast, Northern Ireland, email [p.fliers@qub.ac.uk](mailto:p.fliers@qub.ac.uk). † Faculty of Behavioural, Management and Social Sciences, University of Twente, The Netherlands, email: [h.c.vanbeusichem@utwente.nl](mailto:h.c.vanbeusichem@utwente.nl).

The data for this project was collected as part of the NWO project 'The corporate governance of Dutch business in the 20th century – structural change and performance' (NWO 360-52-080). Authors are listed alphabetically. We thank Gareth Campbell, Chris Colvin, Marc Deloof, Oscar Gelderblom, Les Hannah, Joost Jonker, Petko Kalev, Leentje Moorgat, Kim Oosterlinck, Neil Rollings, John Turner, Jan Luiten Van Zanden, Chris Veld and Gerarda Westerhuis, two anonymous reviewers, and participants of the Financial History Group in Utrecht, the European Business History Association Annual Congress 2015, the Belgian Financial Research Forum 2014, and the European Association for Banking and Financial History New Scholars Workshop 2014 for comments.

# **Catering and Dividend Policy: Evidence from the Netherlands over the Twentieth Century**

## **Abstract**

This paper investigates the determinants of Dutch firms' dividend policies in the 20<sup>th</sup> century. We identify three distinct episodes and document shifts in dividend policies in the 1930s and 1980s, because firm managers cater to the changing preferences of shareholders. The first episode, prior to the Second World War, was characterized by dividends that were fixed contracts between shareholder and management and the payouts were mechanically determined by earnings. The second epoch of Dutch dividend policy, until the 1980s, was characterized by dividend smoothing. Dividends were still strongly related to earnings, but because of shareholder's preferences for stable dividend income, earnings changes are incorporated in dividends with a lag. Finally, dividend policy in the most recent episode is inspired by shareholder wealth maximization, based on agency and signalling motives. In this period, dividends have become largely decoupled from earnings.

# 1. Introduction

After the seminal works of Modigliani and Miller (1958, 1961) and Black (1976), the most commonly cited arguments in favour of firm's paying dividends are the reduction in agency costs (Easterbrook 1984; and Jensen 1986) and the value of signalling (Bhattacharya 1979; and John and Williams 1985; Miller and Rock, 1985). For recent years, Fama and French (2001) show that the proportion of firms paying cash dividends has sharply declined. Moreover, Brav et al. (2005) show that recently US firms exhibited significant decoupling between earnings and dividends. Recently, the changing preferences of shareholders have been incorporated in the literature by Baker and Wurgler (2004a, 2004b), who show that firms' dividend policies during the period 1963-2000 catered towards shareholders' appetite, based on relative market valuations of (non-) dividend-paying stocks. Dividend policy has also been studied in an historical context. Dividend policy for British firms has been studied by Turner et al. (2013) over the period 1825-1870, while Braggion and Moore (2011) investigate British firms, over the period 1895-1905. Long-run evidence on dividend policies of Belgian firms over 1838-2012 has been provided by Moortgat et al. (2017).

This study investigates determinants of dividend policies for Dutch companies. We ask two questions. First, how did dividend policies evolve in The Netherlands over the course of the 20<sup>th</sup> century? Second, how did the purpose of Dutch dividend policies change in this evolution? We describe the history of Dutch corporate finance and governance and examine the role of shareholder preferences in firm's payout policies. We identify three distinct regimes of dividend policies in Dutch economic history and estimate models for each regime to assess the determinants of dividend policy and value effects of dividends. We apply data on Dutch non-financial corporations listed on the stock exchange of Amsterdam from 1903 to 2003. Studying Dutch dividend policy over an extended period is interesting for a variety of reasons. First, the Dutch economy is a small and open economy and a price taker on global markets, as such dividend policies should resonate with international practices. Second, the quality and the availability of the data is good. While Turner et al. (2013) and Braggion and Moore (2011) study respectively fifty and ten years, we study a period covering one hundred years. Moortgat et al. (2007) cover a period of 174 years, but their analysis is primarily based on stock market data and does not use accounting data.

The main contribution of our paper is to relate catering theory to the understanding of long-run dividend policy evolution. Baker and Wurgler (2004a, 2004b) document that firms adjust their dividend payouts to short-term changes in the relative valuation of firms that do

and do not pay dividends. In addition to this short-term catering practice, we document a more fundamental way of catering where firms adapt to long-term changes in shareholders' preferences about the dividend policies. We show that over time there is substantial time variation in dividend policies, which is consistent with managers of large firms who cater towards shifts in shareholder preferences.

The remainder of this study is structured in the following manner. First, in Section 2, we describe the institutional background of the Dutch corporate sector in order to document the three distinct dividend policy regimes and we define predictions for each of the three regimes. Section 3 introduces the data set and methods. In section 4 we describe our empirical analyses of the determinants of dividends of the payout ratio, as well as the value-implications of dividend policy. Section 5 concludes.

## **2. Dividend regimes**

### *2.1 Early 20<sup>th</sup> century: Distributing profits according to statutes*

Characterized by a tradition of international trade and foreign investment, the Netherlands' small, open economy experienced a long period of economic growth and international interconnectedness that lasted until 1914 (Sluyterman 2005). Neutrality during the First World War posed both challenges and opportunities for Dutch firms, but the economy largely benefited and grew strongly after 1918 (Van Zanden 1998). Although some larger multinational firms were located in the Netherlands, the majority of public firms were relatively small, with dominantly family ownership and private investors (Westerhuis and De Jong, 2015). Notwithstanding a revision in 1928, the law governing financial reporting incorporated in the Commercial Code remained underdeveloped until enactment of the Company Law in 1976. Prior to the Second World War, firms seldom disclosed more financial information than was required by law, and also held undisclosed reserves (Zeff et al. 1992).

The main purpose of dividends in the early 20<sup>th</sup> century was twofold. First, dividends were a source of income for the shareholders. Many families and private investors would use the dividends for consumption and the remainder for reinvestment in other assets. Second, due to weak disclosure practices, dividends provided the most tangible evidence of the firms' performance. The practice of determining the annual dividend also reflects this dual purpose, as the dividend policy was predetermined in the company statutes, contracting the management to distribute cash to the owners (Koert 1934). A typical statutory arrangement would distribute

profits between reserves, to which an amount sufficient to meet a specified level would be allocated, and fixed payments, expressed as a percentage of their nominal equity value, made to shareholders (and directors). These practices originated in the 18<sup>th</sup> century (Koert 1934). The remainder, defined as excess profits, was used to further augment reserves and dividends paid to shareholders and directors. Profits were thus a key determinant of dividend payout. Owing to the requirement to maintain reserves, however, profits did not necessarily correlate perfectly with payout ratio. A firm that reported a loss typically did not pay a dividend. A positive effect might be observed in case the accumulated reserves are deemed sufficient, leaving a greater portion of profits to be distributed as dividends. Clearly, firms distributed a large part of the profits to their owners, thereby informing investors about the firm's value.<sup>1</sup> Dividends were consequently perceived by shareholders to convey important information about firms' earnings and financial prospects.<sup>2</sup>

Koert notes that since the start of the 20<sup>th</sup> century final decisions about profit distribution have been made at shareholder meetings (Koert 1934, p. 122), in practice, determined by the largest shareholders while dispersed and unorganized minority shareholders, typically more interested in short-term capital gains than in policies designed to strengthen firms or foster long-term growth, rarely attended such meetings. Koert concludes that the structure of dividends changed little between 1900 and 1930. In practice, liquid assets also had relevance as sources of cash for dividend payments. Financial markets and external financing were of limited importance during this period, firms relying largely on retained earnings to finance investment.<sup>3</sup> Cash was the prevailing type of dividend until the Second World War, while share repurchases and stock dividends played only on a minor role to that point (Van Keep 1950, p. 87).<sup>4</sup>

Although taxation of dividends varied over this period (Brandsma 1995), dividends were punished with a small taxation and capital gains were exempt. In 1892, the *Patentregt*, dating from 1805, was split into the Wealth Tax Act (*Wet op Vermogensbelasting 1892*), with

---

<sup>1</sup> International practice did not differ much from Dutch practice in terms of relevance of dividends to investors and high payouts; Acheson et al. (2009) document dividends to have been the most important component of shareholder returns in the 19<sup>th</sup> century United Kingdom.

<sup>2</sup> The taxation of dividend and bonus payouts from 1917 onwards was motivated by difficulty in measuring profits. This situation was not uncommon, for example Rutterford (2004) describes that before the 1948 Companies Act and 1965 taxation revision British investors were required to adhere to dividend-based valuation techniques owing to the low credibility of British earnings figures.

<sup>3</sup> Polak (1923) mentions dividends as financial policy only on p. 169, in reference to retained earnings serving to repay debt, in effect, a negative leveraging of dividends (based on De Jongh 1919).

<sup>4</sup> Dorsman (1981, p. 8) notes that in the Netherlands the first stock dividend was paid in 1930 by Rubber Cultuur Maatschappij Amsterdam, and that many Dutch firms resorted to stock dividends during the Second World War owing to the difficulty of transferring cash (see also Van Keep 1950, Appendix pp. 153-155).

an initial fictional income tax of 4% (levied on wealth in excess of 13,000 guilders at a maximum rate of 0.15% of the 4%), and Operating Tax Act (*Wet op Bedrijfsbelasting 1893*), which taxed dividend income at 2%. This tax regime provided a minor disadvantage of dividends, as well as a double taxation for shareholders based on both fictional and actual dividend income (Brandsma 1995). In 1914 the Income Tax Act (*Wet op de Inkomstenbelasting 1914*) replaced the 1892/3 acts and taxed wealth directly without fictional income. This law was complemented by a new dividend tax for corporations introduced in 1917 (*Wet op de Dividend en Tantièmebelasting*), which taxed dividend and bonus payouts moderately at 5% (1917) to 12% (1940), and lasted until 1940 (Brandsma 1995). Even though the tax on dividends switched from shareholders to corporations, in the entire period dividends receive an unfavourable tax treatment when compared to untaxed capital gains. However, this tax was relatively low.

In Table 1 we present predictions for the dividend patterns and payout policies in the first period, and for the two subsequent regimes.

[Please insert Table 1 here]

We expect in the period 1903-1938, labelled as the ‘statutory formula’ period, that firms pay dividends when the profits allow them to do this. This implies that dividends are cyclical, i.e. in times of sufficient profitability, most firms will pay dividends and distribute a high portion of the profits. Due to this cyclicity, the dividends will fluctuate with the business cycle. Firms reporting losses will not pay dividends, and the level of profitability affects dividends positively. Reserves are not used to pay dividends, while sufficient liquidity does have a positive effect on the probability of paying dividends, mainly for practical reasons. Because taxes are negligible we expect no effect from taxation on dividends. For shareholders, the dividends are a key source of information, and therefore firm values are strongly driven by dividend payments and the level of the dividends.

## 2.2 Post-war developments: Smoothing dividends

The Dutch economy experienced a period of stagnation from 1929 until the Second World War (Van Zanden 1998, p. 106), although the Dutch economy recovered somewhat after leaving the Gold Standard in 1936. In the 1930s, the profits of the firms dropped markedly and many firms reported losses. This implied that many firms ceased to pay dividends or had to cut dividends dramatically. Shareholders became aware that the policy of paying out a fraction of

earnings negatively affected their income and thus consumption. After the Second World War, the Netherlands witnessed a period of strong growth (1945-1973). In this period, the shareholder base of Dutch listed firms did not change, even though the rights of shareholders were gradually limited, because supervisory boards and employees became more powerful (Westerhuis and De Jong 2015).

Dividend policy in the post-war years was largely determined by experiences in the 1930s, shareholders worldwide demanding dividends that could not be paid in the face of declining profits. This experience prompted a revision of ideas about dividend policy. US scholars and practitioners were the first to promote the notion of smoothing. Wilbur (1932) mentions that in the “generally depressed conditions [...] companies have been forced to revise established dividend policies” (p. 373). He then argues that firms can benefit from stabilizing dividends, by reducing dividends in times of high profits to be paid out in poor conditions, smoothing the dividends. The benefits is that this “[...] creates a loyal group of shareholders.” (p. 377). Around the globe smoothing, a new dividend policy, was introduced: in the US by scholars such as Wilbur (1932) and Buchanan (1938) and in similar spirit in the Netherlands by Van Berkum (1943). Under this regime firms pay stable dividends, where changes in earnings are gradually incorporated in dividends.

In this regime, firms tend to hesitate to increase dividends in the wake of increases in profits that may not be sustainable; dividends are smoothed when adjustments in response to changes in earnings occur with a delay (Lintner 1956).<sup>5</sup> The notion of smoothing was articulated in the Netherlands initially by Van Berkum (first in 1943 and again in 1948). Smoothing policies, clearly described in seminal work by Van Keep (1950), soon became the dominant recommended policy in Dutch academic writings (De Lange 1957; Meij and Snel 1964; and Bouma 1980). Firms in a smoothing regime build reserves by retaining profits, rendering dividends more predictable and less dependent on short-term changes in earnings, and forestalling discontinuation in the event losses are incurred. Van Keep (1950) justified smoothing on the basis of such positive effects as rendering shareholders more loyal and less speculative and enhancing firms’ creditworthiness and liquidity. Dividend policy was, during

---

<sup>5</sup> Lintner (1956) has conducted interviews with corporate executives and empirically tested a smoothing model derived from the interviews. His model is motivated as follows (page 101): “A prudent foresighted management will always do its best to plan ahead in all aspects of financial policy to avoid getting into such uncomfortable situations where dividends have to be cut substantially below those which the company's previous practice would lead stockholders to expect on the basis of current earnings. Stockholder reactions in such situations have been sufficiently vigorous and effective in enough companies that the fear of such a reaction is an effective "burr under the saddle" to all managements, including those which have never been in such difficulty themselves”.



this period, even referred to as reservation policy (*reserveringspolitiek*).<sup>6</sup>

Dividends were taxed and constrained in a variety of ways during this period (Brandsma 1995). A 1941 resolution (*Besluit op de Dividendbeperking 1941*) imposed a tax on corporations that paid out more than 6% on paid-in capital. This resolution replaced in 1950 by a dividend limitation (*Besluit op de Dividendbeperking 1950*) that remained in place until 1953. In 1953, the Dutch Social-Economic Council concluded that the limitations were not effective in influencing dividend payouts (SER 1953). The Dutch government responded to the oil crisis in 1974 by capping dividends at the maximum of the percentage of the previous year or average over the past five years (*Machtigingswet Inkomensvorming 1974*).<sup>7</sup> Dividends were taxed as income of the shareholders, while capital gains remained untaxed. The *Wet op Dividendbelasting*, introduced in 1965 and revised in 1969, increased the withholding tax from 15% to the internationally customary 25%. The dividend taxes were first withheld as 15% of the payout by the corporations and later settled with other sources of income. When compared to capital gains, dividends were taxed at the marginal tax of private investors, while for corporations owning shares this disadvantage of dividends did not exist.

The quality of financial reporting improved with the enactment, in 1971, of the Law on external financial reporting (*Wet op de Jaarrekening van Ondernemingen*). In an effort to smooth reported profits as well as dividends, firms were also managing their earnings (Hoogendoorn 1985).

The second regime in 1948-1983 is labelled ‘smoothing’ and we predict that firms aim to pay a dividend every year and keep the level constant. As summarized in Table 1, we expect a high probability that firms pay a dividend, and that the dividends will be more stable. As a result, firms will be conservative in paying more dividends when profits rise, and rather add profits to the reserves. Therefore, dividends will be lower. Dividends are also reduced due to various constraints and the negative tax treatment. When firms report a loss the chances of paying dividends are reduced. Compared to the previous regime, profits will be less important, due to the smoothing, while reserves now become a key driver of dividends. Firms were building reserves with the explicit label to pay dividends in times of insufficient profits. Consistent with dividends as evidence of long-term value, in this episode firms paying a dividend still sell at a significant premium. Annual dividends are not related the earnings of

---

<sup>6</sup> Although some firms paid stock dividends, cash remained the dominant form of dividend throughout these periods. In the 1970s, some Dutch (initially only financial) firms began to offer investors a choice between cash and stock dividends (Dorsman 1981; Klaassen 1987; and Van den Burg 1990); such so-called choice dividends subsequently began to be offered by other types of firms.

<sup>7</sup> The law was automatically suspended on January 1<sup>st</sup> 1975.

that year, but the long-term developments of dividends will inform investors about the management perspective on firm value.

### *2.3 International developments: shareholder value and dividends*

Since the 1980s, Dutch firms have been increasingly influenced by international developments. Foreign investors increased their holdings in Dutch firms, and Dutch firms expanded internationally. Following the recessions in the 1970s and early 1980s, the Dutch economy grew hand-in-hand with the world economy, exerting pressure on collaborative structures evolved in the 1960s and 1970s that married capital and labour (De Jong et al. 2010). The influx of foreign shareholders and the ideology of shareholder value maximization imported from Anglo-Saxon countries during this period focused attention on dividend policies that could help firms maximize stock prices by minimizing agency and information costs.

It is instructive to briefly sketch academic developments in dividend policies in the United States. Miller and Modigliani argued in 1961 that dividend policy is irrelevant to firm value under stringent efficient-market assumptions. Later theorists argued that dividends are relevant to shareholder value, giving rise to the theoretical notions of moral hazard agency and adverse selection signalling. The moral hazard agency argument (Jensen and Meckling 1976; Grossman and Hart 1980; Easterbrook 1984; and Jensen 1986) holds that managers are inclined to act out of self-interest at the expense of shareholders, and that the agency costs of this behaviour can be reduced via dividends, that is, firms should pay out, to prevent managers from wasting, excess cash flows. Managers cash constrained after dividend payouts are consequently forced to approach the capital market for additional funding, a disciplining role that results in free cash flow having a positive effect on dividends as firms return high earnings to the financial markets. Concurrently, alternative disciplinary devices reduce the need for dividends, such as leverage, ownership and board structures. Signalling theory maintains that firms can convey to financial markets valuable signals about future prospects (Spence 1974; Bhattacharya 1979; and Miller and Rock 1985). The dividend decision being related to information asymmetry between managers and outside shareholders, the (in)tangibility of assets relates to information asymmetry, tangible assets being easier to value objectively. Interestingly, the emphasis of signalling theory is *not* on the level of dividend vis-à-vis profits, but on the decision whether to pay a dividend.

Anglo-Saxon theories promulgated by financial economists strongly influenced Dutch executives as well as academics' research and teaching, Duffhues (1997), for example, discussing in several chapters of his widely used textbook modern dividend theories absent

from the previous generation of textbooks such as Bouma (1980). In the Netherlands from the 1980s onwards, dividend policies, among others, served to reduce principal-agent costs. In addition, firms aimed to signal the value of their companies by paying out dividends.<sup>8</sup>

While shareholders were satisfied with the smoothed dividends in the 1950s until the 1970s, in the 1980s the shareholder base of Dutch firms started to change markedly, bringing new preferences for firm dividend policies. In the 1980s Dutch institutional investors changed their portfolios to include more stock holdings, compared to their traditional focus on government debt. In addition to the Dutch pension funds, mutual funds, banks and insurance companies, also international institutional investors entered the Dutch market. De Jong, Röell and Westerhuis (2010) describe this transition and show that from hardly any international ownership in the early 1980s, foreign institutional investors owned 37% and 75% of large Dutch firms in 1995 and 2005, respectively. For these investors, dividends are costly, as they incur transaction costs to reinvest dividends to maintain their positions. Moreover, the investors are mainly oriented at shareholder value creation, not at the cash flows from their investments. The disclosure quality of financial reports had improved from the 1970s onwards. With the international investors, Anglo-Saxon ideas about shareholder value creation became prevalent, in particular ideas about agency theory (Jensen and Meckling 1976; Grossman and Hart 1980; Easterbrook 1984; and Jensen 1986) and signalling (Spence 1974; Bhattacharya 1979; and Miller and Rock 1985). These ideas were adopted by Dutch investors and managers (Duffhues 1997).

In Table 1 we describe our predictions for the third regime, ‘agency and signalling’. We predict that dividend policy is characterized by high propensity to pay dividends (a positive signal and reducing agency costs), low dividend payouts and low variation in dividend payments, because of the low levels of dividends. We expect that dividends become symbolic in nature and that earnings and dividends are decoupled as Anglo-Saxon ideas propagated its way through the Dutch economy. Firms reporting losses are less likely to pay a dividend, but profits are no longer key determinants. There will still be a minor role for reserves and liquidity to maintain the dividends. We expect a limited positive effect of paying a dividend, while the level has no value-relevance.

---

<sup>8</sup> Share repurchases remained relatively uncommon in the Netherlands mainly for fiscal reasons, revenues from repurchased shares being treated as dividend income until 2001, when the re-introduction of a new system that taxes a fictional return on wealth eliminated the disadvantage of dividends from a personal tax perspective. Empirical studies of share repurchases show the minor importance of this means of distributing profits (Herst and Rebers 1996; Baltus and Schouten 2000; and Roosenboom et al. 2001).

### 3. Data, variables and methodology

#### 3.1 Data sources

Our sample is composed of Dutch non-financial corporations listed on the stock exchange of Amsterdam from 1903 to 2003. Collecting firm data for one year per five-year period excluding the Second World War yields twenty cross-sections with five-year intervals. Financial and non-financial data were procured from the following sources. The *Gids bij de Prijscourant* contains share and dividend information for all securities listed on the Amsterdam exchange. The *Van Oss Effectenboek*, a contemporary investor manual published annually from 1903 until 1978, include balance sheets, profit and loss statements, share information, directors' names, and information on distribution of profits. The *Tabellen der Laagste en Hoogste Koersen* provides information on stock prices and dividends. For the period 1977 to 2003, we consulted a database of exchange-listed firms of the *Centraal Bureau Statistiek*. Our sample, limited by the inclusion only of firms for which complete information is available for the variables in our analyses for a given year, firms during the early part of the 20<sup>th</sup> century disclosing on a voluntary basis, and some providing only limited, financial data, includes 3,638 firm-year observations for 704 unique firms.<sup>9</sup>

#### 3.2 Variables

A detailed description of the variables used in our study can be found in the appendix. To facilitate comparison over the 20<sup>th</sup> century, we standardized balance sheets and profit and loss statements and transformed all accounting information to modern financial statement structures (for detailed descriptions see Westerhuis and De Jong 2015; and Colvin et al. 2015). The most significant adjustment relates to the nature of early balance sheets, which were compiled before distributing profits. These as well as profit and loss statements are transformed into post-distribution statements, following the description of profit distribution in *Van Oss Effectenboek*, which yield net income and also affect reserves by adding retained earnings.

The dividend measure used in the study is dividend payments, an indicator variable assigned a value of one for a firm that pays a cash or choice dividend, and zero otherwise. Stock dividends are thus excluded. The dividends in a given year are the cash dividends paid out over

---

<sup>9</sup> An exception is the market price of shares, as our sample pertains to firms that are exchange listed. For this variable we allow missing values and we have also collected 2008 values, in order to estimate effects of dividends on future market values.

the profits of that year, i.e. we match profits and dividends although the dividends are paid in the year after the profits are realized.<sup>10</sup> Payout ratio is defined as the amount of cash or choice dividend scaled by free cash flow. The latter metric, according to modern standards, is net income plus depreciation. We opt for this denominator in order to include the amount of cash available for dividend payments. Following standard conventions in the literature, payout ratio is capped at one, which value is also assigned when loss-incurring firms pay dividends. Because published profits (without transformation) as well as economic profitability (with transformation) may have relevance for firms and investors, we include both reported and modern profits.

Firms' reserve position becomes an important resource when profits are insufficient for dividend payments. During the first half of the 20<sup>th</sup> century, many firms held hidden reserves by depreciating assets at a rate that exceeded their decreasing economic value, a conservative practice that yielded deflated asset values and underestimation of equity reserves.<sup>11</sup> Although we cannot measure the actual value of assets, taking recourse to the practice of openly setting minimal and unrealistic values, such as one guilder for a factory, we construct an indicator variable Conservatism for firms that value at least one asset and less than ten guilders.

Firms with preferred shares can pay dividends to both ordinary and preferred shareholders. The probability of dividend payouts tend to be increased by the expectations of preferred shareholders and, when applicable, cumulative nature of dividends, we include an indicator variable for firms with preferred shares. We also include as a control variable for Family firms a dummy variable that takes the value of one if the name of a family is present in the firm name or the board includes two or more members from the same family. We acknowledge the limitation of this metric in that control of a firm can also be exercised through a given family's ownership of shares. Ownership data for Dutch firms is, however, available only from 1992.

### *3.3 Methods*

Our analyses are formulated to identify reasons to pay, and determinants of levels of, dividends. Binomial choice models are employed to understand firms' decisions to pay a dividend or not

---

<sup>10</sup> With respect to interim dividends, we find that they are very rare prior to 1971. When interim dividends are paid we allocate these to the total dividends paid in that particular year, as these dividends are paid over the past six months.

<sup>11</sup> We define reserves as those components of the firm's equity that are regular reserves and retained earnings. Reserves can be negative when losses are significant, i.e. retained earnings are large negative numbers.

to pay a dividend, for each of the three periods. <sup>12 13</sup> Our logit model, in reduced form, is:

$$\text{Log}_e \frac{\pi_{i,t}(\text{Propensity to pay})}{1 - \pi_{i,t}(\text{Propensity to pay})} = \alpha_i + \beta_n X_{i,t} + \varepsilon_{i,t} \quad (1)$$

where Propensity to pay is the choice variable that indicates whether a firm pays dividends, and  $X_{i,t}$  is a vector of explanatory variables. All logit models include corrections for unobserved industry-specific and year-specific effects. Although we do not present results on the industry and year effects, these are important controls, for example for changes in tax and reporting laws that affect all firms alike. We report average marginal effect and standard errors are clustered at the firm level. OLS regressions are used to explain cross-sectional variation in dividend payouts. The dependent variable is the dividend payout ratio. These models are as follows:

$$\text{Payout ratio}_{i,t} = \alpha_i + \beta_n X_{i,t} + \varepsilon_{i,t} \quad (2)$$

where Payout ratio<sub>i,t</sub> is the firm's payout ratio, that is, dividend payment to free cash flow, and  $X_{i,t}$  is a vector of explanatory variables. All OLS models include corrections for unobserved industry and year effects, and standard errors are clustered at firm level.<sup>14</sup> We assess the relevance of our models across periods by reporting both the AIC information criterion (Akaike 1974) and (pseudo or adjusted) R-squared statistics.<sup>15</sup>

To compare the relevance of specific explanatory variables over three time periods, we need to assess the relative explanatory power of the models. To measure the importance of dominant practices, we estimate the same model for each of the three periods, and use Shapely variance-decomposition algorithms to attribute portions of the models' explanatory power to specific factors. This methodology is commonly used in household finance (see Sastre and

---

<sup>12</sup> An alternative approach to find dominant practices is to use switching regression models, where the optimal periodization is determined empirically, based on a pre-specified number of switches. In our view, in this approach the description of the logics may be biased by *ex post* rationalization. Therefore, we define our three periods based on the description of prevailing practices and institutional developments.

<sup>13</sup> In unreported robustness analysis we also analyse the firm's decision to initiates or discontinues paying a dividend. For modelling this choice we use a binominal choice estimation. The findings are consistent with our reported results.

<sup>14</sup> Additionally, we use Tobit regressions, where we jointly model the decision to payout dividends and the exact amount of dividends paid. Our results are robust to this alternatives and the results are available upon request.

<sup>15</sup> We also compare the outcomes of the three periods, i.e. the first and second, as well as the second and third. In order to do this we also pool the data into two subsamples: we combine 1903-1938 with 1948-1983 and we combine 1948-1983 with 1988-2003. We subsequently interact our variables of interest with regime dummies (i.e. a variable equal to 1 if an observation is from the period 1948-1983 or 1988-2003). We subsequently test for differences between coefficients from the different regimes, which is straightforward for OLS regressions (we report *p*-values). For the logit regressions, due to possible non-linearity, we present average marginal effects and test the difference of these marginal effects at the 25<sup>th</sup>, 50<sup>th</sup> and 75<sup>th</sup> percentile of each variable. For the calculation of the appropriate marginal effects we use the delta method, for the test of difference in coefficients we report the Chi-squared test statistic.

Tranoy 2002; Bourguignon et al. 2005; and, of course, Shapley 1953) and has recently been employed in economic history by Colvin et al. (2015).

## 4. Results

### 4.1 Descriptive statistics

Table 2 and Figure 1 describe the evolution of dividend policies over the period 1903-2003.

[Please insert Table 2 and Figure 1 here]

The fraction of dividend-paying firms and payout ratio for both the full sample and dividend-paying firms is shown as well as the percentages of firms that initiate or discontinue dividend payments. For 1903, for example, for which we have 82 firm-years, reported return on equity was, on average, 5%, which equals the average return on equity after correction to modern standards, and free cash flow, on average, 7% of the book value of equity. Thirteen percent of firms reported a loss, 56% paid a dividend, and the average payout ratio for the full sample (only dividend-paying firms) was, on average, 37% (65%), of free cash flow. In 1908, 14% of firms with information for both years initiate, and 2% discontinue, dividend payments, and the remaining 84% of the sample make no adjustment to dividend policy.

Figure 1, which graphically summarizes the evolution of the fraction of dividend-paying firms and average payout ratio, reveals some striking movement. For example, we see upward movement in the percentage of dividend-paying firms (to 74%) until 1918 followed by a decline (27%) until 1933 as the effect of the Great Depression is clearly evident in only one in four firms paying a dividend, which is evidence of the cyclicity of dividends in the first period. Post-war we see a rapid increase (back to 74% in 1948) followed by continued upward movement (88%) until 1963. Some variation is observed, but the norm is to pay a dividend. Payout ratio is relatively high between 1908 and 1938, ranging from 53% and 66% for dividend-paying firms, fairly constant between 1948 (36%) and 1963 (37%), and drops to the lowest average payout ratio in the century in 1983 (19%) before resuming modest upward movement from 1988 (20%) to 2003 (26%).

The descriptive statistics are consistent with the predictions of the three regimes we have identified. Until the 1940s, with exception of the 1930s economic crisis, dividend-paying firms are numerous and pay out most of their profits. With the post-Second World War

emphasis on smoothing policies, most firms pay dividends. By the late 1980s, dividend paying seems almost symbolic, with many firms paying modest dividends. Taxation does not seem to influence long term dividend trends. In the years before the Second World War dividend taxes gradually increased from 2% to 12% for all shareholders. After the war, higher income tax rates applied for private investors, while most corporate shareholders faced no tax disadvantage. These tax rates cannot explain the strong reduction in dividends in the 1930s, as well as relatively high dividends in the 1950s and 1960s, compared to subsequent decades.

Table 3 and Figure 2 document the volatility of profitability and dividends over time. Panel A of Table 3 reports per period the mean values for payout and profitability measures for the five pooled cross-sections.

[Please insert Table 3 and Figure 2 here]

For each firm, we calculate, and present the median of, these standard deviations for the five-period windows (at least two firm-year observations per cross-section are required to be included in this analysis). Lower values imply that firms smooth their dividends and profits. It should be noted that these descriptives are an illustration of our arguments. Ideally, smoothing is measured using annual data, and our five-year intervals serve as an approximation that has to be interpreted with care.

For the period 1903-1923, using data for 1903, 1908, 1913, 1918, and 1923, we obtain an average payout of 8% of equity, a return on equity of 12%, and a free cash flow of 15%, the latter two according to modern standards, with median values of standard deviations of 2.00%, 3.32%, and 4.47%, respectively. Our findings for median volatilities are summarized in Figure 2, in which we observe median values of the standard deviations of payout, return on equity, and free cash flow to have increased until 1938, and values reaching a high towards the end of the first period, which corresponds to the turbulent years before the Second World War. Increasing volatility in earnings was passed to investors in dividend policies that did not yet incorporate smoothing and dividends followed the business cycle. It is interesting to note that in the recession of the 1970s and early 1980s we do not witness a similar increase in volatility. As mentioned, these results need to be interpreted with care, because we rely on five-year intervals.<sup>16</sup>

---

<sup>16</sup> Unfortunately, our data does not permit more accurate estimation of dividend stability as done in Leary and Michaely (2012) or Fliers (2019).



To show the effects of losses and profits on dividends, Panel B of Table 3 reports, for each period, the percentage of firms that pay dividends and payout ratio for different profitability groups. We first create profitability groups based on free cash flow values. The first group, ‘loss,’ consists of observations that have incurred a loss. The remaining observations are assigned to quintiles, with observations grouped according to increasing free cash flow values. Because we account for trends in profits by adding observations annually to a profitability group, the number of observations is not constant across quintiles. Per period average free cash flow, percentage of dividend-paying firms, and payout ratio are reported for each profitability group. That payout ratio is set to one for loss firms that pay a dividend accounts for the fraction of loss-incurring firms that pay dividends being equal to the payout ratio.

The percentage of dividend-paying firms increases with profitability up to 1938, the payout ratio until quintile three, and then decreases. The more profitable a firm, the more likely it will pay dividends, which is line with typical statutory arrangements. That payout ratio is increasing with profitability can be partially explained by firms’ endeavour to pay promised dividend amounts and statutory requirements to add to reserves. Moving through the quintiles for the period 1948-1983, we observe an increasing fraction of dividend-paying firms, and increase in payout ratio only until the second quintile, with increasing profitability. These findings are in line with expectations based on dividend smoothing, where dividends tend to be paid by most firms. For the period 1988-2003, we find the percentage of dividend-paying firms to be high and payout ratio low independent of profitability group; even 11% of loss-incurring firms, compared to 2%-3% in earlier periods, pay dividends. Dividend policy is clearly largely independent of profitability or profitability levels during this period. In summary, the descriptive statistics show that there is merit in subdividing the 20<sup>th</sup> century into separate regimes with respect to dominant practices regarding corporate dividend policy. Subsequently studying the determinants of dividend policy will help to reinforce the shifts between these regimes.

#### *4.2 Determinants of dividends*

To better understand the determinants of dividend payments, we first undertake a descriptive analysis of each of the three periods. Table 4 reports mean and median values for our variables, while Table 5 presents results based on comparing the dividend policy determinants for paying and non-paying firms; that is, we provide the means and results of *t*-tests based on the means.

[Please insert Tables 4 and 5 here]

The results in Table 4 demonstrate that over time the firms have become more profitable, levered and larger, while the fraction of family firms has fallen, in particular in the final period. Because these characteristics are potentially determinants of dividend policy, it is important to control for these differences in multi-variate models. Table 5 reveals that firms that do and do not pay dividends differ in many respects, in all three periods. Again, this is a reason to conduct multi-variate models and focus the tests of our predictions also on the regression models, rather than bi-variate comparisons. Results of multivariate analyses are reported in Table 6. Table 6 elucidates the question of why firms pay dividends, Panel A reporting regression coefficients and *p*-values per variable and numbers of observations, pseudo R-squared, and AIC information criterion per model. Panel B reports the differences between the three subsamples and Panel C reports the results of the Shapely variance-decomposition based on the logit regressions in Panel A, showing each variable's contribution to the model's overall explanatory power.

[Please insert Table 6 here]

Table 6 shows the average marginal effects for the determinants of the decision to pay dividends across the distribution of each variable.<sup>17</sup> For the period 1903-1938, we find the decision to pay dividends to be determined, as expected, largely by profitability; that is, we estimate a significant positive relation for free cash flow and significant negative effect of reported losses, both at the 1% level. In other words, until the 1940s Dutch firms paid dividends according to shareholder demands, i.e. when profits were sufficient and refrained from paying dividends when losses were incurred. Reserves were not used to pay dividends when profits were insufficient. . In line with the notion that cash is needed to pay dividends, we observe a significant positive effect for liquidity on the decision to pay dividends (significant at the 1% level). These results are consistent with the notion of dividends being determined by statutory arrangements. We find that for each additional percentage point of free cash flow to total assets, that is, moving from 7% to 8%, the average firm is 120% more likely, a firm that reports a loss is 50% less likely than the average firm, to pay a dividend. We control for other variables and

---

<sup>17</sup> However, reporting average marginal effects can yield inconsistent conclusions at different points in the distribution, which is why in Table 6 Panel C we evaluate the marginal effects at different points of the distribution (25th percentile, median and 75th percentile). All our (primary) results are consistent.

find that size and net working capital also influence dividend policies.<sup>18</sup>

The results of the variance-decomposition, also reported in Panel B, show the free cash flow and loss variables contribute two-thirds of the explanatory power of the model during this period (24% of the  $R^2$  of 36%). Overall, our results for the first period are in line with firms meeting shareholders' demands for dividends as fraction of earnings and relatively high payouts, which can be used for consumption and as credible evidence on firm profitability.

For the period 1948-1983, the two profitability variables are similar in both sign and significance level. According to Panel C we find a significantly lower value for the coefficient of free cash flow, however, and the added value of this variable is also much lower according to the variance-decomposition. Our finding that reserves increase the likelihood that a firm will pay a dividend (significant at the 1% level) can be explained by the introduction of smoothing to dividend policy, which views reserves of previously retained earnings as an additional source of dividend payments. As mentioned before, in this period, dividend policy was referred to as reservation policy, in line with shareholders' changed demands for stable instead of high payouts. The change in the coefficient for reserves between the first and second period is significant at the 1% level (Panel C). We find that for each additional percentage point of reserves relative to firm assets, the average firm is about 60% more likely to pay a dividend. Panel B shows the free cash flow, loss, and reserves variables contribute most to the explanatory power of the model during this period. For our control variables we find again that larger firms pay more dividends.

From 1988 to 2003, profitability still influences the decision to pay dividends, but now through only the negative effect of losses. That firm profitability no longer yields a significant effect is striking and consistent with the idea of earnings decoupling. As mentioned before, disclosure has improved and the shareholder base of Dutch firms is now comprised of (international) institutional investors, with less appetite for dividends. As in the previous period, we find reserves to be positively related to the decision to pay dividends (significant at the 1% level). The significant (at the 10% level) positive sign for liquidity during this period can be explained by free cash flow theory, in which liquidity represents actual cash, that is, cash not yet used in a project, with a positive net present value, that should be returned to the firm's shareholders. For the control variables we find that large firms, family firms and firms

---

<sup>18</sup> We have no explanation for the negative effect of net working capital, other than that the effect may be mechanical, because unpaid dividends are often included in the short term debts. The positive size effect is consistent with the international literature (e.g. Fama and French 2001).

with less leverage are more inclined to pay dividends.<sup>19</sup> Panel B shows an increase in the contributions of firm size, free cash flow, losses, and reserves to the explanatory power of the model during this period.

We find in Panel B of Table 6 that the determinants of the choice to pay dividends or not to pay dividends significantly changed from 1903-1938 to 1948-1983. These changes are substantially less significant for the second regime shift. However, this is largely due to the fact that in the last period paying a dividend became the norm. This finding is consistent with catering towards the new owners, and in particular a confirmation of earnings decoupling in the regime shift between 1948-1983 and 1988-2003.

Although our main goal is to explain why firms pay dividends, Table 7 responds to the question of the amounts of dividend payments across the three periods.

[Please insert Table 7 here]

The variance-decomposition in Panel B shows the largest contribution to the explanatory power of the model for payout ratio to be from free cash flow, followed by tangibility. We observe an expected negative relationship (significant at the 5% level) between free cash flow and payout ratio, because the ratio scales by free cash flow and dividends do not increase proportionally to free cash flow. Our finding that leverage decreases payout ratio (significant at the 1% level) suggests that commitments to pay increased interest and face value make managers cautious about simultaneously increasing payouts. We find tangibility to have a negative relation with payout ratio (significant at the 5% level), which reflects a firm's commitment of more capital to financing fixed assets, an important consideration, especially during periods of considerable investment. For the 1948-1983 period, Panel B shows the largest contribution to the explanatory power of the model for payout ratio to be made by free cash flow, followed by tangibility, firm size, and leverage. Liquidity was of little importance during this period. We find dividend payout to decrease with firm size (significant at the 5% level, and the difference

---

<sup>19</sup> Our finding that family firms are more likely to pay dividends is significant (at the 1% level) for the first time, but the relative number of family firms is lower than during the previous two periods, and family members of the founder are less likely to be on the board. We thus perceive this dummy as a proxy for ownership by the founding family, which is likely to rely on dividends as a form of income, and therefore assume it to function as a corporate governance mechanism. In line with modern finance theory, we interpret our finding of a significant negative relation of leverage with the decision to pay dividends to imply that leverage functions as a corporate governance mechanism (Easterbrook, 1984). Specifically, there is a substituting effect between leverage and dividends; paying dividends reduces the cash over which management has discretion, and thus agency costs. Increased leverage also reduces cash (due to increased interest payments and face value) that would otherwise be at the disposal of management. This substituting effect should result in a negative sign.

between the coefficient of the first and second period is significant at the 1% level), especially in the post-war period characterized by heavy investments in rebuilding firms and the economy. A significantly negative (at the 5% level) relationship is observed between free cash flow and payout ratio. That an increase in reserves reduces the payout ratio leads us to assume an inverse causality, that dividends decrease reserves. Our finding that leverage decreases payout ratio (significant at the 1% level) suggests, as noted above and not surprising during a period in which dividend smoothing was perceived as extremely important, that commitments to pay increased interest and face value makes managers cautious about simultaneously increasing payouts. We find that tangibility decreases the payout ratio (significant at the 5% level). Firm size, leverage, and net working capital were no longer significant, and profitability was no longer relevant to explaining payout ratio, in the 1988-2003 period. Our finding that reserves increased payout ratio (significant at the 5% level) suggests that firms used reserves to boost dividends during this period, and our finding that liquidity increased payout ratio (significant at the 5% level) can be explained, as noted above, by free cash flow theory, in which liquidity represents cash not yet allocated to a project, with a positive net present value, that should be returned to firm shareholders. Tangibility has a significant (at the 5% level) negative relation with payout ratio. Increasing tangibility increases long-term capital commitments, but reduces information asymmetry about the use of capital and consequently the need for signalling. Panel B acknowledges tangibility to be the most important variable in this period and contribute most to the model's explanatory power. So diminished was the importance of free cash flow that dividends could be considered to be decoupled from profitability.

#### *4.3 Market price consequences of dividends*

Our analyses thus far have explained how changes in shareholder preferences shape dividend policies using a set of variables based on three distinct practices that dominated the 20<sup>th</sup> century Dutch economy. These analyses approach dividend policy from the perspective of corporate decision-makers, but dividend policy is also reflected upon by shareholders via the stock market valuation of firms (Baker and Wurgler 2004a, 2004b). We measure the relation between dividend policy and market valuation using the dividend payment dummy and payout ratio in each of the five-year intervals over 1903-2003, and the market-to-book ratio of equity five years later, i.e. over 1908-2008. This lead-lag structure ensures that the dividend payments over year  $t$ , which will be publicly announced in year  $t+1$ , can be incorporated in the market valuations (measured in year  $t+5$ ). We obviously lose observations, due to the absence of market value information five years after the year over which the dividend was paid.

We measure the market value of equity relative to book value. For the period before 1973, we calculate the firm's stock price as the average of its highest and lowest quotation in a particular year.<sup>20</sup> For the period after 1973, we use the year-end stock price of the firm as found in Reach or Datastream. These stock prices are then multiplied by the number of shares outstanding (obtained from the same source) and divided by the book value of the firm's equity. Although shareholder value creation became a key goal of firms in the 1980s, market valuation is a meaningful measure of shareholder perceptions of dividends in the entire 20<sup>th</sup> century.

The effect of dividend policy on firm value is investigated in Table 8, which presents the five year forward relation between dividend policy and market valuation. Panel A investigates the effect of dividend payments, Panel B of payout ratio, for dividend-paying firms.

[Please insert Table 8 here]

For the period 1903-1938, during which dividends were dependent on statutory arrangements and firm profits, we find a significant (at the 1% level) positive effect of the decision to pay dividends and payout ratio on market-to-book valuation. The economic effects are large, showing that paying a dividend corresponds with an increase in value by 25.4% of book equity. We argue that Table 8 reports the firm characteristics of the shares that are in relatively high demand by investors. That is firms with a higher market valuation relative to their book value have seen an increase in demand for their share (i.e. higher price), when they paid a dividend during the first regime. More precisely, firms that paid a dividend during this were characterized by an increase in demand for their shares (i.e. higher price). Paying dividends thus provides information about firm performance, and the fraction of distributed earnings increases firm value. This finding is intuitive since any disclosure of financial information during this period was fully voluntary.

Results for the 1948-1983 period are consistent with the notion of smoothing dividends and heavy investment after the Second World War by firms with limited access to capital. Recalling that financial reporting improved significantly after 1970, we find dividend payments to continue to have a significant positive and the payout ratio to now have a significantly

---

<sup>20</sup> In the rare cases where the firm's highest (or lowest) quotation is missing due to low liquidity, we assume the remaining quotation is the actual price. We acknowledge that our measurement of the firm's market values in these earlier years is a proxy for the end-of-year prices, which is affected by the use of the high-low averages and low liquidity. As a result there is a potential bias in the point estimate and we caution the reader in interpreting our results for the market-to-book analysis.

smaller, yet still positive, effect on market-to-book. Whether or not dividends are paid thus provides information about firm performance. Similarly, dividend amounts become less informative about firm value with smoothing, but still have a positive effect on value.

For the period 1988-2003, we find no significant relation between the decision to pay dividends nor the payout ratio and market-to-book. Tables 1 and 2 reported the fraction of dividend-paying firms to be high and payout ratio low. This explains the insignificance of dividend payments and payout ratio, paying a small dividend having become the norm, but also having become a symbolic action with little informational value regarding a firm's prospects. Paradoxically, signalling theory has boosted the number of dividend-paying firms such that signalling no longer discriminates the quality of firms.<sup>21</sup>

We conclude from the foregoing results that dividend policy has a significant effect on firm valuation, and, most importantly, that the results for the different periods are consistent with the changing shareholders' preferences.

## 5. Conclusions

We attempt to understand the dividend policies of Dutch firms over the course of the 20<sup>th</sup> century by answering three related questions. Why do firms pay dividends? In what amounts do firms pay dividends? What are the value effects of dividend policies? We find the determinants of the answers to these questions are by no means be stable over time.

Our study documents significant changes in dividend policies over the course of the 20<sup>th</sup> century, where firms cater towards the demands of shareholders. We identify three distinct dividend policy regimes, and each regime is dictated by shareholders preference and an economic logic that fits with its day and age. The fraction of dividend-paying firms is volatile and payout ratio high in the pre-war years, because shareholders as residual claimants receive most of the net profits. In the post-war period, we observe stable dividend policies and somewhat diminished dividend payments, where shareholders become more distant to the firms and prefer a smooth income stream from their holdings. From the early 1980s onward, dividend payments seem to be the norm, the amount of profits distributed much smaller, while shareholders become more interested in stock returns and dividend payments become more symbolic.

---

<sup>21</sup> Our results contradict the findings of Westphal and Zajac (1998), who show that stock markets react favourably to symbolic improvements of governance, using US data on managerial incentive plans. It should be noted that we measure the longer-term relations between dividend and market value, where signalling theories are better tested using short-term market reactions to announcement via event studies.

Although our analyses cover a lengthy period, we acknowledge the limitation of relying on data from a single country. We nevertheless believe our results contribute to debates about long-term developments in dividend policies. We recognise that our findings are perhaps difficult to relate to previous historical and contemporary literature because of differences in data, time span and methodology. However, our analysis for the most recent period is consistent with observations symbolic dividends and earnings decoupling (Zajac and Westphal 2004, Brav et al. 2005). More profoundly, our finding strongly relates to the catering effects documented by Baker and Wurgler (2004a, 2004b), who show that dividend policies during the period 1963-2000 followed shareholders' appetite for catering based on relative market valuations of (non)dividend-paying stocks. This conclusion also yields questions for further research. For example, do shareholders or firm managers take the initiative to adjust dividend policies? And, which firms are early adopters of the new policies and which firms are late or even non-adopters of the changes in dividend policy? These questions can only be answered with additional data and analyses using a higher frequency of observations.



## References

- Acheson, Graeme, Charles R. Hickson, John D. Turner and Qing Ye. "Rule Britannia! British Stock market returns, 1825-1870." *Journal of Economic History* 69, no. 4 (2009): 1107-1137.
- Akaike, Hiroyuki. "A new look at the statistical model identification." *IEEE Transactions on Automatic Control* 19, no. 6 (1974): 716-723.
- Baker, Malcolm, and Jeffrey Wurgler. "Appearing and disappearing dividends: The link to catering incentives." *Journal of Financial Economics* 73, no. 2 (2004a): 271-288.
- Baker, Malcolm, and Jeffrey Wurgler. "A catering theory of dividends." *The Journal of Finance* 56, no. 3 (2004b): 1125-1165.
- Baltus, C.F.A., and M.B.J. Schauten. "Inkoop van eigen aandelen op de Amsterdamse effectenbeurs." *Tijdschrift Financieel Management* 20, no. Januari/Februari (2000): 35-43.
- Bhattacharya, Sudipto. "Imperfect information, dividend policy, and "The bird in the hand" fallacy." *The Bell Journal of Economics* 10, no. 1 (1979): 259-270.
- Black, Fischer. "The dividend puzzle." *The Journal of Portfolio Management* 2, no. 2 (1976): 5-8.
- Bouma, Johannes L. *Leerboek der bedrijfseconomie, Deel 2 De theorie van de financiering van ondernemingen*, 2nd edition. 's-Gravenhage: Delwel Uitgeverij B.V., 1980.
- Bourguignon, F., A.-S. Robilliard and S. Robinson. *10 Representative versus real households in the macroeconomic modeling of inequality*. In T.J. Kehoe, Srinivasan, T.N., & Whalley, J. (Eds.). *Frontiers in applied general equilibrium modeling*. (pp. 219-254). Cambridge: Cambridge University Press, 2005.
- Braggion, Fabio, and Lyndon Moore. "Dividend policies in an unregulated market: The London stock exchange, 1895–1905." *Review of Financial Studies* 24, no. 9 (2011): 2935-2973.
- Brandsma, Roland P.C.W.M. *Capita selecta dividendbelasting*. Ph.D. thesis, Rijksuniversiteit Leiden, 1995.
- Brav, Alon, John R. Graham, Campbell R. Harvey, et al. "Payout policy in the 21st century." *Journal of Financial Economics* 77, no 3 (2005): 483-527.
- Buchanan, Norman S. "Theory and practice in dividend distribution." *The Quarterly Journal of Economics* 53, no. 1 (1938): 64-85.
- Colvin, Christopher. L., Abe de Jong, and Philip T. Fliers. "Predicting the past: Understanding the causes of bank distress in the Netherlands in the 1920s." *Explorations in Economic History* 55, no. 1 (2015): 97-121.
- De Jong, Abe, Ailsa Röell, and Gerarda Westerhuis. "Changing national business systems: Corporate governance and financing in the Netherlands, 1945–2005." *Business History Review* 84, no. 4 (2010): 773-798.

- De Jongh, J.G. *De reservevorming der Nederlandsche Naamlooze Vennootschap*. Nederlandsche Handels-Hoogeschool, Rotterdam, 1919.
- De Lange, A.T. *Beleidselementen in een dynamische financierings-theorie: een bedrijfseconomische studie van enige aspecten van het financieringsbeleid*. Bedrijfseconomische Monographieën, No. 27. Leiden: Stenfert Kroese, 1957.
- Dorsman, A.B. *Stock-keuzedividenden*. In J.W.R. Schuit, P.H.A.M. Verhaegen and J.K. Van Vliet (Eds.), In *Financiering en belegging, stand van zaken anno 1981* (105-113). Rotterdam: Erasmus Universiteit, 1981.
- Duffhues, Piet J.W. *Ondernemingsfinanciering en vermogensmarkten*, Deel 2 (1st edition). Groningen: Wolters-Noordhoff, 1997.
- Easterbrook, Frank H. "Two agency-cost explanations of dividends." *The American Economic Review* 74, no. 4 (1984): 650-659.
- Fama, Eugene F., and Kenneth R. French. "Disappearing dividends: changing firm characteristics or lower propensity to pay?" *Journal of Financial Economics* 60, no. 1 (2001): 3-43.
- Fliers, PH. T. (2019). What is the relation between financial flexibility and dividend smoothing?. *Journal of International Money and Finance*, 92, 98-111.
- Grossman, Sanford J., and Oliver D. Hart. "Takeover bids, the free-rider problem, and the theory of the corporation." *The Bell Journal of Economics* 11, no. 1 (1980): 42-64.
- Herst, A.C.C., and E.H. Rebers. "Inkoop van eigen aandelen in Nederland." *Theorie vs Praktijk* 100, no. 1190 (2000): 174-180.
- Hoogendoorn, Martin N. "Winstegalitatie ('Income smoothing')." *Maandblad voor Accountancy en Bedrijfseconomie* 59, no. 7 (1985): 271-289.
- Jensen, Michael C. "Agency costs of free cash flow, corporate finance, and takeovers." *The American Economic Review* 76, no. 2. (1986): 323-329.
- Jensen, Michael C., and William H. Meckling. "Theory of the firm: Managerial behavior, agency costs and ownership structure." *Journal of Financial Economics* 3, no. 4 (1976): 305-360.
- John, Kose, and Joseph Williams. "Dividends, dilution, and taxes: A signalling equilibrium." *Journal of Finance* 40, no. 4 (1985): 1053-1070.
- Klaassen, A. "Keuzedividend van banken." *Bank- en Effectenbedrijf* 321, (1987): 149-153.
- Koert, Johan A. *Winstverdeeling bij Nederlandsche naamlooze vennootschappen*. Ph.D. thesis, Nederlandsche Handels-Hoogeschool at Rotterdam, Wageningen: H. Veenman & Zonen, 1934.
- Lintner, John. "Distribution of incomes of corporations among dividends, retained earnings, and taxes." *The American Economic Review* 46, no. 2 (1956): 97-113.
- Meij, J.L., and P.M.M.H. Snel. *Leerboek der bedrijfseconomie, Afdeling 1 Leer van de financiering*, 6th edition. 's-Gravenhage: N.V. Uitgeversmaatschappij v/h G. Delwel, 1964.
- Miller, Merton H. "Debt and taxes." *Journal of Finance* 32, no. 2 (1977): 261-275.

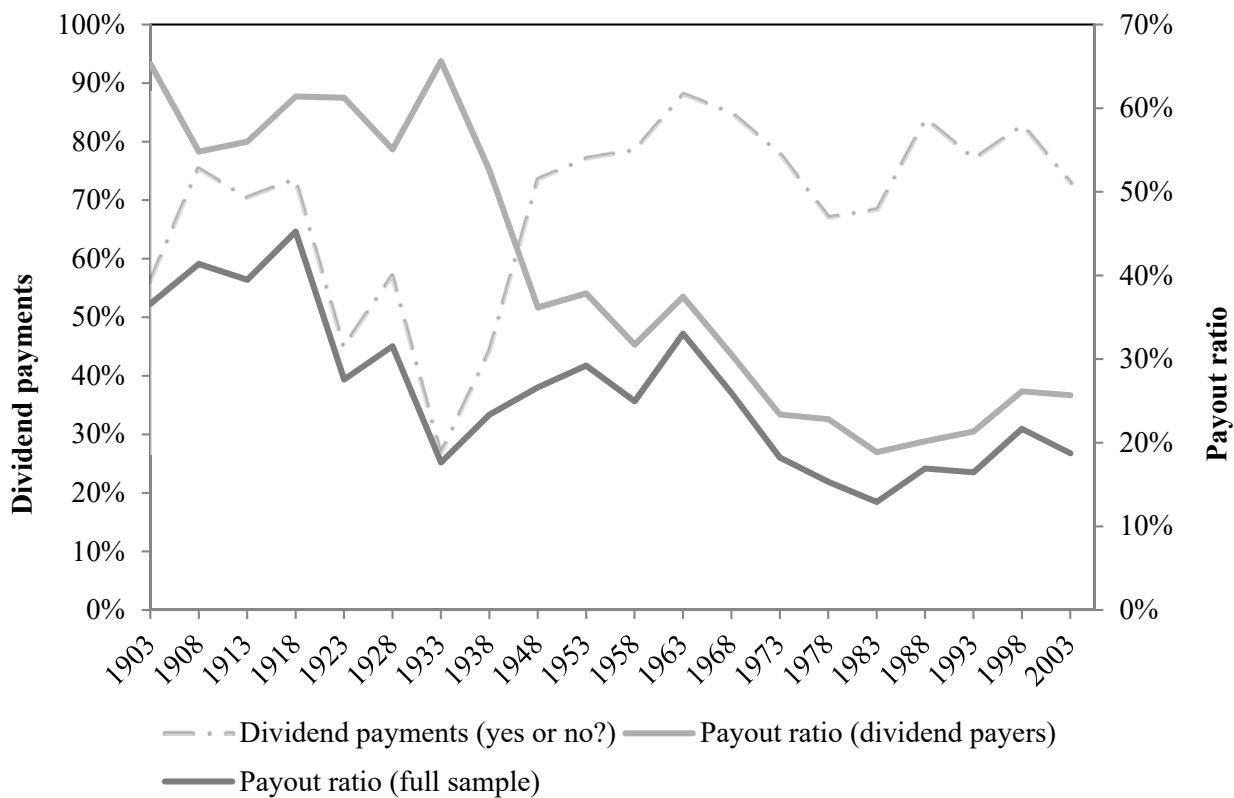
- Miller, Merton H., and Franco Modigliani. "Dividend policy, growth, and the valuation of shares." *The Journal of Business* 34, no. 4 (1961): 411-433.
- Miller, Merton H., and Kevin Rock. "Dividend policy under asymmetric information." *Journal of Finance* 40, no. 4 (1985): 1031-1051.
- Modigliani, Franco, and Merton H. Miller. "Corporate income taxes and the cost of capital: A correction." *The American Economic Review* 53, no. 3 (1963): 433-443.
- Moortgat, Leentje, Jan Annaert, and Marc Deloof. "Investor protection, taxation and dividend policy: Long-run evidence 1838-2012." *Journal of Banking and Finance* 85 (2017): 113-131.
- Myers, Stewart C. "The capital structure puzzle." *Journal of Finance* 39, no. 3 (1984): 574-592.
- Polak, Nico J. *Eenige grondslagen voor de financiering der onderneming*, 3rd edition. Haarlem: De Erven F. Bohn, 1923.
- Roosenboom, P.G.J., A.P. Gorjaev, and A. van den Beemt. Aandeleninkoop nog niet gewaardeerd. *Economisch Statistische Berichten* 86, no. 4296 (2001): 184-185.
- Rutterford, Janette. "From dividend yield to discounted cash flow: A history of UK and US equity valuation techniques." *Accounting, Business & Financial History* 14, no. 2 (2004): 115-149.
- Sastre, Mercedes, and Alain Trannoy. "Shapley inequality decomposition by factor components: Some methodological issues." *Journal of Economics* 9, supplement 1 (2002): 51-89.
- Shapley, Lloyd S. *A Value for N-person games*. In H.W. Kuhn, and A.W. Tucker (eds.), *Contributions to the theory of games - II, Annals of Mathematics Studies*, vol. 28, 307-317, Princeton, NJ: Princeton University Press, 1953.
- Sluyterman, Keetie E. *Dutch enterprise in the 20th century: Business strategies in a small open country*. Abingdon: Routledge, 2005.
- Sociaal-Economische Raad (SER). *Advies inzake de verlenging van de dividendbeperking*. Publicaties van de Sociaal-Economische Raad no. 8, 1953.
- Spence, Michael. *Market signalling*. Cambridge, MA: Harvard University Press, 1974.
- Turner, John D., Qing Ye, and Wenwen Zhan. "Why do firms pay dividends?: Evidence from an early and unregulated capital market." *Review of Finance* 17, no. 5 (2013): 1787-1826.
- Van Berkum, Petrus P. "Kapitaalvorming in de onderneming." *Economie* 9, no. 1-2 (1943): 1-19.
- Van Berkum, Petrus P. "Theorie van dividendpolitiek." *Economie* 12, no. 6-7 (1948): 277-285.
- Van den Burg, M.H.J. "Overwegingen rond keuzedividend." *Tijdschrift Financieel Management* 2, (1990): 53-64.
- Van Keep, Adrianus C.M. *De dividendpolitiek, Een onderzoek naar de bedrijfseconomische tendenties*. (Vol. XVII). Leiden: H.E. Stenfert Kroese's Uitgevers-Maatschappij N.V, 1950.

- Van Zanden, Jan L. *The economic history of the Netherlands 1914-1995: A small open economy in the 'long' twentieth century*. London: Routledge, 1998.
- Westerhuis, Gerarda, and Abe de Jong. *Over geld en macht: Financiering en corporate governance van het Nederlandse bedrijfsleven*. Bedrijfsleven in Nederland in de Twintigste Eeuw (BINT), Vol. 7. Amsterdam: Uitgeverij Boom, 2015.
- Westphal, James D., and Edward J. Zajac. "The symbolic management of stockholders: Corporate governance reforms and shareholder reactions." *Administrative Science Quarterly* 43, no. 1 (1998): 127-153.
- Wilbur, Donald E. "A study of the policy of dividend stabilization." *Harvard Business Review* 10, no. 3 (1932): 373-381.
- Zajac, Edward J., and James D. Westphal. "The social construction of market value: Institutionalization and learning perspectives on stock market reactions." *American Sociological Review* 69, no. 3 (2004): 433-457.
- Zeff, Stephen A., Frans van der Wel, and Kees Camfferman. *Company financial reporting: A historical and comparative study of the Dutch regulatory process*. New York: North-Holland, 1992.

## Appendix: Variable descriptions and definitions

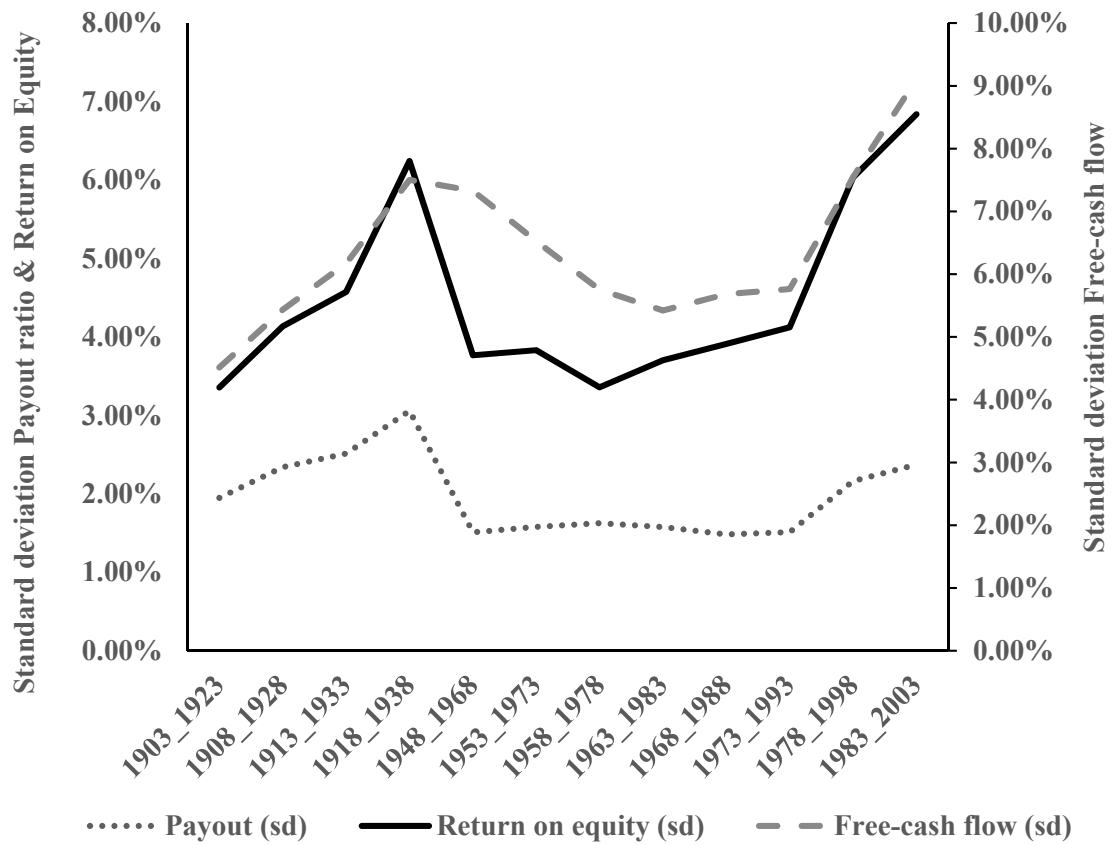
Variable	Unit	Definition
Dividend payments	Dummy	Dividend payments score 1 if the firm pays a dividend (free cash flow), and otherwise 0.
Payout ratio	Ratio	Dividends paid to free cash flow
Return on Equity (modern)	Ratio	Net profit (modern) to total equity
Return on Equity (reported)	Ratio	Net profit (as reported) to total equity
Free cash flow (modern)	Ratio	Free cash flow (modern) to total equity
Reserves	Ratio	Equity reserves and reserves from retained earnings to total assets
Losses	Dummy	Losses (reported) scores 1 if the firm reports a loss, and otherwise 0.
Leverage	Ratio	Total debt to total assets
Net working capital	Ratio	Current assets minus current liabilities tot total assets
Liquidity	Ratio	Current assets minus inventories to total assets
Tangibility	Ratio	Fixed assets to total assets
Firm size	Guilders	Total assets (in millions) corrected for inflation (base year 2003)
Conservatism	Dummy	Conservatism scores 1 if the firm depreciates fixed assets to values below 10 guilders, and otherwise 0.
Market-to-Book	Ratio	Market value of equity to book value of equity
Asset Growth (past 5 years)	Ratio	5-year compounded growth rate
Asset Growth (next 5 years)	Ratio	Future 5-year compounded growth rate
Family firm	Dummy	Family firm scores 1 if the firm has either two or more board members from the same family or a family name in the current or former firm name, and otherwise 0.
Board size	Continuous	Number of board members
# of interlocks with banks	Continuous	Number of interlocks with a bank
# of interlocks with firms	Continuous	Number of interlocks with another firm
Preferred shares	Dummy	Preferred shares score 1 if the firm has preferred shares outstanding, and otherwise 0.

**Figure 1: Dividend payments and payout ratio**



See Table 2 for details.

**Figure 2: Standard deviation of profitability and dividends**



See Table 3 for details.

**Table 1: Dividend regimes**

	<b>Statutory formula 1903-1938</b>	<b>Smoothing 1948-1983</b>	<b>Agency and signaling 1988-2003</b>
<u>Dividend</u>			
Probability of payout	Cyclical	High	High
Payout ratio (paying firms)	High	Medium	Low
Volatility of dividends	High	Low	Low
<u>Determinants to pay dividends: profits</u>			
Loss reported	--	--	-
Level of profitability	++	+	0
<u>Other determinants to pay dividends</u>			
Reserves	0	++	+
Liquidity	+	+	+
<u>Value effects of dividends</u>			
Paying dividends	++	++	+
Payout ratio	++	0	0



**Table 2: Descriptive statistics of dividend policy and profitability measures**

Year	N (full sample)	Profitability		Dividend payments (yes or no?)			Payout ratio			
		Return on Equity (modern)	Return on Equity (reported)	Free cash flow (modern)	Losses (reported)	Firms that pay dividends	Firms that start paying dividends	Firms that quit paying dividends	Payout ratio for dividend payers	Payout ratio for full sample
1903	82	5%	5%	7%	13%	56%	n.a.	n.a.	65%	37%
1908	98	7%	7%	10%	9%	76%	14%	2%	55%	41%
1913	78	8%	8%	12%	10%	71%	6%	4%	56%	39%
1918	152	12%	12%	15%	9%	74%	3%	5%	61%	45%
1923	271	1%	-1%	6%	27%	45%	3%	14%	61%	28%
1928	269	8%	7%	12%	11%	57%	17%	11%	55%	32%
1933	249	-1%	-4%	2%	41%	27%	5%	36%	66%	18%
1938	259	6%	4%	10%	19%	44%	21%	7%	53%	23%
1948	258	11%	10%	18%	4%	74%	16%	3%	36%	27%
1953	303	8%	7%	17%	11%	77%	7%	3%	38%	29%
1958	234	11%	7%	20%	4%	79%	6%	11%	32%	25%
1963	271	8%	8%	18%	8%	88%	8%	3%	37%	33%
1968	233	8%	8%	18%	8%	85%	4%	9%	31%	26%
1973	168	7%	8%	18%	10%	78%	3%	13%	23%	18%
1978	137	6%	6%	19%	16%	67%	6%	22%	23%	15%
1983	108	5%	5%	22%	14%	69%	12%	19%	19%	13%
1988	112	12%	12%	28%	8%	84%	15%	4%	20%	17%
1993	105	9%	9%	26%	16%	77%	4%	11%	21%	16%
1998	140	20%	20%	37%	9%	83%	9%	2%	26%	22%
2003	111	4%	4%	23%	27%	73%	5%	9%	26%	19%
Total	3,638	7%	7%	16%	14%	68%	9%	10%	39%	26%

This table contains descriptive statistics for Dutch non-financial firms listed on the stock exchange of Amsterdam during the period 1903-2003, which consists of 20 cross-sections of five-year intervals. For each cross-section, we report the number of observations and the fraction or mean for all variables mentioned on the top row of the table. For the profitability variables, we mention the return on equity (modern), return on equity (reported), free cash flow (modern) and losses (reported). The dividend policy measures are separated for dividend payments and payout ratio. Dividend payments consist of 1) firms that pay dividends, which are firms that pay dividends, 2) firms that start paying dividends are firms that did not pay in the previous period but do in this period, and 3) firms that quit paying dividends are firms that did paid in the previous period but do not in this period. Payout ratio consists of payout ratio for dividend payers and payout ratio for the full sample. Definitions of the variables are provided in Table 1 of the appendix.

**Table 3: Volatility and distribution of profitability and dividends**

<b>Panel A Averages and standard deviation of profitability and dividends</b>							
Period		Payout ratio/Total equity	Return on Equity (modern)	Free cash flow (modern)	Payout ratio standard deviation	Return on Equity (modern) standard deviation	Free cash flow (modern) standard deviation
	N	mean	mean	mean	p50	p50	p50
1903-23	212	8%	12%	15%	2.00%	3.32%	4.47%
1908-28	256	9%	13%	16%	2.24%	4.12%	5.48%
1913-33	258	9%	14%	16%	2.45%	4.58%	6.16%
1918-38	320	9%	14%	16%	3.00%	6.24%	7.48%
1948-68	722	6%	11%	20%	1.41%	3.74%	7.35%
1953-73	677	6%	10%	21%	1.41%	3.87%	6.56%
1958-78	560	5%	10%	21%	1.73%	3.32%	5.74%
1963-83	458	5%	10%	22%	1.41%	3.74%	5.39%
1968-88	399	5%	11%	24%	1.41%	3.87%	5.66%
1973-93	318	5%	13%	27%	1.41%	4.12%	5.74%
1978-98	325	7%	16%	31%	2.24%	6.00%	7.55%
1983-03	296	7%	17%	34%	2.45%	6.86%	9.11%

**Panel B Profitability, dividend payments and payout ratios for different profit classes**

Profit class	1903-1938				1948-1983				1988-2003			
	N	Free cash flow (modern)	Dividend paying firms	Payout ratio	N	Free cash flow (modern)	Dividend paying firms	Payout ratio	N	Free cash flow (modern)	Dividend paying firms	Payout ratio
Loss	229	-7%	3%	3%	83	-5%	2%	2%	36	-17%	11%	11%
Q1	240	2%	26%	18%	276	6%	59%	35%	91	14%	66%	19%
Q2	252	6%	51%	36%	330	12%	85%	33%	88	24%	88%	19%
Q3	245	9%	74%	47%	346	17%	86%	25%	88	30%	93%	20%
Q4	239	15%	76%	39%	346	24%	88%	23%	83	39%	93%	20%
Q5	253	26%	73%	33%	331	36%	89%	18%	82	60%	88%	18%
Total	1458	9%	51%	30%	1712	18%	78%	25%	468	29%	80%	19%

**Table 3: Standard deviation and distribution of profitability and dividends (continued)**

---

This table contains descriptive statistics for Dutch non-financial firms listed on the stock exchange of Amsterdam during the period 1903-2003, which consists of 20 cross-sections of five-year intervals. Panel A reports the number of observations and the mean and the median of the standard deviation for payout and profitability measures per five-period window (each window is a pooled cross-section). For these five-period windows, we calculate the standard deviations for each firm and present the median of these standard deviations, i.e. to be included in this analysis we require at least two firm-year observations per cross-section. Payout ratio/total equity is defined as (dividends paid to free cash flow) scaled by total equity. Panel B reports for the periods 1903-1938, 1948-1983 and 1988-2003, per profit class the number of observations, the mean of free cash flow (modern), the fraction of firms that pay dividends (compare to dividend payments) and the mean of payout ratio. Profit classes are created based on free cash flow (modern), i.e. 1) the class 'loss' consists of observations which have a free cash flow (modern) less than zero, 2) the remaining observations with free cash flow (modern) of zero and larger are added to the quintiles 'Q1' to 'Q5' according to the size of their free cash flow (modern). In order to account for trends in profitability, we add observations to a profitability group on a yearly basis, which explains why the number of observations is not constant across quintiles. Note that the payout ratio is set to one in case a firm with a loss pays a dividend, which explains that for loss-making firms the fraction of firms that pay dividends equals the payout ratio. Definitions of the variables are provided in Table 1 of the appendix.

---

**Table 4: Descriptive statistics for different time periods**

Variables	1903-1938		1948-1983		1988-2003	
	(N = 1458)		(N = 1712)		(N = 468)	
	mean	median	mean	median	mean	median
Dividend payments	0.511	1.000	0.784	1.000	0.795	1.000
Payout ratio	0.298	0.121	0.252	0.211	0.187	0.179
Return on Equity (modern)	0.049	0.047	0.085	0.082	0.119	0.138
Return on Equity (reported)	0.036	0.037	0.077	0.074	0.119	0.138
Free cash flow (modern)	0.088	0.074	0.182	0.174	0.292	0.282
Losses (reported)	0.203	0.000	0.085	0.000	0.147	0.000
Reserves (scaled by total assets)	0.023	0.018	0.163	0.149	0.136	0.176
Liquidity	0.210	0.157	0.343	0.327	0.377	0.338
Leverage	0.346	0.335	0.451	0.458	0.545	0.547
Net working capital	0.185	0.123	0.243	0.238	0.156	0.157
Tangibility	0.403	0.369	0.284	0.252	0.336	0.332
Firm size (inflation corrected), in millions	110	49	376	80	2298	565
Conservatism (dummy)	0.352	0.000	0.345	0.000	0.000	0.000
Market-to-Book	0.846	0.734	0.938	0.809	2.693	1.568
Asset Growth (past 5 years)	0.065	-0.003	0.633	0.435	0.555	0.361
Asset Growth (next 5 years)	0.078	0.008	0.582	0.414	0.589	0.382
Family firm	0.308	0.000	0.304	0.000	0.090	0.000
Board size	6.915	6.000	7.395	7.000	7.959	8.000
# of interlocks with banks	1.121	1.000	0.998	1.000	0.900	0.000
# of interlocks with firms	8.011	5.000	7.477	5.000	4.885	4.000
Preferred shares	0.046	0.000	0.330	0.000	0.442	0.000

This table contains descriptive statistics for Dutch non-financial firms listed on the stock exchange of Amsterdam during the period 1903-2003, which consists of 20 cross-sections of five-year intervals. For the periods 1903-1938, 1948-1983 and 1988-2003, we report per variable the mean and median. Definitions of the variables are provided in Table 1 of the appendix.

**Table 5: Differences between firms that pay dividends and those that do not pay dividends**

Variables	1903-1938		1948-1983		1988-2003	
	Dividend Payers (N=745)	Non-dividend Payers (N=713)	Dividend Payers (N=1342)	Non-dividend Payers (N=369)	Dividend Payers (N=372)	Non-dividend Payers (N=96)
	mean	mean	mean	mean	mean	mean
Payout ratio	0.583	0.000	0.321	0.000	0.235	0.000
Return on Equity (modern)	0.105	-0.009	0.107	0.006	0.172	-0.087
Return on Equity (reported)	0.113	-0.044	0.102	-0.014	0.172	-0.087
Free cash flow (modern)	0.141	0.032	0.203	0.107	0.335	0.127
Losses (reported)	0.007	0.408	0.005	0.374	0.035	0.583
Reserves (scaled by total assets)	0.057	-0.012	0.190	0.065	0.209	-0.143
Liquidity	0.242	0.177	0.352	0.310	0.377	0.374
Leverage	0.360	0.331	0.451	0.450	0.534	0.589
Net working capital	0.190	0.181	0.251	0.214	0.160	0.143
Tangibility	0.367	0.439	0.282	0.292	0.341	0.316
Firm size (inflation corrected), in millions	131	88	384	345	2592	1156
Conservatism (dummy)	0.334	0.370	0.347	0.339		
Market-to-Book	1.089	0.570	1.001	0.703	2.649	2.860
Asset Growth (past 5 years)	0.174	-0.047	0.706	0.361	0.603	0.338
Asset Growth (next 5 years)	0.131	0.014	0.638	0.333	0.631	0.365
Family firm	0.313	0.303	0.331	0.206	0.102	0.042
Board size	7.230	6.586	7.600	6.631	8.191	7.063
# of interlocks with banks	1.195	1.045	1.025	0.892	1.003	0.500
# of interlocks with firms	8.491	7.509	7.741	6.453	5.347	3.094
Preferred shares	0.043	0.049	0.337	0.306	0.438	0.458

This table contains descriptive statistics for Dutch non-financial firms listed on the stock exchange of Amsterdam during the period 1903-2003, which consists of 20 cross-sections of five-year intervals. For the periods 1903-1938, 1948-1983 and 1988-2003, we report per variable the mean for dividend payers and non-payers. Definitions of the variables are provided in Table 1 of the appendix.

**Table 6: Why do firms pay a dividend?**

<b>Panel A Logit regression on dividend payments</b>			
Variables	(1) 1903-1938	(2) 1948-1983	(3) 1988-2003
Free cash flow (modern)	1.254*** (0.000)	0.390*** (0.000)	0.177 (0.168)
Losses (reported)	-0.523*** (0.000)	-0.438*** (0.000)	-0.230*** (0.000)
Reserves (scaled by total assets)	0.231 (0.105)	0.609*** (0.000)	0.387*** (0.000)
Liquidity	0.329*** (0.001)	0.085 (0.180)	0.177* (0.081)
Firm size (log and inflation corrected)	0.033* (0.054)	0.029*** (0.008)	0.039*** (0.002)
Leverage	-0.011 (0.897)	0.044 (0.420)	-0.270* (0.057)
Net working capital	-0.162** (0.025)	-0.113* (0.072)	-0.212 (0.125)
Tangibility	-0.037 (0.434)	0.015 (0.773)	-0.002 (0.987)
Conservatism (dummy)	-0.026 (0.327)	-0.003 (0.881)	
Board size	0.048 (0.396)	0.021 (0.603)	-0.019 (0.771)
# of interlocks with firms	-0.019 (0.242)	-0.019 (0.124)	0.011 (0.551)
# of interlocks with banks	0.003 (0.922)	0.001 (0.969)	-0.008 (0.820)
Family firm	0.008 (0.780)	0.023 (0.256)	0.200*** (0.000)
Preferred shares	-0.056 (0.354)	0.015 (0.421)	-0.028 (0.274)
Year	Yes	Yes	Yes
Industry	Yes	Yes	Yes
Observations	1,458	1,711	468
Pseudo R-squared	36%	38%	55%
AIC-criterion	1,359.836	1,171.218	259.084

**Table 6: Why do firms pay a dividend? (continued)**

<b>Panel B Logit variance decomposition on dividend payments</b>			
Variables	(1) 1903-1938	(2) 1948-1983	(3) 1988-2003
Free cash flow (modern)	10.78%	5.50%	7.13%
Losses (reported)	12.94%	16.10%	17.23%
Reserves (scaled by total assets)	2.07%	7.00%	13.30%
Liquidity	1.32%	0.22%	0.26%
Firm size (log and inflation corrected)	0.53%	0.75%	3.71%
Leverage	0.32%	0.31%	1.83%
Net working capital	0.37%	0.17%	0.57%
Tangibility	0.21%	0.03%	0.24%
Conservatism (dummy)	0.28%	0.08%	0.00%
Board size	0.47%	0.48%	0.88%
# of interlocks with firms	0.06%	0.11%	1.06%
# of interlocks with banks	0.04%	0.15%	0.36%
Family firm	0.02%	0.54%	1.18%
Preferred shares	0.11%	0.07%	0.25%
Fixed effects	5.98%	5.99%	6.69%

**Table 6: Why do firms pay a dividend? (continued)**

<b>Panel C Logit of combined periods and test for difference in coefficients for different percentiles</b>								
Variables	1948-1983 (difference)	Change [Chi-squared]			1988-2003 (difference)	Change [Chi-squared]		
		p25	p50	p75		p25	p50	p75
Free cash flow (modern)	-0.539*** (0.004)	-1.049*** [9.576]	-1.381*** [19.524]	-1.426*** [29.907]	-0.142 (0.481)	-0.535* [2.763]	-0.384** [4.893]	-0.045 [0.175]
Losses (reported)	-0.117 (0.168)	-0.113 [0.512]	0.213 [2.442]	0.488*** [15.656]	0.112 (0.136)	0.549*** [8.858]	0.404*** [17.261]	0.029 [0.098]
Reserves (scaled by total assets)	0.567*** (0.000)	0.88*** [12.196]	0.454* [3.764]	-0.055 [0.091]	-0.076 (0.663)	-0.676* [2.823]	-0.514*** [10.837]	-0.004 [0.001]
Liquidity	-0.162 (0.145)	-0.309 [2.636]	-0.384** [4.855]	-0.380*** [8.32]	0.133 (0.364)	0.064 [0.067]	0.013 [0.011]	0.065 [0.831]
Firm size (log and inflation corrected)	0.009 (0.621)	0.010 [0.106]	-0.011 [0.156]	-0.030 [1.876]	0.034 (0.112)	0.008 [0.036]	-0.003 [0.016]	0.017 [1.034]
Leverage	0.063 (0.494)	0.103 [0.427]	0.074 [0.277]	0.030 [0.083]	-0.494** (0.017)	-0.586** [6.239]	-0.326** [5.375]	-0.224 [1.637]
Net working capital	-0.008 (0.937)	0.011 [0.005]	0.096 [0.5]	0.160 [2.61]	-0.264 (0.197)	-0.182 [0.671]	-0.070 [0.209]	-0.127 [0.64]
Tangibility	0.049 (0.494)	0.084 [0.494]	0.076 [0.652]	0.053 [0.697]	-0.140 (0.372)	-0.168 [0.9]	-0.094 [0.627]	-0.063 [0.486]
Conservatism (dummy)	0.017 (0.604)	0.031 [0.309]	0.035 [0.516]	0.031 [0.761]				
Board size	-0.013 (0.840)	-0.028 [0.064]	-0.045 [0.214]	-0.053 [0.517]	-0.049 (0.603)	-0.074 [0.339]	-0.045 [0.355]	-0.021 [0.247]
# of interlocks with firms	-0.008 (0.674)	-0.010 [0.1]	0.004 [0.023]	0.017 [0.638]	0.032 (0.265)	0.054 [1.77]	0.034 [2.233]	0.014 [1.255]
# of interlocks with banks	-0.001 (0.965)	-0.003 [0.002]	-0.003 [0.005]	-0.003 [0.008]	-0.033 (0.513)	-0.037 [0.309]	-0.02 [0.359]	-0.015 [0.519]
Family firm	0.022 (0.525)	0.034 [0.336]	0.018 [0.118]	-0.002 [0.002]	0.236*** (0.001)	0.238* [2.717]	0.122* [2.778]	0.109 [1.801]
Preferred shares	0.065 (0.225)	0.112 [1.409]	0.105 [1.263]	0.077 [1.001]	-0.054 (0.185)	-0.074 [1.89]	-0.043 [1.926]	-0.024 [1.128]
Observations	3,169				2,178			
Year	Yes				Yes			
Industry	Yes				Yes			
Pseudo R-squared	0.405				0.409			

This table presents the results of the logit regressions for the periods 1903-1938, 1948-1983 and 1988-2003 for Dutch non-financial firms listed on the stock exchange of Amsterdam during the period 1903-2003, which consists of 20 cross-sections of five-year intervals. The explained variable is dividend payments. In Panel A, we report per variable the regression coefficient and the *p*-value and per model the number of observations, the pseudo R-squared and the AIC-information criterion. Panel B contains the results of the Shapely variance decomposition based on the logit regressions in Panel A, i.e. it shows the contribution of each variable and the sum of the fixed effects to the overall explanatory power of the model. Definitions of the variables are provided in the Appendix. In order to avoid biased standard errors, we estimate our models by applying a logit regression method with firm clustered standard errors, including industry and year dummies. The intercept is included in the model but not reported in the table. P-statistics are included in parentheses. Estimated coefficients marked with \*\*\*, \*\* or \* are significant at the 1%, 5% or 10% level, respectively (two-sided). Panel C, shows combined period logit regressions, and depicts the interaction effects between period dummies and the variables of interest. We combine 1903-1938 with 1948-1983 and we combine 1948-1983 with 1988-2003. We subsequently interact our variables of interest with regime dummies (i.e. a variable equal to 1 if an observation is from the period 1948-1983 or 1988-2003). We subsequently test the difference between coefficients from the different regimes. We present average marginal effects and test the difference of these marginal effects at the 25th, 50th and 75th percentile of each variable. For the calculation of the appropriate marginal effects we use the delta method, for the test of difference in coefficients we report the Chi-squared test statistic. For the OLS-regressions the test for difference in coefficients follows a Chi-distribution, we report these test statistics in squared brackets.





**Table 7: How much dividend do firms pay?**

Panel A OLS-regression on payout ratio					
Variables	(1)	(2)	(3)	Test for difference	
	1903-1938	1948-1983	1988-2003	(2)-(1)	(3)-(2)
Free-cash flow (modern)	-1.180*** (0.000)	-1.063*** (0.000)	-0.022 (0.718)	0.117 (0.393)	1.041*** (0.000)
Reserves (scaled by total assets)	-0.175 (0.144)	-0.296*** (0.000)	0.122** (0.023)	-0.121 (0.353)	0.419*** (0.000)
Liquidity	0.344*** (0.000)	0.082** (0.045)	0.143** (0.027)	-0.262*** (0.007)	0.061 (0.441)
Firm size (log and inflation corrected)	0.030** (0.042)	-0.014** (0.017)	-0.005 (0.548)	-0.044*** (0.005)	0.009 (0.347)
Leverage	-0.204*** (0.003)	-0.263*** (0.000)	-0.113 (0.234)	-0.059 (0.480)	0.150 (0.169)
Net working capital	-0.374*** (0.000)	-0.317*** (0.000)	-0.058 (0.513)	0.057 (0.480)	0.259** (0.011)
Tangibility	-0.230*** (0.000)	-0.290*** (0.000)	-0.182** (0.014)	-0.059 (0.296)	0.108 (0.206)
Conservatism (dummy)	0.003 (0.890)	0.021* (0.050)		0.018 (0.410)	
Board size	-0.034 (0.422)	0.047** (0.025)	0.030 (0.416)	0.081* (0.081)	-0.017 (0.687)
# of interlocks with firms	-0.016 (0.263)	-0.019*** (0.006)	0.003 (0.793)	-0.003 (0.825)	0.022* (0.066)
# of interlocks with banks	0.008 (0.750)	0.002 (0.878)	-0.003 (0.872)	-0.006 (0.822)	-0.004 (0.825)
Family firm (weak)	-0.019 (0.386)	-0.008 (0.410)	-0.000 (0.997)	0.011 (0.644)	0.008 (0.673)
Preference shares	0.009 (0.833)	0.000 (0.978)	0.007 (0.608)	-0.008 (0.839)	0.007 (0.686)
Year	Yes	Yes	Yes		
Industry	Yes	Yes	Yes		
Observations	737	1,336	368		
R-squared	32%	50%	27%		
Adjusted R-squared	29%	50%	22%		
AIC-criterion	-128.84	-1,251.37	-537.81		

**Table 7: How much dividend do firms pay? (continued)**

<b>Panel B OLS variance decomposition on payout ratio</b>			
	(1)	(2)	(3)
	1903-1938	1948-1983	1988-2003
Free cash flow (modern)	15.39%	27.41%	0.16%
Reserves (scaled by total assets)	0.09%	2.09%	2.25%
Liquidity	1.00%	0.37%	4.06%
Firm size (log and inflation corrected)	0.46%	4.01%	0.10%
Leverage	0.71%	3.72%	1.16%
Net working capital	1.78%	1.92%	1.72%
Tangibility	5.26%	4.36%	8.29%
Conservatism (dummy)	0.15%	0.38%	0.00%
Board size	0.06%	0.54%	0.08%
# of interlocks with firms	0.06%	0.38%	0.17%
# of interlocks with banks	0.03%	0.27%	0.14%
Family firm	0.21%	0.10%	0.01%
Preferred shares	0.01%	0.47%	0.07%
Fixed effects	6.69%	4.39%	8.37%

This table presents the results of the OLS regressions for the periods 1903-1938, 1948-1983 and 1988-2003 for Dutch non-financial firms listed on the stock exchange of Amsterdam during the period 1903-2003, which consists of 20 cross-sections of five-year intervals. The explained variable is payout ratio. Where both dividends paid profits should be larger than zero. In Panel A, we report per variable the regression coefficient and the  $p$ -value and per model the number of observations, the R-squared, the adjusted R-squared and the AIC-information criterion. The last two columns high light the statistical difference between the period, based on regressions using interaction effects. Panel B contains the results of the Shapely variance decomposition based on the OLS regressions in Panel A, i.e. it shows the contribution of each variable and the sum of the fixed effects to the overall explanatory power of the model. Definitions of the variables are provided in the Appendix. In order to avoid biased standard errors, we estimate our models by applying an OLS regression method with firm clustered standard errors, including industry and year dummies. The intercept is included in the model but not reported in the table. P-statistics are included in parentheses. Estimated coefficients marked with \*\*\*, \*\* or \* are significant at the 1%, 5% or 10% level, respectively (two-sided).

**Table 8: Market price consequences of dividends**

<b>Panel A The relation between dividend payments and market to book</b>					
	<b>Full sample</b>				
Variables	(1)	(2)	(3)	Test for difference	
	1903-1938	1948-1983	1988-2003	(2)-(1)	(3)-(2)
Propensity to pay	0.254*** (0.000)	0.087* (0.088)	-0.428 (0.534)	-0.167** (0.018)	-0.515 (0.454)
Losses (reported)	-0.119** (0.016)	-0.104 (0.196)	-0.829 (0.119)	0.015 (0.870)	-0.725 (0.168)
Liquidity	0.048 (0.763)	0.104 (0.495)	-0.779 (0.536)	0.056 (0.789)	-0.883 (0.472)
Firm size (inflation corrected), in milions	0.103*** (0.000)	0.005 (0.793)	0.102 (0.372)	-0.098*** (0.001)	0.097 (0.371)
Leverage	-0.009 (0.938)	0.128 (0.342)	0.809 (0.357)	0.137 (0.429)	0.681 (0.435)
Tangibility	-0.306*** (0.001)	0.218 (0.129)	-2.413* (0.056)	0.524*** (0.001)	-2.632** (0.034)
Conservatism (dummy)	-0.047 (0.287)	0.053 (0.142)		0.100* (0.066)	
Years	Yes	Yes	Yes		
Industry	Yes	Yes	Yes		
Observations	914	1,032	329		
R-squared	40%	26%	17%		
Adjusted R-squared	39%	25%	13%		

**Table 8: Market price consequences of dividends (continued)**

<b>Panel B The relation between payout ratio and market to book (at t+5)</b>					
Variables	Dividend payers			Test for difference	
	(1) 1903-1938	(2) 1948-1983	(3) 1988-2008	(2)-(1)	(3)-(2)
Payout ratio	0.384*** (0.007)	0.236* (0.076)	0.152 (0.877)	-0.148 (0.398)	-0.085 (0.929)
Losses (reported)	-0.625*** (0.003)	-0.725*** (0.000)	-0.518 (0.132)	-0.100 (0.684)	0.207 (0.572)
Liquidity	-0.113 (0.606)	0.149 (0.329)	-0.866 (0.563)	0.262 (0.315)	-1.015 (0.491)
Firm size (log and inflation corrected)	0.125*** (0.000)	0.021 (0.371)	0.130 (0.294)	-0.104** (0.011)	0.110 (0.348)
Leverage	0.172 (0.377)	0.214 (0.141)	1.452 (0.166)	0.042 (0.853)	1.238 (0.233)
Tangibility	-0.249* (0.054)	0.337** (0.033)	-2.349 (0.136)	0.586*** (0.002)	-2.686* (0.083)
Conservatism (dummy)	-0.103 (0.128)	0.061 (0.132)		0.165** (0.030)	
Year	Yes	Yes	Yes		
Industry	Yes	Yes	Yes		
Observations	501	850	273		
R-squared	42%	30%	17%		
Adjusted R-squared	39%	28%	12%		

This table presents the results of the OLS regressions and a long-term event study for the periods 1903-1938, 1948-1983 and 1988-2003 for Dutch non-financial firms listed on the stock exchange of Amsterdam during the period 1903-2003, which consists of 20 cross-sections of five-year intervals. The explained variables are market-to-book or changes in market-to-book. We summarise the OLS regression results for market-to-book, i.e. we report per variable the regression coefficient and the  $p$ -value, and per model the number of observations, the R-squared, the adjusted R-squared. Definitions of the variables are provided in the Appendix. The dependent variable is the five-year lead of the firm's market-to-book ratio. In order to avoid biased standard errors, we estimate our models by applying an OLS regression method with firm clustered standard errors, including industry and year dummies. The intercept is included in the model but not reported in the table. P-statistics are included in parentheses. Estimated coefficients marked with \*\*\*, \*\* or \* are significant at the 1%, 5% or 10% level, respectively (two-sided). Panel A highlights the effect for the decision to pay dividends and Panel B shows the effect for dividend payers and their choice in payout ratio.