

Rapid defaunation & deforestation of a globally important Neotropical cloud forest

Hannah Hoskins^{1,2}, Oliver Burdekin³, Niall McCann⁴, Merlin Jocque⁵ & Neil Reid^{1,2}

¹Institute of Global Food Security, Queen's University Belfast, ²Operation Wallacea Ltd., ³BurdGIS, ⁴National Park Rescue, ⁵Royal Belgian Institute of Natural Sciences



@hhoskins1
hhoskins01@qub.ac.uk



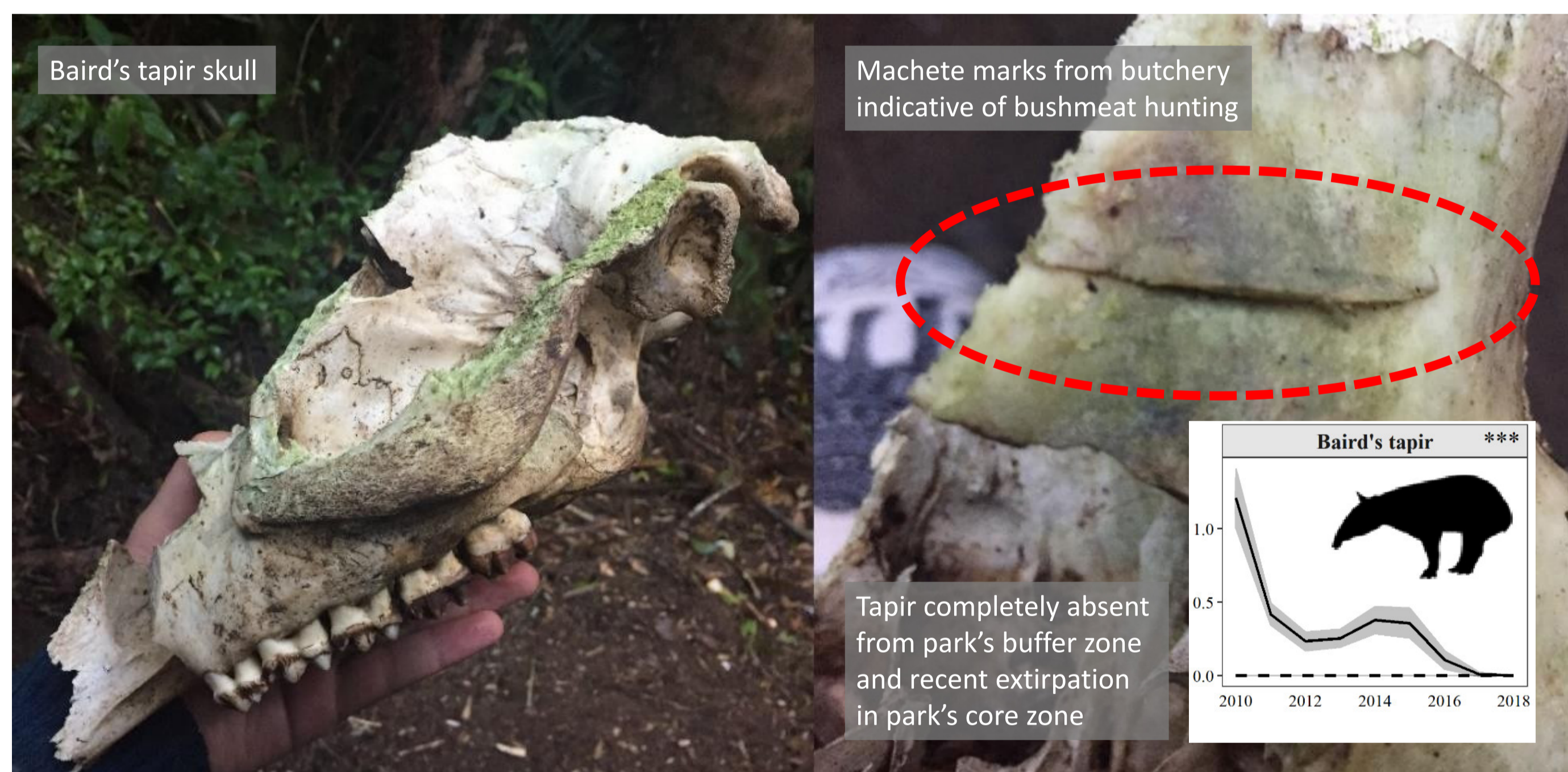
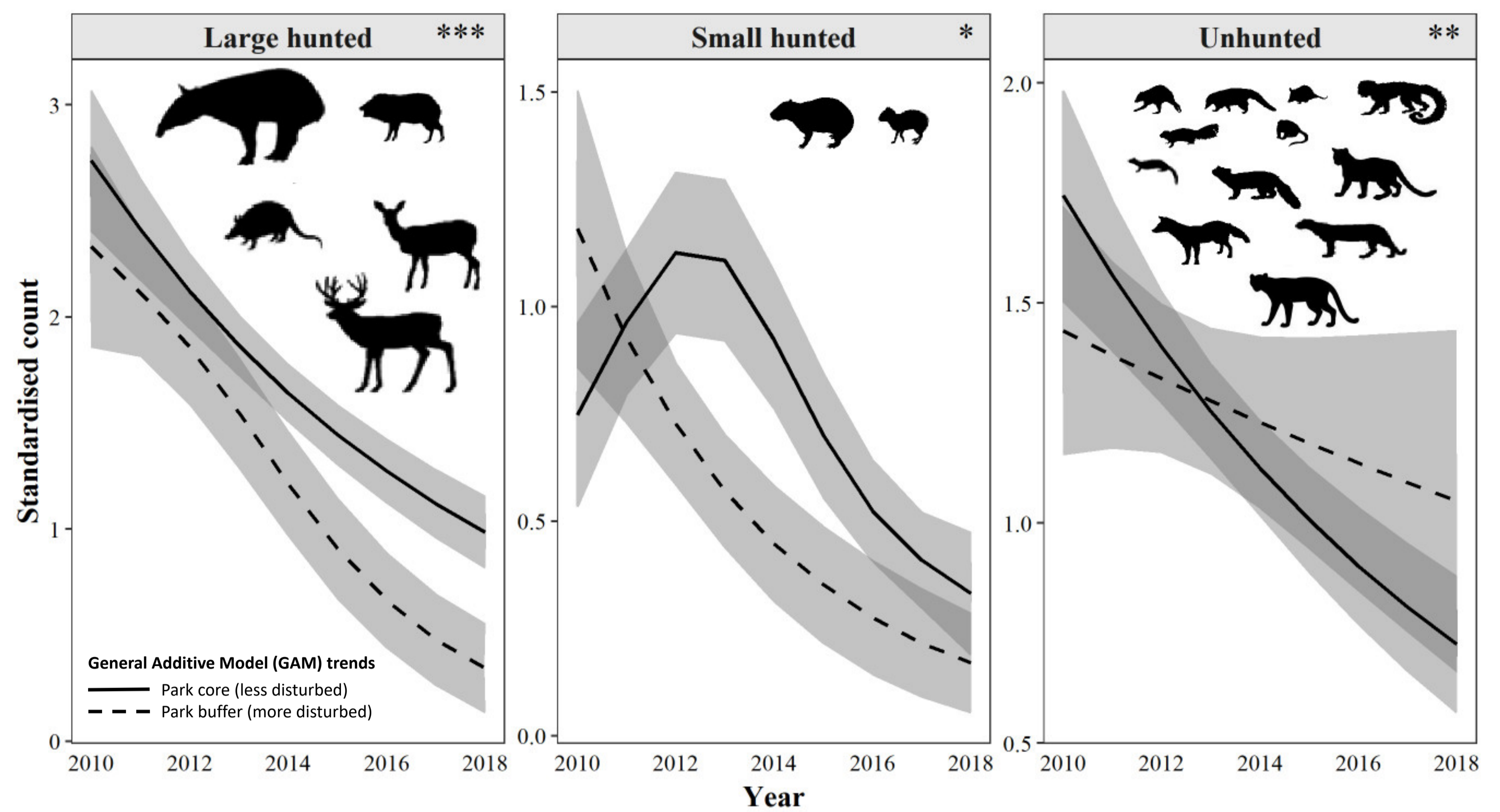
@NeilReid81
neil.reid@qub.ac.uk



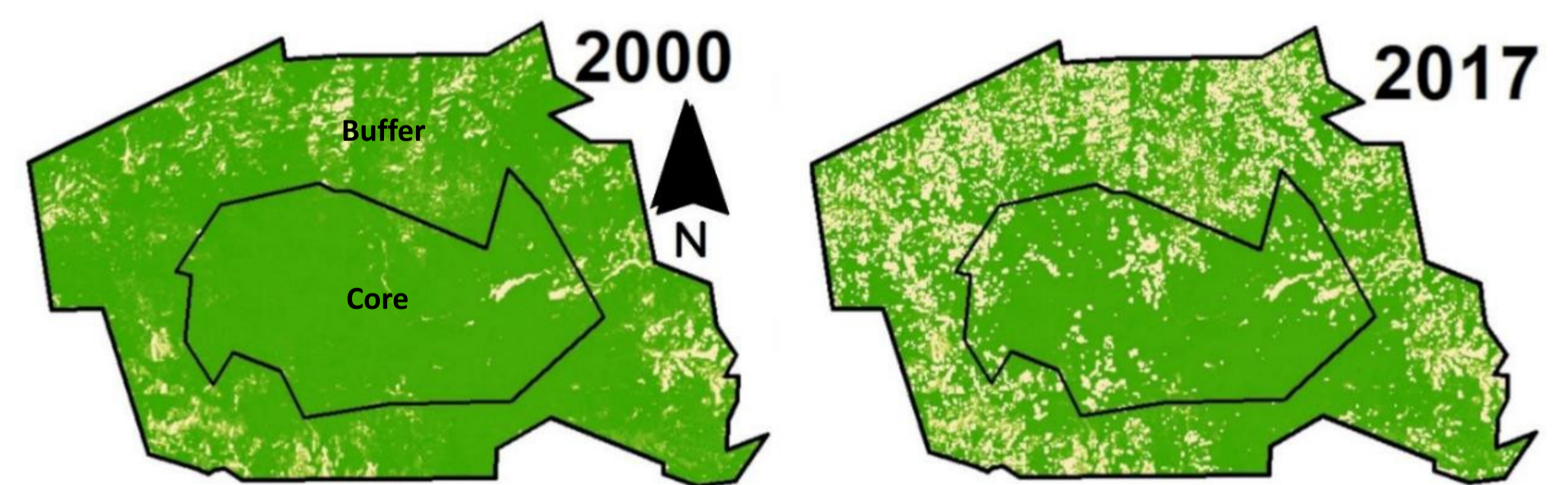
1. Cusuco National Park, northwest Honduras, is ranked 123rd most irreplaceable site for biodiversity out of >173,000 protected areas globally (Le Saout *et al.* 2013)

2. Terrestrial mammal tracks and signs (all species aggregated) declined by -63% since 2006 (ca. -7%/yr) regardless of body size or status as a target for bushmeat

3. Complete defaunation predicted by mid-2020s



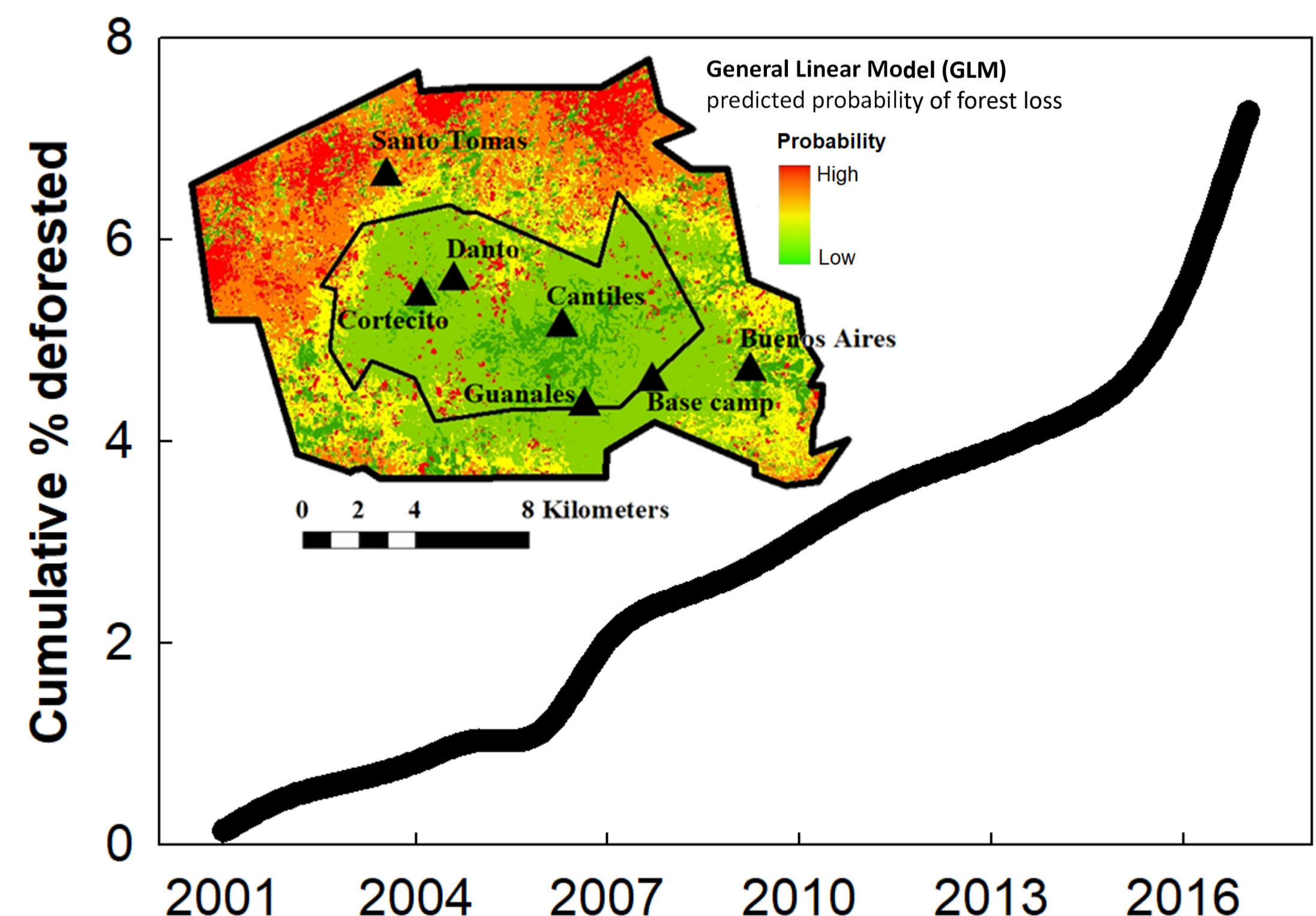
4. Cusuco was once a stronghold for Endangered Baird's tapir (*Tapirus bairdii*), now nearing complete extirpation partly due to illegal hunting



Forest cover = green. *Data source: Global Forest Watch (www.globalforestwatch.org) supported by University of Maryland (<https://earthenginepartners.appspot.com/science-2013-global-forest>) published as Hansen *et al.* (2013)

5. Near linear increased in area deforested with >7% of forest lost since 2000, mostly in northwest

6. Recent acceleration in annual deforestation during 2016/17



References
 • Hansen *et al.* (2013) High-resolution global maps of 21st-century forest cover change. *Science* 342: 850-853.
 • Le Saout *et al.* (2013) Protected areas and effective biodiversity conservation. *Science* 342: 803-805.



QUEEN'S UNIVERSITY BELFAST

IGFS

THE INSTITUTE FOR GLOBAL FOOD SECURITY

Funders:

