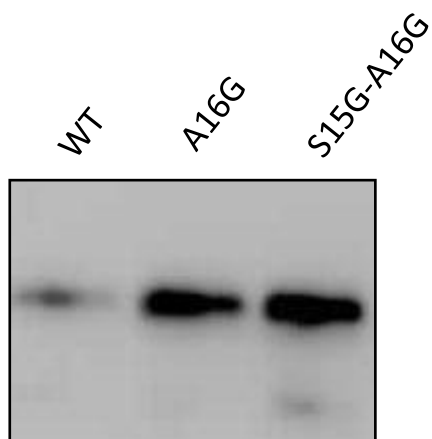
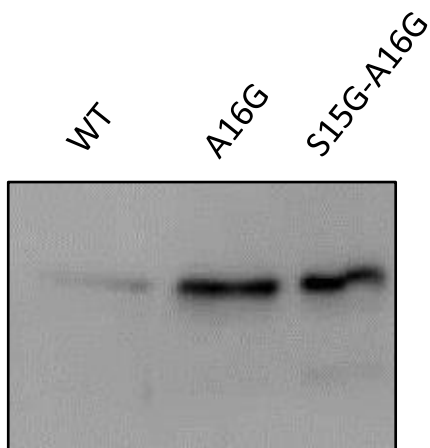


Figure 5

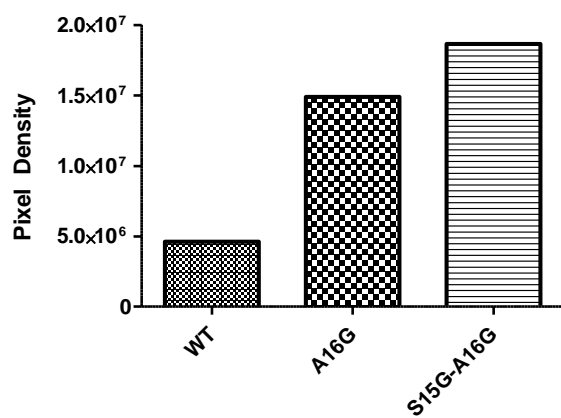
A



B

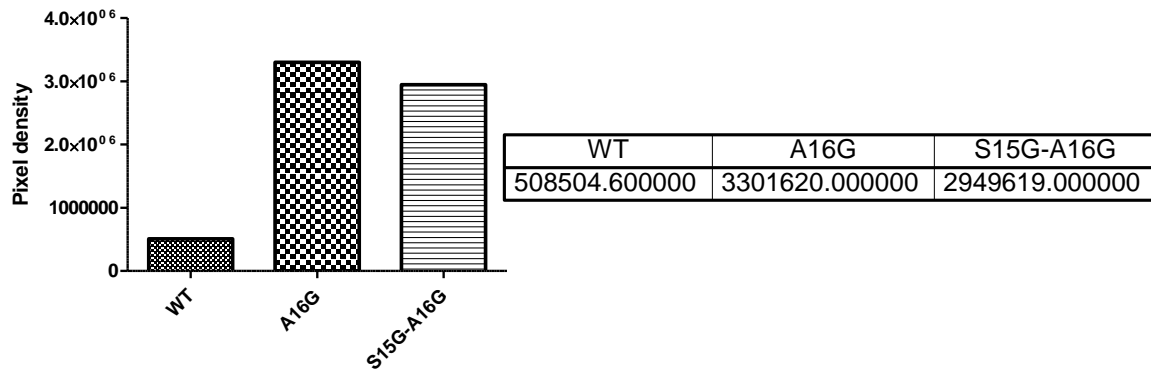


C



| WT | A16G | S15G-A16G |
|---------|--------|-----------|
| 4631250 | 1e+007 | 2e+007 |

D



Western blot analysis of recombinant SLPI incubated with CF sputum and NE

Each purified SLPI protein (100 ng) was incubated with 10 μ l of pooled *Pseudomonas*-positive CF sputum or 2,500 ng of NE in Tris-buffered saline (total volume of 20 μ l) for 8 h at 37°C as previously described 10. Samples were separated by denaturing SDS-PAGE using 15% polyacrylamide gels and blotted onto nitrocellulose membrane. Membranes were probed using biotinylated anti-SLPI antibody as described above, visualised and individual SLPI bands were analysed by densitometry using the Syngene G:Box and GeneSnap software.